



SAW Components

Preliminary Data B9019

Data Sheet

A large, stylized EPCOS logo is superimposed over a grayscale image of a globe. The logo is rendered in a light, glowing white color, making it stand out against the darker background of the globe. The globe shows continents and oceans in a soft, ethereal style.



SAW Components

B9019

Low-Loss Filter for Mobile Communication

1842,5 MHz

Preliminary Data



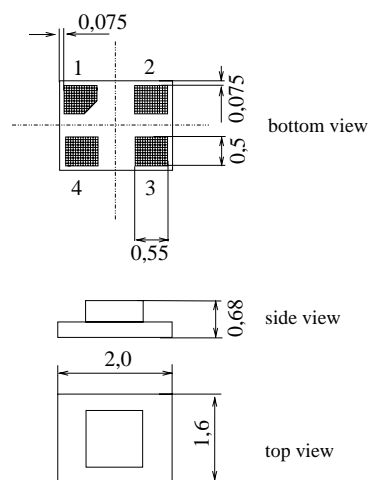
Chip sized SAW package DCS4F

Features

- Low-loss RF filter for mobile telephone PCN systems, receive path
- High selectivity up to 6 GHz
- Low amplitude ripple
- Usable passband 75 MHz
- Suitable for GPRS class 1 to 12
- Package for **S**urface **M**ount **T**echnology (**SMT**)

Terminals

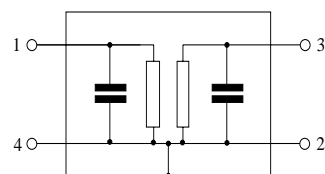
- Ni, gold-plated



Dimensions in mm, approx. weight 0,006 g

Pin configuration

1	Input
3	Output
2,4	Ground



Type	Ordering code	Marking and Package according to	Packing according to
B9019	B39182-B9019-E610	C61157-A7-A113	F61074-V8152-Z000

Electrostatic Sensitive Device (ESD)

Maximum ratings

Operating temperature range	T	- 30/+ 85	°C	
Storage temperature range	T_{stg}	- 40/+ 85	°C	
DC voltage	V_{DC}	3	V	
ESD voltage	V_{ESD}^*	50*	V	Machine Model, 10 pulses
Input Power at				
GSM850, GSM900	P_{IN}	15	dBm	peak power of GSM signal,
GSM1800, GSM1900	P_{IN}	12	dBm	duty cycle 4:8
Tx bands				

- acc. to JESD22-A115A (Machine Model), 10 negative & 10 positive pulses



SAW Components

B9019

Low-Loss Filter for Mobile Communication

1842,5 MHz

Preliminary Data



Characteristics

Operating Temperature Range:	$T = +25 \pm 2 \text{ }^{\circ}\text{C}$
Terminating source impedance:	$Z_S = 50\Omega$ (unbalanced) + 2,2 nH
Terminating load impedance:	$Z_L = 50\Omega$ (unbalanced)

		min.	typ.	max.	
Center frequency	f_C	—	1842,5	—	MHz
Maximum insertion attenuation	α_{\max}				
1805,0 ... 1880,0 MHz		—	1,9	2,5	dB
Amplitude ripple (p-p)	$\Delta\alpha$				
1805,0 ... 1880,0 MHz		—	0,6	1,2	dB
Input VSWR					
1805,0 ... 1880,0 MHz		—	1,8	2,0	
Output VSWR					
1805,0 ... 1880,0 MHz		—	2,1	2,3	
Attenuation	α				
0,0 ... 1480,0 MHz		30	33	—	dB
1480,0 ... 1705,0 MHz		28	32	—	dB
1705,0 ... 1785,0 MHz		12	14	—	dB
1920,0 ... 1980,0 MHz		18	24	—	dB
1980,0 ... 2160,0 MHz		25	27	—	dB
2160,0 ... 2400,0 MHz		29	34	—	dB
2400,0 ... 2500,0 MHz		30	33	—	dB
2500,0 ... 3610,0 MHz		25	29	—	dB
3610,0 ... 3760,0 MHz		30	38	—	dB
3760,0 ... 6000,0 MHz		30	38	—	dB



SAW Components	B9019
Low-Loss Filter for Mobile Communication	1842,5 MHz

Preliminary Data



Characteristics

Operating Temperature Range:	$T = -10$ to $+80^{\circ}\text{C}$
Terminating source impedance:	$Z_S = 50\Omega$ (unbalanced) + 2,2 nH
Terminating load impedance:	$Z_L = 50\Omega$ (unbalanced)

		min.	typ.	max.	
Center frequency	f_C	—	1842,5	—	MHz
Maximum insertion attenuation	α_{\max}				
1805,0 ... 1880,0 MHz		—	2,2	2,8	dB
Amplitude ripple (p-p)	$\Delta\alpha$				
1805,0 ... 1880,0 MHz		—	1,0	1,7	dB
Input VSWR					
1805,0 ... 1880,0 MHz		—	1,8	2,0	
Output VSWR					
1805,0 ... 1880,0 MHz		—	2,1	2,3	
Attenuation	α				
0,0 ... 1480,0 MHz		30	33	—	dB
1480,0 ... 1705,0 MHz		28	32	—	dB
1705,0 ... 1785,0 MHz		11	13	—	dB
1920,0 ... 1980,0 MHz		18	24	—	dB
1980,0 ... 2160,0 MHz		24	26	—	dB
2160,0 ... 2400,0 MHz		29	34	—	dB
2400,0 ... 2500,0 MHz		30	33	—	dB
2500,0 ... 3610,0 MHz		25	29	—	dB
3610,0 ... 3760,0 MHz		30	38	—	dB
3760,0 ... 6000,0 MHz		30	38	—	dB



SAW Components

B9019

Low-Loss Filter for Mobile Communication

1842,5 MHz

Preliminary Data



Characteristics

Operating Temperature Range:	$T = -20$ to $+75^{\circ}\text{C}$
Terminating source impedance:	$Z_S = 50\Omega$ (unbalanced) + 2,2 nH
Terminating load impedance:	$Z_L = 50\Omega$ (unbalanced)

		min.	typ.	max.	
Center frequency	f_C	—	1842,5	—	MHz
Maximum insertion attenuation	α_{\max}				
1805,0 ... 1880,0 MHz		—	2,3	2,9	dB
Amplitude ripple (p-p)	$\Delta\alpha$				
1805,0 ... 1880,0 MHz		—	1,1	1,8	dB
Input VSWR					
1805,0 ... 1880,0 MHz		—	1,8	2,1	
Output VSWR					
1805,0 ... 1880,0 MHz		—	2,1	2,3	
Attenuation	α				
0,0 ... 1480,0 MHz		30	33	—	dB
1480,0 ... 1705,0 MHz		28	32	—	dB
1705,0 ... 1785,0 MHz		11	13	—	dB
1920,0 ... 1980,0 MHz		18	24	—	dB
1980,0 ... 2160,0 MHz		24	26	—	dB
2160,0 ... 2400,0 MHz		29	34	—	dB
2400,0 ... 2500,0 MHz		30	33	—	dB
2500,0 ... 3610,0 MHz		25	29	—	dB
3610,0 ... 3760,0 MHz		30	38	—	dB
3760,0 ... 6000,0 MHz		30	38	—	dB



SAW Components	B9019
Low-Loss Filter for Mobile Communication	1842,5 MHz

Preliminary Data



Characteristics

Operating Temperature Range:	$T = -30$ to $+85^{\circ}\text{C}$
Terminating source impedance:	$Z_S = 50\Omega$ (unbalanced) + 2,2 nH
Terminating load impedance:	$Z_L = 50\Omega$ (unbalanced)

		min.	typ.	max.	
Center frequency	f_C	—	1842,5	—	MHz
Maximum insertion attenuation	α_{\max}				
1805,0 ... 1880,0 MHz		—	2,5	3,2	dB
Amplitude ripple (p-p)	$\Delta\alpha$				
1805,0 ... 1880,0 MHz		—	1,3	2,1	dB
Input VSWR					
1805,0 ... 1880,0 MHz		—	2,1	2,4	
Output VSWR					
1805,0 ... 1880,0 MHz		—	2,1	2,5	
Attenuation	α				
0,0 ... 1480,0 MHz		30	33	—	dB
1480,0 ... 1705,0 MHz		28	32	—	dB
1705,0 ... 1785,0 MHz		10	13	—	dB
1920,0 ... 1980,0 MHz		18	24	—	dB
1980,0 ... 2160,0 MHz		24	26	—	dB
2160,0 ... 2400,0 MHz		29	34	—	dB
2400,0 ... 2500,0 MHz		30	33	—	dB
2500,0 ... 3610,0 MHz		25	29	—	dB
3610,0 ... 3760,0 MHz		30	38	—	dB
3760,0 ... 6000,0 MHz		30	38	—	dB



SAW Components

B9019

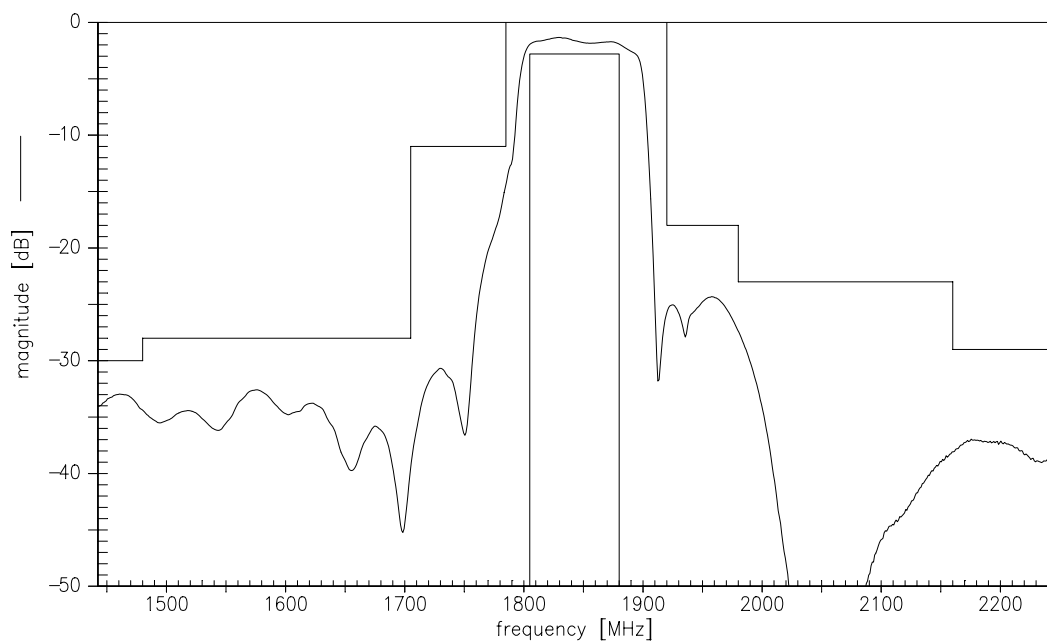
Low-Loss Filter for Mobile Communication

1842,5 MHz

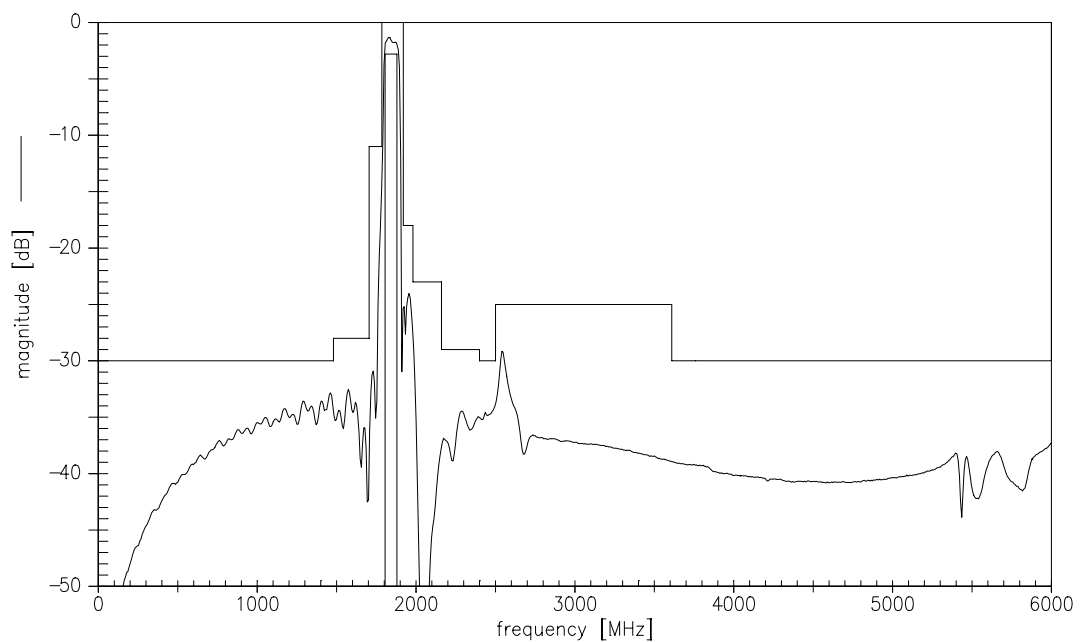
Preliminary Data



Transfer function (spec for 25°C)



Transfer function (wideband)





SAW Components	B9019
Low-Loss Filter for Mobile Communication	1842,5 MHz
Preliminary Data	SMD

Published by EPCOS AG

Surface Acoustic Wave Components Division, SAW MC WT

P.O. Box 80 17 09, 81617 Munich, GERMANY

© EPCOS AG 2003. Reproduction, publication and dissemination of this brochure and the information contained therein without EPCOS' prior express consent is prohibited.

Purchase orders are subject to the General Conditions for the Supply of Products and Services of the Electrical and Electronics Industry recommended by the ZVEI (German Electrical and Electronic Manufacturers' Association), unless otherwise agreed.

This brochure replaces the previous edition.

For questions on technology, prices and delivery please contact the Sales Offices of EPCOS AG or the international Representatives.

Due to technical requirements components may contain dangerous substances. For information on the type in question please also contact one of our Sales Offices.



中发网 WWW.ZFA.CN

全球最大的PDF中文下载站



中发网
www.zfa.cn

PDF 资料下载尽在中发网