

200V, 300V and 500V

T-33-35

Power Darlington Modules



Device type	VCBO volts	VCEO volts	VCEO (sus) volts	IC cont. amps	PC watts (per xstr)	hFE min	IC amps	VCE volts	Switching Time (max.) ton ts tf μsec. μsec. μsec.			Package
-------------	------------	------------	------------------	---------------	---------------------	---------	---------	-----------	---	--	--	---------

Single Darlington Modules (Isolated)

ETG81-050	600	600	450	30	200	100	30	5	3	12	3	M102
ETK81-050	600	600	450	50	300	100	50	5	3	12	4	M102
ETK85-050	600	600	450	75	350	70	75	5	2	10	2.5	M102
ETL81-050	600	600	500	100	600	100	100	5	3	10	3	M103
ETN81-055	600	600	550	200	1000	70	200	5	2	12	3	M104
1DI240A-055	600	600	550	240	1000	70	240	5	2	12	3	M104
ETN85-050	600	600	450	300	1200	70	300	5	2	12	2.5	M104
1DI480A-055	600	600	550	480	2000	70	480	5	2	12	3	M105

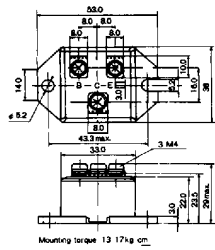
Dual Darlington Modules (Isolated)

EVG31-050	600	600	450	30	200	100	30	5	3	12	4	M201
2DI30D-050	600	600	450	30	250	100	30	5	3	12	4	M208
EVK31-050	600	600	450	50	300	100	50	5	3	12	4	M201
2DI50D-050	600	600	450	50	310	100	50	5	3	12	4	M208
2DI50D-055A	600	600	550	50	300	70	50	5	2	12	4	M208
EVK71-050	600	600	450	75	350	70	75	5	2	10	2.5	M202
2DI75S-050A	600	600	450	75	350	100	75	5	2	10	2.5	M202
EVK75-050	600	600	450	75	350	70	75	5	2	10	2.5	M201
2DI75D-050	600	600	450	75	350	100	75	5	3	12	4	M208
2DI75D-055A	600	600	550	75	350	70	75	5	3	12	4	M208
EVK71-055	600	600	550	75	350	70	75	5	2	12	3	M202
EVL31-050	600	600	450	100	500	100	100	5	3	12	4	M203
2DI100D-050	600	600	450	100	620	100	100	5	3	12	4	M205
EVL31-055	600	600	550	100	500	70	100	5	2	12	3	M203
EVL32-055	600	600	550	120	500	70	120	5	2	12	3	M203
EVM31-050A	600	600	500	150	600	70	150	5	2	10	2.5	M203
2DI150D-050	600	600	450	150	690	100	150	5	3	12	4	M205
2DI200A-020	300	300	250	200	500	100	200	5	2	12	3	M203
2DI200A-050	600	600	450	200	900	80	200	5	2	12	3	M207
2DI240A-055	600	600	550	240	1000	70	240	5	2	12	3	M207
2DI300A-050	600	600	450	300	1200	70	300	5	2	12	2.5	M207

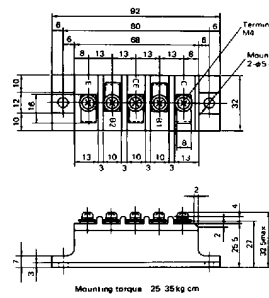
Single Darlington Transistors and Transistors (Non-Isolated)

ET188	400	400	300	100	600	200	100	5	2	12	3	BBT II
ET127-450V	600	600	450	100	960	100	100	5	4	10	3	BBT
ET127-520V	600	600	520	100	960	100	100	5	4	10	3	BBT
ID500A-030	400	400	300	500	2500	500	500	2	2	12	4	BBT IV
ID200A-020	300	300	200	200	800	100	200	5	2	12	3	BBT II
ETN01-055	600	600	550	200	1500	8	120	5	2	8	2	BBT III
ETN31-055	600	600	550	200	1500	70	200	5	2	12	3	BBT III
ETM36-030	400	400	320	200	1000	150	200	5	2	10	1.2	BBT III
ETN35-030	400	400	300	300	1500	100	300	5	2	12	1.2	BBT III
ETN36-030	400	400	320	300	1500	150	300	5	2	10	1.2	BBT III
ETI257	1000	1000	1000	200	1500	4	120	5	—	—	—	BBT III

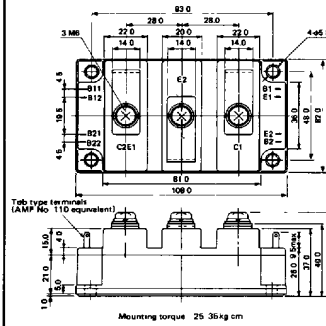
• **M102**



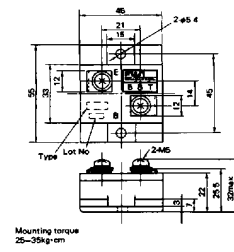
- **M201**



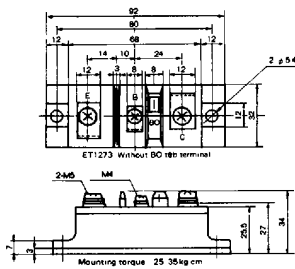
• **M207**



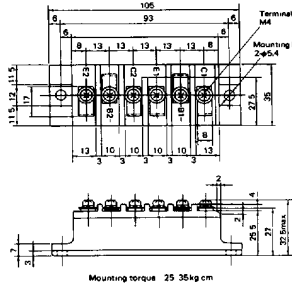
- **BBT II**



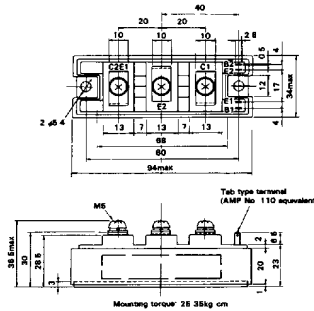
• **M103**



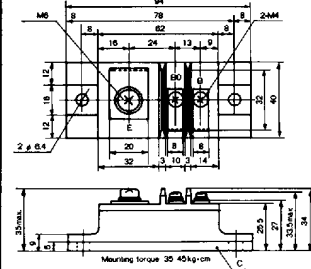
- **M202**



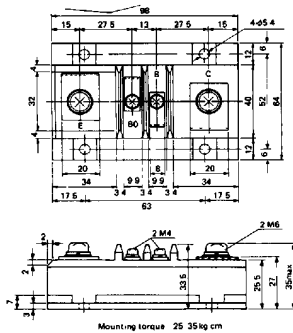
• **M208**



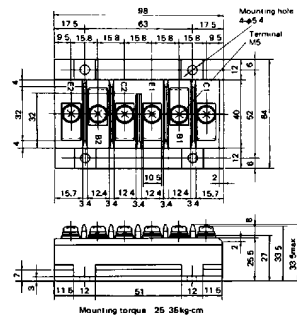
- **BBT III**



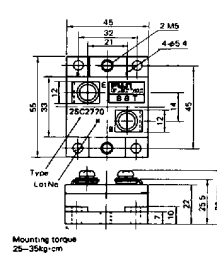
• **M104**



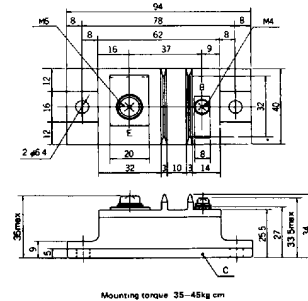
• **M203**



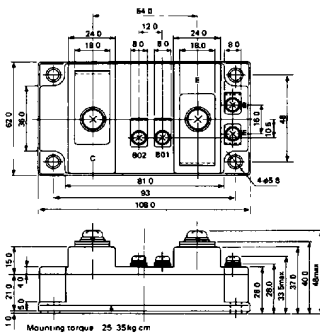
- **BBT**



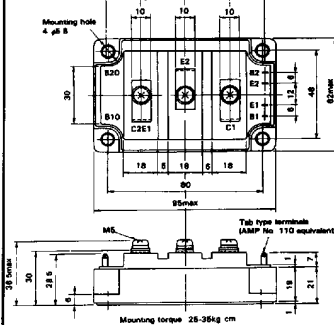
- **BBT III**



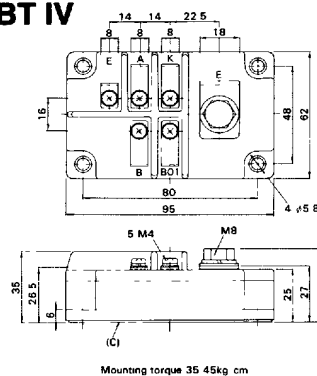
• **M105**



- **M205**



- **BBT IV**



FUJII Semiconductors • Imported and Distributed by:

Collmer Semiconductor, Inc.
14368 PROTON • DALLAS, TEXAS 75244 • 214/233-1589
FAX 214/223-0481

