

Bimetal Cutouts, Temperature Regulators Temperature Limiters R22 R32 R40



DESCRIPTION

Types R22/R40 are **bimetal detectors** and **temperature regulators**.

Types R32 are **temperature limiters** (manual reset) without trip free mechanism.

The thermal response works via a bimetal snap element electrically connected to the switch contact.

The switch system is current insensitive.

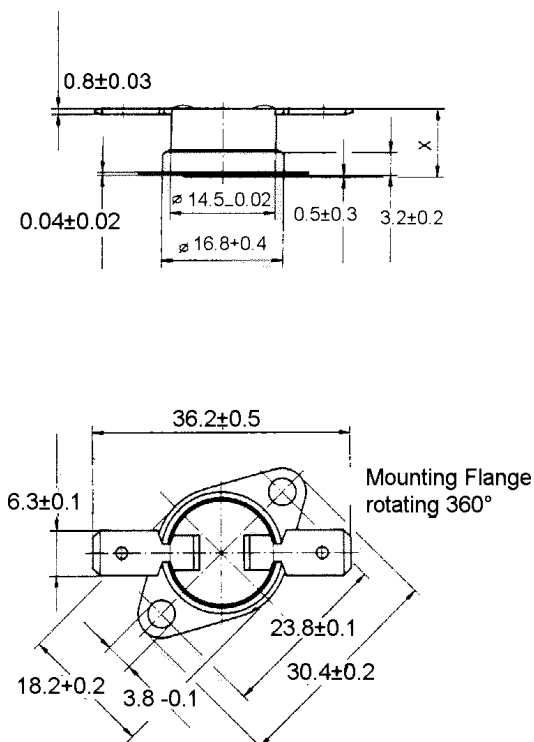
The thermal switches react only to external thermal effects. Double contacts ensure high switch performance and long service life.

The housing, base and the mounting brackets are voltage-free (Standard version: base and mounting brackets are aluminium-plated steel).

Heat transfer occurs directly through the metallic base via connection, radiation and conduction in gaseous and solid media.

DIMENSIONS

R22/R40



R32

