

JZX-18FF

MINIATURE INTERMEDIATE POWER RELAY



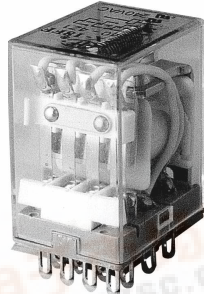
File No.:E133481



File No.:R9857429



File No.:CH0047993-2000



Features

- 7A switching capabilities
- 2 to 4 pole configurations
- 1.5KV dielectric coil to contacts
- Various terminals ,test button available JZX-18FH
- Au-claded contact available
- Conform to the CE low voltage directive

CONTACT DATA

Contact Arrangement	2C, 3C		4C	
Initial Contact Resistance Max.	50mΩ(1A 6VDC)			
Contact Material	Silver alloy			
Contact Rating (Res. Load)	5A, 7A/220VAC 30VDC		3A, 5A/220VAC 30VDC	
Max. switching voltage	250VAC/30VDC			
Max. switching current	5A	7A	3A	5A
Max. switching power	150W 1100VA	210W 1540VA	90W 660VA	150W 1100VA
UL/CUR rating	Standard:			
	2C/3C: 5A 250VAC/30VDC			
	4C: 3A 250VAC/30VDC			
	High Capacity:			
TÜV rating	2C/3C:7A 250VAC/30VDC			
	4C: 5A 250VAC/30VDC			
	2C: 5A 250VAC/30VDC			
	4C: 3A 250VAC/30VDC			
Mechanical life	2 x 10 ⁷ OPS			
Electrical life	High Capacity: 1 x 10 ⁵ OPS Standard: 2 x 10 ⁵ OPS			

CHARACTERISTICS

Initial Insulation Resistance		1000MΩ, 500VAC
Dielectric Strength	Between coil and Contacts	1500VAC 1min.
	Between open contacts	1000VAC 1min.
	Between contact sets	1500VAC 1min.
Operate time (at nomi. Volt.)		25ms
Release time (at nomi. Volt.)		25ms
Shock Resistance	Functional	100 m/s ²
	Destructive	1000 m/s ²
Vibration Resistance		1mm, 10 to 55Hz
Humidity		98%RH, +40°C
Ambient temperature		-55°C to +70°C
Termination		PCB & Socket
Unit weight		37g
Construction		Dust Cover

COIL

Coil power	DC:0.9W AC:1.2VA
------------	------------------

COIL DATA

Nominal Voltage VDC	Pick-up Voltage VDC	Drop-out Voltage VDC	Coil Resistance Ω
5	4.0	0.50	27.5 ± 10%
6	4.8	0.60	40 ± 10%
12	9.6	1.20	160 ± 10%
24	19.2	2.40	650 ± 10%
48	38.4	4.80	2600 ± 15%
110	88.0	11.0	11000 ± 15%

Nominal Voltage VAC	Pick-up Voltage VAC	Drop-out Voltage VAC	Coil Resistance Ω
6	4.80	1.80	11.5 ± 10%
12	9.60	3.60	46 ± 10%
24	19.2	7.20	184 ± 10%
48	38.4	14.4	735 ± 10%
120	96.0	36.0	4550 ± 15%
220/240	176.0	66.0	14400 ± 15%

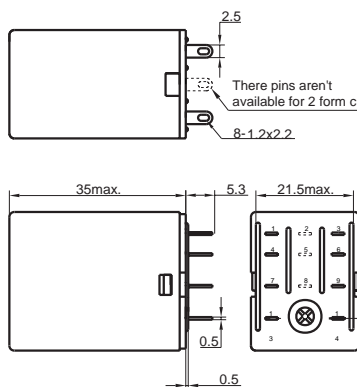
ORDERING INFORMATION

JZX-18FF /		A	012	2Z	1	Q	D
Type							
Coil Source A: AC NIL: DC							
Coil voltage DC: 5 to 110VDC AC: 6 to 240VAC							
Contact arrangement 2Z: 2Form C 3Z: 3Form C 4Z: 4Form C							
Mounting Termination		1:Type 1(Socket); 2:Type 2 (PCB); 3/4/5:Type 3/4/5 Flange-Mounting (See the Following)					
Capacity Q: High capacity NIL: Standard							
LED D: With LED NIL: Without LED							

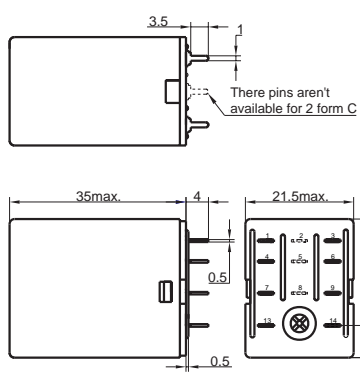
OUTLINE DIMENSIONS, WIRING DIAGRAM AND PC BOARD LAYOUT

Outline Dimensions

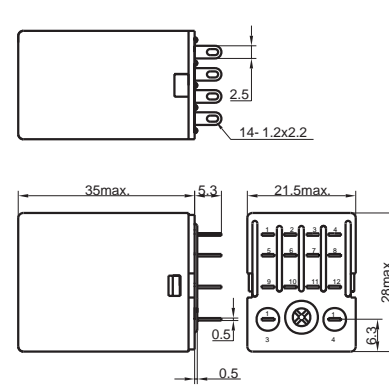
JZX-18FF/ -2Z1 /3Z1



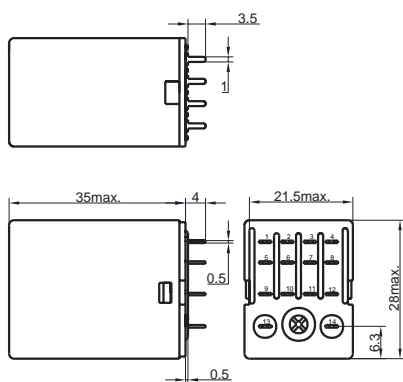
JZX-18FF/ -2Z2 /3Z2



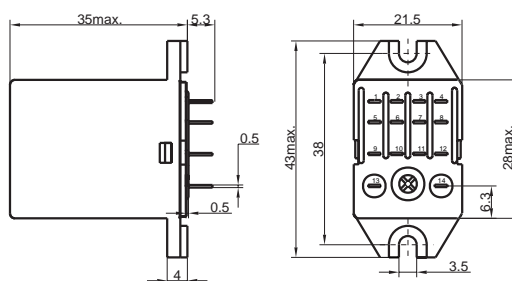
JZX-18FF/ -4Z1



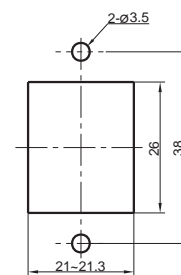
JZX-18FF/ -4Z2



JZX-18FF/ -4Z3

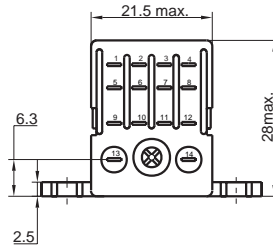
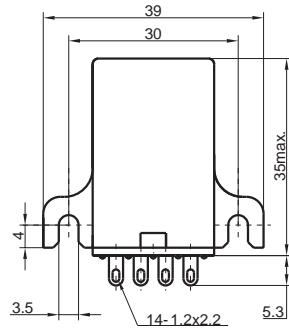


PCB layout

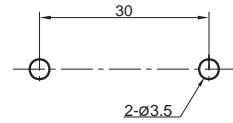


OUTLINE DIMENSIONS, WIRING DIAGRAM AND PC BOARD LAYOUT

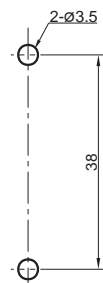
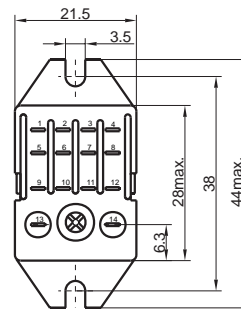
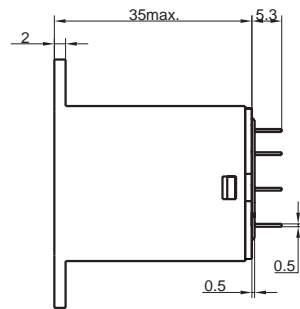
JZX-18FF/ - 4Z4



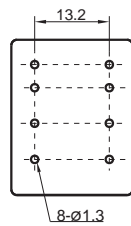
PCB Layout



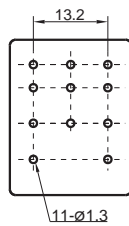
JZX-18FF/ - 4Z5



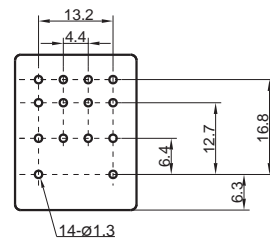
PCB Layout



2C(DPDT)

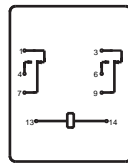


3C(3PDT)

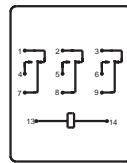


4C(4PDT)

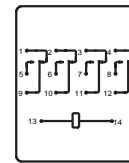
Wiring Diagram



2C(DPDT)



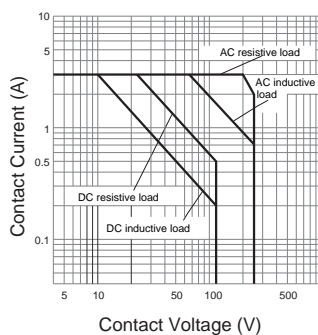
3C(3PDT)



4C(4PDT)

CHARACTERISTICS CURVE

MAXIMUM SWITCHING POWER



LIFE CURVE

