

TLE2027, TLE2037, TLE2027A, TLE2037A, TLE2027Y, TLE2037Y EXCALIBUR LOW-NOISE HIGH-SPEED PRECISION OPERATIONAL AMPLIFIERS

SLOS192 – FEBRUARY 1997

- **Outstanding Combination of dc Precision and AC Performance:**

Unity-Gain Bandwidth . . . 15 MHz Typ

V_n 3.3 nV/ $\sqrt{\text{Hz}}$ at $f = 10$ Hz Typ,
2.5 nV/ $\sqrt{\text{Hz}}$ at $f = 1$ kHz Typ

V_{IO} 25 μV Max

A_{VD} . . . 45 V/ μV Typ With $R_L = 2$ k Ω ,
19 V/ μV Typ With $R_L = 600$ Ω

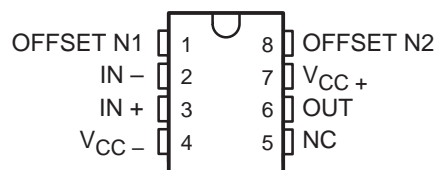
- Available in Standard-Pinout Small-Outline Package
- Output Features Saturation Recovery Circuitry
- Macromodels and Statistical information

description

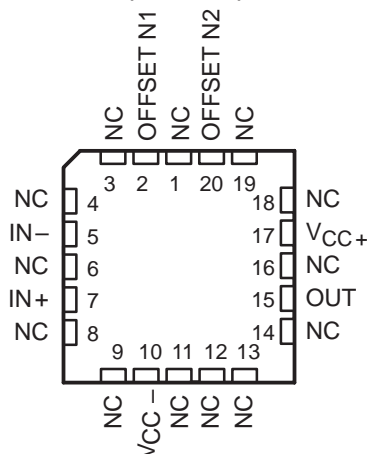
The TLE20x7 and TLE20x7A contain innovative circuit design expertise and high-quality process control techniques to produce a level of ac performance and dc precision previously unavailable in single operational amplifiers. Manufactured using Texas Instruments state-of-the-art Excalibur process, these devices allow upgrades to systems that use lower-precision devices.

In the area of dc precision, the TLE20x7 and TLE20x7A offer maximum offset voltages of 100 μV and 25 μV , respectively, common-mode rejection ratio of 131 dB (typ), supply voltage rejection ratio of 144 dB (typ), and dc gain of 45 V/ μV (typ).

D, JG, OR P PACKAGE
(TOP VIEW)



FK PACKAGE
(TOP VIEW)



AVAILABLE OPTIONS

T_A	$V_{IO\text{max}}$ AT 25°C	PACKAGED DEVICES				CHIP FORM† (Y)
		SMALL OUTLINE† (D)	CHIP CARRIER (FK)	CERAMIC DIP (JG)	PLASTIC DIP (P)	
0°C to 70°C	25 μV	TLE2027ACD TLE2037ACD	— —	— —	TLE2027ACP TLE2037ACP	TLE2027Y TLE2037Y
	100 μV	TLE2027CD TLE2037CD	— —	— —	TLE2027CP TLE2037CP	TLE2027Y TLE2037Y
-40°C to 105°C	25 μV	TLE2027AID TLE2037AID	— —	— —	TLE2027AIP TLE2037AIP	—
	100 μV	TLE2027ID TLE2037ID	— —	— —	TLE2027IP TLE2037IP	—
-55°C to 125°C	25 μV	TLE2027AMD TLE2037AMD	TLE2027AMFK TLE2037AMFK	TLE2027AMJG TLE2037AMJG	TLE2027AMP TLE2037AMP	—
	100 μV	TLE2027MD TLE2037MD	TLE2027MFK TLE2037MFK	TLE2027MJG TLE2037MJG	TLE2027MP TLE2037MP	—

† The D packages are available taped and reeled. Add R suffix to device type (e.g., TLE2027ACDR).

‡ Chip forms are tested at 25°C only.



Please be aware that an important notice concerning availability, standard warranty, and use in critical applications of Texas Instruments semiconductor products and disclaimers thereto appears at the end of this data sheet.

PRODUCTION DATA information is current as of publication date. Products conform to specifications per the terms of Texas Instruments standard warranty. Production processing does not necessarily include testing of all parameters.

**TEXAS
INSTRUMENTS**

POST OFFICE BOX 655303 • DALLAS, TEXAS 75265

Copyright © 1997, Texas Instruments Incorporated

TLE2027, TLE2037, TLE2027A, TLE2037A, TLE2027Y, TLE2037Y

EXCALIBUR LOW-NOISE HIGH-SPEED PRECISION OPERATIONAL AMPLIFIERS

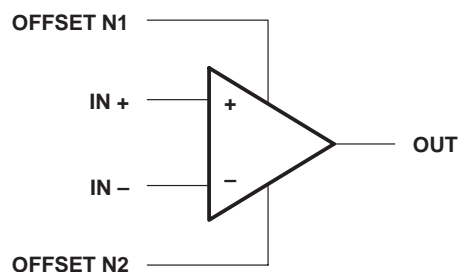
SLOS192 – FEBRUARY 1997

description (continued)

The ac performance of the TLE2027 and TLE2037 is highlighted by a typical unity-gain bandwidth specification of 15 MHz, 55° of phase margin, and noise voltage specifications of 3.3 nV/ $\sqrt{\text{Hz}}$ and 2.5 nV/ $\sqrt{\text{Hz}}$ at frequencies of 10 Hz and 1 kHz respectively. The TLE2037 and TLE2037A have been decompensated for faster slew rate ($-7.5 \text{ V}/\mu\text{s}$, typical) and wider bandwidth (50 MHz). To ensure stability, the TLE2037 and TLE2037A should be operated with a closed-loop gain of 5 or greater.

Both the TLE20x7 and TLE20x7A are available in a wide variety of packages, including the industry-standard 8-pin small-outline version for high-density system applications. The C-suffix devices are characterized for operation from 0°C to 70°C. The I-suffix devices are characterized for operation from -40°C to 105°C . The M-suffix devices are characterized for operation over the full military temperature range of -55°C to 125°C .

symbol

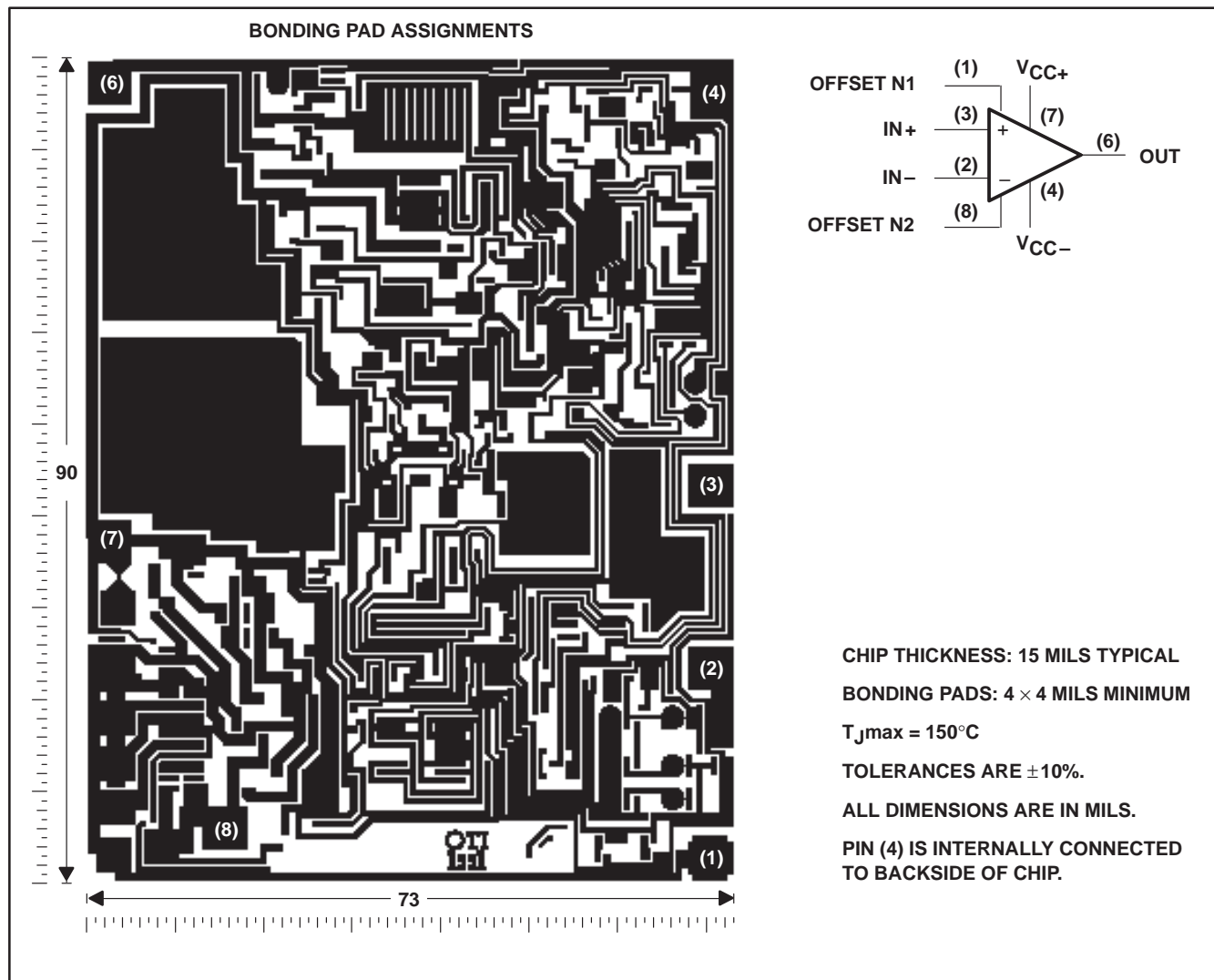


TLE2027, TLE2037, TLE2027A, TLE2037A, TLE2027Y, TLE2037Y EXCALIBUR LOW-NOISE HIGH-SPEED PRECISION OPERATIONAL AMPLIFIERS

SLOS192 – FEBRUARY 1997

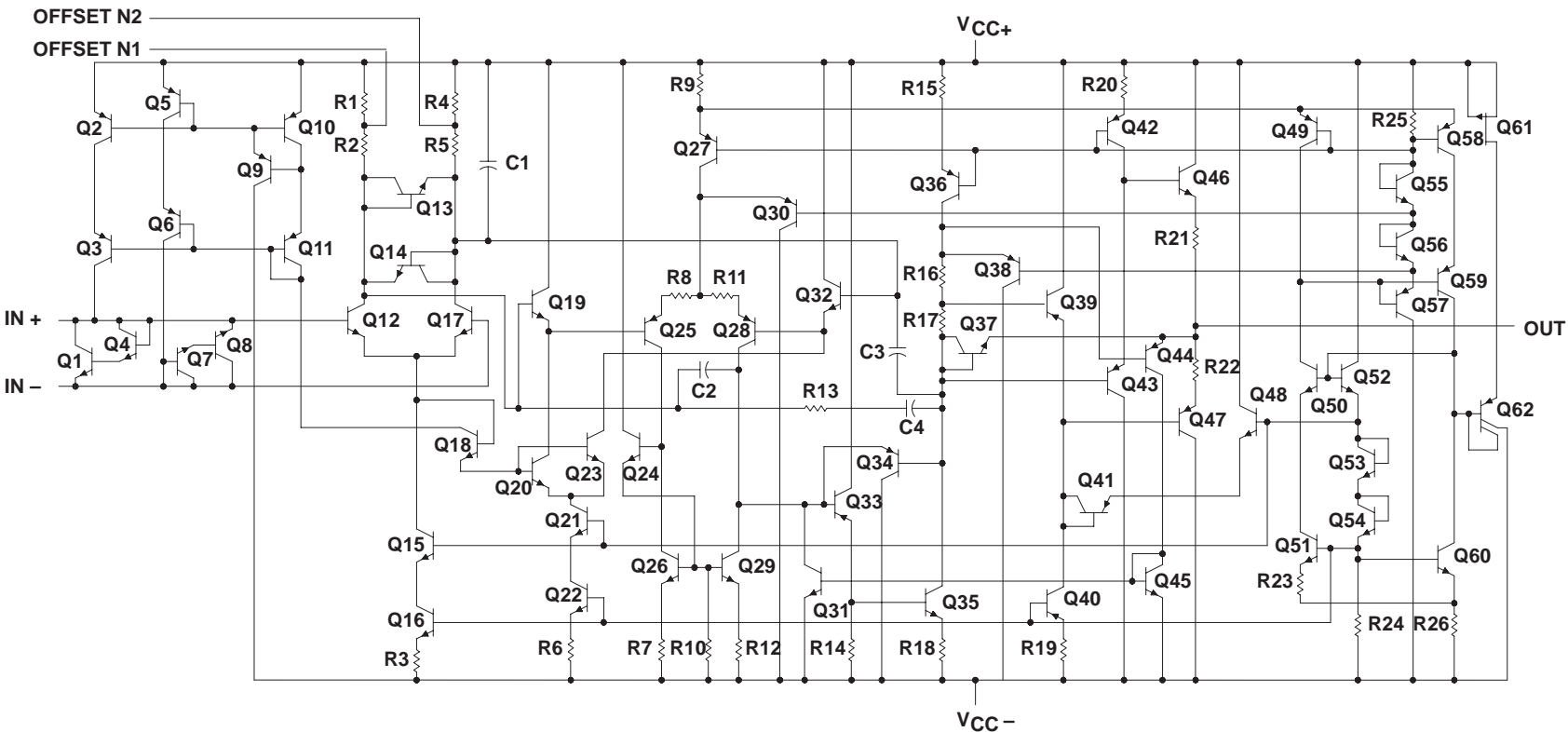
TLE202xY chip information

This chip, when properly assembled, displays characteristics similar to the TLE202xC. Thermal compression or ultrasonic bonding may be used on the doped-aluminum bonding pads. The chip may be mounted with conductive epoxy or a gold-silicon preform.



TLE2027, TLE2037, TLE2027A, TLE2037A, TLE2027Y, TLE2037Y
EXCALIBUR LOW-NOISE HIGH-SPEED
PRECISION OPERATIONAL AMPLIFIERS
SLOS192 – FEBRUARY 1997

equivalent schematic



ACTUAL DEVICE COMPONENT COUNT		
COMPONENT	TLE2027	TLE2037
Transistors	61	61
Resistors	26	26
epiFET	1	1
Capacitors	4	4

TLE2027, TLE2037, TLE2027A, TLE2037A, TLE2027Y, TLE2037Y

EXCALIBUR LOW-NOISE HIGH-SPEED PRECISION OPERATIONAL AMPLIFIERS

SLOS192 – FEBRUARY 1997

absolute maximum ratings over operating free-air temperature range (unless otherwise noted)[†]

Supply voltage, V_{CC+} (see Note 1)	19 V
Supply voltage, V_{CC-}	– 19 V
Differential input voltage, V_{ID} (see Note 2)	± 1.2 V
Input voltage range, V_I (any input)	$V_{CC\pm}$
Input current, I_I (each Input)	± 1 mA
Output current, I_O	± 50 mA
Total current into V_{CC+}	50 mA
Total current out of V_{CC-}	50 mA
Duration of short-circuit current at (or below) 25°C (see Note 3)	unlimited
Continuous total power dissipation	See Dissipation Rating Table
Operating free-air temperature range, T_A : C suffix	0°C to 70°C
I suffix	– 40°C to 105°C
M suffix	– 55°C to 125°C
Storage temperature range, T_{stg}	– 65°C to 150°C
Case temperature for 60 seconds, T_C : FK package	260°C
Lead temperature 1,6 mm (1/16 inch) from case for 10 seconds: D or P package	260°C
Lead temperature 1,6 mm (1/16 inch) from case for 60 seconds: JG package	300°C

[†] Stresses beyond those listed under “absolute maximum ratings” may cause permanent damage to the device. These are stress ratings only, and functional operation of the device at these or any other conditions beyond those indicated under “recommended operating conditions” is not implied. Exposure to absolute-maximum-rated conditions for extended periods may affect device reliability.

- NOTES:
1. All voltage values, except differential voltages, are with respect to the midpoint between V_{CC+} and V_{CC-} .
 2. Differential voltages are at $IN+$ with respect to $IN-$. Excessive current flows if a differential input voltage in excess of approximately ± 1.2 V is applied between the inputs unless some limiting resistance is used.
 3. The output may be shorted to either supply. Temperature and/or supply voltages must be limited to ensure that the maximum dissipation rating is not exceeded.

DISSIPATION RATING TABLE

PACKAGE	$T_A \leq 25^\circ\text{C}$ POWER RATING	DERATING FACTOR ABOVE $T_A = 25^\circ\text{C}$	$T_A = 70^\circ\text{C}$ POWER RATING	$T_A = 105^\circ\text{C}$ POWER RATING	$T_A = 125^\circ\text{C}$ POWER RATING
D	725 mW	5.8 mW/°C	464 mW	261 mW	145 mW
FK	1375 mW	11.0 mW/°C	880 mW	495 mW	275 mW
JG	1050 mW	8.4 mW/°C	672 mW	378 mW	210 mW
P	1000 mW	8.0 mW/°C	640 mW	360 mW	200 mW

recommended operating conditions

		C SUFFIX		I SUFFIX		M SUFFIX		UNIT
		MIN	MAX	MIN	MAX	MIN	MAX	
Supply voltage, $V_{CC\pm}$		± 4	± 19	± 4	± 19	± 4	± 19	V
Common-mode input voltage, V_{IC}	$T_A = 25^\circ\text{C}$	– 11	11	– 11	11	– 11	11	V
	$T_A = \text{Full range}^\ddagger$	– 10.5	10.5	– 10.4	10.4	– 10.2	10.2	
Operating free-air temperature, T_A		0	70	– 40	105	– 55	125	°C

[‡] Full range is 0°C to 70°C for C-suffix devices, – 40°C to 105°C for I-suffix devices, and – 55°C to 125°C for M-suffix devices.



TLE2027, TLE2037, TLE2027A, TLE2037A, TLE2027Y, TLE2037Y
EXCALIBUR LOW-NOISE HIGH-SPEED
PRECISION OPERATIONAL AMPLIFIERS

SLOS192 – FEBRUARY 1997

TLE20x7C electrical characteristics at specified free-air temperature, $V_{CC\pm} = \pm 15\text{ V}$ (unless otherwise noted)

PARAMETER		TEST CONDITIONS	T _A [†]	TLE20x7C			TLE20x7AC			UNIT
				MIN	TYP	MAX	MIN	TYP	MAX	
V _{IO}	Input offset voltage	V _{IC} = 0, R _S = 50 Ω	25°C	20 100		10 25		μV		
			Full range	145		70				
α _{VIO}	Temperature coefficient of input offset voltage		Full range	0.4 1		0.2 1		μV/°C		
	Input offset voltage long-term drift (see Note 4)		25°C	0.006 1		0.006 1		μV/mo		
I _{IO}	Input offset current		25°C	6 90		6 90		nA		
			Full range	150		150				
I _{IB}	Input bias current		25°C	15 90		15 90		nA		
			Full range	150		150				
V _{ICR}	Common-mode input voltage range	R _S = 50 Ω	25°C	–11 to 11	–13 to 13	–11 to 11	–13 to 13	V		
			Full range	–10.5 to 10.5		–10.5 to 10.5				
V _{OM} +	Maximum positive peak output voltage swing	R _L = 600 Ω	25°C	10.5	12.9	10.5	12.9	V		
			Full range	10		10				
		R _L = 2 kΩ	25°C	12	13.2	12	13.2			
			Full range	11		11				
V _{OM} –	Maximum negative peak output voltage swing	R _L = 600 Ω	25°C	–10.5	–13	–10.5	–13	V		
			Full range	–10		–10				
		R _L = 2 kΩ	25°C	–12	–13.5	–12	–13.5			
			Full range	–11		–11				
A _{VD}	Large-signal differential voltage amplification	V _O = ±11 V, R _L = 2 kΩ	25°C	5	45	10	45	V/μV		
		V _O = ±10 V, R _L = 2 kΩ	Full range	2		4				
		V _O = ±10 V, R _L = 1 kΩ	25°C	3.5	38	8	38			
			Full range	1		2.5				
		V _O = ±10 V, R _L = 600 Ω	25°C	2	19	5	19			
			Full range	0.5		2				
C _i	Input capacitance		25°C	8		8		pF		
z _o	Open-loop output impedance	I _O = 0	25°C	50		50		Ω		
CMRR	Common-mode rejection ratio	V _{IC} = V _{ICRmin} , R _S = 50 Ω	25°C	100	131	117	131	dB		
			Full range	98		114				
k _{SVR}	Supply-voltage rejection ratio (ΔV _{CC±} /ΔV _{IO})	V _{CC±} = ±4 V to ±18 V, R _S = 50 Ω	25°C	94	144	110	144	dB		
		V _{CC±} = ±4 V to ±18 V, R _S = 50 Ω	Full range	92		106				
I _{CC}	Supply current	V _O = 0, No load	25°C	3.8 5.3		3.8 5.3		mA		
			Full range	5.6		5.6				

† Full range is 0°C to 70°C.

NOTE 4: Typical values are based on the input offset voltage shift observed through 168 hours of operating life test at $T_A = 150^\circ\text{C}$ extrapolated to $T_A = 25^\circ\text{C}$ using the Arrhenius equation and assuming an activation energy of 0.96 eV.



TLE2027, TLE2037, TLE2027A, TLE2037A, TLE2027Y, TLE2037Y
EXCALIBUR LOW-NOISE HIGH-SPEED
PRECISION OPERATIONAL AMPLIFIERS

SLOS192 – FEBRUARY 1997

TLE20x7C operating characteristics at specified free-air temperature, $V_{CC} \pm = \pm 15\text{ V}$, $T_A = 25^\circ\text{C}$ (unless otherwise specified)

PARAMETER		TEST CONDITIONS		TLE20x7C			TLE20x7AC			UNIT
				MIN	TYP	MAX	MIN	TYP	MAX	
SR	Slew rate at unity gain	R _L = 2 kΩ, C _L = 100 pF, See Figure 1	TLE2027	1.7	2.8		1.7	2.8		V/μs
			TLE2037	6	7.5		6	7.5		
		R _L = 2 kΩ, C _L = 100 pF, T _A = 0°C to 70°C, See Figure 1	TLE2027	1.2			1.2			
			TLE2037	5			5			
V _n	Equivalent input noise voltage (see Figure 2)	R _S = 20 Ω, f = 10 Hz		3.3	8		3.3	4.5	nV/√Hz	
		R _S = 20 Ω, f = 1 kHz		2.5	4.5		2.5	3.8		
V _{N(PP)}	Peak-to-peak equivalent input noise voltage	f = 0.1 Hz to 10 Hz			50	250	50	130	nV	
I _n	Equivalent input noise current	f = 10 Hz		1.5	4	1.5	4	pA/√Hz		
		f = 1 kHz		0.4	0.6	0.4	0.6			
THD	Total harmonic distortion	V _O = +10 V, A _{VD} = 1, See Note 5	TLE2027	<0.002%		<0.002%				
		V _O = +10 V, A _{VD} = 5, See Note 5	TLE2037	<0.002%		<0.002%				
B ₁	Unity-gain bandwidth (see Figure 3)	R _L = 2 kΩ, C _L = 100 pF	TLE2027	7	13	9	13	MHz		
			TLE2037	35	50	35	50			
B _{OM}	Maximum output-swing bandwidth	R _L = 2 kΩ	TLE2027	30		30		kHz		
			TLE2037	80		80				
φ _m	Phase margin at unity gain (see Figure 3)	R _L = 2 kΩ, C _L = 100 pF	TLE2027	55°		55°				
			TLE2037	50°		50°				

NOTE 5: Measured distortion of the source used in the analysis was 0.002%.

TLE2027, TLE2037, TLE2027A, TLE2037A, TLE2027Y, TLE2037Y
EXCALIBUR LOW-NOISE HIGH-SPEED
PRECISION OPERATIONAL AMPLIFIERS

SLOS192 – FEBRUARY 1997

TLE20x7I electrical characteristics at specified free-air temperature, $V_{CC\pm} = \pm 15$ V (unless otherwise noted)

PARAMETER		TEST CONDITIONS	T _A †	TLE20x7I			TLE20x7AI			UNIT
				MIN	TYP	MAX	MIN	TYP	MAX	
V _{IO}	Input offset voltage	V _{IC} = 0, R _S = 50 Ω	25°C	20 100		10 25		μV		
	Full range		180		105					
α _{VIO}	Temperature coefficient of input offset voltage		Full range	0.4 1		0.2 1		μV/°C		
	Input offset voltage long-term drift (see Note 4)		25°C	0.006 1		0.006 1		μV/mo		
I _{IO}	Input offset current		25°C	6 90		6 90		nA		
			Full range	150		150				
I _{IB}	Input bias current		25°C	15 90		15 90		nA		
			Full range	150		150				
V _{ICR}	Common-mode input voltage range	R _S = 50 Ω	25°C	–11 to 11 –13 to 13		–11 to 11 –13 to 13		V		
			Full range	–10.4 to 10.4		–10.4 to 10.4				
V _{OM} +	Maximum positive peak output voltage swing	R _L = 600 Ω	25°C	10.5 12.9		10.5 12.9		V		
			Full range	10		10				
		R _L = 2 kΩ	25°C	12 13.2		12 13.2				
			Full range	11		11				
V _{OM} –	Maximum negative peak output voltage swing	R _L = 600 Ω	25°C	–10.5 –13		–10.5 –13		V		
			Full range	–10		–10				
		R _L = 2 kΩ	25°C	–12 –13.5		–12 –13.5				
			Full range	–11		–11				
A _{VD}	Large-signal differential voltage amplification	V _O = ±11 V, R _L = 2 kΩ	25°C	5 45		10 45		V/μV		
		V _O = ±10 V, R _L = 2 kΩ	Full range	2		3.5				
		V _O = ±10 V, R _L = 1 kΩ	25°C	3.5 38		8 38				
			Full range	1		2.2				
		V _O = ±10 V, R _L = 600 Ω	25°C	2 19		5 19				
			Full range	0.5		1.1				
C _i	Input capacitance		25°C	8		8		pF		
z _o	Open-loop output impedance	I _O = 0	25°C	50		50		Ω		
CMRR	Common-mode rejection ratio	V _{IC} = V _{ICRmin} , R _S = 50 Ω	25°C	100 131		117 131		dB		
			Full range	96		113				
k _{SVR}	Supply-voltage rejection ratio (ΔV _{CC±} /ΔV _{IO})	V _{CC±} = ±4 V to ±18 V, R _S = 50 Ω	25°C	94 144		110 144		dB		
		V _{CC±} = ±4 V to ±18 V, R _S = 50 Ω	Full range	90		105				
I _{CC}	Supply current	V _O = 0, No load	25°C	3.8 5.3		3.8 5.3		mA		
			Full range	5.6		5.6				

† Full range is –40°C to 105°C.

NOTE 4: Typical values are based on the input offset voltage shift observed through 168 hours of operating life test at $T_A = 150^\circ C$ extrapolated to $T_A = 25^\circ C$ using the Arrhenius equation and assuming an activation energy of 0.96 eV.



TLE2027, TLE2037, TLE2027A, TLE2037A, TLE2027Y, TLE2037Y
EXCALIBUR LOW-NOISE HIGH-SPEED
PRECISION OPERATIONAL AMPLIFIERS

SLOS192 – FEBRUARY 1997

TLE20x7I operating characteristics at specified free-air temperature, $V_{CC} \pm = \pm 15\text{ V}$, $T_A = 25^\circ\text{C}$ (unless otherwise specified)

PARAMETER		TEST CONDITIONS		TLE20x7I			TLE20x7AI			UNIT
				MIN	TYP	MAX	MIN	TYP	MAX	
SR	Slew rate at unity gain	R _L = 2 kΩ, C _L = 100 pF, See Figure 1	TLE2027	1.7	2.8		1.7	2.8		V/μs
			TLE2037	6	7.5		6	7.5		
		R _L = 2 kΩ, C _L = 100 pF, T _A = −40°C to 85°C, See Figure 1	TLE2027	1.1			1.1			
			TLE2037	4.7			4.7			
V _n	Equivalent input noise voltage (see Figure 2)	R _S = 20 Ω, f = 10 Hz		3.3	8		3.3	4.5	nV/√Hz	
		R _S = 20 Ω, f = 1 kHz		2.5	4.5		2.5	3.8		
V _{N(PP)}	Peak-to-peak equivalent input noise voltage	f = 0.1 Hz to 10 Hz		50	250		50	130	nV	
I _n	Equivalent input noise current	f = 10 Hz		1.5	4		1.5	4	pA/√Hz	
		f = 1 kHz		0.4	0.6		0.4	0.6		
THD	Total harmonic distortion	V _O = +10 V, A _{VD} = 1, See Note 5	TLE2027	< 0.002%			< 0.002%			
		V _O = +10 V, A _{VD} = 5, See Note 5	TLE2037	< 0.002%			< 0.002%			
B ₁	Unity-gain bandwidth (see Figure 3)	R _L = 2 kΩ, C _L = 100 pF	TLE2027	7	13		9	13	MHz	
			TLE2037	35	50		35	50		
B _{OM}	Maximum output-swing bandwidth	R _L = 2 kΩ	TLE2027	30			30		kHz	
			TLE2037	80			80			
ϕ _m	Phase margin at unity gain (see Figure 3)	R _L = 2 kΩ, C _L = 100 pF	TLE2027	55°			55°			
			TLE2037	50°			50°			

NOTE 5: Measured distortion of the source used in the analysis was 0.002%.

TLE2027, TLE2037, TLE2027A, TLE2037A, TLE2027Y, TLE2037Y
EXCALIBUR LOW-NOISE HIGH-SPEED
PRECISION OPERATIONAL AMPLIFIERS

SLOS192 – FEBRUARY 1997

TLE20x7M electrical characteristics at specified free-air temperature, $V_{CC\pm} = \pm 15\text{ V}$ (unless otherwise noted)

PARAMETER		TEST CONDITIONS	T _A †	TLE20x7M			TLE20x7AM			UNIT
				MIN	TYP	MAX	MIN	TYP	MAX	
V _{IO}	Input offset voltage	V _{IC} = 0, R _S = 50 Ω	25°C	20	100	10	25	μV		
			Full range	200			105			
α _{VIO}	Temperature coefficient of input offset voltage		Full range	0.4	1*	0.2	1*	μV/°C		
	Input offset voltage long-term drift (see Note 4)		25°C	0.006	1*	0.006	1*	μV/mo		
I _{IO}	Input offset current		25°C	6	90	6	90	nA		
			Full range	150			150			
I _{IB}	Input bias current		25°C	15	90	15	90	nA		
			Full range	150			150			
V _{ICR}	Common-mode input voltage range	R _S = 50 Ω	25°C	–11 to 11	–13 to 13	–11 to 11	–13 to 13	V		
			Full range	–10.3 to 10.3			–10.4 to 10.4			
V _{OM} +	Maximum positive peak output voltage swing	R _L = 600 Ω	25°C	10.5	12.9	10.5	12.9	V		
			Full range	10			10			
		R _L = 2 kΩ	25°C	12	13.2	12	13.2			
			Full range	11			11			
V _{OM} –	Maximum negative peak output voltage swing	R _L = 600 Ω	25°C	–10.5	–13	–10.5	–13	V		
			Full range	–10			–10			
		R _L = 2 kΩ	25°C	–12	–13.5	–12	–13.5			
			Full range	–11			–11			
A _{VD}	Large-signal differential voltage amplification	V _O = ±11 V, R _L = 2 kΩ	25°C	5	45	10	45	V/μV		
		V _O = ±10 V, R _L = 2 kΩ	Full range	2.5			3.5			
		V _O = ±10 V, R _L = 1 kΩ	25°C	3.5	38	8	38			
			Full range	1.8			2.2			
		V _O = ±10 V, R _L = 600 Ω	25°C	2	19	5	19			
C _i	Input capacitance		25°C	8			8	pF		
z _o	Open-loop output impedance	I _O = 0	25°C	50			50	Ω		
CMRR	Common-mode rejection ratio	V _{IC} = V _{ICRmin} , R _S = 50 Ω	25°C	100	131	117	131	dB		
			Full range	96			113			
k _{SVR}	Supply-voltage rejection ratio (ΔV _{CC±} /ΔV _{IO})	V _{CC±} = ±4 V to ±18 V, R _S = 50 Ω	25°C	94	144	110	144	dB		
		V _{CC±} = ±4 V to ±18 V, R _S = 50 Ω	Full range	90			105			
I _{CC}	Supply current	V _O = 0, No load	25°C	3.8	5.3	3.8	5.3	mA		
			Full range				5.6			

* On products compliant to MIL-PRF-38535, this parameter is not production tested.

† Full range is –55°C to 125°C.

NOTE 4: Typical values are based on the input offset voltage shift observed through 168 hours of operating life test at $T_A = 150^\circ\text{C}$ extrapolated to $T_A = 25^\circ\text{C}$ using the Arrhenius equation and assuming an activation energy of 0.96 eV.



TLE2027, TLE2037, TLE2027A, TLE2037A, TLE2027Y, TLE2037Y
EXCALIBUR LOW-NOISE HIGH-SPEED
PRECISION OPERATIONAL AMPLIFIERS

SLOS192 – FEBRUARY 1997

TLE20x7M operating characteristics at specified free-air temperature, $V_{CC} \pm = \pm 15\text{ V}$, $T_A = 25^\circ\text{C}$ (unless otherwise specified)

PARAMETER		TEST CONDITIONS		TLE20x7M			TLE20x7AM			UNIT
				MIN	TYP	MAX	MIN	TYP	MAX	
SR	Slew rate at unity gain	R _L = 2 kΩ, C _L = 100 pF, See Figure 1	TLE2027	1.7	2.8		1.7	2.8		V/μs
			TLE2037	6*	7.5		6*	7.5		
		R _L = 2 kΩ, C _L = 100 pF, T _A = −55°C to 125°C, See Figure 1	TLE2027	1			1			
			TLE2037	4.4*			4.4*			
V _n	Equivalent input noise voltage (see Figure 2)	R _S = 20 Ω, f = 10 Hz		3.3	8*		3.3	4.5*	nV/√Hz	
		R _S = 20 Ω, f = 1 kHz		2.5	4.5*		2.5	3.8*		
V _{N(PP)}	Peak-to-peak equivalent input noise voltage	f = 0.1 Hz to 10 Hz			50	250*	50	130*	nV	
I _n	Equivalent input noise current	f = 10 Hz		1.5	4*	1.5	4*	pA/√Hz		
		f = 1 kHz		0.4	0.6*	0.4	0.6*			
THD	Total harmonic distortion	V _O = +10 V, A _{VD} = 1, See Note 5	TLE2027	< 0.002%		< 0.002%				
		V _O = +10 V, A _{VD} = 5, See Note 5	TLE2037	< 0.002%		< 0.002%				
B ₁	Unity-gain bandwidth (see Figure 3)	R _L = 2 kΩ, C _L = 100 pF	TLE2027	7*	13	9*	13	MHz		
			TLE2037	35	50	35	50			
B _{OM}	Maximum output-swing bandwidth	R _L = 2 kΩ	TLE2027	30		30		kHz		
			TLE2037	80		80				
ϕ _m	Phase margin at unity gain (see Figure 3)	R _L = 2 kΩ, C _L = 100 pF	TLE2027	55°		55°				
			TLE2037	50°		50°				

* On products compliant to MIL-PRF-38535, this parameter is not production tested.

NOTE 5: Measured distortion of the source used in the analysis was 0.002%.

TLE2027, TLE2037, TLE2027A, TLE2037A, TLE2027Y, TLE2037Y

EXCALIBUR LOW-NOISE HIGH-SPEED PRECISION OPERATIONAL AMPLIFIERS

SLOS192 – FEBRUARY 1997

TLE20x7Y electrical characteristics, $V_{CC\pm} = \pm 15\text{ V}$, $T_A = 25^\circ\text{C}$ (unless otherwise noted)

PARAMETER	TEST CONDITIONS	TLE20x7Y			UNIT
		MIN	TYP	MAX	
V_{IO} Input offset voltage	$V_{IC} = 0$, $R_S = 50\ \Omega$		20		μV
Input offset voltage long-term drift (see Note 4)			0.006		$\mu\text{V}/\text{mo}$
I_{IO} Input offset current			6		nA
I_{IB} Input bias current			15		nA
V_{ICR} Common-mode input voltage range	$R_S = 50\ \Omega$		–13 to 13		V
V_{OM+} Maximum positive peak output voltage swing	$R_L = 600\ \Omega$		12.9		V
	$R_L = 2\ \text{k}\Omega$		13.2		
V_{OM-} Maximum negative peak output voltage swing	$R_L = 600\ \Omega$		–13		V
	$R_L = 2\ \text{k}\Omega$		–13.5		
A_{VD} Large-signal differential voltage amplification	$V_O = \pm 11\text{ V}$, $R_L = 2\ \text{k}\Omega$		45		V/ μV
	$V_O = \pm 10\text{ V}$, $R_L = 1\ \text{k}\Omega$		38		
	$V_O = \pm 10\text{ V}$, $R_L = 600\ \Omega$		19		
C_i Input capacitance			8		pF
z_o Open-loop output impedance	$I_O = 0$		50		Ω
CMRR Common-mode rejection ratio	$V_{IC} = V_{ICRmin}$, $R_S = 50\ \Omega$		131		dB
k_{SVR} Supply-voltage rejection ratio ($\Delta V_{CC\pm} / \Delta V_{IO}$)	$V_{CC\pm} = \pm 4\text{ V}$ to $\pm 18\text{ V}$, $R_S = 50\ \Omega$		144		dB
I_{CC} Supply current	$V_O = 0$, No load		3.8		mA

NOTE 4: Typical values are based on the input offset voltage shift observed through 168 hours of operating life test at $T_A = 150^\circ\text{C}$ extrapolated to $T_A = 25^\circ\text{C}$ using the Arrhenius equation and assuming an activation energy of 0.96 eV.

TLE2027, TLE2037, TLE2027A, TLE2037A, TLE2027Y, TLE2037Y
EXCALIBUR LOW-NOISE HIGH-SPEED
PRECISION OPERATIONAL AMPLIFIERS

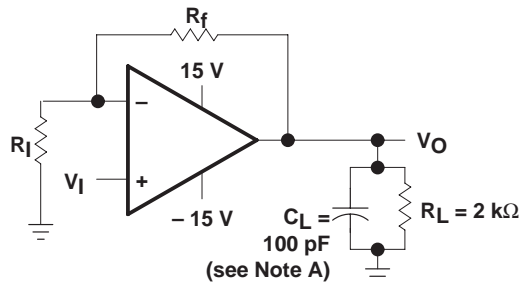
SLOS192 – FEBRUARY 1997

TLE20x7Y operating characteristics at specified free-air temperature, $V_{CC} \pm = \pm 15$ V

PARAMETER		TEST CONDITIONS		TLE20x7Y			UNIT
				MIN	TYP	MAX	
SR	Slew rate at unity gain	$R_L = 2\text{ k}\Omega$, $C_L = 100\text{ pF}$, See Figure 1	TLE2027		2.8		V/ μ s
			TLE2037		7.5		
V_n	Equivalent input noise voltage (see Figure 2)	$R_S = 20\text{ }\Omega$, $f = 10\text{ Hz}$			3.3		nV/ $\sqrt{\text{Hz}}$
		$R_S = 20\text{ }\Omega$, $f = 1\text{ kHz}$			2.5		
$V_{N(PP)}$	Peak-to-peak equivalent input noise voltage	$f = 0.1\text{ Hz to }10\text{ Hz}$			50		nV
I_n	Equivalent input noise current	$f = 10\text{ Hz}$			1.5		pA/ $\sqrt{\text{Hz}}$
		$f = 1\text{ kHz}$			0.4		
THD	Total harmonic distortion	$V_O = +10\text{ V}$, $A_{VD} = 1$, See Note 5	TLE2027		<0.002%		
		$V_O = +10\text{ V}$, $A_{VD} = 5$, See Note 5	TLE2037		<0.002%		
B_1	Unity-gain bandwidth (see Figure 3)	$R_L = 2\text{ k}\Omega$, $C_L = 100\text{ pF}$	TLE2027		13		MHz
			TLE2037		50		
B_{OM}	Maximum output-swing bandwidth	$R_L = 2\text{ k}\Omega$	TLE2027		30		kHz
			TLE2037		80		
ϕ_m	Phase margin at unity gain (see Figure 3)	$R_L = 2\text{ k}\Omega$, $C_L = 100\text{ pF}$	TLE2027		55°		
			TLE2037		50°		

NOTE 5: Measured distortion of the source used in the analysis was 0.002%.

PARAMETER MEASUREMENT INFORMATION



NOTE A: C_L includes fixture capacitance.

Figure 1. Slew-Rate Test Circuit

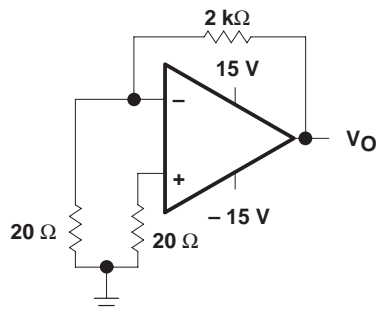
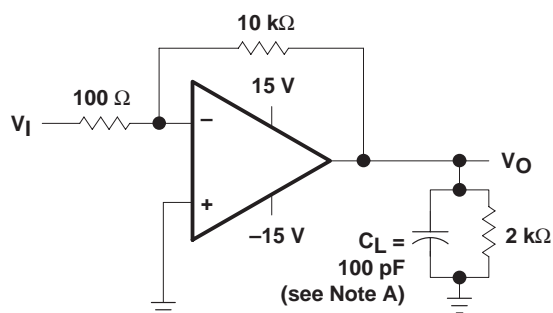
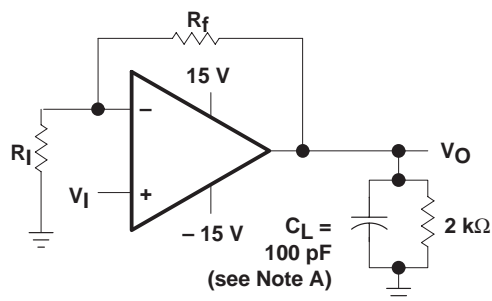


Figure 2. Noise-Voltage Test Circuit



NOTE A: C_L includes fixture capacitance.

Figure 3. Unity-Gain Bandwidth and Phase-Margin Test Circuit (TLE2027 Only)



NOTES: A. C_L includes fixture capacitance.
B. For the TLE2037 and TLE2037A, A_{VD} must be ≥ 5 .

Figure 4. Small-Signal Pulse-Response Test Circuit

typical values

Typical values presented in this data sheet represent the median (50% point) of device parametric performance.

initial estimates of parameter distributions

In the ongoing program of improving data sheets and supplying more information to our customers, Texas Instruments has added an estimate of not only the typical values but also the spread around these values. These are in the form of distribution bars that show the 95% (upper) points and the 5% (lower) points from the characterization of the initial wafer lots of this new device type (see Figure 5). The distribution bars are shown at the points where data was actually collected. The 95% and 5% points are used instead of ± 3 sigma since some of the distributions are not true Gaussian distributions.

The number of units tested and the number of different wafer lots used are on all of the graphs where distribution bars are shown. As noted in Figure 5, there were a total of 835 units from two wafer lots. In this case, there is a good estimate for the within-lot variability and a possibly poor estimate of the lot-to-lot variability. This is always the case on newly released products since there can only be data available from a few wafer lots.

The distribution bars are not intended to replace the minimum and maximum limits in the electrical tables. Each distribution bar represents 90% of the total units tested at a specific temperature. While 10% of the units tested fell outside any given distribution bar, this should not be interpreted to mean that the same individual devices fell outside every distribution bar.

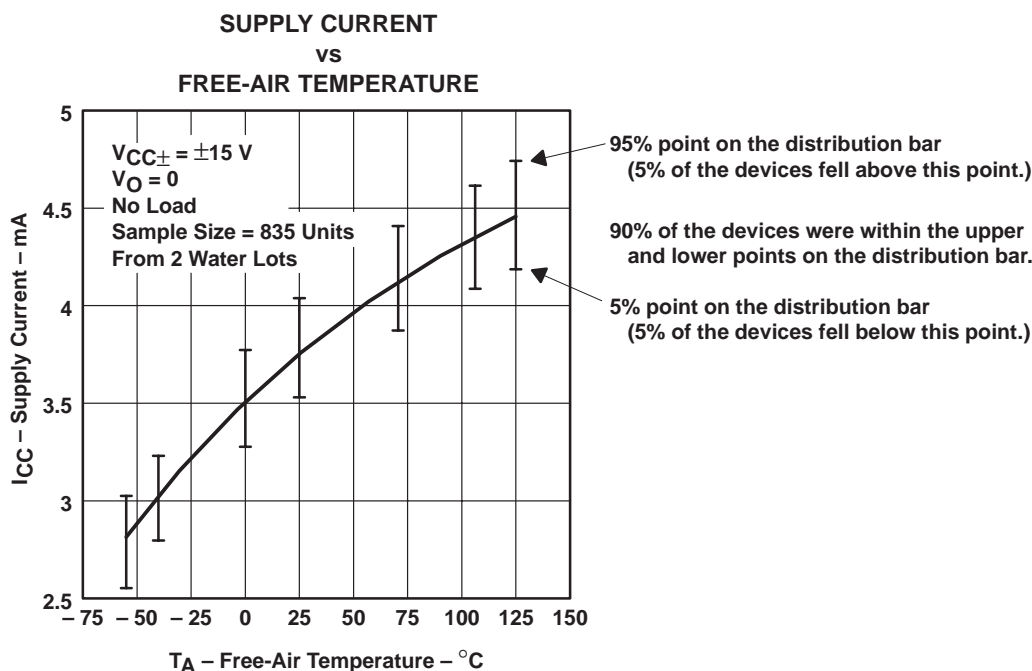


Figure 5. Sample Graph With Distribution Bars

TLE2027, TLE2037, TLE2027A, TLE2037A, TLE2027Y, TLE2037Y

EXCALIBUR LOW-NOISE HIGH-SPEED PRECISION OPERATIONAL AMPLIFIERS

SLOS192 – FEBRUARY 1997

TYPICAL CHARACTERISTICS

Table of Graphs

			FIGURE
V_{IO}	Input offset voltage	Distribution	6, 7
ΔV_{IO}	Input offset voltage change	vs Time after power on	8, 9
I_{IO}	Input offset current	vs Free-air temperature	10
I_{IB}	Input bias current	vs Free-air temperature	11
		vs Common-mode input voltage	12
I_I	Input current	vs Differential input voltage	13
$V_{O(PP)}$	Maximum peak-to-peak output voltage	vs Frequency	14, 15
V_{OM}	Maximum (positive/negative) peak output voltage	vs Load resistance	16, 17
		vs Free-air temperature	18, 19
A_{VD}	Large-signal differential voltage amplification	vs Supply voltage	20
		vs Load resistance	21
		vs Frequency	22 – 25
		vs Free-air temperature	26
z_o	Output impedance	vs Frequency	27
CMRR	Common-mode rejection ratio	vs Frequency	28
k_{SVR}	Supply-voltage rejection ratio	vs Frequency	29
I_{OS}	Short-circuit output current	vs Supply voltage	30, 31
		vs Elapsed time	32, 33
		vs Free-air temperature	34, 35
I_{CC}	Supply current	vs Supply voltage	36
		vs Free-air temperature	37
	Voltage-follower pulse response	Small signal	38, 40
		Large signal	39, 41
V_n	Equivalent input noise voltage	vs Frequency	42
	Noise voltage (referred to input)	Over 10-second interval	43
B_1	Unity-gain bandwidth	vs Supply voltage	44
		vs Load capacitance	45
	Gain bandwidth product	vs Supply voltage	46
		vs Load capacitance	47
SR	Slew rate	vs Free-air temperature	48, 49
ϕ_m	Phase margin	vs Supply voltage	50, 51
		vs Load capacitance	52, 53
		vs Free-air temperature	54, 55
	Phase shift	vs Frequency	22 – 25

TYPICAL CHARACTERISTICS

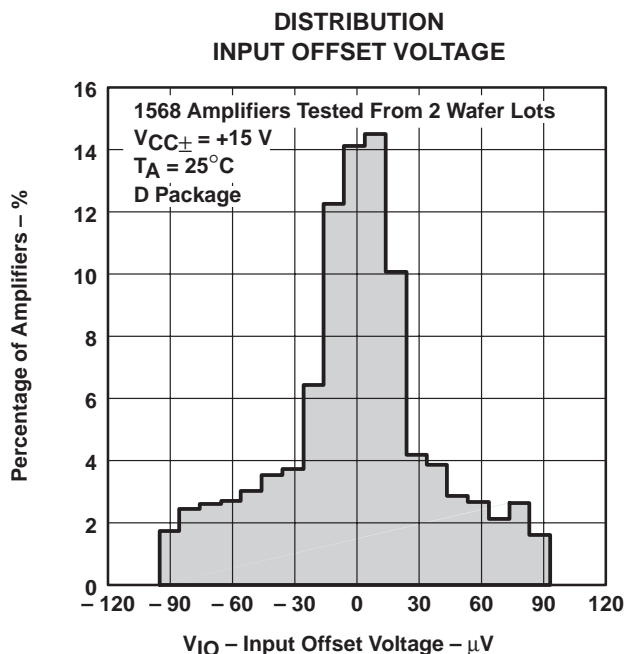


Figure 6

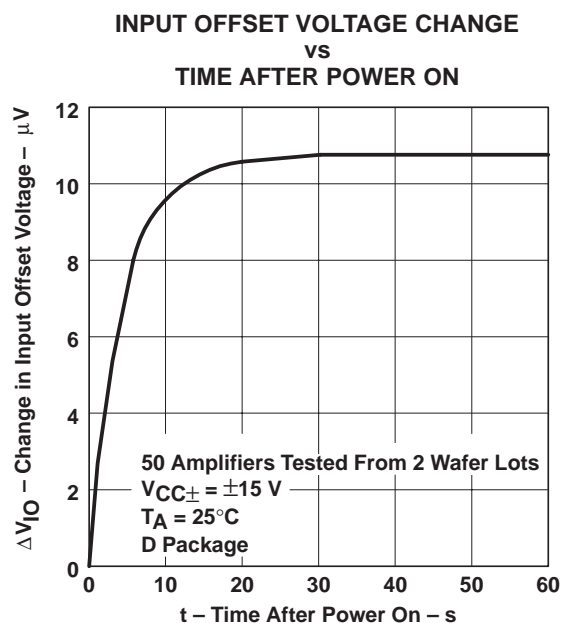


Figure 7

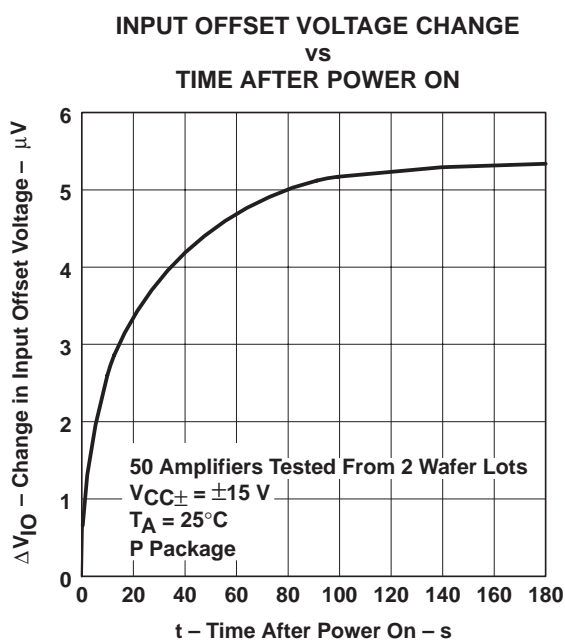


Figure 8

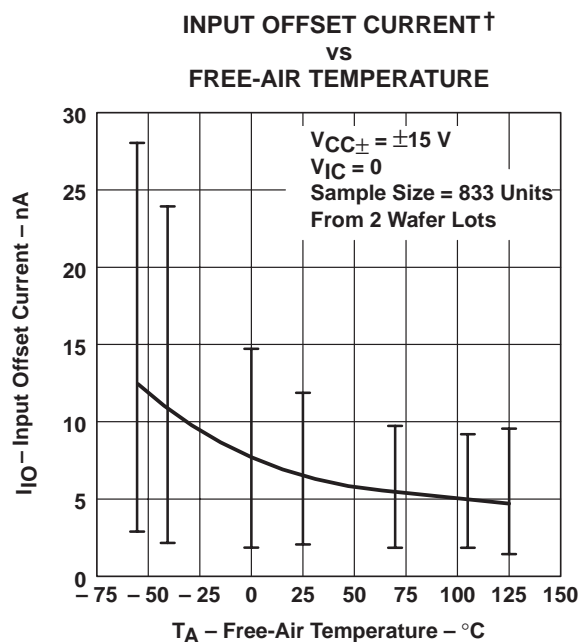
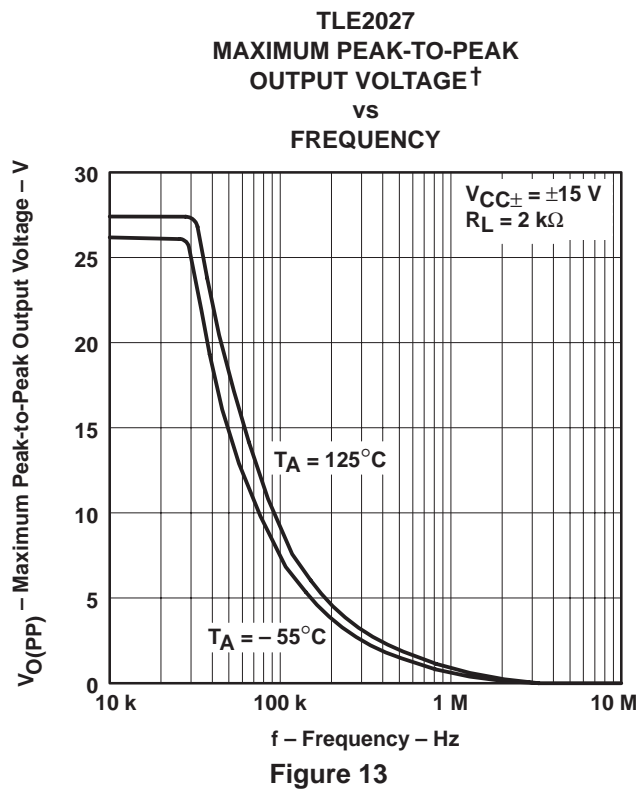
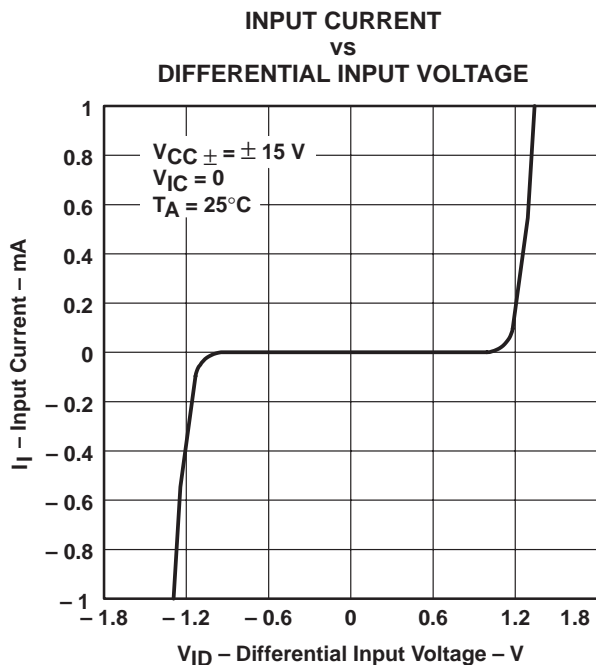
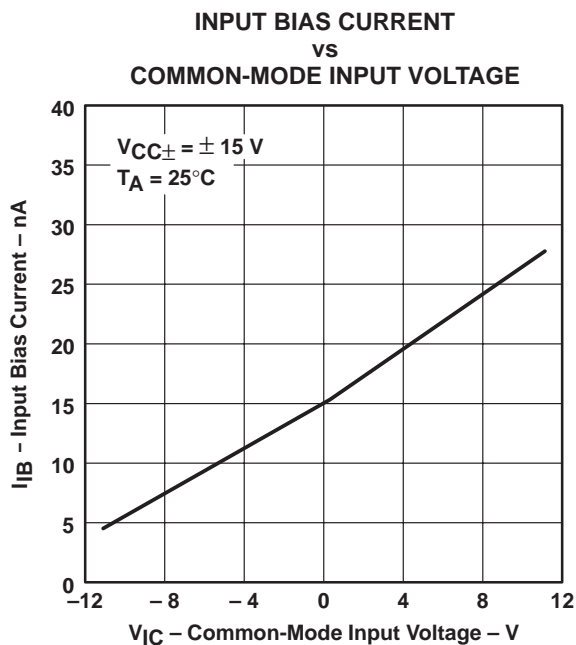
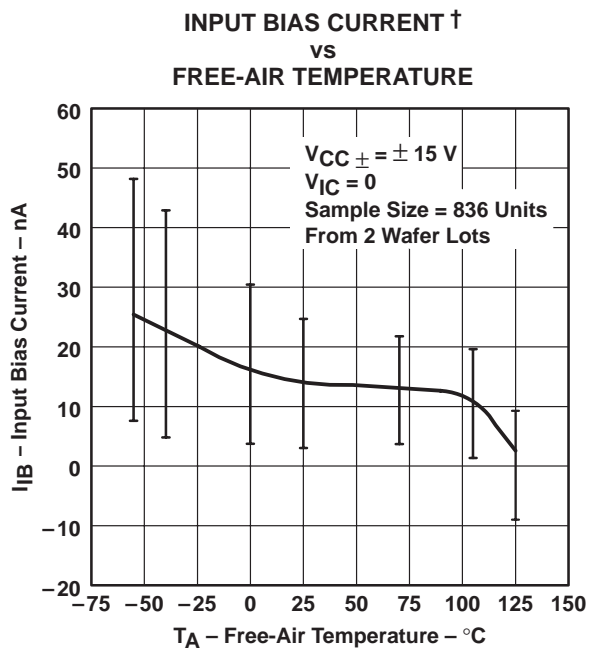


Figure 9

† Data at high and low temperatures are applicable only within the rated operating free-air temperature ranges of the various devices.

TYPICAL CHARACTERISTICS



† Data at high and low temperatures are applicable only within the rated operating free-air temperature ranges of the various devices.

TYPICAL CHARACTERISTICS

TLE2037
**MAXIMUM PEAK-TO-PEAK
 OUTPUT VOLTAGE†**
vs
FREQUENCY

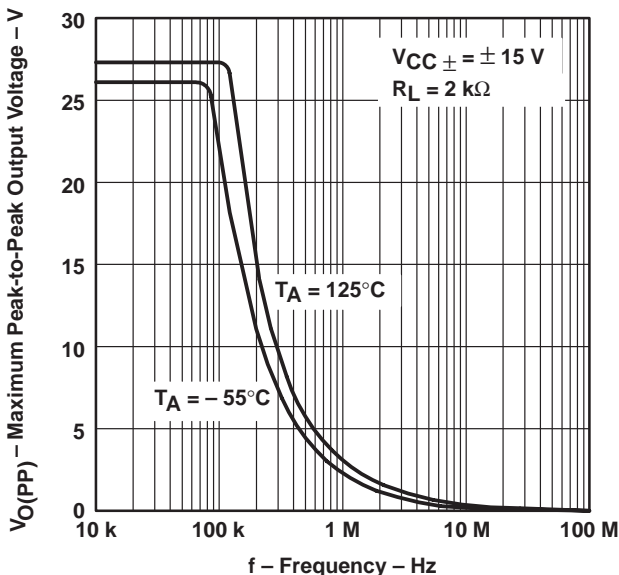


Figure 14

**MAXIMUM POSITIVE PEAK
 OUTPUT VOLTAGE**
vs
LOAD RESISTANCE

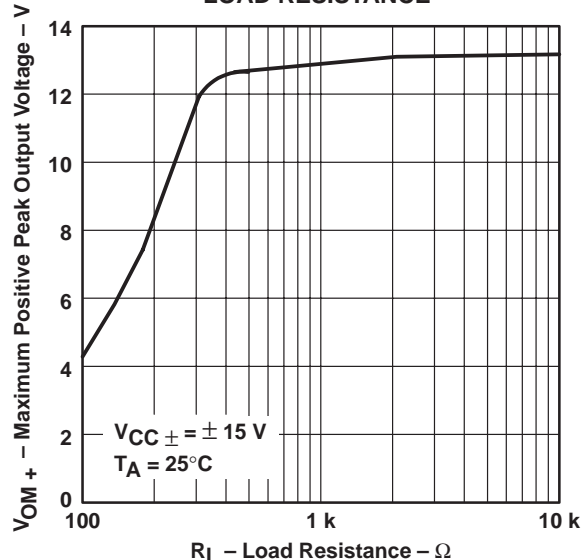


Figure 15

**MAXIMUM NEGATIVE PEAK
 OUTPUT VOLTAGE**
vs
LOAD RESISTANCE

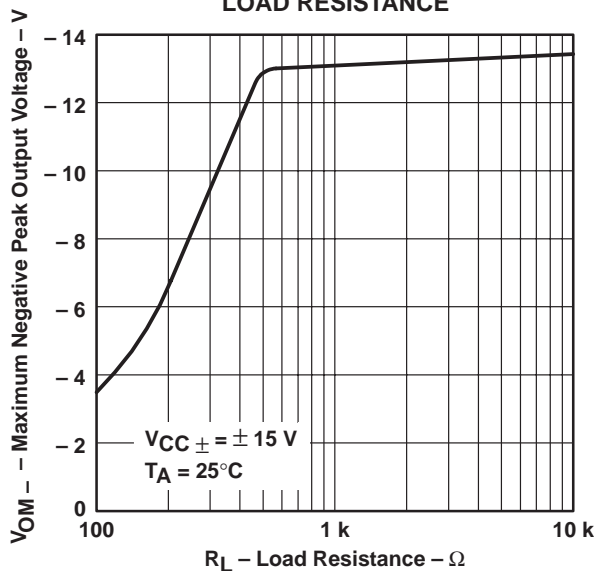


Figure 16

**MAXIMUM POSITIVE PEAK
 OUTPUT VOLTAGE†**
vs
FREE-AIR TEMPERATURE

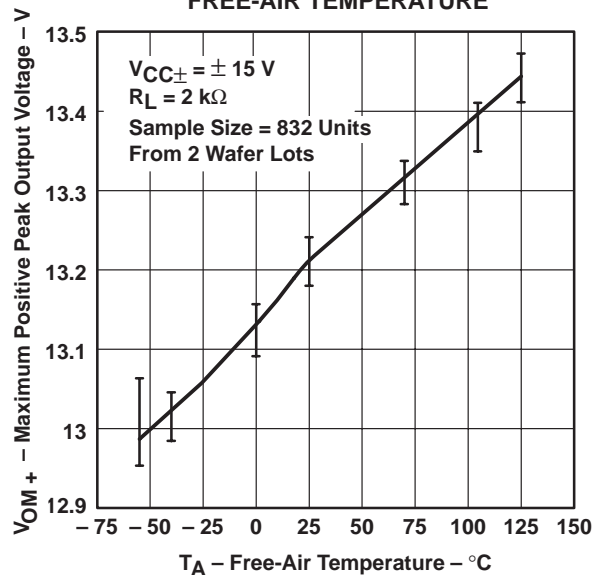


Figure 17

† Data at high and low temperatures are applicable only within the rated operating free-air temperature ranges of the various devices.

TYPICAL CHARACTERISTICS

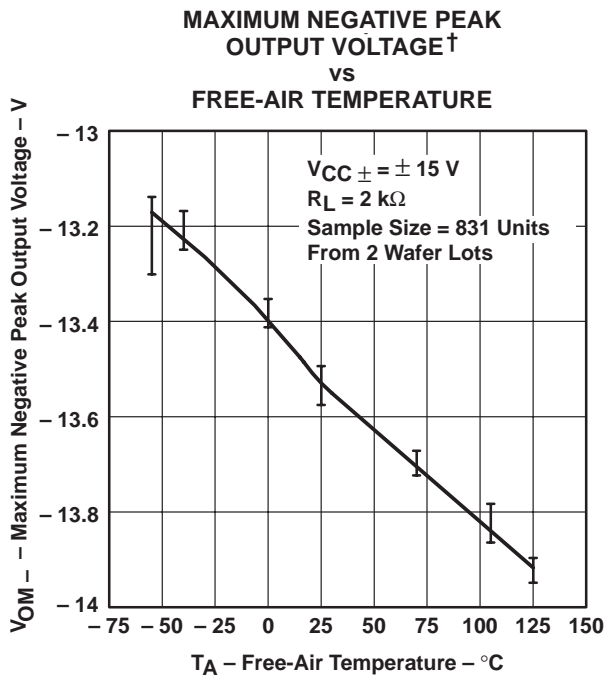


Figure 18

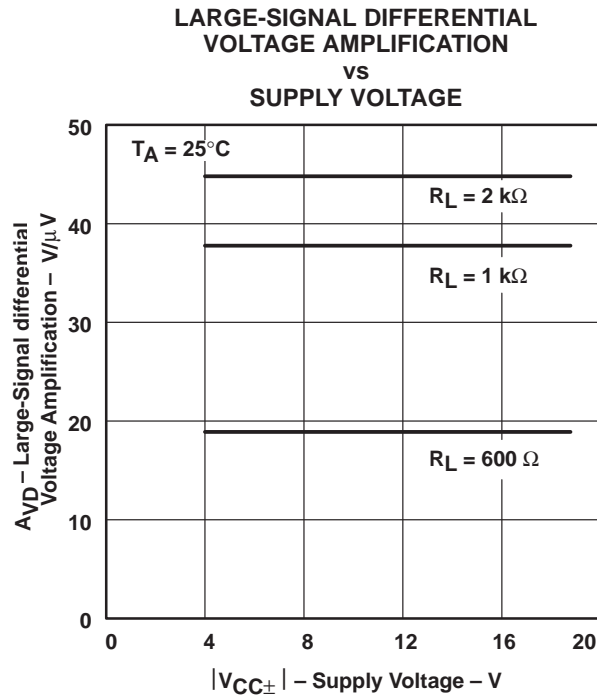


Figure 19

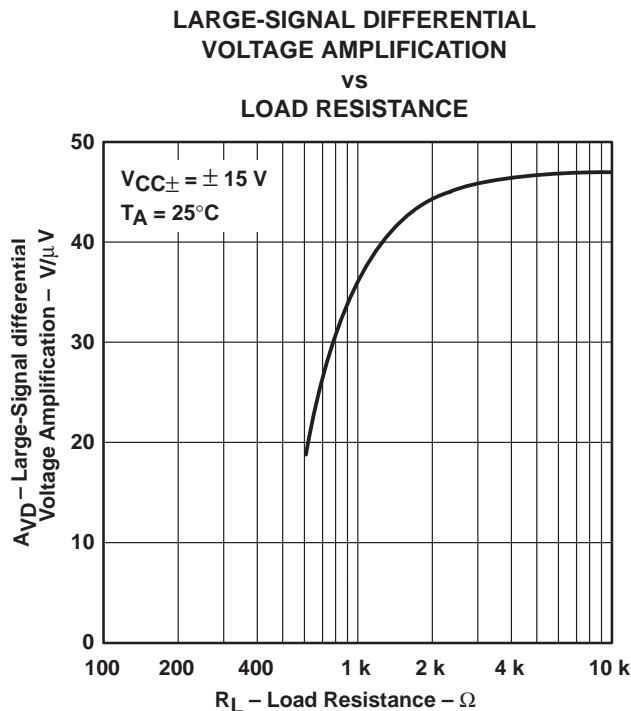


Figure 20

† Data at high and low temperatures are applicable only within the rated operating free-air temperature ranges of the various devices.

TYPICAL CHARACTERISTICS

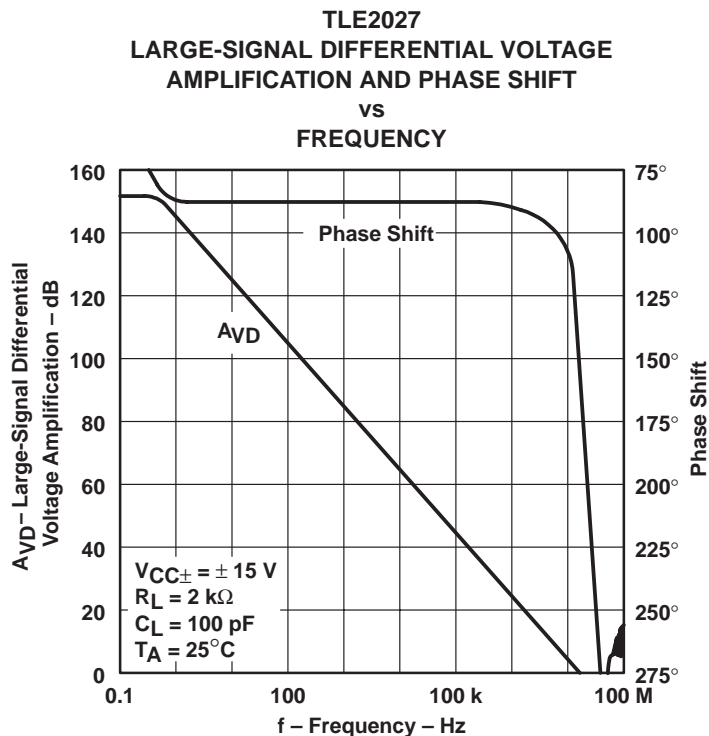


Figure 21

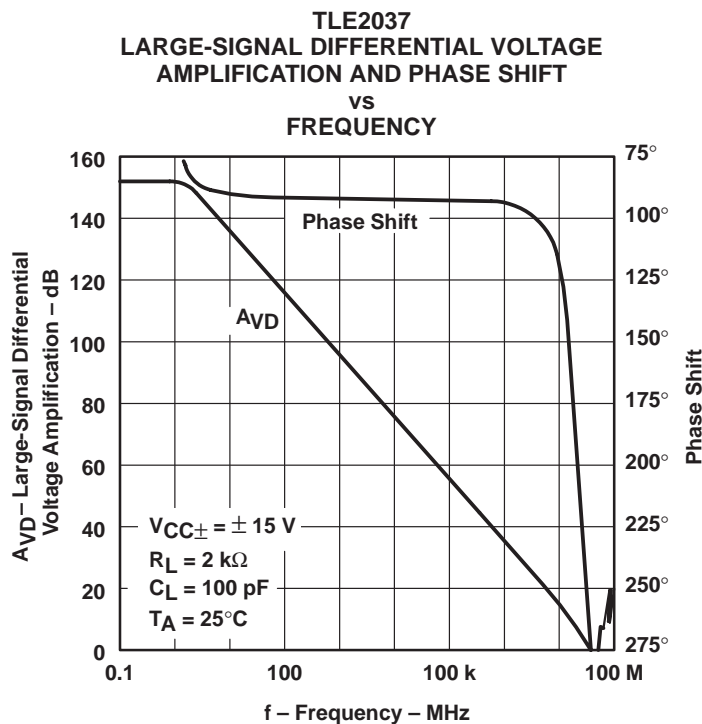


Figure 22

TLE2027, TLE2037, TLE2027A, TLE2037A, TLE2027Y, TLE2037Y EXCALIBUR LOW-NOISE HIGH-SPEED PRECISION OPERATIONAL AMPLIFIERS

SLOS192 – FEBRUARY 1997

TYPICAL CHARACTERISTICS

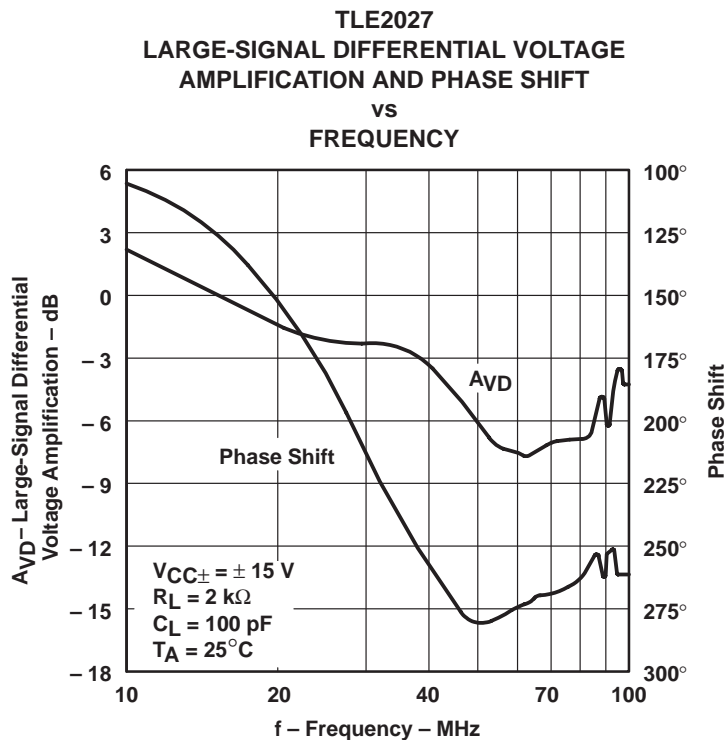


Figure 23

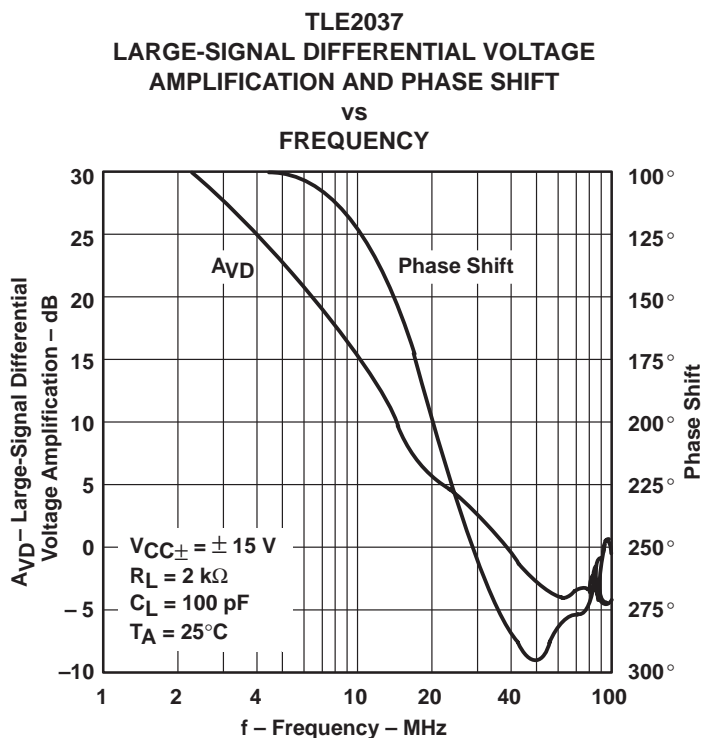


Figure 24



POST OFFICE BOX 655303 • DALLAS, TEXAS 75265

TYPICAL CHARACTERISTICS

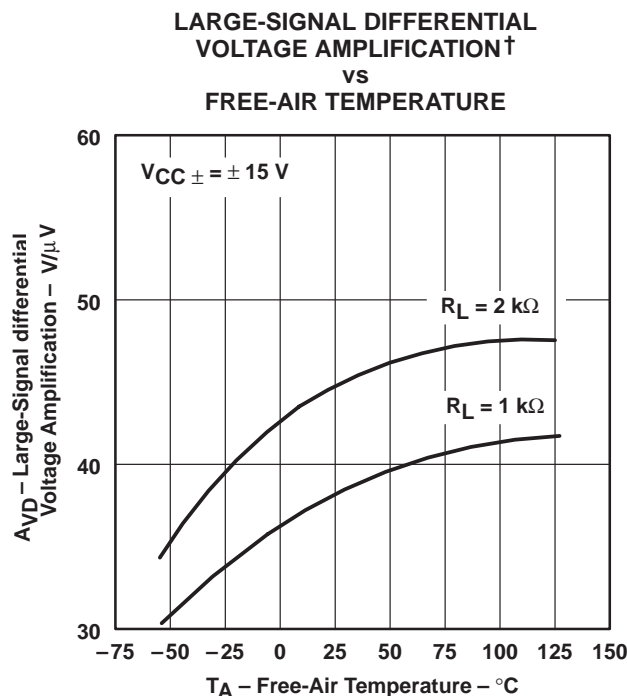
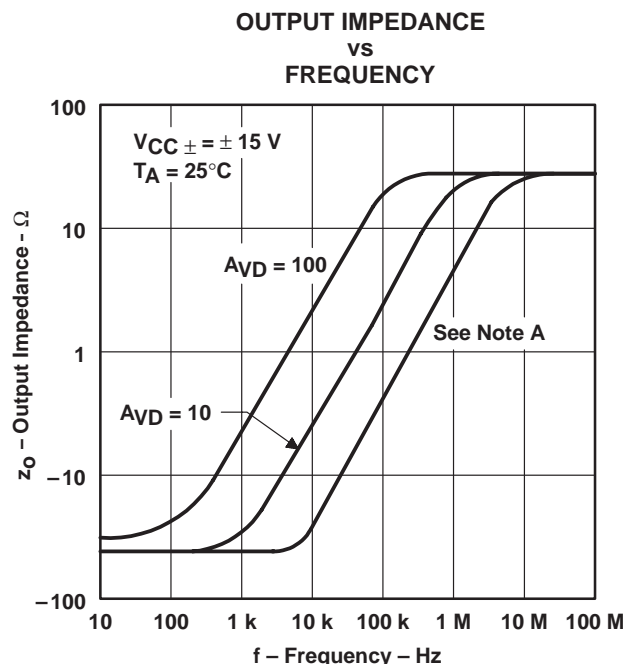


Figure 25



NOTE A: For this curve, the TLE2027 is $A_{VD} = 1$ and the TLE2037 is $A_{VD} = 5$.

Figure 26

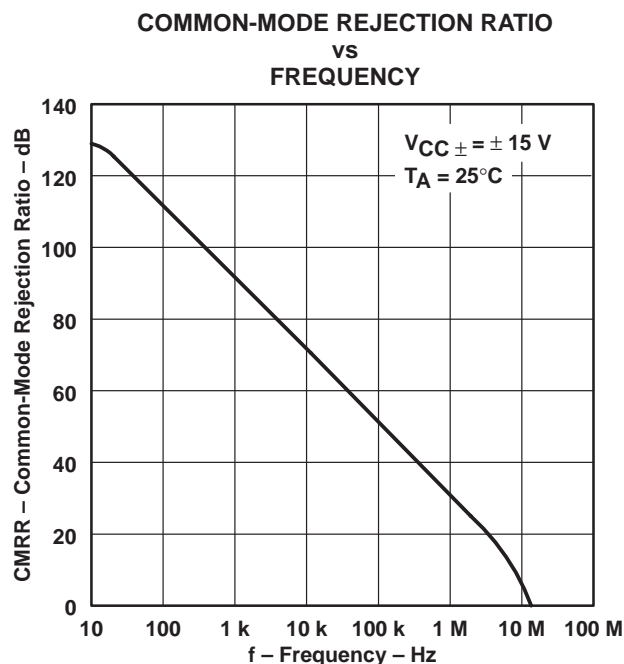


Figure 27

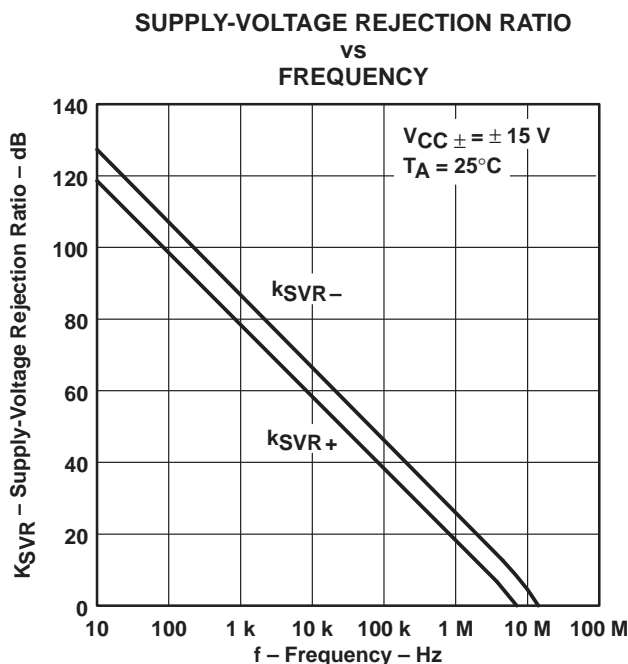


Figure 28

† Data at high and low temperatures are applicable only within the rated operating free-air temperature ranges of the various devices.

TYPICAL CHARACTERISTICS

SHORT-CIRCUIT OUTPUT CURRENT
vs
SUPPLY VOLTAGE

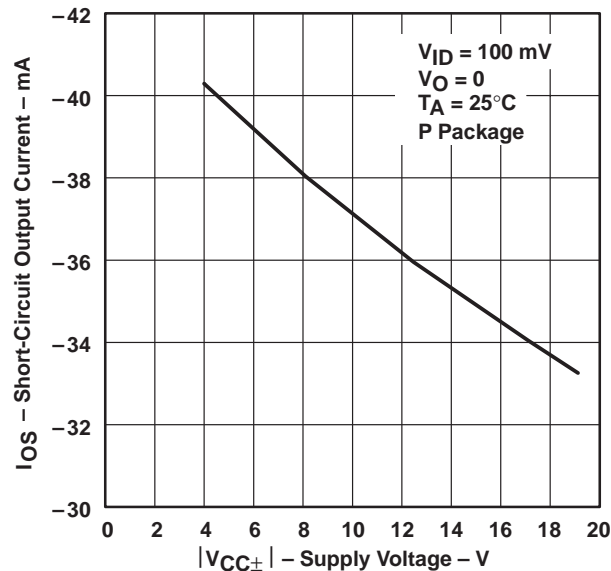


Figure 29

SHORT-CIRCUIT OUTPUT CURRENT
vs
SUPPLY VOLTAGE

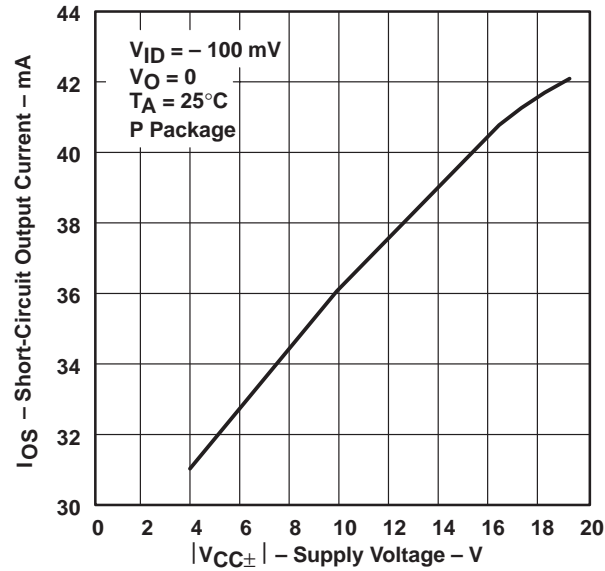


Figure 30

SHORT-CIRCUIT OUTPUT CURRENT
vs
ELAPSED TIME

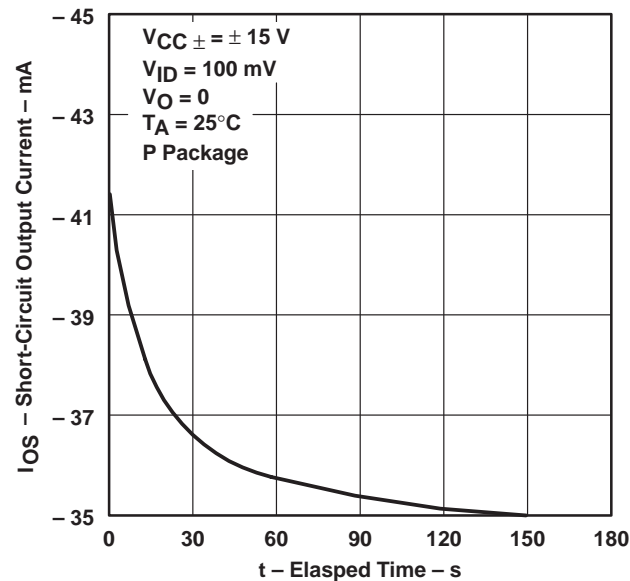


Figure 31

SHORT-CIRCUIT OUTPUT CURRENT
vs
ELAPSED TIME

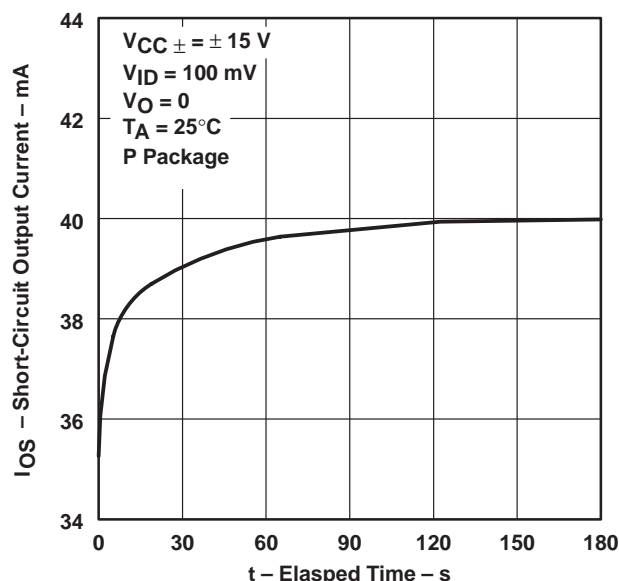


Figure 32

TYPICAL CHARACTERISTICS

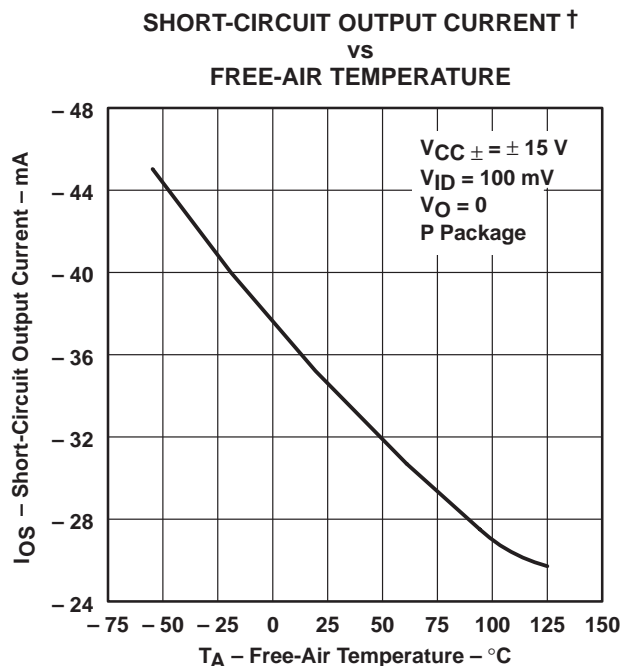


Figure 33

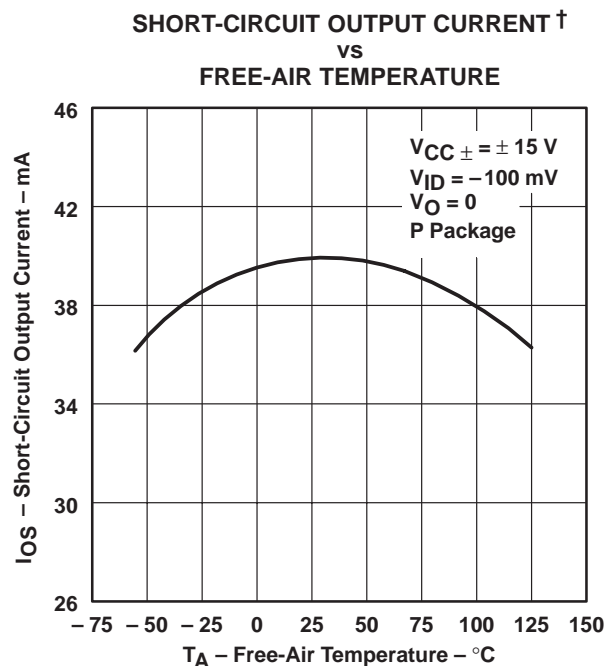


Figure 34

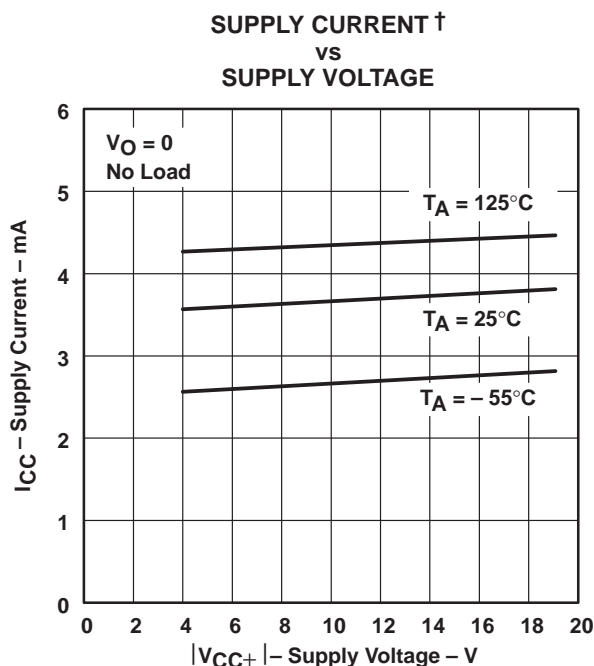


Figure 35

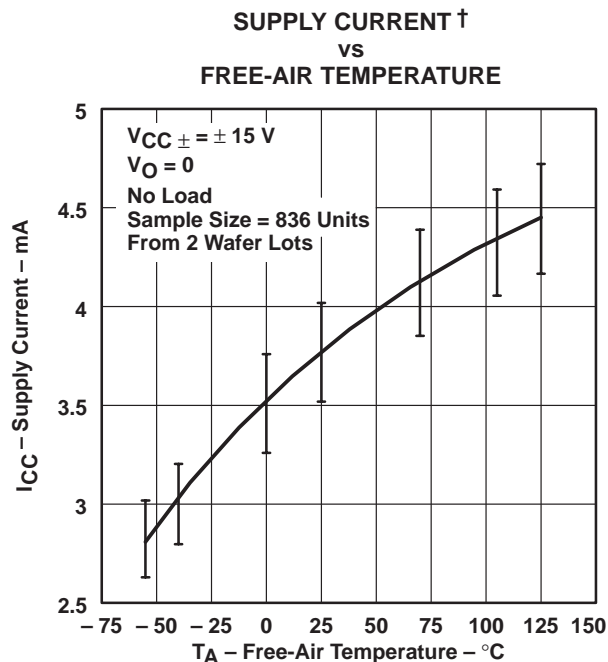


Figure 36

† Data at high and low temperatures are applicable only within the rated operating free-air temperature ranges of the various devices.

TYPICAL CHARACTERISTICS

TLE2027
VOLTAGE-FOLLOWER
SMALL-SIGNAL
PULSE RESPONSE

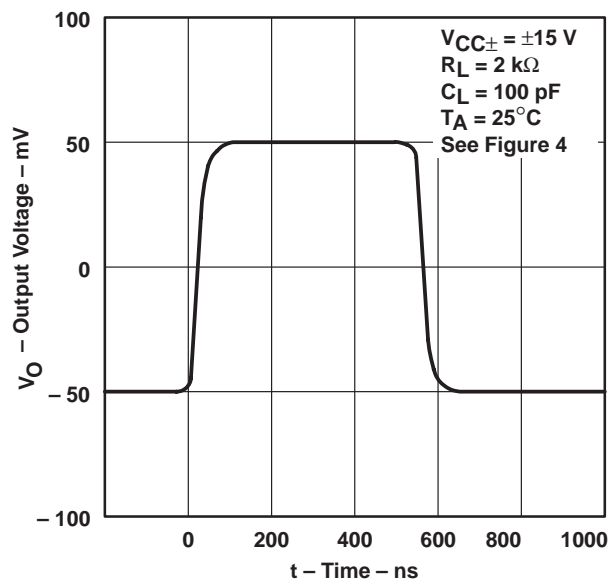


Figure 37

TLE2027
VOLTAGE-FOLLOWER
LARGE-SIGNAL
PULSE RESPONSE

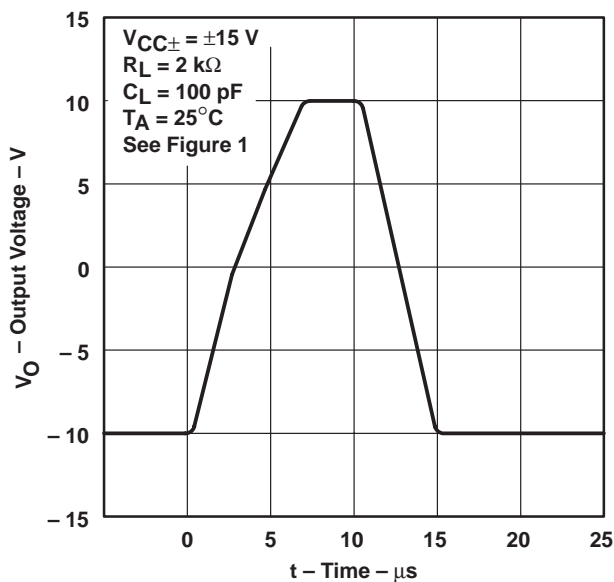


Figure 38

TLE2037
VOLTAGE-FOLLOWER
SMALL-SIGNAL
PULSE RESPONSE

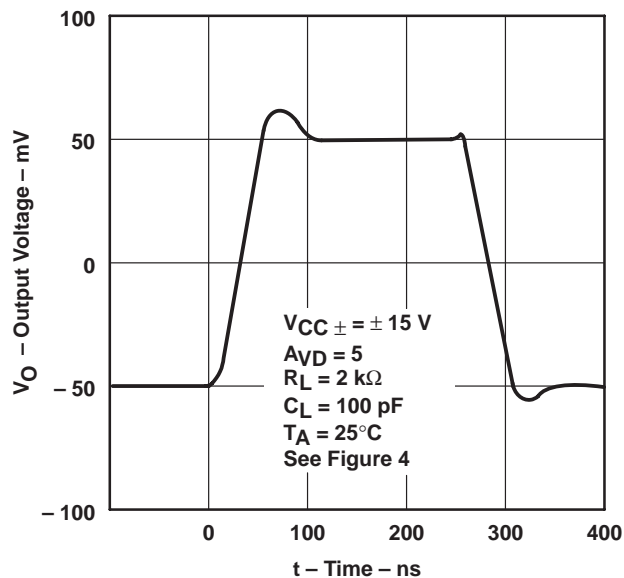


Figure 39

TLE2037
VOLTAGE-FOLLOWER
LARGE-SIGNAL
PULSE RESPONSE

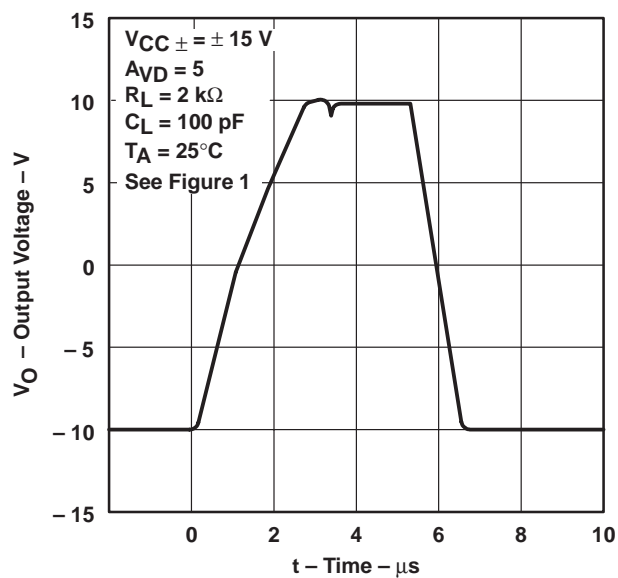


Figure 40

TYPICAL CHARACTERISTICS

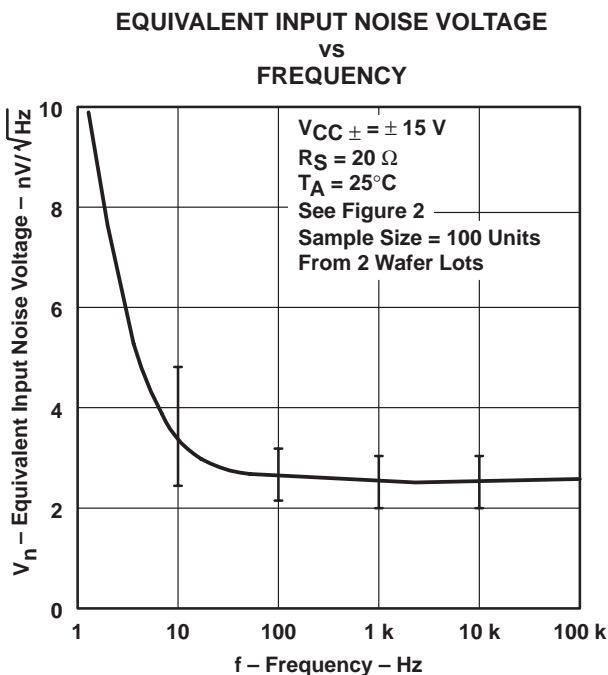


Figure 41

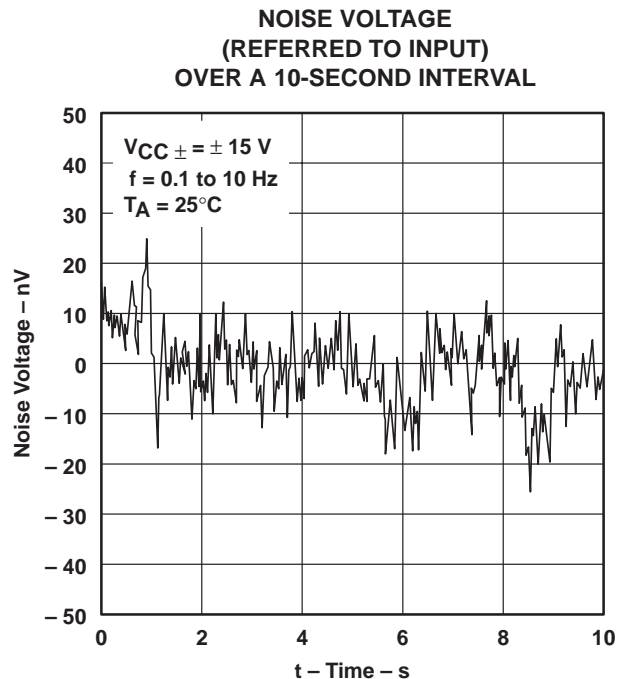


Figure 42

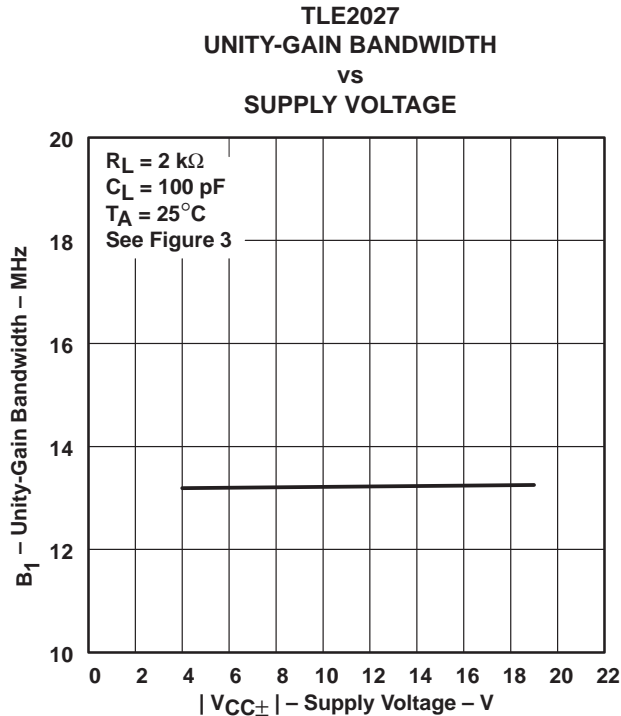


Figure 43

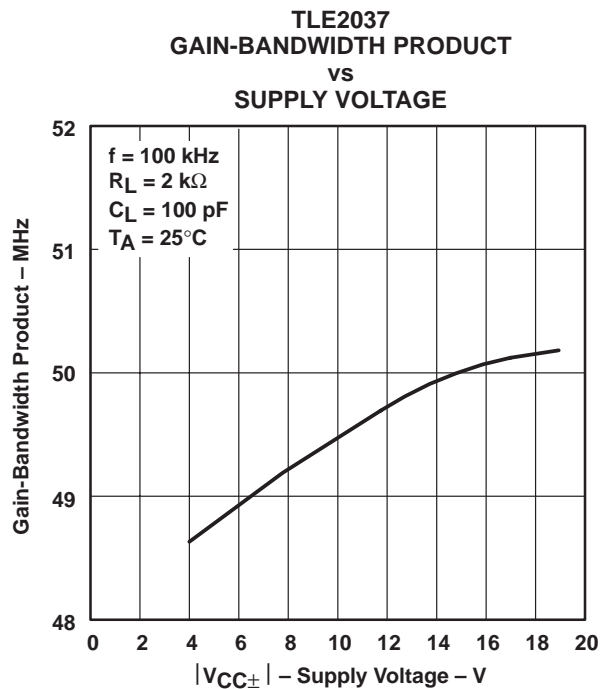


Figure 44

TYPICAL CHARACTERISTICS

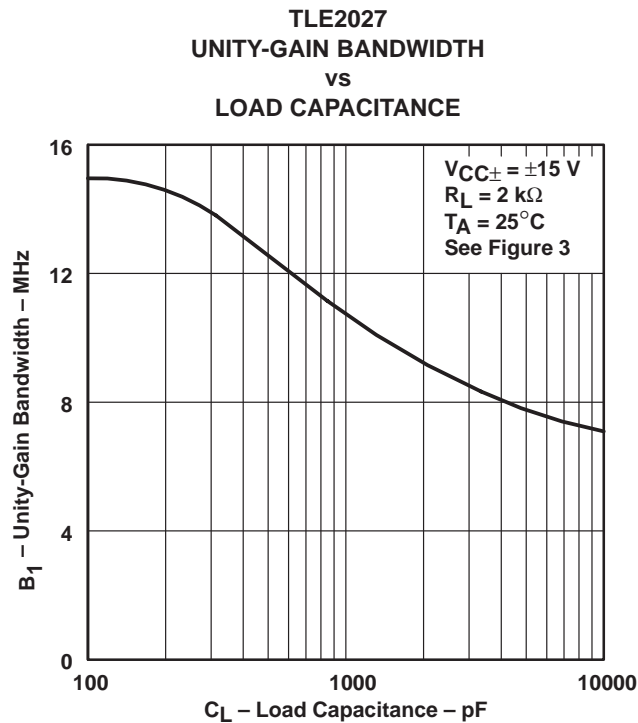


Figure 45

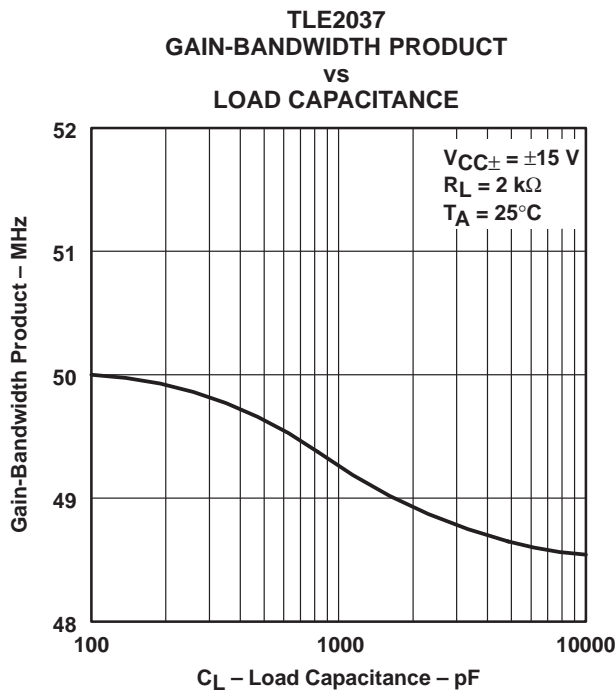


Figure 46

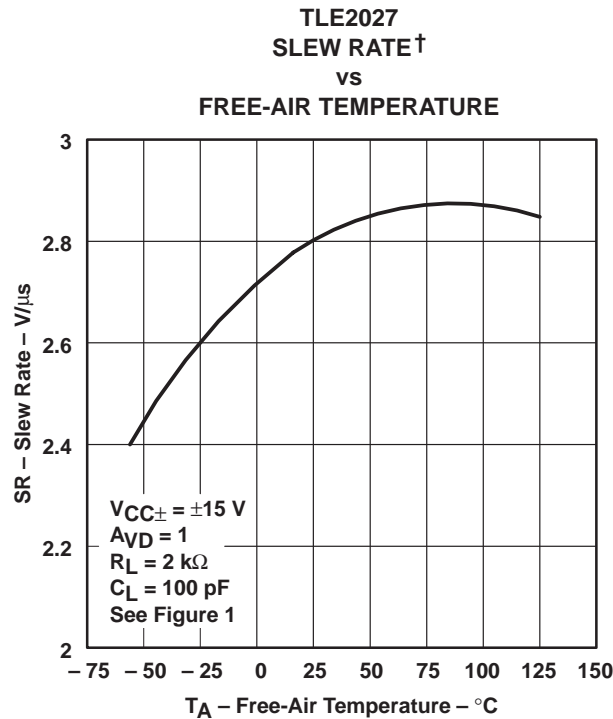


Figure 47

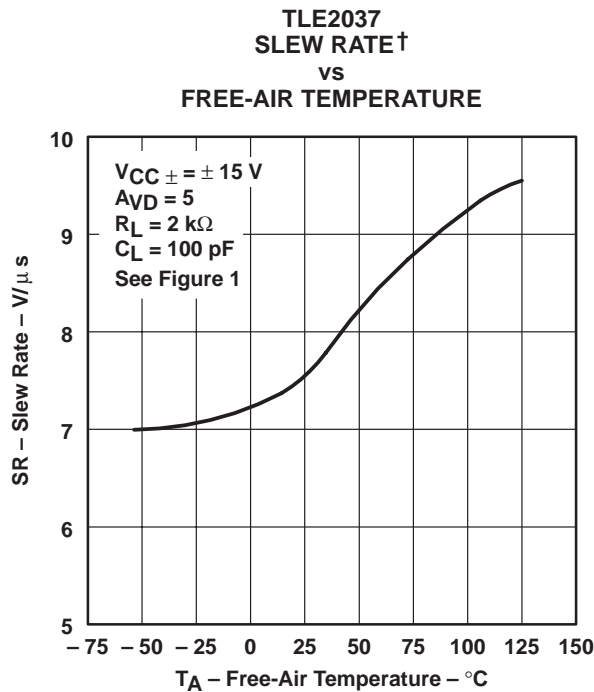


Figure 48

† Data at high and low temperatures are applicable only within the rated operating free-air temperature ranges of the various devices.

TYPICAL CHARACTERISTICS

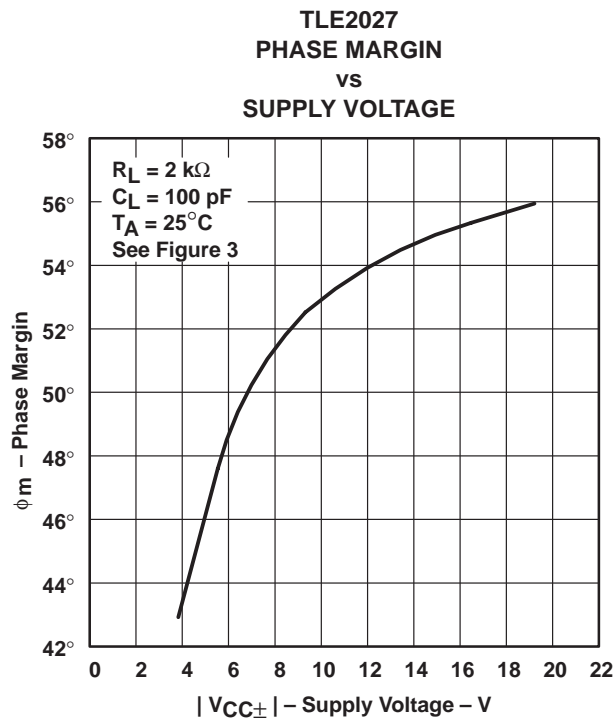


Figure 49

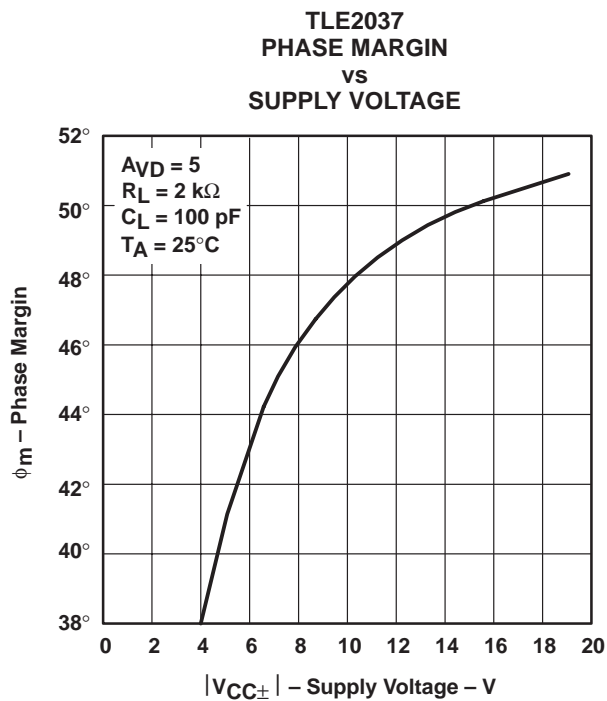


Figure 50

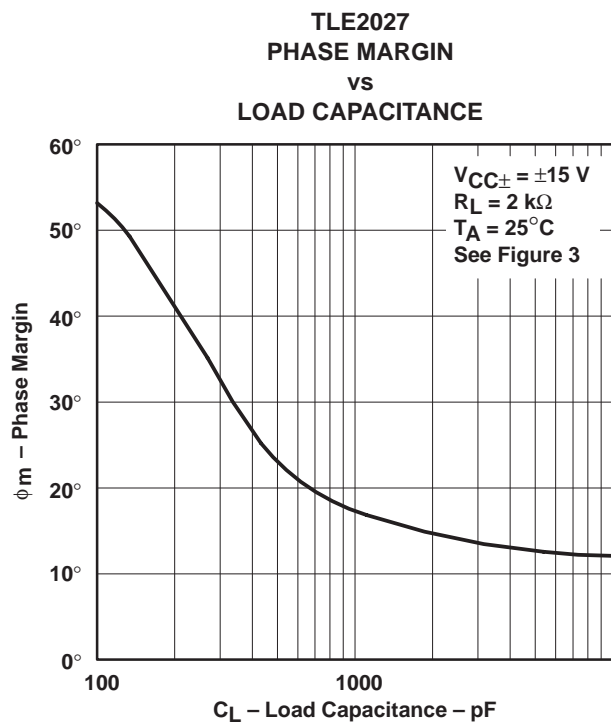


Figure 51

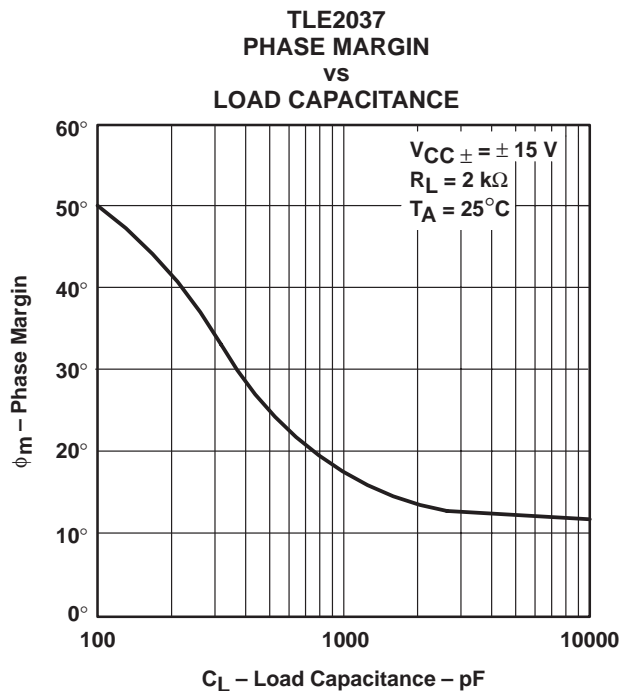


Figure 52

TYPICAL CHARACTERISTICS

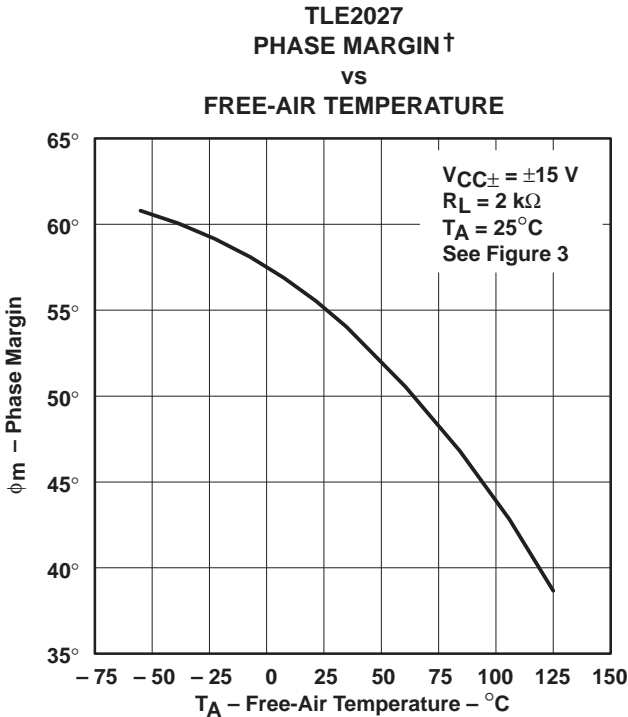


Figure 53

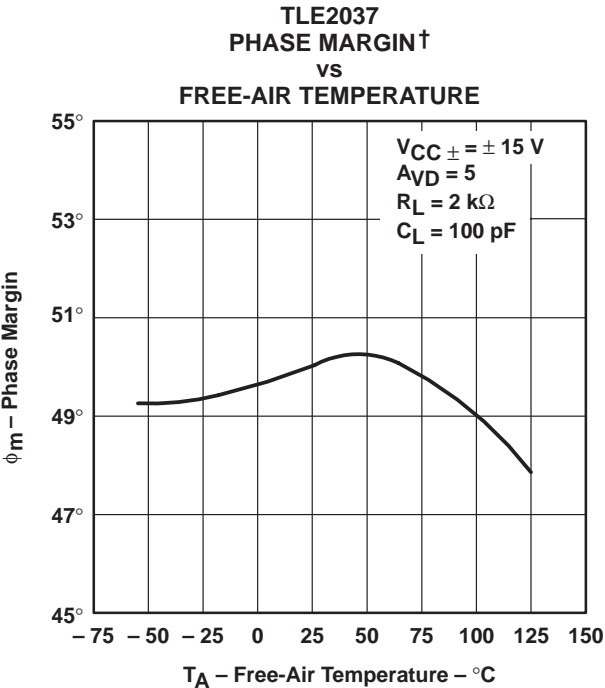


Figure 54

† Data at high and low temperatures are applicable only within the rated operating free-air temperature ranges of the various devices.

APPLICATION INFORMATION

input offset voltage nulling

The TLE2027 and TLE2037 series offers external null pins that can be used to further reduce the input offset voltage. The circuits of Figure 55 can be connected as shown if the feature is desired. If external nulling is not needed, the null pins may be left disconnected.

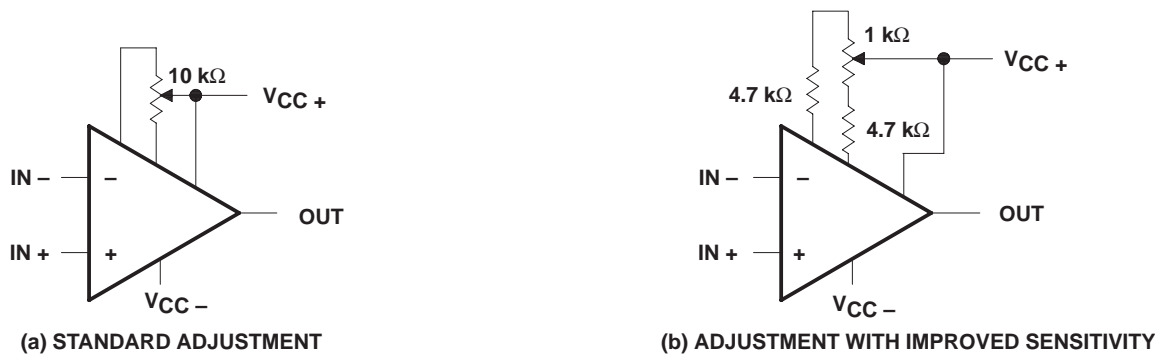


Figure 55. Input Offset Voltage Nulling Circuits

voltage-follower applications

The TLE2027 circuitry includes input-protection diodes to limit the voltage across the input transistors; however, no provision is made in the circuit to limit the current if these diodes are forward biased. This condition can occur when the device is operated in the voltage-follower configuration and driven with a fast, large-signal pulse. It is recommended that a feedback resistor be used to limit the current to a maximum of 1 mA to prevent degradation of the device. Also, this feedback resistor forms a pole with the input capacitance of the device. For feedback resistor values greater than 10 kΩ, this pole degrades the amplifier phase margin. This problem can be alleviated by adding a capacitor (20 pF to 50 pF) in parallel with the feedback resistor (see Figure 56).

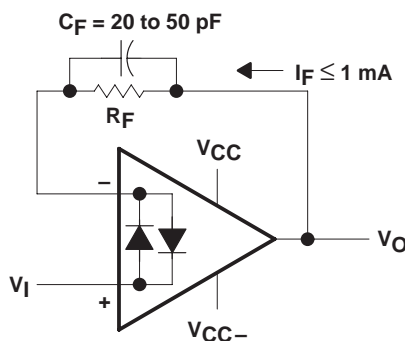


Figure 56. Voltage Follower

APPLICATION INFORMATION

macromodel information

Macromodel information provided was derived using Microsim *Parts*™, the model generation software used with Microsim *PSpice*™. The Boyle macromodel (see Note 6) and subcircuit in Figure 57, Figure 58, and Figure 59 were generated using the TLE20x7 typical electrical and operating characteristics at 25°C. Using this information, output simulations of the following key parameters can be generated to a tolerance of 20% (in most cases):

- Maximum positive output voltage swing
- Maximum negative output voltage swing
- Slew rate
- Quiescent power dissipation
- Input bias current
- Open-loop voltage amplification
- Gain-bandwidth product
- Common-mode rejection ratio
- Phase margin
- DC output resistance
- AC output resistance
- Short-circuit output current limit

NOTE 6: G. R. Boyle, B. M. Cohn, D. O. Pederson, and J. E. Solomon, "Macromodeling of Integrated Circuit Operational Amplifiers", IEEE Journal of Solid-State Circuits, SC-9, 353 (1974).

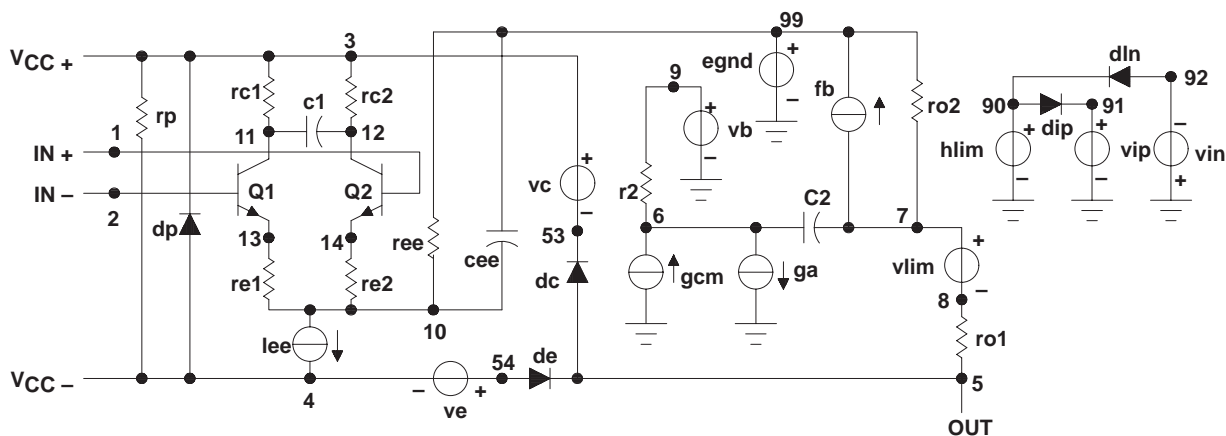


Figure 57. Boyle Macromodel

APPLICATION INFORMATION

macromodel information (continued)

```
.subckt TLE2027 1 2 3 4 5
*
c1      11  12  4.003E-12
c2      6   7   20.00E-12
dc      5   53  dz
de      54  5   dz
dlp     90  91  dz
dln     92  90  dx
dp      4   3   dz
egnd    99  0   poly(2) (3,0)
(4,0) 0 5 .5
fb      7   99  poly(5) vb vc
ve vlp vln 0 954.8E6 -1E9 1E9 1E9
-1E9
ga      6   0   11  12
2.062E-3
gcm     0   6   10  99
531.3E-12
iee     10  4   dc  56.01E-6
hlim    90  0   vlim 1K
ql      11  2   13 qx

q2      12  1   14 qx
r2      6   9   100.0E3
rc1     3   11  530.5
rc2     3   12  530.5
re1     13  10  -393.2
re2     14  10  -393.2
ree     10  99  3.571E6
rol     8   5   25
ro2     7   99  25
rp      3   4   8.013E3
vb      9   0   dc  0
vc      3   53  dc  2.400
ve      54  4   dc  2.100
vlim    7   8   dc  0
vlp     91  0   dc  40
vln     0   92  dc  40
.modeldx D(Is=800.0E-18)
.modelqx NPN(Is=800.0E-18
Bf=7.000E3)
.ends
```

Figure 58. TLE2027 Macromodel Subcircuit

```
.subckt TLE2037 1 2 3 4 5
*
c1      11  12  4.003E-12
c2      6   7   7.500E-12
dc      5   53  dz
de      54  5   dz
dlp     90  91  dz
dln     92  90  dx
dp      4   3   dz
egnd    99  0   poly(2) (3,0)
(4,0) 0 .5 .5
fb      7   99  poly(5) vb vc
ve vip vln 0 923.4E6 A800E6
800E6 800E6 A800E6
ga      6   0   11  12 2.121E-3
gcm     0   6   10  99 597.7E-12
iee     10  4   dc  56.26E-6
hlim    90  0   vlim 1K
ql      11  2   13 qx

q2      12  1   14 qx
r2      6   9   100.0E3
rc1     3   11  471.5
rc2     3   12  471.5
re1     13  10  A448
re2     14  10  A448
ree     10  99  3.555E6
rol     8   5   25
ro2     7   99  25
rp      3   4   8.013E3
vb      9   0   dc  0
vc      3   53  dc  2.400
ve      54  4   dc  2.100
vlim    7   8   dc  0
vlp     91  0   dc  40
vln     0   92  dc  40
.model  dxD(Is=800.0E-18)
.model  qxNPN(Is=800.0E-18
Bf=7.031E3)
.ends
```

Figure 59. TLE2037 Macromodel Subcircuit

IMPORTANT NOTICE

Texas Instruments and its subsidiaries (TI) reserve the right to make changes to their products or to discontinue any product or service without notice, and advise customers to obtain the latest version of relevant information to verify, before placing orders, that information being relied on is current and complete. All products are sold subject to the terms and conditions of sale supplied at the time of order acknowledgement, including those pertaining to warranty, patent infringement, and limitation of liability.

TI warrants performance of its semiconductor products to the specifications applicable at the time of sale in accordance with TI's standard warranty. Testing and other quality control techniques are utilized to the extent TI deems necessary to support this warranty. Specific testing of all parameters of each device is not necessarily performed, except those mandated by government requirements.

CERTAIN APPLICATIONS USING SEMICONDUCTOR PRODUCTS MAY INVOLVE POTENTIAL RISKS OF DEATH, PERSONAL INJURY, OR SEVERE PROPERTY OR ENVIRONMENTAL DAMAGE ("CRITICAL APPLICATIONS"). TI SEMICONDUCTOR PRODUCTS ARE NOT DESIGNED, AUTHORIZED, OR WARRANTED TO BE SUITABLE FOR USE IN LIFE-SUPPORT DEVICES OR SYSTEMS OR OTHER CRITICAL APPLICATIONS. INCLUSION OF TI PRODUCTS IN SUCH APPLICATIONS IS UNDERSTOOD TO BE FULLY AT THE CUSTOMER'S RISK.

In order to minimize risks associated with the customer's applications, adequate design and operating safeguards must be provided by the customer to minimize inherent or procedural hazards.

TI assumes no liability for applications assistance or customer product design. TI does not warrant or represent that any license, either express or implied, is granted under any patent right, copyright, mask work right, or other intellectual property right of TI covering or relating to any combination, machine, or process in which such semiconductor products or services might be or are used. TI's publication of information regarding any third party's products or services does not constitute TI's approval, warranty or endorsement thereof.