

LM129/LM329 Precision Reference

General Description

The LM129 and LM329 family are precision multi-current temperature-compensated 6.9V zener references with dynamic impedances a factor of 10 to 100 less than discrete diodes. Constructed in a single silicon chip, the LM129 uses active circuitry to buffer the internal zener allowing the device to operate over a 0.5 mA to 15 mA range with virtually no change in performance. The LM129 and LM329 are available with selected temperature coefficients of 0.001, 0.002, 0.005 and 0.01%/°C. These references also have excellent long term stability and low noise.

A new subsurface breakdown zener used in the LM129 gives lower noise and better long-term stability than conventional IC zeners. Further the zener and temperature compensating transistor are made by a planar process so they are immune to problems that plague ordinary zeners. For example, there is virtually no voltage shift in zener voltage due to temperature cycling and the device is insensitive to stress on the leads.

The LM129 can be used in place of conventional zeners with improved performance. The low dynamic impedance simplifies biasing and the wide operating current allows the replacement of many zener types.

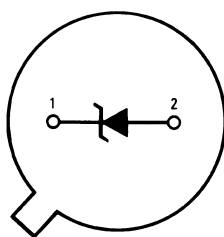
The LM129 is packaged in a 2-lead TO-46 package and is rated for operation over a -55°C to +125°C temperature range. The LM329 for operation over 0°C to 70°C is available in both a hermetic TO-46 package and a TO-92 epoxy package.

Features

- 0.6 mA to 15 mA operating current
- 0.6Ω dynamic impedance at any current
- Available with temperature coefficients of 0.001%/°C
- 7μV wideband noise
- 5% initial tolerance
- 0.002% long term stability
- Low cost
- Subsurface zener

Connection Diagrams

Metal Can Package (TO-46)

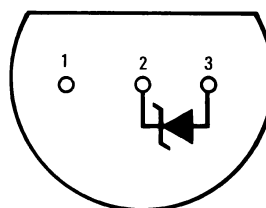


Pin 2 is electrically connected to case

Bottom View

**Order Number LM129AH, LM129AH/883, LM129BH,
LM129BH/883, LM129CH, LM329AH, LM329BH,
LM329CH or LM329DH
See NS Package H02A**

Plastic Package (TO-92)



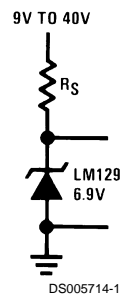
DS005714-4

Bottom View

**Order Number LM329BZ,
LM329CZ or LM329DZ
See NS Package Z03A**

Typical Applications

Simple Reference



Absolute Maximum Ratings (Note 1)

If Military/Aerospace specified devices are required, please contact the National Semiconductor Sales Office/Distributors for availability and specifications.

(Note 3)

| | |
|---------------------------|-------|
| Reverse Breakdown Current | 30 mA |
| Forward Current | 2 mA |

Operating Temperature Range

LM129

–55°C to +125°C

LM329

0°C to +70°C

Storage Temperature Range

–55°C to +150°C

Soldering Information

TO-92 package: 10 sec.

260°C

TO-46 package: 10 sec.

300°C

Electrical Characteristics (Note 2)

| Parameter | Conditions | LM129A, B, C | | | LM329A, B, C, D | | | Units |
|---|---|--------------|-----|-----|-----------------|-----|------|---------------|
| | | Min | Typ | Max | Min | Typ | Max | |
| Reverse Breakdown Voltage | $T_A = 25^\circ\text{C}$, $0.6\text{ mA} \leq I_R \leq 15\text{ mA}$ | 6.7 | 6.9 | 7.2 | 6.6 | 6.9 | 7.25 | V |
| Reverse Breakdown Change with Current (Note 4) | $T_A = 25^\circ\text{C}$, $0.6\text{ mA} \leq I_R \leq 15\text{ mA}$ | | 9 | 14 | | 9 | 20 | mV |
| Reverse Dynamic Impedance (Note 4) | $T_A = 25^\circ\text{C}$, $I_R = 1\text{ mA}$ | | 0.6 | 1 | | 0.8 | 2 | Ω |
| RMS Noise | $T_A = 25^\circ\text{C}$, $10\text{ Hz} \leq F \leq 10\text{ kHz}$ | | 7 | 20 | | 7 | 100 | μV |
| Long Term Stability (1000 hours) | $T_A = 45^\circ\text{C} \pm 0.1^\circ\text{C}$, $I_R = 1\text{ mA} \pm 0.3\%$ | | 20 | | | 20 | | ppm |
| Temperature Coefficient LM129A, LM329A | $I_R = 1\text{ mA}$ | | 6 | 10 | | 6 | 10 | ppm/°C |
| LM129B, LM329B | | | 15 | 20 | | 15 | 20 | ppm/°C |
| LM129C, LM329C | | | 30 | 50 | | 30 | 50 | ppm/°C |
| LM329D | | | | | | 50 | 100 | ppm/°C |
| Change In Reverse Breakdown Temperature Coefficient | $1\text{ mA} \leq I_R \leq 15\text{ mA}$ | | 1 | | | 1 | | ppm/°C |
| Reverse Breakdown Change with Current | $1\text{ mA} \leq I_R \leq 15\text{ mA}$ | | 12 | | | 12 | | mV |
| Reverse Dynamic Impedance | $1\text{ mA} \leq I_R \leq 15\text{ mA}$ | | 0.8 | | | 1 | | Ω |

Note 1: "Absolute Maximum Ratings" indicate limits beyond which damage to the device may occur. Operating Ratings indicate conditions for which the device is functional, but do not guarantee specific performance limits.

Note 2: These specifications apply for $-55^\circ\text{C} \leq T_A \leq +125^\circ\text{C}$ for the LM129 and $0^\circ\text{C} \leq T_A \leq +70^\circ\text{C}$ for the LM329 unless otherwise specified. The maximum junction temperature for an LM129 is 150°C and LM329 is 100°C . For operating at elevated temperature, devices in TO-46 package must be derated based on a thermal resistance of 440°C/W junction to ambient or 80°C/W junction to case. For the TO-92 package, the derating is based on 180°C/W junction to ambient with 0.4" leads from a PC board and 160°C/W junction to ambient with 0.125" lead length to a PC board.

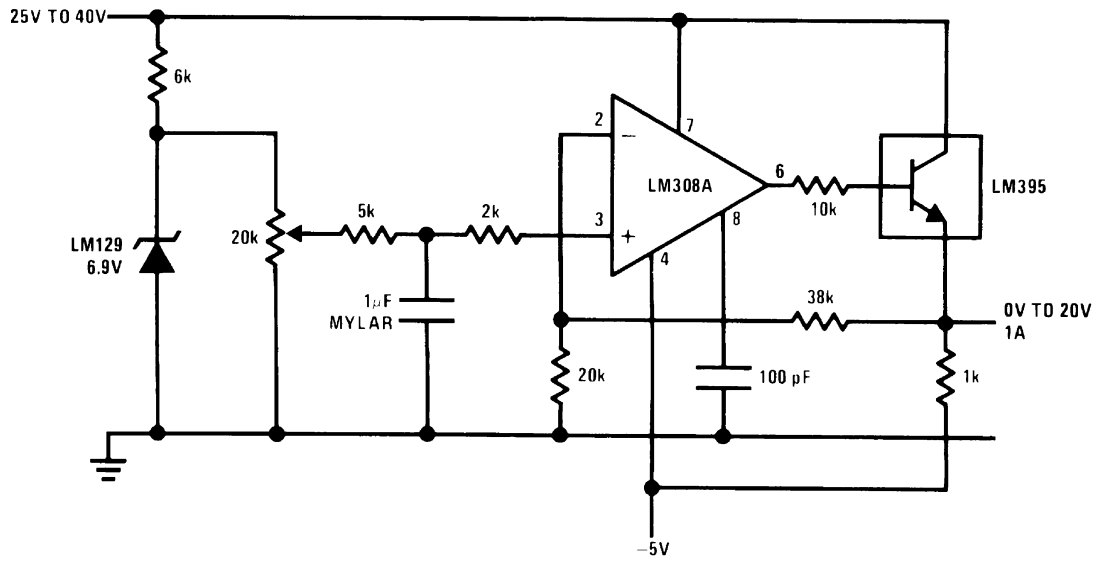
Note 3: Refer to RETS129H for LM129 family military specifications.

Note 4: These changes are tested on a pulsed basis with a low duty-cycle. For changes versus temperature, compute in terms of tempco.

The circuit diagram shows a precision current source. The LM317 is configured as a voltage follower with its IN pin connected to a 35V source, its OUT pin connected to its ADJ pin, and its ADJ pin connected to a 240Ω resistor. The other end of this resistor is connected to a 5kΩ potentiometer. The wiper of the potentiometer is connected to the ADJ pin. The LM329 is connected with its cathode to ground, its anode to a 240Ω resistor, and its other terminal to a 570Ω resistor. The other end of the 570Ω resistor is connected to a 150Ω resistor, which is then connected to a -10V source. The output voltage V_{OUT} is taken from the OUT pin of the LM317.

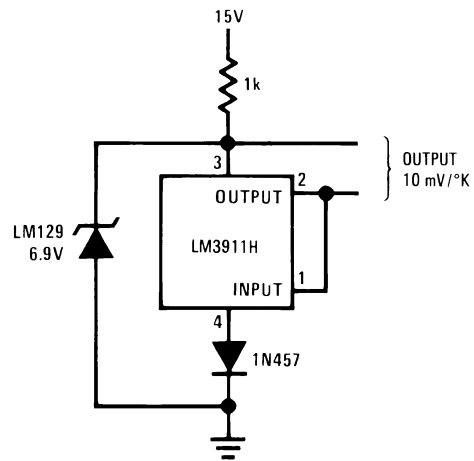
4

0V to 20V Power Reference



DS005714-9

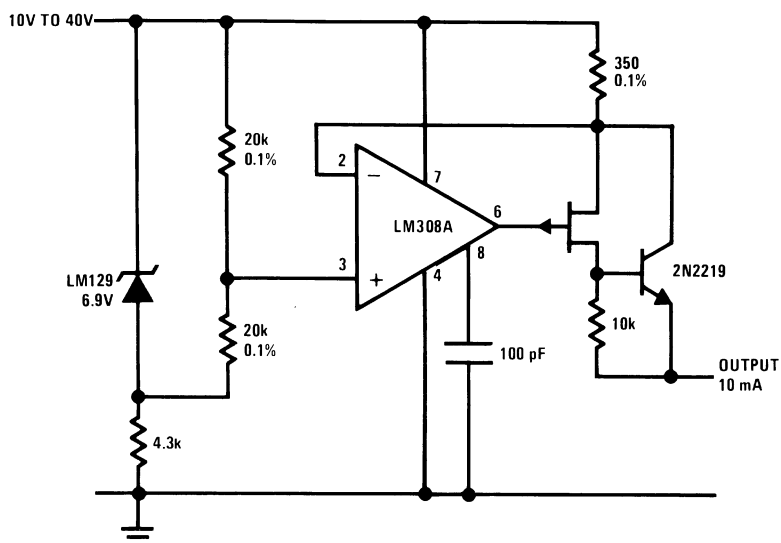
External Reference for Temperature Transducer



DS005714-2

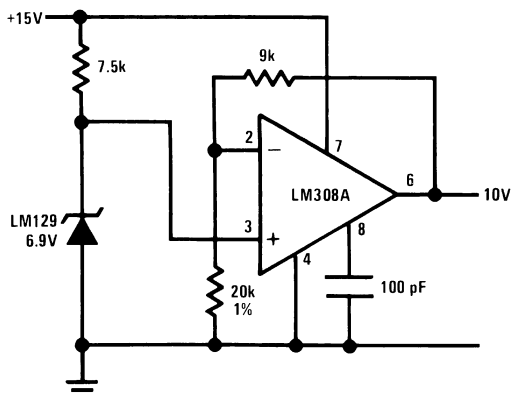
Typical Applications (Continued)

Positive Current Source



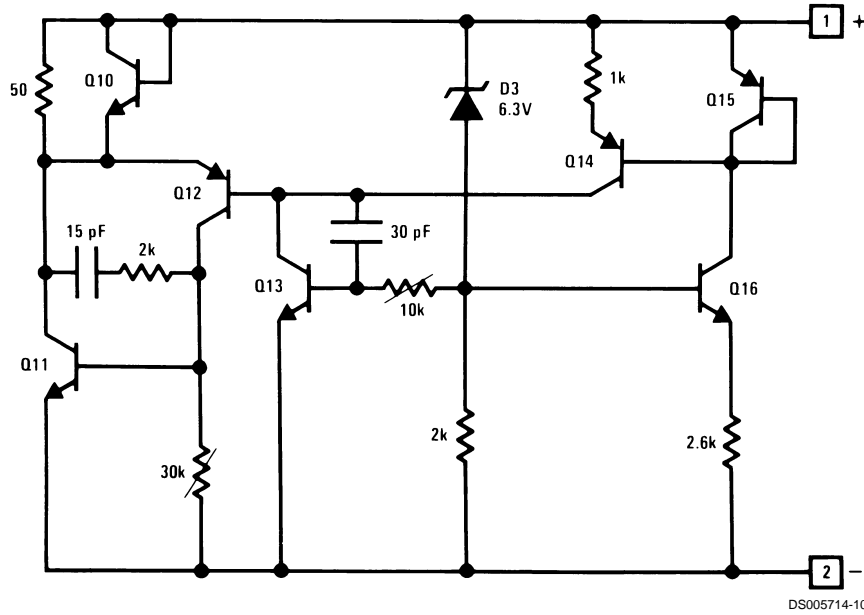
DS005714-11

Buffered Reference with Single Supply



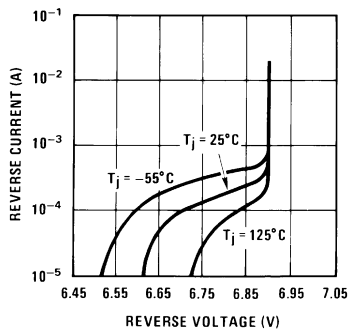
DS005714-3

Schematic Diagram

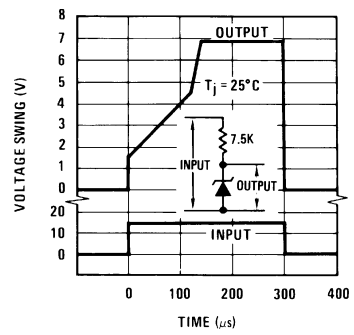


Typical Performance Characteristics

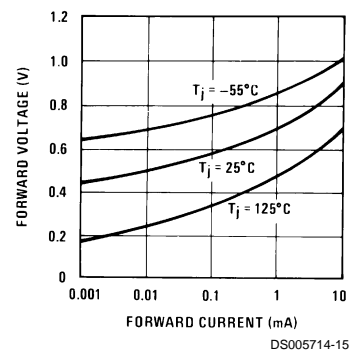
Reverse Characteristics



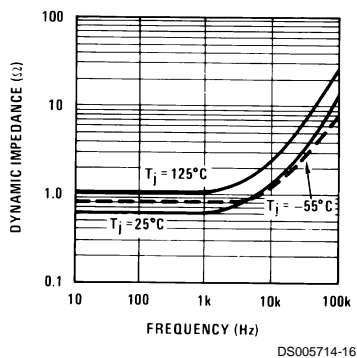
Response Time



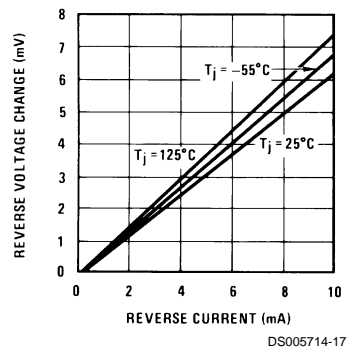
Forward Characteristics



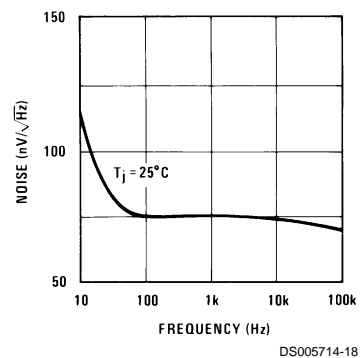
Dynamic Impedance



Reverse Voltage Change

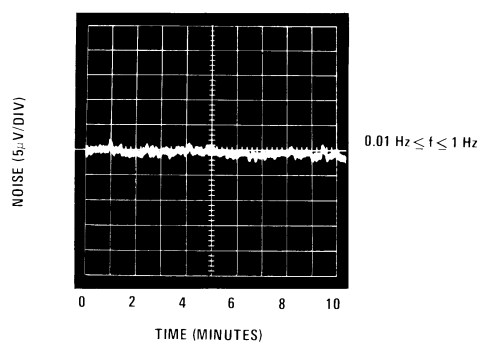


Zener Noise Voltage



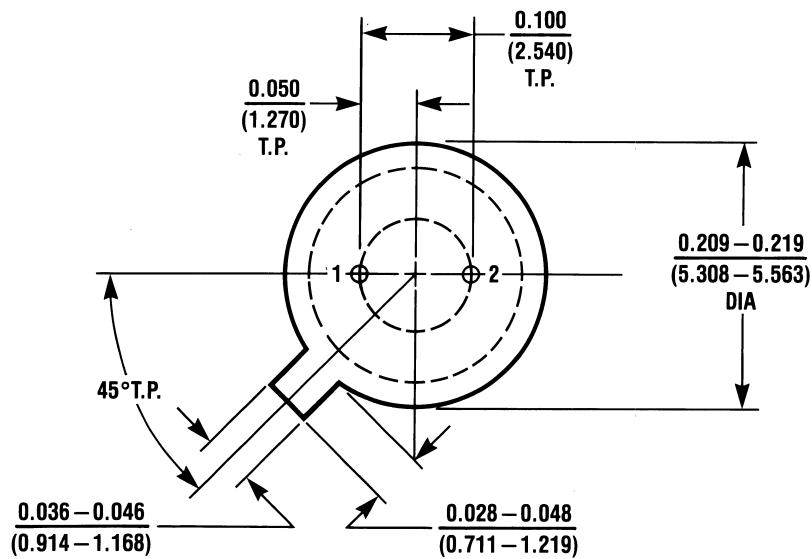
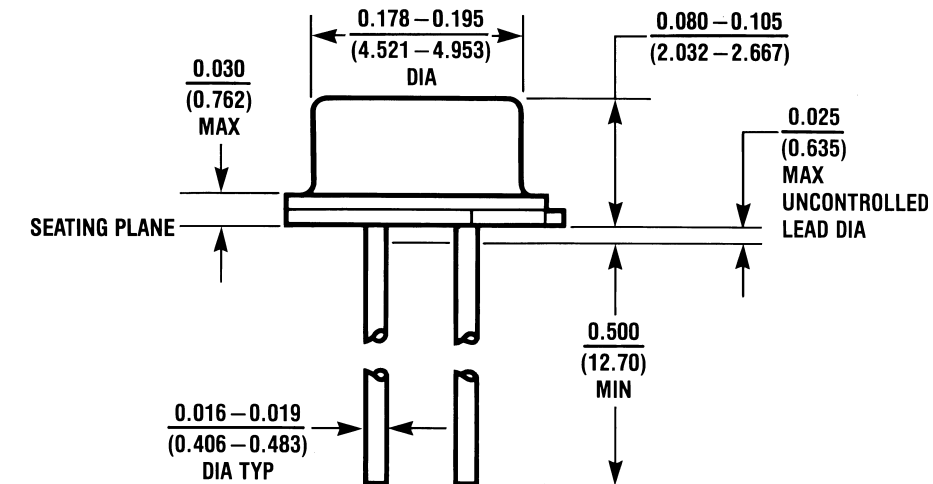
Typical Performance Characteristics (Continued)

Low Frequency Noise Voltage



DS005714-5

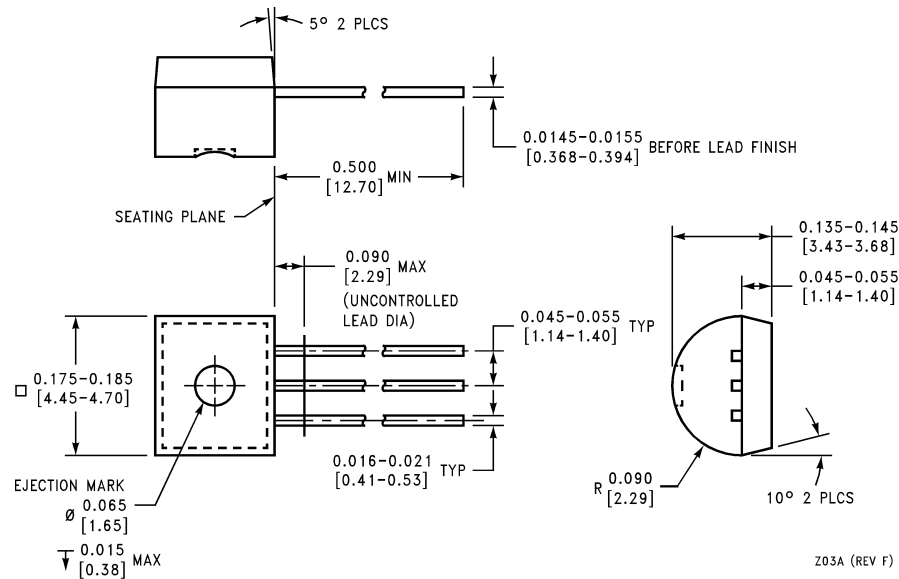
Physical Dimensions inches (millimeters) unless otherwise noted



H02A (REV C)

Metal Can Package
 Order Number LM129AH, LM129AH/883, LM129BH, LM129BH/883,
 LM129CH, LM329AH, LM329BH, LM329CH, or LM329DH
NS Package H02A

Physical Dimensions inches (millimeters) unless otherwise noted (Continued)



Plastic Package
Order Number LM329BZ, LM329CZ, or LM329DZ
NS Package Z03A

LIFE SUPPORT POLICY

NATIONAL'S PRODUCTS ARE NOT AUTHORIZED FOR USE AS CRITICAL COMPONENTS IN LIFE SUPPORT DEVICES OR SYSTEMS WITHOUT THE EXPRESS WRITTEN APPROVAL OF THE PRESIDENT AND GENERAL COUNSEL OF NATIONAL SEMICONDUCTOR CORPORATION. As used herein:

1. Life support devices or systems are devices or systems which, (a) are intended for surgical implant into the body, or (b) support or sustain life, and whose failure to perform when properly used in accordance with instructions for use provided in the labeling, can be reasonably expected to result in a significant injury to the user.
2. A critical component is any component of a life support device or system whose failure to perform can be reasonably expected to cause the failure of the life support device or system, or to affect its safety or effectiveness.



National Semiconductor Corporation
Americas
Tel: 1-800-272-9959
Fax: 1-800-737-7018
Email: support@nsc.com
www.national.com

National Semiconductor Europe
Fax: +49 (0) 180-530 85 86
Email: europe.support@nsc.com
Deutsch Tel: +49 (0) 69 9508 6208
English Tel: +44 (0) 870 24 0 2171
Français Tel: +33 (0) 1 41 91 8790

National Semiconductor Asia Pacific Customer Response Group
Tel: 65-2544466
Fax: 65-2504466
Email: ap.support@nsc.com

National Semiconductor Japan Ltd.
Tel: 81-3-5639-7560
Fax: 81-3-5639-7507