

承 認 書

SPECIFICATTON FOR APPROVAL

USER NAME: _____

PRODUCT : _____ SURGE ABSORBER
(品名)

PART NAME: _____ GS41-141N-T52
(型名)

ISSUE DATE: _____
(提出日)

APPROVED	CHECKED	MADE
葉佳鈺	張良正	徐美華

SHENZHEN FANGXIN ELECTRONICS CO., LTD.

地址:深圳市南山区创业路东方海雅居海典阁17A

TEL: 86-755-26095177 26095310

FAX: 86-755-26095304

E-MAIL: webmaster@spdchina.com

GS41系列規格書

GS41 SPECIFICATTON

一.範圍: 本規格書為玻璃管型突波吸收器之系列產品.

I. Scope: This specifiation covers the series products of the tube type of Surge Absorber.

二. 製品型名:

Part Number System:

例: GS41----201----M----T----52

Example:

1

2

3

4

5

(1) 系列名稱

(1) Series Name

GS41	
靜電型 Electrostatic type	通訊型 Communication type

(2) 直流放電電壓

(2) DC Spark-Over Voltage

前兩位為有效數,第三位數字為 10^1 .例如251為 $25 \times 10^1 = 250$.

The first two digits are a multiplicand. The third number is 10¹. For example:251 means 25 X 10=250.

單位表示伏特 (V).

The Unit of voltage is V.

(3) 直流放電容許誤差值.

Tolerance of DC Spark-Over Voltage

L	M	N
±15%	±20%	±30%

(4) 包裝形態.

Packaging

T	B	RF
帶裝 Taping	散裝 Bulk	帶裝(PANA) Reel

(5) 帶裝尺寸

Taping Dimension

26	52
26mm	52mm

GS41系列規格書

GS41 SPECIFICATTON

三. 溫度範圍.

III. Temperature range

(1) 使用溫度範圍-40°C-----+85°C.

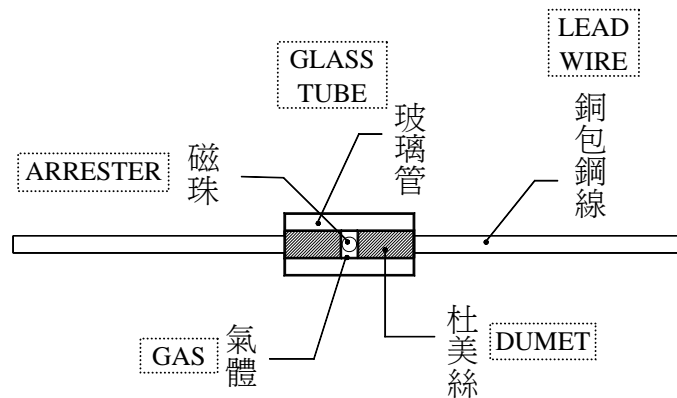
Working temperature range: -40°C-----+85°C.

(2) 保存溫度範圍-40°C-----+85°C.

Storaging temperature range: -40°C-----+85°C.

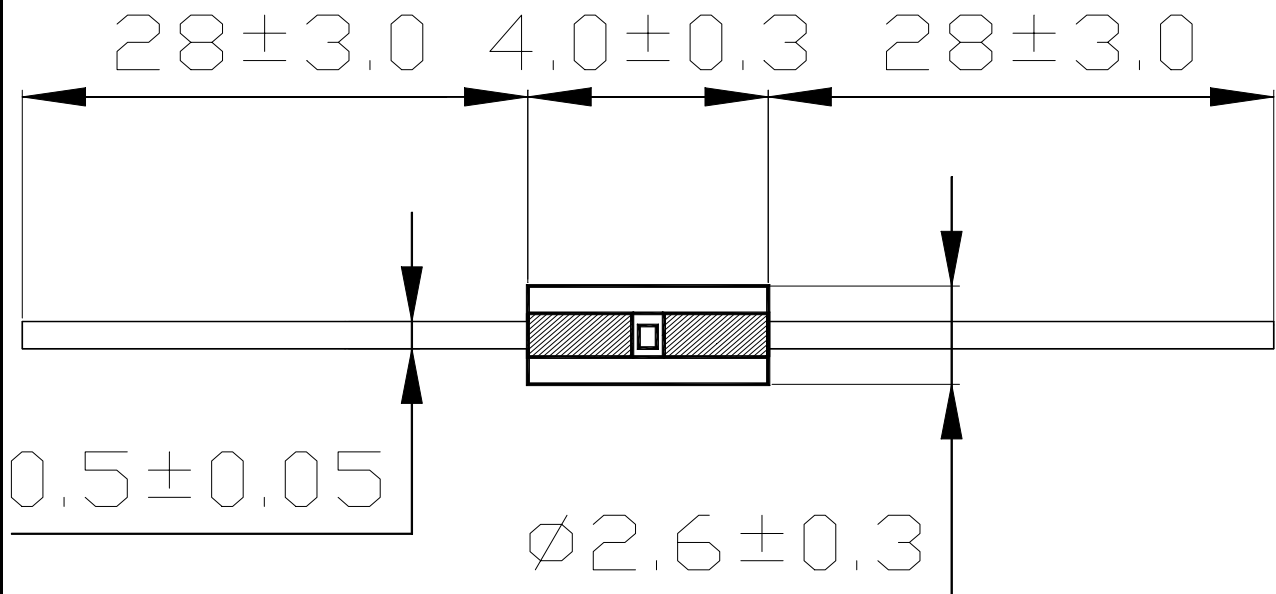
四. 製品結構.

IV. Structure



五. 製品尺寸.

V. Dimension



GS41系列規格書

GS41 SPECIFICATTON

六. 規格值.

VI. Specification

製品編號 (PART NO.)	直流放電電壓 容許值 VS (V) Voltage break down range for	內絕緣電阻值 Insulation Resistance		靜電電容量 Capacitance of electrostatic	突波電流容量 Capacitance of surge current
		使用測定 電壓 Test voltage	IR (Ω)	1KHz-6V (PF)	8X20 μ sec
GS41-141N	98~182	DC 50V	100M Ω min.	1PF max.	1000A

七. 色碼表示

(Marking of color code)



色碼 (Color code)	色帶 (Band)
黑 (Black) 0	製品編號 (Part No.)
棕 (Brown) 1	
紅 (Red) 2	
橙 (Orange) 3	
黃 (Yellow) 4	
綠 (Green) 5	棕 (Brown)
藍 (Blue) 6	
紫 (Purple) 7	
灰 (Gray) 8	
白 (White) 9	

GS41系列規格書

GS41 SPECIFICATION

八. 基本特性. (Initial Characteristics)

項 目 Test Item	測 試 條 件 Test Method	規 格 值 Specification
直流放電電壓 DC Spark-Over Voltage Vs(V)	逐漸地增加測量使用直流電壓, 即可知其開始電壓. 測定電流為一毫安與測定時間最大為一秒(1sec). (1mA) (Add and measure the DC Voltage gradually Max to get the discharge threshold voltage. The measuring current is 1mA/1 second max.)	依仕様值而定 (It depends on each spec.)
內絕緣電阻 Insulation Resistance	在規定的設定直流電壓下, 跨在兩端引線. 即測量其內絕緣電阻值. (Measure the insulation resistance of two end of leadwire under the specified DC voltage.)	100MΩ 或大於100MΩ (100MΩ min.)
靜電電容 Capacitance C(pF)	使用頻率1KHz與小於或等於6V直流電壓之電源. 即測量其靜電電容量. Measure the Electrostatic Capacitance under the test condition of 1KHz, DC 6V(max).	1PF 或小於1PF (1pF max.)

九. 環境試驗. (Environmental Characteristics)

試 驗 項 目 Test Item	試 驗 方 法 Test Method	性 能 Characteristics
耐寒性(依據JIS C0020) Cold Resistance JIS C0020	放置於-40°C±3°C之環境中1000小時後, 取出置於常溫常濕中4小時後, 檢測直流開始放電電壓, 絕緣阻抗, 靜電容量及檢查外觀. After -40±3°C (1000hrs) / room temp, normal humidity(4 hrs) cycle, measure the properties.	滿足各個特性之規格值 Within standard mentioned in Initial Characteristics.
耐熱性(依據JIS C0021) Heat Resistance JIS C0021	放置於125°C±2°C之環境中1000小時後, 取出置於常溫常濕中4小時後, 檢測直流開始放電電壓, 絕緣阻抗, 靜電容量及檢查外觀. After 125±2°C (1000hrs) / room temp., normal humidity(4 hrs) cycle, measure the properties.	滿足各個特性之規格值 Within standard mentioned in Initial Characteristics.
耐濕性(依據JIS C0022) Humidity Resistance JIS C0020	放置於85°C±2°C RH85%之環境中1000小時後, 取出置於常溫常濕中4小時後, 檢測直流開始放電電壓, 絕緣阻抗, 靜電容量及檢查外觀. After 85±2°C, 85% RH (1000hrs)/room temp., normal humidity(4hrs) cycle, measure the properties.	滿足各個特性之規格值 Within standard mentioned in Initial Characteristics.
溫度周期(依據 JISC0025) Temperature Cycle Test (JIS C0025)	-40°C±3°C (30分)~(常溫3分)~125°C±2°C (30分) 為1周期, 重複25次後, 取出置於常溫/常濕中4小時後, 檢測直流開始放電電壓, 絕緣阻抗, 靜電容量及檢查外觀. 25 times repetition of cycle -40±3°C (30 Min.), room temp., (4 Min.), 125±2°C (30 Min.), room temp., normal humidity(4hrs) .	滿足各個特性之規格值 Within standard mentioned in Initial Characteristics.

GS41系列規格書

GS41 SPECIFICATTON

十. 機構特性. (Mechanical Characteristics)

試驗項目 Test Item	試驗方法 Test Method	結果 Specification
拉力強度(依據 JIS C0051) Pull Strength (JIS C0051)	施加2.5Kgf之荷重於導線約30秒鐘後, 檢測直流開始放電電壓, 絕緣阻抗, 靜電容量及檢查外觀. (Apply 2.5 kgs load approximately 30 seconds, then check for pull-out and breaking of the lead wire.)	滿足各個特性之規格值 (Within standard mentioned in Initial Characteristics.)
彎曲強度(依據 JIS C0051) Flexure Strength (JIS C0051)	距離導線熔接點根部約3mm處, 使用曲率半徑0.75~0.80mm之治具, 與軸方向垂直角度, 荷0.25Kgf彎曲後回復原狀, 反復2次後, 檢測直流開始放電電壓, 絕緣阻抗, 靜電容量及檢查外觀. (Bend the lead wire, with jig which radius is 0.75~0.8mm, at the point of 2mm from the body, under 0.25 kgs load applied at the right angle the direction of the amis and get the bent lead wire back to its original poing after the procedure was repeated 2 times.)	滿足各個特性之規格值 (Within standard mentioned in Initial Characteristics.)

十一. 焊錫特性. (Solder Characteristics)

試驗項目 Test Item	試驗方法 Test Method	結果 Specification
焊錫附著性(依據 JIS C0050 4.6 項) Solderability (JIS C0050, 4.6)	將沾過助焊劑之導線, 自距離導線熔接點根部3mm處起, 浸於235±5℃之焊錫液中5秒鐘後, 將導線之助焊劑洗淨後, 檢查焊錫附著情形. (Apply flux and immerse in molten solder, up to the point of 3mm from the body, for 5 sec. (235°C±5°C). Wash the leadwire and check for soldering adhesion.)	導線須均勻附著90%以上. (Lead wire is evenly covered by solder over 90%.)
焊錫耐熱性(依 據JISC0051) Solder Heat (JIS C0051)	將沾過助焊劑之導線, 自距離導線熔接點根部2mm處起, 浸於260±5℃之焊錫液中10±1秒鐘後, 檢測直流開始放電電壓, 絕緣阻抗, 靜電容量及檢查外觀. (Lead wire is dipped up to the point of 2mm from the body, into 260°C±5°C solder for 10±1 sec. And measure the properties.)	滿足各特性之規格值. (Within standard mentioned in Initial Characteristics.)

十二. 突波特性. (Surge Characteristics)

試驗項目 Test Item	試驗方法 Test Method	結果 Specification
突波壽命(GS41) Life(GS41)	將(10X1000) μ sec-1KV突波, 變換極向各6次, (100X1000) μ sec-1KV之突波, 變換極向各6次, 每隔30秒施加於試料24次後, 檢測直流開始放電電壓, 絕緣阻抗, 靜電容量及檢查外觀. (Apply a standard impulse voltage ((10X1000) μ sec) of 1KV for 6 times with intervals of 30 sec., and then change the polarity of the surge and apply a impulse again. And similarly, apply a impulse voltage((100X1000) μ sec) of 1KV. Total apply 24 times. Then measure DC spark-over volatage, IR & Capacitance.)	直流開始放電電壓 GS41 $\Delta V_s/V_s \leq 30\%$ (DC spark-over volatage GS41: $\Delta V_s/V_s \leq 30\%$)
突波壽命(GS41) Life(GS41)	每間隔10秒施加10KV之電壓於1500PF之電容器通過試料, 做200次 (Apply 10 KV voltage charged in 1500pF condenser and apply the current to the specimen, 200 times at 10 seconds of intervals.)	絕緣阻抗: 須滿足規定值. 靜電電容: 須滿足規定值. 外觀: 無影響使用之顯著缺陷 (Insulation Resistance & Capacitance to meet the specified

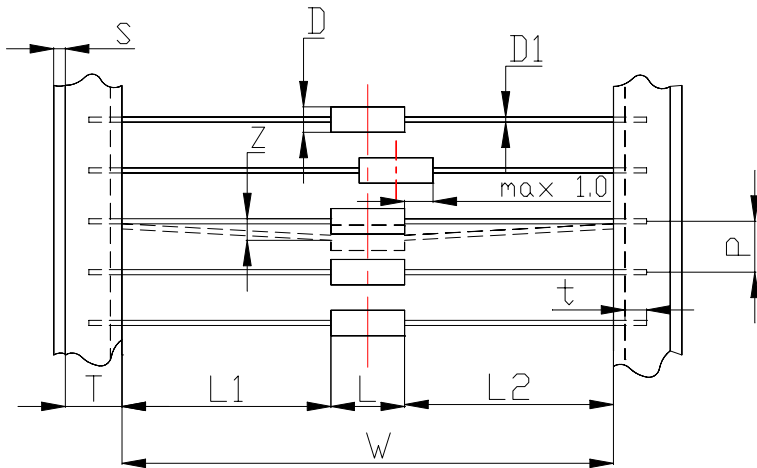
GS41系列規格書

GS41 SPECIFICATTON

十三.包裝 (Taping)

本規格書含GS41系列突波吸收器之包裝.

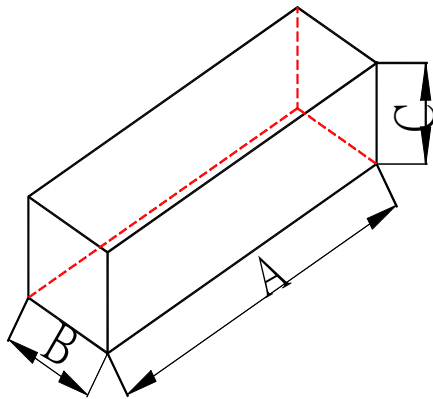
This specification covers the taping of GS41 series.



符號 MARK	(Dimension) mm
W	52+2.0,-1.0
P	5.0±0.5
T	6.0±1.0
Z	1.2 max
L1-L2	1.0 max
S	0.8 max
t	3.2 max
L	4.3±0.3
D1	Φ0.5±0.05
D	Φ2.6±0.3

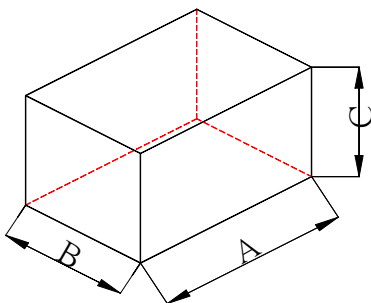
十四.裝箱.(PACKAGE)

(1) 內盒裝 (Inner box):



項目 Item	容 量 Description
長 Length	A=255mm
寬 Width	B=75mm
高 Height	C=68mm
數量 Q'ty	2000PCS
表示 Label	製品型號, 製造LOT NO. Indicate Part No. & Lot No.
包裝 Package	內盒包裝有上,下墊紙板 用來保護製品不受損害 protect the parts from

(2) 外盒裝 (Carton):



項目 Item	容 量 Description
長 Length	A=390mm
寬 Width	B=270mm
高 Height	C=290mm
數量 Q'ty	40000PCS