

ME-5

特點

- 觸點與線圈間的介質耐壓高達：2000V
- 觸點與線圈間的浪湧電壓可達：2500V
- 觸點開關容量可達：2A / 30VDC
- UL 和 CUL 認證號：E179936

觸點參數

觸點組合	2C
接觸電阻	70mΩ
觸點負載(阻性)	2A/30VDC0.5A/125VAC
最大切換電流	2A
最大切換功率	62.5VA / 60W
最大切換電壓	220VDC
最小適用負載	0.01mA/10mV (標準值)
觸電材料	Silver Alloy+ Gold Clad

性能參數

絕緣電阻	Min. 1000MΩ min (500VDC)
介質耐壓	
- 線圈與觸點間	ME-5 2000VAC (1 min.)
- 線圈與觸點間	ME-5-V 3000VAC(1 min)
- 斷開觸點間	1000VAC (1 min.)
- 觸點組間	1500VAC (1 min.)
浪湧電壓	
- 線圈與觸點間	2500V (FCC part 68)
- 斷開觸點間	1500V (FCC part 68)
動作時間 (置位& 復位)	Max. 4 ms
釋放時間	Max. 4 ms
最小置位/復位操作時間	磁保持型：20ms
振動	10 – 55Hz, 穩定性：3.3mm 強度：5mm
衝擊	穩定性：750m/s ² (75g) 強度：1000m/s ² (100g)
相對濕度	35% ~ 85% RH
環境溫度	-40°C ~ +85°C
壽命	
- 電氣	5 x 10 ⁵ 次(1A / 30VDC) 1 x 10 ⁵ 次(2A/30VDC)
- 機械	1 x 10 ⁸ 次

ME-5

線圈參數- 1. 單穩態

額定電壓 (VDC)	最大電壓 VDC(Max.)	動作電壓 VDC(Max.)	釋放電壓 VDC(Min.)	線圈電阻 ($\Omega \pm 10\%$)	線圈功率 (W)
1.5	2.2	1.13	0.2	16	0.14
2.4	3.6	1.8	0.25	41.1	0.14
3	4.5	2.25	0.3	64.3	0.14
4.5	6.7	3.38	0.45	145	0.14
5	7.5	3.75	0.5	178	0.14
6	9	4.5	0.6	257	0.14
9	13.5	6.75	0.9	579	0.14
12	18	9	1.2	1028	0.14
24	36	18	2.4	4114	0.14
48	5.6	36	4.8	8533	0.27

2. 單線圈

額定電壓 (VDC)	最大電壓 VDC (Max.)	置位/復位電壓 VDC(Max.)	線圈電阻 ($\Omega \pm 10\%$)	線圈功率 (W)
1.5	2.2	1.13	22.5	0.1
2.4	3.6	1.8	57.6	0.1
3	4.5	2.25	90	0.1
4.5	6.7	3.38	202.5	0.1
5	7.5	3.75	250	0.1
6	9	4.5	360	0.1
9	13.5	6.75	810	0.1
12	18	9	1440	0.1
24	36	18	5760	0.1

3. 雙線圈

額定電壓 (VDC)	最大電壓 VDC (Max.)	置位/復位電壓 VDC(Max.)	線圈電阻 ($\Omega \pm 10\%$)	線圈功率 (W)
1.5	2.2	1.13	11.25	0.2
2.4	3.6	1.8	28.8	0.2
3	4.5	2.25	45	0.2
4.5	6.7	3.38	101.25	0.2
5	7.5	3.75	125	0.2
6	9	4.5	180	0.2
9	13.5	6.75	405	0.2
12	18	9	720	0.2
24	36	18	2880	0.2

ME-5

訂貨標記示例

ME-5	-	L1	-	12	-	S	-	S
型號	線圈類型	線圈電壓	端腳形式	包裝方式				
ME-5	Nil: 單穩態	1.5、2.4、3、4.5、5、	Nil: 雙列直插型	Nil: 帶盤包裝(僅適用於標準表面貼裝型)				
ME-5-V	L1: 單線圈 L2: 雙線圈	6、9、12、24 and 48VDC	S: 標準表面貼裝型 SMT S1: 特殊表面貼裝型 SMT	R: 管狀包裝				

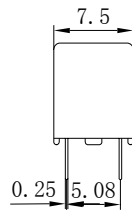
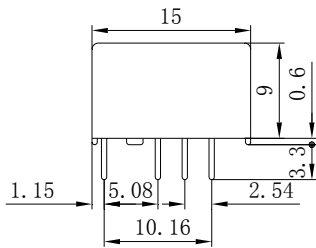
外形尺寸圖、接線圖、安裝孔位圖(單位:mm)

Tolerance: ±0.3

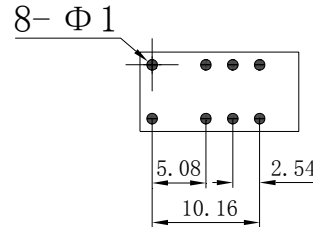
1. Single side stable and 1 coil latching

Outline Dimensions

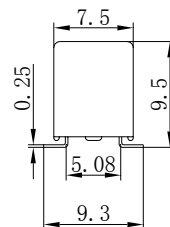
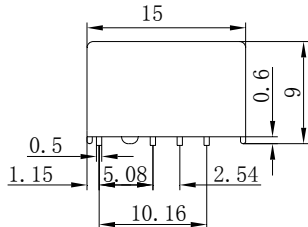
(DIP type)



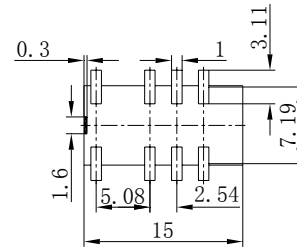
PCB Layout (DIP type) (Bottom view)



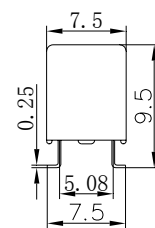
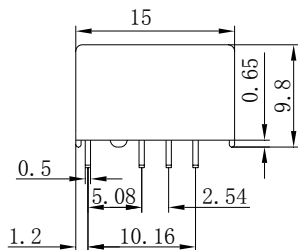
Outline Dimensions (Standard SMT type)



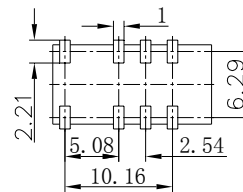
PCB Layout (Standard SMT type) (Bottom view)



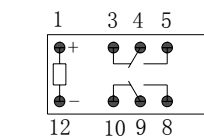
Outline Dimensions (Space saving SMT type)



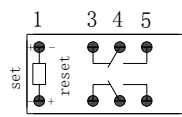
PCB Layout (Space saving SMT type) (Bottom view)



wiring Diagram (Bottom view)



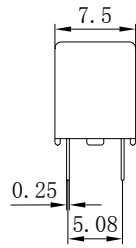
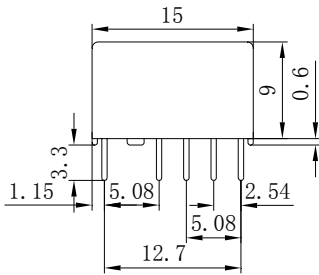
single side stable
No energized condition



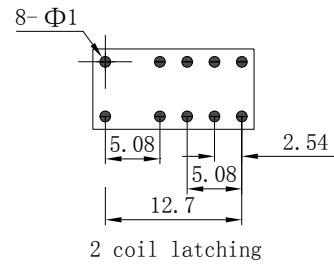
1 coil latching
reset condition

Tolerance: ± 0.3

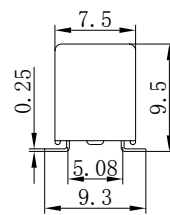
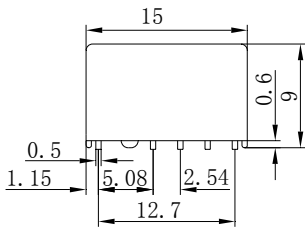
2. Coil latching Outline Dimensions (DIP type)



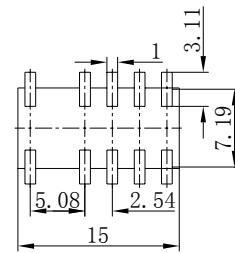
PCB Layout (DIP type) (Bottom view)



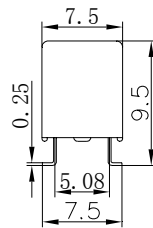
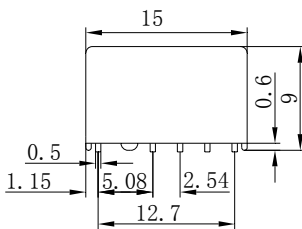
Out line Dimensions (Standard SMT type)



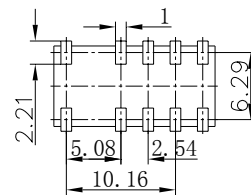
PCB Layout (Standard SMT type) (Bottom view)



Out line Dimensions (Space saving SMT type)



PCB Layout (Space saving SMT type) (Bottom view)



wiring Diagram (Bottom view)

