



Main Feature

1. Epoxy molded Single-In-Line package.
2. Mounting space is less by half compared to Dual-In-Line package.
3. Completely washable.
4. Provide high speed, miniature and cost effective switching solution.

Contact Rating

Load Type	SIR (A)	SIR (AL)
Rated Load (Resistive)	0.5A 100VAC	0.5A 100VAC
Rated Carrying Current	0.5A	0.5A
Max. Allowable Voltage	100 VAC	100 VAC
Max. Allowable Current	1A	1A
Max. Allowable Power Force	50 VA	50 VA
Min. Switching Load	DC 1V, 1mA	DC 1V, 1mA
Contact Material	Ru Alloy	Ru Alloy
Contact Form	SPST	SPST

Application

Security system, Modem and other telecommunication products.

Performance (at Initial Value)

- Contact Resistance 150 mΩ Max. @100mA, 6VDC
- Operate Time 0.5 mSec. Max.
- Release Time 0.5 mSec. Max.
- Dielectric Strength:
 - Between Coil & Contact 1,000 VAC at 50/60 Hz for one minute.
 - Between Contacts 150 VAC at 50/60 Hz for one minute.
- Insulation Resistance 100 MΩ Minimum.

- Temperature Range:
 - Operating-40~85 °C
 - Storage-40~105 °C
- Humidity Range45~85% RH
- Vibration20 G.
- Shock100 G.
- Life Expectancy:
 - Electrical10⁸ Operations at ref. 10VDC, 10mA.
- Wight.....About 1.6g.

Safety Standard & Its File Number

- C-UL.....E141060

Coil Specification (at 20 °C)

Coil Sensitivity	Nominal Voltage (VDC)	Nominal Current (mA)	Coil Resistance ($\Omega \pm 10\%$)	Power Consumption (mW)	Pull-In Voltage (VDC)	Drop-Out Voltage (VDC)	Maximum Allowable Voltage (VDC)
SIR	5	10	500	50	3.75	0.80	16
	12	12	1,000	144	8.60	1.50	24
	24	12	2,000	288	17.50	2.50	32

Ordering Information

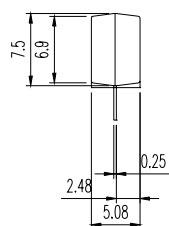
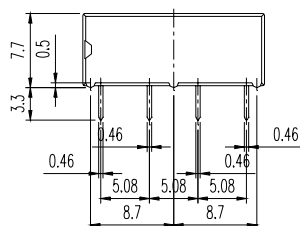
SIR - S 4 - 1 12 A L	Lead Spacing:	Nil: Standard Coil L: Lead spacing 10.16mm
	Contact Form:	A: One Form A
	Coil Voltage:	05: 5V, 12: 12V, 24: 24V
	Number of Pole:	1: One Pole
	Lead Number:	4: 4 Leads
	Coil Construction:	S: Standard D: With Diode
	Type:	SIR

Classification

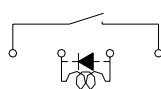
Model	SIR			
Coil Construction	S : Standard		D : With Diode	
Lead Type	4 Leads		4Leads	
Contact Form	1A		1A	
Lead Spacing	Nil : Standard	L : 10.16mm	Nil : Standard	L : 10.16mm
Ordering Type	SIR-S4-1□□A	SIR-S4-1□□AL	SIR-D4-1□□A	SIR-D4-1□□AL

Dimension ($\leq 5\text{mm} \pm 0.2\text{mm}$, $> 5\text{mm} \pm 0.3\text{mm}$, the tolerance of PCB thru hole: $+0.1\text{mm}$)

SIR-S4-1XXA

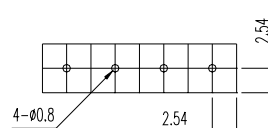


Circuit Schematic



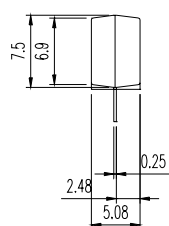
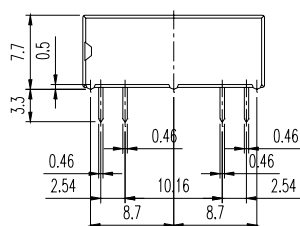
(TOP View)

PCB Layout

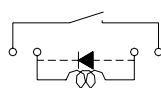


(TOP View)

SIR-S4-1XXAL

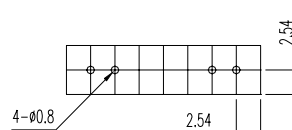


Circuit Schematic



(TOP View)

PCB Layout



(TOP View)