

## Main Feature

1. Epoxy molded Dual-In-Line package.
2. Low profile, mounting space compatible with DIP IC.
3. Completely washable.
4. Provide high speed, miniature and cost effective switching solution.



## Contact Rating

Load Type	DIR
Rated Load (Resistive)	0.5A 100VAC
Rated Carrying Current	0.5A
Max. Allowable Voltage	100 VAC
Max. Allowable Current	1A
Max. Allowable Power Force	50 VA
Min. Switching Load	DC 1V, 1mA
Contact Material	Ru Alloy
Contact Form	SPST

## Application:

Security system, Modem and other telecommunication products.

## Performance (at Initial Value)

- Contact Resistance ..... 150 mΩ Max. @ 100mA, 6VDC
- Operate Time ..... 0.5 mSec. Max.
- Release Time ..... 0.5 mSec. Max.
- Dielectric Strength:
  - Between Coil & Contact ..... 1,000 VAC at 50/60 Hz for one minute.
  - Between Contacts ..... 150 VAC at 50/60 Hz for one minute.

- Insulation Resistance:.....100 MΩ Minimum
- Temperature Range:
  - Operating .....-40~85 °C.
  - Storage .....-40~105 °C.
- Humidity Range .....45~85% RH.
- Vibration.....20 G.
- Shock .....100G.
- Life Expectancy:
  - Electrical .....10<sup>8</sup> Operations at ref. 10VDC, 10mA
- Weight.....About 1.8g

## Safety Standard & Its File Number

- C-UL.....E141060.

## Coil Specification (at 20 °C)

Coil Sensitivity	Nominal Voltage (VDC)	Nominal Current (mA)	Coil Resistance ( $\Omega \pm 10\%$ )	Power Consumption (mW)	Pull-In Voltage (VDC)	Drop-Out Voltage (VDC)	Maximum Allowable Voltage (VDC)
DIR	5	10	500	50	3.75	0.80	16
	12	12	1,000	144	8.60	1.50	24
	24	12	2,000	288	17.50	2.50	32

## Ordering Information

DIR - S 4 - 1 12 A

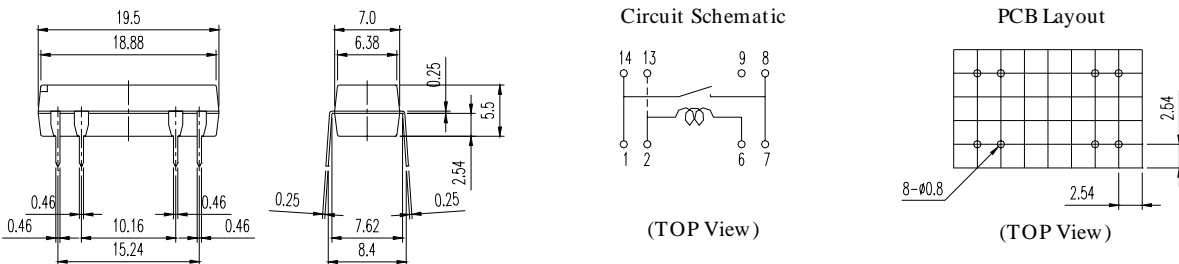
<b>Contact Form:</b>	<b>A:</b> One Form A
<b>Coil Voltage:</b>	<b>05:</b> 5V, <b>12:</b> 12V, <b>24:</b> 24V
<b>Number of Pole:</b>	<b>1:</b> One Pole
<b>Lead Number:</b>	<b>4:</b> 4 Leads <b>8:</b> 8 Leads
<b>Coil Construction:</b>	<b>S:</b> Standard <b>C:</b> Lead 2 & 13 are connected
<b>Type:</b>	<b>DIR</b>

## Classification

Model	DIR			
Coil Construction	Standard		Lead 2 & 13 are connected	
Lead Type	4 Leads	8 Leads	4 Leads	8 Leads
Contact Form	1A	1A	1A	1A
Ordering Type	DIR-S4-1□□A	DIR-S8-1□□A	DIR-C4-1□□A	DIR-C8-1□□A

Dimension ( $\leq 5\text{mm} \pm 0.2\text{mm}$ ,  $> 5\text{mm} \pm 0.3\text{mm}$ , the tolerance of PCB thru hole:  $+0.1\text{mm}$ )

### DIR-S8-1XXA



### DIR-S4-1XXA

