



SGM2268

0.4Ω Ultra Low ON-Resistance, Dual, SPDT Analog Switch

GENERAL DESCRIPTION

The SGM2268 is a dual single-pole/double-throw (SPDT) analog switch that is designed to operate from a single +1.8V to +4.2V power supply. Targeted applications include battery powered equipment that benefit from ultra low on-resistance (0.4Ω) and fast switching speeds.

SGM2268 features guaranteed on-resistance matching (0.04Ω TYP) between switches and guaranteed on-resistance flatness over the signal range (0.08Ω TYP), as well as high off-isolation and low crosstalk. This ensures excellent linearity and low distortion when switching audio signals.

The SGM2268 is a committed dual single-pole/double-throw (SPDT) that consist of two normally open (NO) and two normally close (NC) switches. This configuration can be used as a dual 2-to-1 multiplexer.

SGM2268 is available in Pb-free WQFN-10 package.

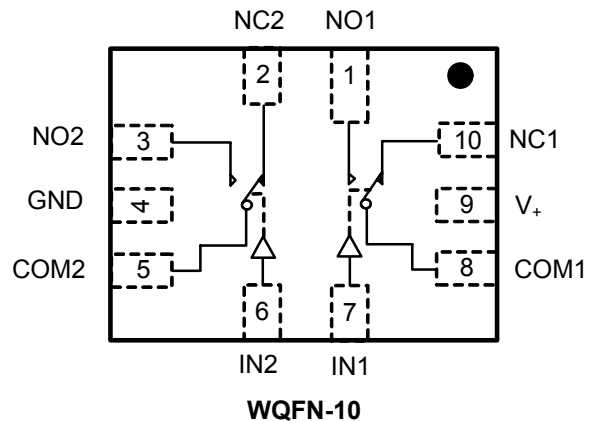
APPLICATIONS

- Portable Instrumentation
- Battery-Operated Equipment
- Computer Peripherals
- Speaker and Earphone Switching
- Medical Equipment
- Audio and Video Switching

FEATURES

- **Voltage Operation: +1.8V to +4.2V**
- **Ultra Low On-Resistance: 0.4Ω (TYP) at +4.2V**
- **On-Resistance Matching : 0.04Ω (TYP)**
- **On-Resistance Flatness: 0.08Ω (TYP)**
- **-3dB Bandwidth: 40MHz**
- **High Off-Isolation: -78dB at 100kHz**
- **Low Crosstalk: -103dB at 100kHz**
- **Rail-to-Rail Input and Output Operation**
- **TTL/CMOS Compatible**
- **Break-Before-Make Switching**
- **Extended Industrial Temperature Range: -40°C to +85°C**
- **Lead (Pb) Free WQFN-10 Package**

PIN CONFIGURATION (TOP VIEW)



FUNCTION TABLE

LOGIC	NO	NC
0	OFF	ON
1	ON	OFF

Switches Shown For Logic "0" Input.

ORDERING INFORMATION

MODEL	PIN-PACKAGE	SPECIFIED TEMPERATURE RANGE	ORDERING NUMBER	PACKAGE MARKING	PACKAGE OPTION
SGM2268	WQFN-10	-40°C to +85°C	SGM2268YWQ10/TR	2268	Tape and Reel, 3000

ABSOLUTE MAXIMUM RATINGS

V ₊ , IN to GND.....	0V to 4.6V	Storage Temperature.....	-65°C to +150°C
Analog, Digital voltage range ⁽¹⁾	-0.3V to (V ₊) + 0.3V	Lead Temperature (soldering, 10s).....	260°C
Continuous Current NO, NC, or COM.....	±250mA	ESD Susceptibility	
Peak Current NO, NC, or COM.....	±350mA	HBM.....	4000V
Operating Temperature Range.....	-40°C to +85°C	MM.....	400V
Junction Temperature.....	150°C		

Stresses beyond those listed under “Absolute Maximum Ratings” may cause permanent damage to the device. These are stress ratings only, and functional operation of the device at these or any other conditions beyond those indicated in the operational sections of the specifications is not implied. Exposure to absolute maximum rating conditions for extended periods may affect device reliability.

Note1: Signals on NC, NO, or COM or IN exceeding V₊ will be clamped by internal diodes. Limit forward diode current to maximum current ratings.

CAUTION

This integrated circuit can be damaged by ESD if you don't pay attention to ESD protection. SGMICRO recommends that all integrated circuits be handled with appropriate precautions. Failure to observe proper handling and installation procedures can cause damage. ESD damage can range from subtle performance degradation to complete device failure. Precision integrated circuits may be more susceptible to damage because very small parametric changes could cause the device not to meet its published specifications.

SGMICRO reserves the right to make any change in circuit design, specification or other related things if necessary without notice at any time. Please contact SGMICRO sales office to get the last datasheet.

PIN DESCRIPTION

WQFN-10	NAME	FUNCTION
9	V ₊	Power supply
4	GND	Ground
7,6	IN1, IN2	Digital control pin to connect the COM terminal to the NO or NC terminals
8,5	COM1, COM2	Common terminal
1,3	NO1, NO2	Normally-open terminal
10,2	NC1, NC2	Normally-closed terminal

Note: NO, NC and COM terminals may be an input or output.

ELECTRICAL CHARACTERISTICS

(V_+ = +4.2V, GND = 0V, V_{IH} = +1.6V, V_{IL} = +0.6V, T_A = -40°C to + 85°C. Typical values are at V_+ = +4.2V, T_A = +25°C, unless otherwise noted.)

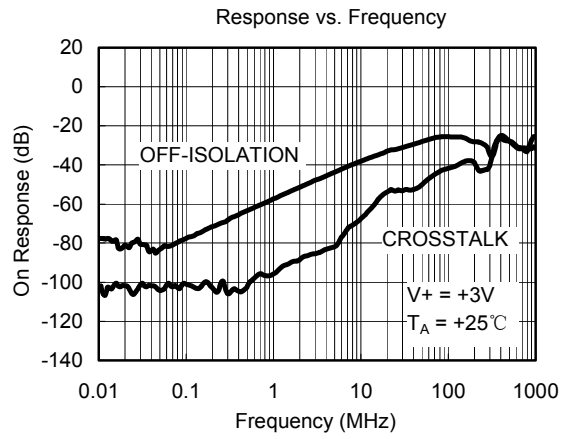
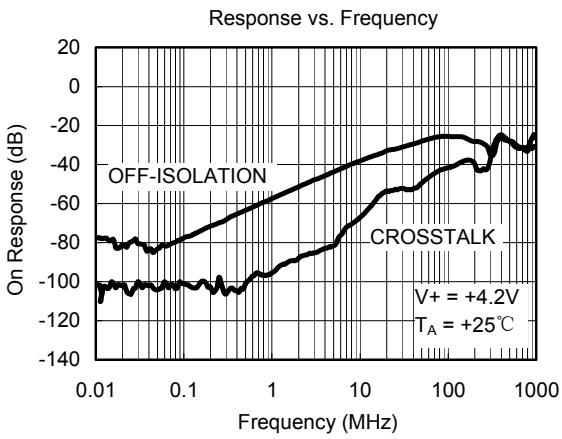
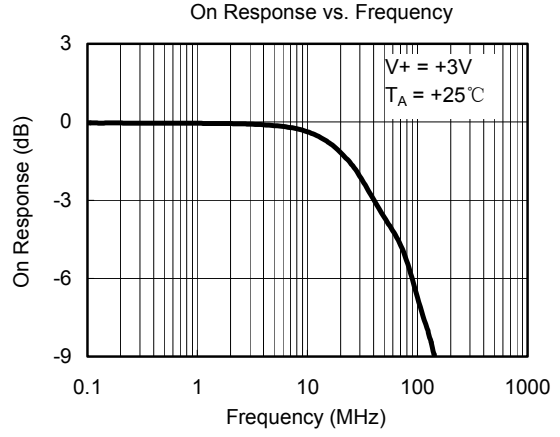
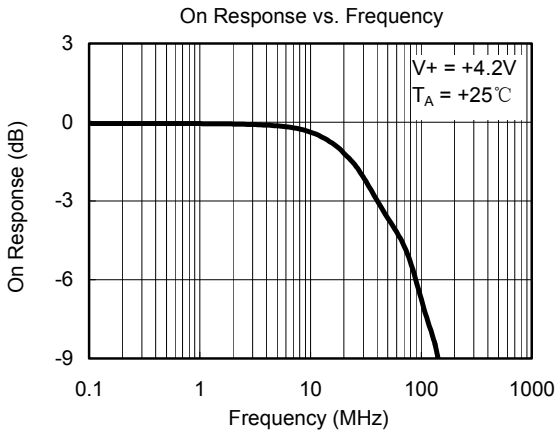
PARAMETER	SYMBOL	CONDITIONS	TEMP	MIN	TYP	MAX	UNITS
ANALOG SWITCH							
Analog Signal Range	V_{NO}, V_{NC}, V_{COM}		-40°C to +85°C	0		V_+	V
On-Resistance	R_{ON}	V_+ = 4.2V, V_{NO}, V_{NC} or V_{COM} = 1V, I_{COM} = -100mA, Test Circuit 1	+25°C		0.4	0.65	Ω
			-40°C to +85°C			0.75	Ω
On-Resistance Match Between Channels	ΔR_{ON}	V_+ = 4.2V, V_{NO}, V_{NC} or V_{COM} = 1V, I_{COM} = -100mA, Test Circuit 1	+25°C		0.04	0.15	Ω
			-40°C to +85°C			0.2	Ω
On-Resistance Flatness	$R_{FLAT(ON)}$	V_+ = 4.2V, V_{NO}, V_{NC} or V_{COM} = 1V, 2.5V, I_{COM} = -100mA, Test Circuit 1	+25°C		0.08	0.12	Ω
			-40°C to +85°C			0.2	Ω
Source OFF Leakage Current	$I_{NC(OFF)}, I_{NO(OFF)}$	V_+ = 4.2V, V_{NO} or V_{NC} = 3.3V/ 0.3V, V_{COM} = 0.3V/ 3.3V	-40°C to +85°C			1	μA
Channel ON Leakage Current	$I_{NC(ON)}, I_{NO(ON)}, I_{COM(ON)}$	V_+ = 4.2V, V_{COM} = 0.3V/ 3.3V, V_{NO} or V_{NC} = 0.3V/ 3.3V, or floating	-40°C to +85°C			1	μA
DIGITAL INPUTS							
Input High Voltage	V_{INH}		-40°C to +85°C	1.6			V
Input Low Voltage	V_{INL}		-40°C to +85°C			0.5	V
Input Leakage Current	I_{IN}	V_+ = 4.2V, V_{IN} = 0V or 4.2V	-40°C to +85°C			1	μA
DYNAMIC CHARACTERISTICS							
Turn-On Time	t_{ON}	V_{IN} = 2.1V to 0V, R_L = 50Ω, C_L = 35pF, V_{NO1} or V_{NC1} = V_{NO2} or V_{NC2} = 2.1V, Test Circuit2	+25°C		88		ns
Turn-Off Time	t_{OFF}	V_{IN} = 2.1V to 0V, R_L = 50Ω, C_L = 35pF, V_{NO1} or V_{NC1} = V_{NO2} or V_{NC2} = 2.1V, Test Circuit2	+25°C		16		ns
Break-Before-Make Time Delay	t_D	V_{IN} = 2.1V to 0V, R_L = 50Ω, C_L = 35pF, V_{NO1} or V_{NC1} = V_{NO2} or V_{NC2} = 2.1V, Test Circuit3	+25°C		6.0		ns
Off Isolation	O_{ISO}	V_{BIAS} = 2.1V, Signal = 0dBm, Test Circuit4	100kHz	+25°C		-78	dB
			1MHz	+25°C		-58	dB
Channel-to-Channel Crosstalk	X_{TALK}	V_{BIAS} = 2.1V, Signal = 0dBm, Test Circuit5	100kHz	+25°C		-103	dB
			1MHz	+25°C		-90	dB
-3dB Bandwidth	BW	V_{BIAS} = 2.1V, Signal = 0dBm, Test Circuit6	+25°C		40.0		MHz
Charge Injection Select Input to Common I/O	Q	V_G = 0V, R_s = 0Ω, C_L = 1.0nF, Test Circuit7	+25°C		4.0		pC
Channel ON Capacitance	C_{ON}		+25°C		106		pF
POWER REQUIREMENTS							
Power Supply Range	V_+		-40°C to +85°C	1.8		4.2	V
Power Supply Current	I_+	V_+ = 4.2V, V_{IN} = 0V or V_+	-40°C to +85°C			1	μA

ELECTRICAL CHARACTERISTICS

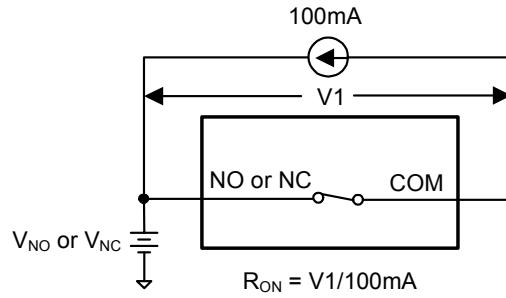
(V_+ = +2.7V to +3.6V, GND = 0V, V_{IH} = +1.6V, V_{IL} = +0.4V, T_A = -40°C to +85°C. Typical values are at V_+ = +3.0V, T_A = +25°C, unless otherwise noted.)

PARAMETER	SYMBOL	CONDITIONS	TEMP	MIN	TYP	MAX	UNITS
ANALOG SWITCH							
Analog Signal Range	V_{NO}, V_{NC}, V_{COM}		-40°C to +85°C	0		V_+	V
On-Resistance	R_{ON}	V_+ = 2.7V, V_{NO}, V_{NC} or V_{COM} = 1V, I_{COM} = -100mA, Test Circuit 1	+25°C		0.5	0.7	Ω
			-40°C to +85°C			0.8	Ω
On-Resistance Match Between Channels	ΔR_{ON}	V_+ = 2.7V, V_{NO}, V_{NC} or V_{COM} = 1V, I_{COM} = -100mA, Test Circuit 1	+25°C		0.03	0.15	Ω
			-40°C to +85°C			0.2	Ω
On-Resistance Flatness	$R_{FLAT(ON)}$	V_+ = 2.7V, V_{NO}, V_{NC} or V_{COM} = 1V, 2.5V, I_{COM} = -100mA, Test Circuit 1	+25°C		0.1	0.18	Ω
			-40°C to +85°C			0.2	Ω
Source OFF Leakage Current	$I_{NC(OFF)}, I_{NO(OFF)}$	V_+ = 3.6V, V_{NO} or V_{NC} = 3.3V / 0.3V, V_{COM} = 0.3V/ 3.3V	-40°C to +85°C			1	μA
Channel ON Leakage Current	$I_{NC(ON)}, I_{NO(ON)}, I_{COM(ON)}$	V_+ = 3.6V, V_{COM} = 0.3V/ 3.3V, V_{NO} or V_{NC} = 0.3V/ 3.3V, or floating	-40°C to +85°C			1	μA
DIGITAL INPUTS							
Input High Voltage	V_{INH}		-40°C to +85°C	1.5			V
Input Low Voltage	V_{INL}		-40°C to +85°C			0.4	V
Input Leakage Current	I_{IN}	V_+ = 2.7V, V_{IN} = 0V or 2.7V	-40°C to +85°C			1	μA
DYNAMIC CHARACTERISTICS							
Turn-On Time	t_{ON}	V_{IN} = 1.5V to 0V, R_L = 50Ω, C_L = 35pF, V_{NO1} or V_{NC1} = V_{NO2} or V_{NC2} = 1.5V, Test Circuit2	+25°C		100		ns
Turn-Off Time	t_{OFF}	V_{IN} = 1.5V to 0V, R_L = 50Ω, C_L = 35pF, V_{NO1} or V_{NC1} = V_{NO2} or V_{NC2} = 1.5V, Test Circuit2	+25°C		20		ns
Break-Before-Make Time Delay	t_D	V_{IN} = 1.5V to 0V, R_L = 50Ω, C_L = 35pF, V_{NO1} or V_{NC1} = V_{NO2} or V_{NC2} = 1.5V, Test Circuit3	+25°C		9.2		ns
Off Isolation	O_{ISO}	V_{BIAS} = 2.1V, Signal = 0dBm, Test Circuit4	100kHz	+25°C		-78	dB
			1MHz	+25°C		-58	dB
Channel-to-Channel Crosstalk	X_{TALK}	V_{BIAS} = 2.1V, Signal = 0dBm, Test Circuit5	100kHz	+25°C		-103	dB
			1MHz	+25°C		-90	dB
-3dB Bandwidth	BW	V_{BIAS} = 2.1V, Signal = 0dBm, Test Circuit6	+25°C		40		MHz
Charge Injection Select Input to Common I/O	Q	V_G = 0V, R_s = 0Ω, C_L = 1.0nF, Test Circuit7	+25°C		3.0		pC
Channel ON Capacitance	C_{ON}		+25°C		106		pF

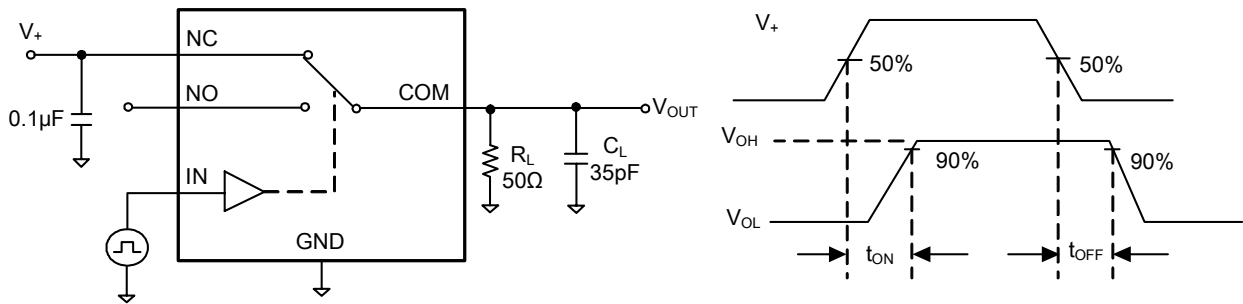
TYPICAL PERFORMANCE CHARACTERISTICS



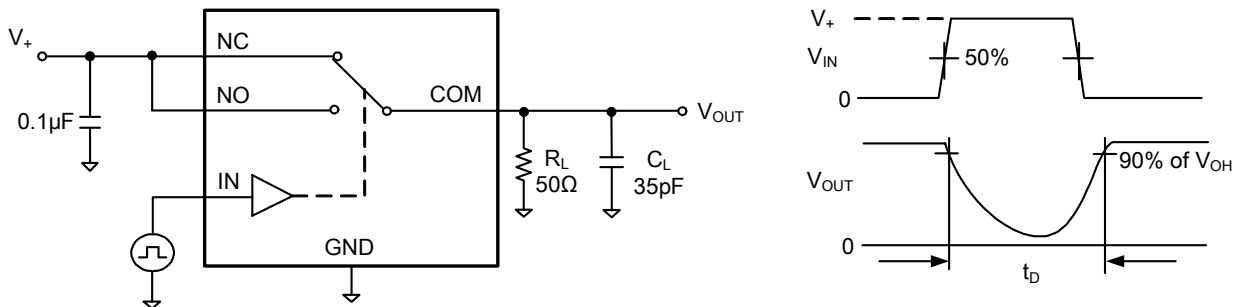
TEST CIRCUITS



Test Circuit 1. On Resistance

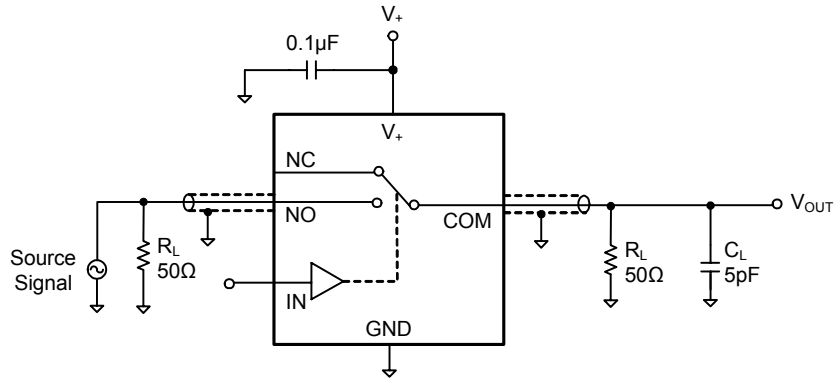


Test Circuit 2. Switching Times (t_{ON} , t_{OFF})

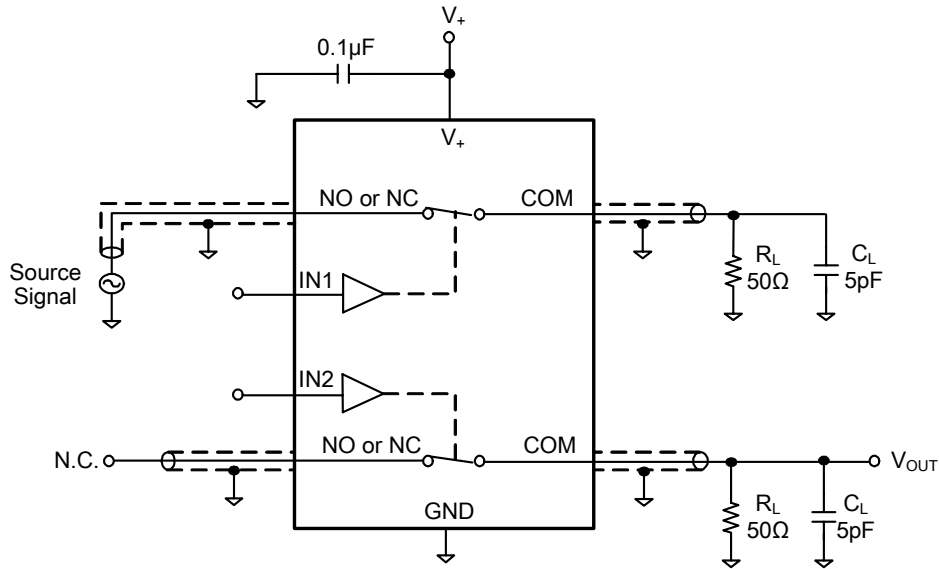


Test Circuit 3. Break-Before-Make Time (t_D)

TEST CIRCUITS (Cont.)



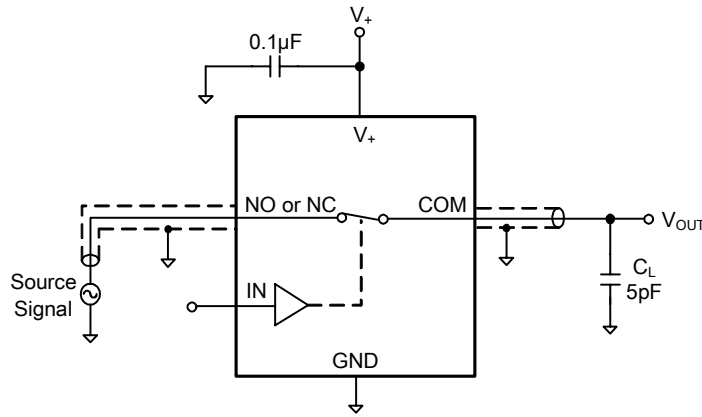
Test Circuit 4. Off Isolation



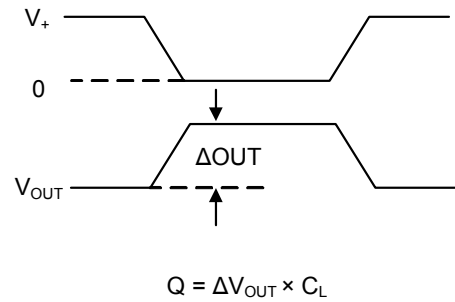
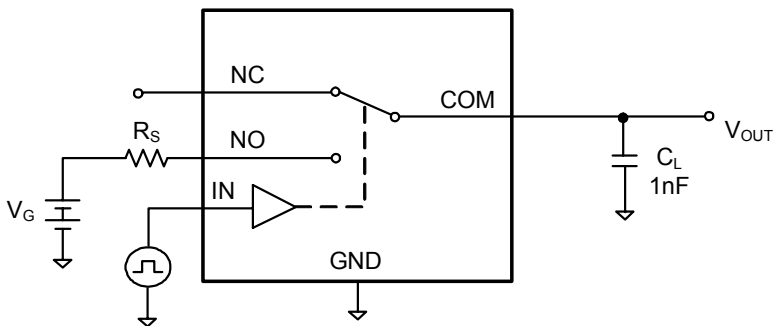
$$\text{Channel To Channel Crosstalk} = -20 \times \log \frac{V_{NO \text{ or } V_{NC}}}{V_{OUT}}$$

Test Circuit 5. Channel-to-Channel Crosstalk

TEST CIRCUITS (Cont.)



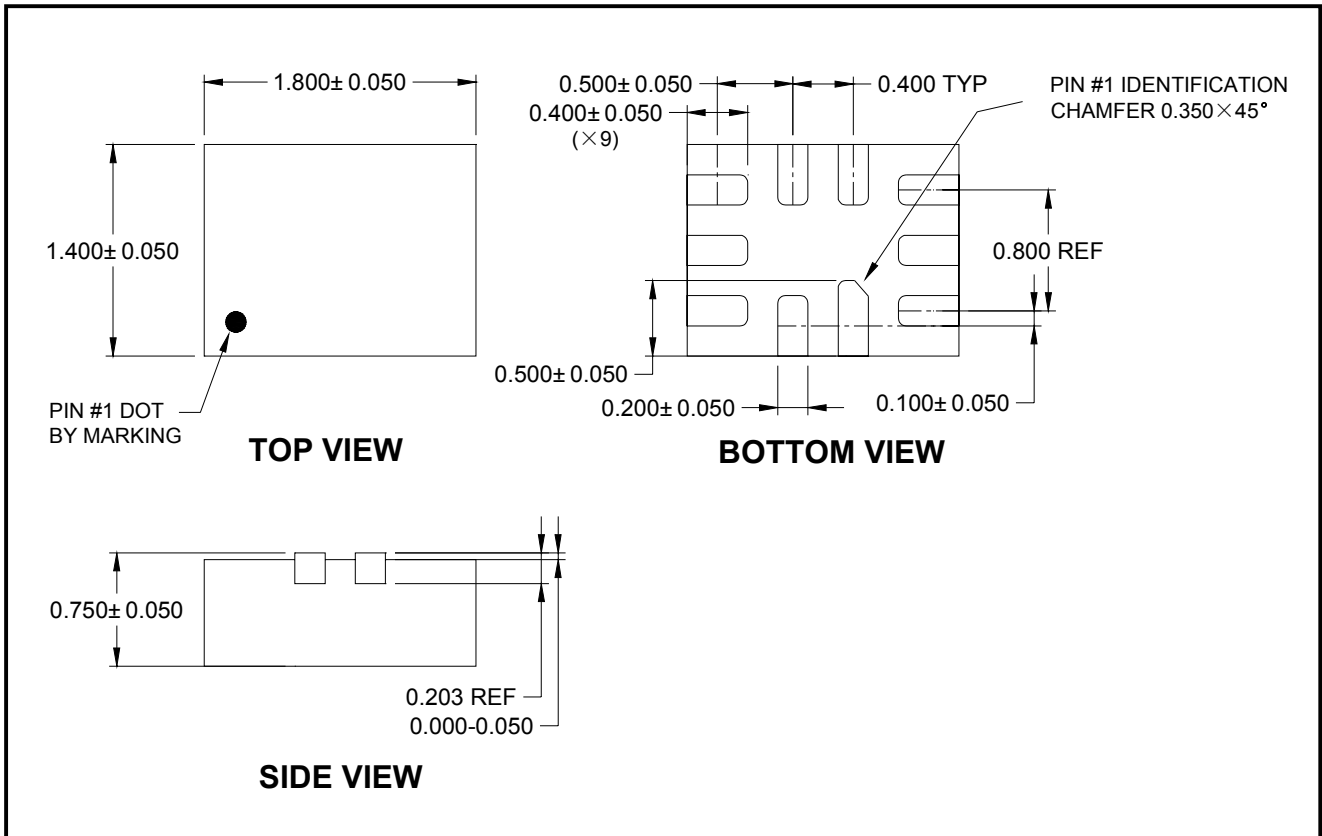
Test Circuit 6. -3dB Bandwidth



Test Circuit 7. Charge Injection (Q)

PACKAGE OUTLINE DIMENSIONS

WQFN-10



NOTE: All linear dimensions are in millimeters.