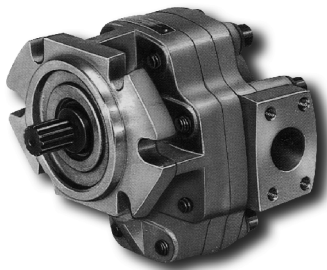


# GPC4 Series



# 齒輪泵 GEAR PUMP

## 一、概述 Description

GPC4系列齿轮泵是具有轴向挠性补偿和径向液压平衡的外啮合齿轮泵。采用三开式结构，由前盖、中间体、后盖、齿轮、压力板和密封件等零部件组成。

该系列齿轮泵结构简单、工作可靠、广泛应用于拖拉机、工程机械和其它机械的液压系统中。

GPC4系列齿轮泵可以提供各种符合SAE和国家标准的法兰、轴伸、进出口连接。

The series of GPC4 gear pump are external pump with axial flexible compensation and radial hydraulic balance and adopted with three section structure, as front cover, middle housing back cover, gear, pressure plate and seals etc.

This pump features with simple structure, reliable performance and broadly applied in tractors, construction machines and other mechanical machines.

Pumps with all kinds of mounting flanges, shaft ends, connectors of inlet and outlet in SAE and Chinese standard is also available.

## 二、型号说明 Model instruction

**GP C 4 - \*\* -\* (\*)\* F1-30 - \***  
**① ② ③ ④ ⑤ ⑥ ⑦ ⑧ ⑨**

- |   |  |  |
|---|--|--|
| <p>①、齿轮泵<br/>②、系列号<br/>③、结构代号<br/>④、公称排量：(ml/r)<br/>20、25、32、40、50、63、80<br/>⑤、安装法兰形式（前盖代号）<br/>B:SAE "B"型法兰 止口φ101.6<br/>C:SAE "C"型法兰 止口φ127<br/>1:GB2353.1-94"A"型和"B"型组合法兰<br/>125 AB24HW<br/>2:GB2353.1-94"A"型和"B"型组合法兰<br/>100 AB24HW<br/>⑥、轴伸形式<br/>1:SAE 平键圆柱轴伸φ22.22<br/>键6.35×6.35×28<br/>2:SAE 平键圆柱轴伸φ31.75键8×7×40</p> | <p>6:SAE渐开线花键轴伸16/32 DP 13齿<br/>7: SAE渐开线花键轴伸 12/24 DP 14齿<br/>E1:平键圆柱轴伸φ25键8×36<br/>E2:平键圆柱轴伸φ30键8×50<br/>H6:渐开线花键轴伸EXT15Z×1.5m×30p<br/>×5d GB3478.1-83<br/>H7:渐开线花键轴伸EXT15Z×2m×30p<br/>×5d GB3478.1-83<br/>F:法兰连接<br/>1: 进油口φ32 58.7×30.2<br/>出油口φ25 52.4×26.2<br/>⑧、设计编号<br/>⑨、旋向（从轴端看）<br/>L: 左旋（逆时针）<br/>R: 右旋（顺时针）</p> | <p>①、Gear pump<br/>②、Series number<br/>③、Frame size<br/>④、Nominal displacement: (ml/r)<br/>20、25、32、40、50、63、80<br/>⑤、Mounting flange (front cover code)<br/>B:SAE "B"flange spigot φ101.6<br/>C:SAE "C"flange spigot φ127<br/>1:GB2353.1-94"A"and"B"combined<br/>flange 125 AB24HW<br/>2:GB2353.1-94"A"and"B"combined<br/>flange 100 AB24HW<br/>⑥、Shaft end<br/>1: SAE straight keyed shaft φ22.22<br/>key 6.35×6.35×28<br/>2: SAE straight keyed shaft φ31.7<br/>key 8×7×40<br/>⑦、Ports connection<br/>F: Flange connection 1:<br/>Inlet φ32 58.7×30.2 Outlet φ25 52.4×26.2<br/>⑧、Design number<br/>⑨、Direction of rotation(looking onto shaft end)<br/>L:left hand(counter clockwise)<br/>R:right hand(clockwise)</p> |
|---|--|--|

## 三、性能参数及尺寸 Specifications and Application Data

型号规格 Model size	理论排量 theoretic displacement (ml/r)	额定压力 rated pressure (MPa)	公称转速 nominal speed (r/min)	最低转速 Min speed (r/min)	输入功率(Kw) (额定压力公称转速下) Input power @ rated speed & pressure	质量 Mass (kg)
GPC4-20	21.0	25	3300	900	36.55	8.3
GPC4-25	26.2	25	3300	900	45.60	8.6
GPC4-32	32.8	25	3150	900	53.15	9.0
GPC4-40	42.0	25	3000	900	64.81	9.4
GPC4-50	52.5	23	2700	800	67.08	9.7
GPC4-63	65.6	20	2500	700	67.49	10.2
GPC4-80	78.7	18	2300	600	67.04	10.7

注：对于SAE "B"型和2号前盖，质量减少0.5Kg

The mass is reduced by 0.5 kg for front cover in SAE "B" and No.2