

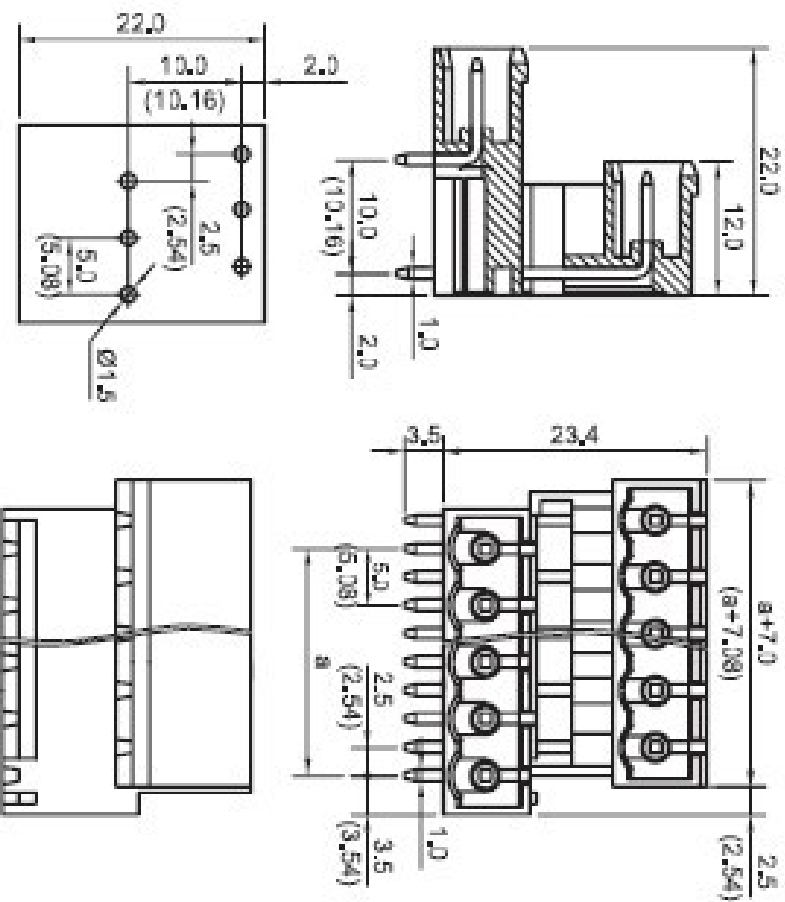


Pitch :5.00mm;508mm

Poles: 2~24 poles

Approval: 

YE130-500 / YE130-508



P.C.B LAYOUT

◆ 材质及电镀

方 针 : 黄铜镀锡
塑 件 : PA66, UL94V-0
颜 色 : 绿色

◆ Material

Pin for : Brass, Tin Plated
Housing : PA66, UL94V-0
Color : Green

◆ 工作环境

操作温度 : -40° ~ +150°
瞬间温度 : +250° 5秒

◆ Environmental

Operation temperature : -40° ~ +150°
Short-time temperature : +250° for 5 sec

◆ 电气规格

额定电压 : 300V
额定电流 : 16A
接触电阻 : 20mΩ
绝缘电阻 : >5000MΩ DC500V
耐电 压 : AC2000V/1Min

◆ Electrical

Rated voltage : 300V
Rated current : 16A
Contact resistance : 20m Ω
Insulationt resistance : >5000MΩ DC500V
Withstanding voltage : AC2000V/1Min