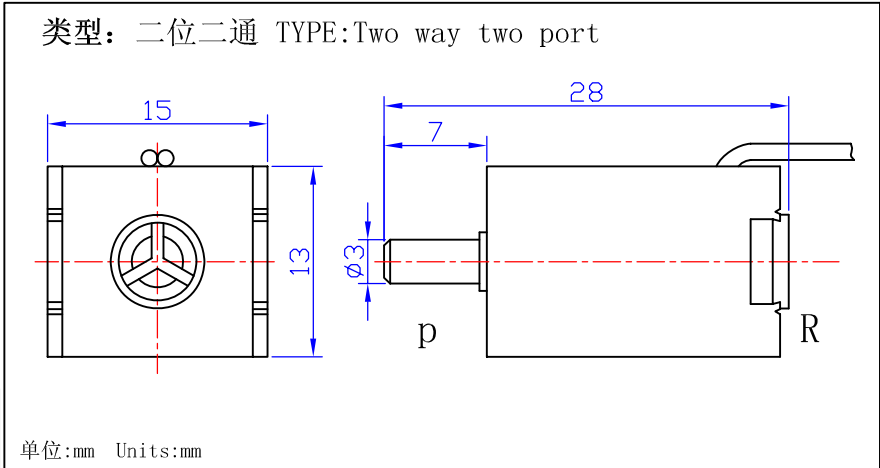
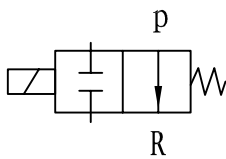


ZHV-0520S Solenoids Valve



总重量 Total Weight: 13g
应用范围: 电子血压计等
APPLICATION: BLOOD PRESSURE GAUGE etc

常开排气型
(Gas use)
normal open



综合特性 GENERAL FEATURES

1. 常用压力: 300mmHg
In common use pressure: 300mmHg
2. 使用电压范围: DC3.5 ~ 6V
Use voltage range: DC3.5 ~ 6V
3. 电流: 60mA (at DC 6V 20°C)
Current: 60mA (at DC 6V 20°C)
4. 寿命: 典型值为50万次 (连续)
LIFE : REPETITIVE OPERATION FOR 0.5MILLION CYCLE (CONTINUOUS)
5. 绝缘等级: B类
Insulation class: class B

COIL DATA线圈资料

Duty cycle (%) = $\frac{\text{"ON" time}}{\text{"ON" time} + \text{"OFF" time}} \times 100\%$		Continuous (100%)	Or less (50%)	Or less (25%)	Or less (10%)
工作周期 (%) = $\frac{\text{工作时间}}{\text{工作时间} + \text{断开时间}} \times 100\%$		连续 (100%)	间断 (50%)	间断 (25%)	间断 (10%)
MAX. "on" time in seconds 最大工作时间 (秒)		∞			
Watts at 20°C 瓦特数 (在20°C)		0.36			
Ampere-turns at 20°C 安匝值 (在20°C)		128			
Type no.	Resistance (20°C) Ω ±10%	No. Turns	VoltS DC 电压		
型号	阻值 (Ω) ±10%	线圈匝数			
ZHV-0520S	35	1290	6		

ZHV