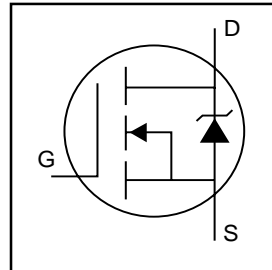


# IRF3205

HEXFET® Power MOSFET

- Advanced Process Technology
- Ultra Low On-Resistance
- Dynamic dv/dt Rating
- 175°C Operating Temperature
- Fast Switching
- Fully Avalanche Rated

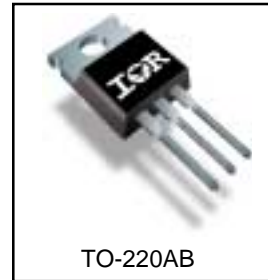


|                                |
|--------------------------------|
| $V_{DSS} = 55V$                |
| $R_{DS(on)} = 8.0m\Omega$      |
| $I_D = 110A^{\textcircled{5}}$ |

## Description

Advanced HEXFET® Power MOSFETs from International Rectifier utilize advanced processing techniques to achieve extremely low on-resistance per silicon area. This benefit, combined with the fast switching speed and ruggedized device design that HEXFET power MOSFETs are well known for, provides the designer with an extremely efficient and reliable device for use in a wide variety of applications.

The TO-220 package is universally preferred for all commercial-industrial applications at power dissipation levels to approximately 50 watts. The low thermal resistance and low package cost of the TO-220 contribute to its wide acceptance throughout the industry.



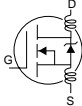
## Absolute Maximum Ratings

|                           | Parameter  | Max.                         | Units |
|---------------------------|--|------------------------------|-------|
| $I_D @ T_C = 25^\circ C$  | Continuous Drain Current, $V_{GS} @ 10V$             | 110 $\text{\textcircled{5}}$ | A     |
| $I_D @ T_C = 100^\circ C$ | Continuous Drain Current, $V_{GS} @ 10V$             | 80                           |       |
| $I_{DM}$                  | Pulsed Drain Current $\text{\textcircled{1}}$        | 390                          |       |
| $P_D @ T_C = 25^\circ C$  | Power Dissipation                                    | 200                          | W     |
|                           | Linear Derating Factor                               | 1.3                          | W/°C  |
| $V_{GS}$                  | Gate-to-Source Voltage                               | $\pm 20$                     | V     |
| $I_{AR}$                  | Avalanche Current $\text{\textcircled{1}}$           | 62                           | A     |
| $E_{AR}$                  | Repetitive Avalanche Energy $\text{\textcircled{1}}$ | 20                           | mJ    |
| dv/dt                     | Peak Diode Recovery dv/dt $\text{\textcircled{3}}$   | 5.0                          | V/ns  |
| $T_J$                     | Operating Junction and                               | -55 to + 175                 | °C    |
| $T_{STG}$                 | Storage Temperature Range                            |                              |       |
|                           | Soldering Temperature, for 10 seconds                |                              |       |
|                           | Mounting torque, 6-32 or M3 screw                    | 10 lbf•in (1.1N•m)           |       |

## Thermal Resistance

|                 | Parameter                           | Typ. | Max. | Units |
|-----------------|-------------------------------------|------|------|-------|
| $R_{\theta JC}$ | Junction-to-Case                    | —    | 0.75 | °C/W  |
| $R_{\theta CS}$ | Case-to-Sink, Flat, Greased Surface | 0.50 | —    |       |
| $R_{\theta JA}$ | Junction-to-Ambient                 | —    | 62   |       |

## Electrical Characteristics @ T<sub>J</sub> = 25°C (unless otherwise specified)

|                                      | Parameter                            | Min. | Typ.  | Max. | Units | Conditions   |
|--------------------------------------|--------------------------------------|------|-------|------|-------|--|
| V <sub>(BR)DSS</sub>                 | Drain-to-Source Breakdown Voltage    | 55   | —     | —    | V     | V <sub>GS</sub> = 0V, I <sub>D</sub> = 250μA   |
| ΔV <sub>(BR)DSS/ΔT<sub>J</sub></sub> | Breakdown Voltage Temp. Coefficient  | —    | 0.057 | —    | V/°C  | Reference to 25°C, I <sub>D</sub> = 1mA  |
| R <sub>DS(on)</sub>                  | Static Drain-to-Source On-Resistance | —    | —     | 8.0  | mΩ    | V <sub>GS</sub> = 10V, I <sub>D</sub> = 62A ④  |
| V <sub>GS(th)</sub>                  | Gate Threshold Voltage               | 2.0  | —     | 4.0  | V     | V <sub>DS</sub> = V <sub>GS</sub> , I <sub>D</sub> = 250μA                           |
| g <sub>fs</sub>                      | Forward Transconductance             | 44   | —     | —    | S     | V <sub>DS</sub> = 25V, I <sub>D</sub> = 62A④   |
| I <sub>DSS</sub>                     | Drain-to-Source Leakage Current      | —    | —     | 25   | μA    | V <sub>DS</sub> = 55V, V <sub>GS</sub> = 0V  |
|                                      |                                      | —    | —     | 250  |       | V <sub>DS</sub> = 44V, V <sub>GS</sub> = 0V, T <sub>J</sub> = 150°C                  |
| I <sub>GSS</sub>                     | Gate-to-Source Forward Leakage       | —    | —     | 100  | nA    | V <sub>GS</sub> = 20V  |
|                                      | Gate-to-Source Reverse Leakage       | —    | —     | -100 |       | V <sub>GS</sub> = -20V   |
| Q <sub>g</sub>                       | Total Gate Charge                    | —    | —     | 146  | nC    | I <sub>D</sub> = 62A   |
| Q <sub>gs</sub>                      | Gate-to-Source Charge                | —    | —     | 35   |       | V <sub>DS</sub> = 44V  |
| Q <sub>gd</sub>                      | Gate-to-Drain ("Miller") Charge      | —    | —     | 54   |       | V <sub>GS</sub> = 10V, See Fig. 6 and 13   |
| t <sub>d(on)</sub>                   | Turn-On Delay Time                   | —    | 14    | —    | ns    | V <sub>DD</sub> = 28V  |
| t <sub>r</sub>                       | Rise Time                            | —    | 101   | —    |       | I <sub>D</sub> = 62A   |
| t <sub>d(off)</sub>                  | Turn-Off Delay Time                  | —    | 50    | —    |       | R <sub>G</sub> = 4.5Ω  |
| t <sub>f</sub>                       | Fall Time                            | —    | 65    | —    |       | V <sub>GS</sub> = 10V, See Fig. 10 ④   |
| L <sub>D</sub>                       | Internal Drain Inductance            | —    | 4.5   | —    | nH    | Between lead,<br>6mm (0.25in.)<br>from package<br>and center of die contact          |
| L <sub>S</sub>                       | Internal Source Inductance           | —    | 7.5   | —    |       |  |
| C <sub>iss</sub>                     | Input Capacitance                    | —    | 3247  | —    | pF    | V <sub>GS</sub> = 0V   |
| C <sub>oss</sub>                     | Output Capacitance                   | —    | 781   | —    |       | V <sub>DS</sub> = 25V  |
| C <sub>rss</sub>                     | Reverse Transfer Capacitance         | —    | 211   | —    |       | f = 1.0MHz, See Fig. 5   |
| E <sub>AS</sub>                      | Single Pulse Avalanche Energy②       | —    | 1050⑥ | 264⑦ |       | mJ   |

## Source-Drain Ratings and Characteristics

|                 | Parameter                                 | Min.   | Typ. | Max. | Units | Conditions  |
|-----------------|---|--|------|------|-------|---|
| I <sub>S</sub>  | Continuous Source Current<br>(Body Diode) | —  | —    | 110  | A     | MOSFET symbol<br>showing the<br>integral reverse<br>p-n junction diode. |
| I <sub>SM</sub> | Pulsed Source Current<br>(Body Diode)①    | —  | —    | 390  |       |   |
| V <sub>SD</sub> | Diode Forward Voltage                     | —  | —    | 1.3  | V     | T <sub>J</sub> = 25°C, I <sub>S</sub> = 62A, V <sub>GS</sub> = 0V ④     |
| t <sub>rr</sub> | Reverse Recovery Time                     | —  | 69   | 104  | ns    | T <sub>J</sub> = 25°C, I <sub>F</sub> = 62A                             |
| Q <sub>rr</sub> | Reverse Recovery Charge                   | —  | 143  | 215  | nC    | di/dt = 100A/μs ④   |
| t <sub>on</sub> | Forward Turn-On Time                      | Intrinsic turn-on time is negligible (turn-on is dominated by L <sub>S</sub> +L <sub>D</sub> ) |      |      |       |   |

### Notes:

- ① Repetitive rating; pulse width limited by max. junction temperature. ( See fig. 11 )
- ② Starting T<sub>J</sub> = 25°C, L = 138μH  
R<sub>G</sub> = 25Ω, I<sub>AS</sub> = 62A. (See Figure 12)
- ③ I<sub>SD</sub> ≤ 62A, di/dt ≤ 207A/μs, V<sub>DD</sub> ≤ V<sub>(BR)DSS</sub>,  
T<sub>J</sub> ≤ 175°C
- ④ Pulse width ≤ 400μs; duty cycle ≤ 2%.
- ⑤ Calculated continuous current based on maximum allowable junction temperature. Package limitation current is 75A.
- ⑥ This is a typical value at device destruction and represents operation outside rated limits.
- ⑦ This is a calculated value limited to T<sub>J</sub> = 175°C.

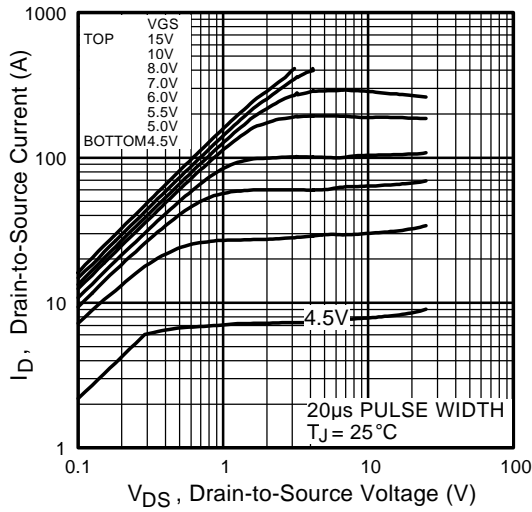


Fig 1. Typical Output Characteristics

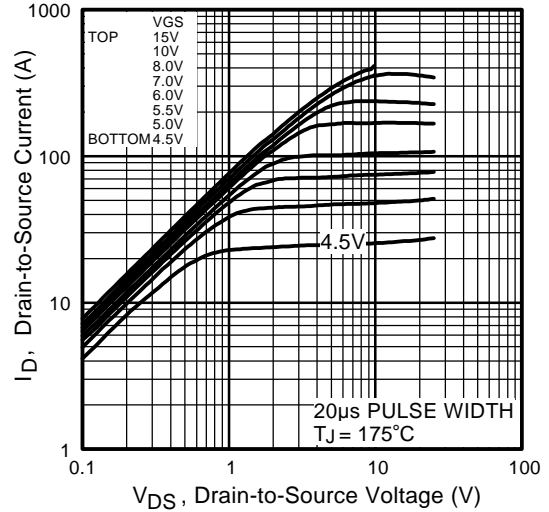


Fig 2. Typical Output Characteristics

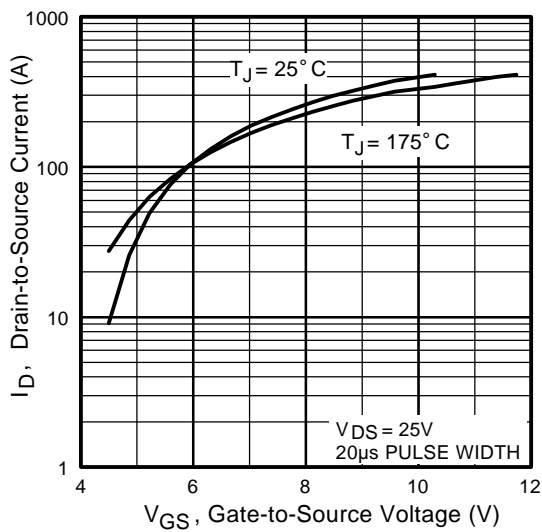


Fig 3. Typical Transfer Characteristics

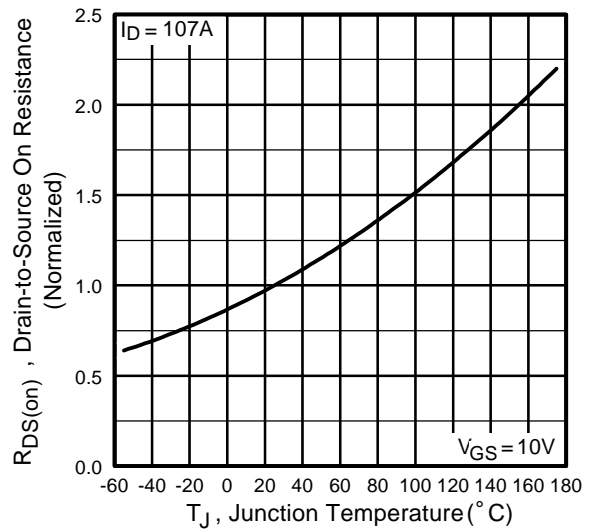
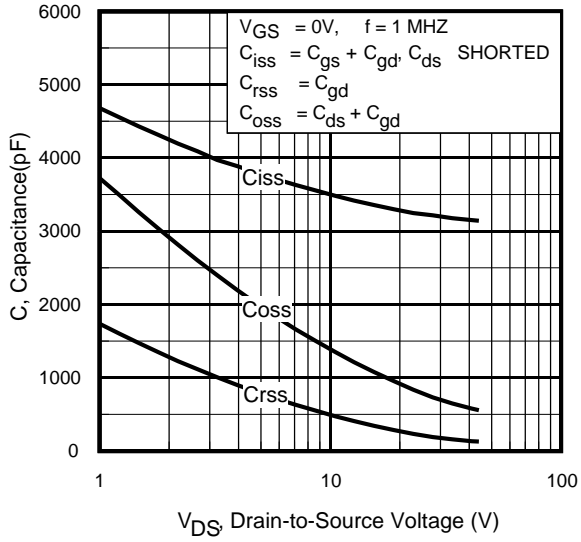
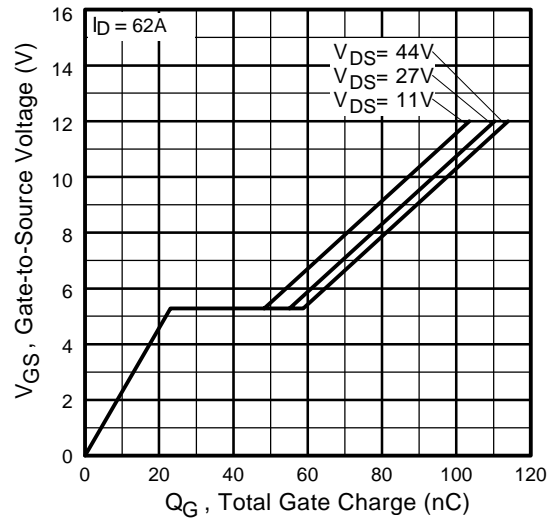


Fig 4. Normalized On-Resistance Vs. Temperature

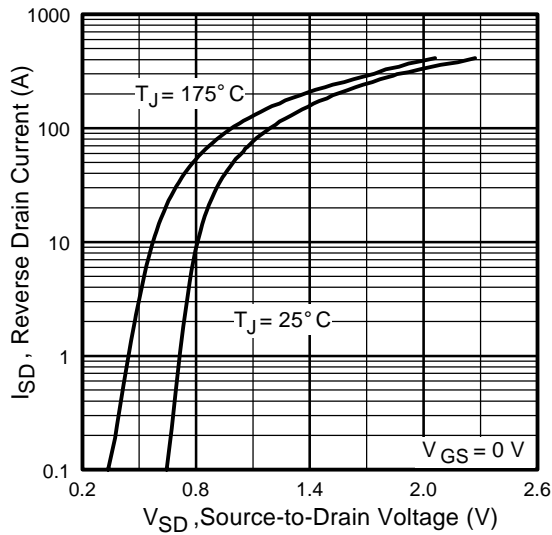
# IRF3205



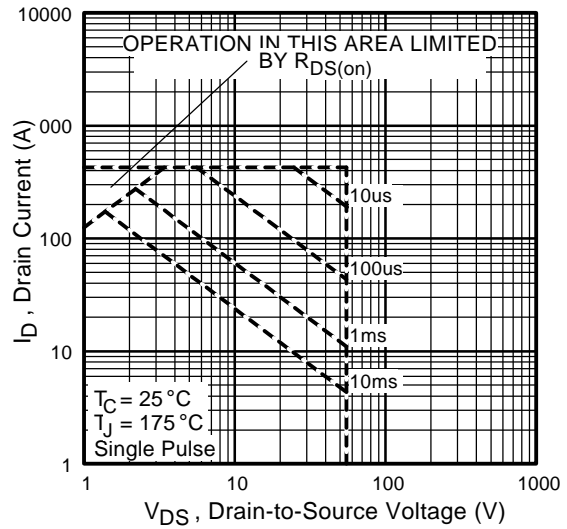
**Fig 5.** Typical Capacitance Vs. Drain-to-Source Voltage



**Fig 6.** Typical Gate Charge Vs. Gate-to-Source Voltage



**Fig 7.** Typical Source-Drain Diode Forward Voltage



**Fig 8.** Maximum Safe Operating Area

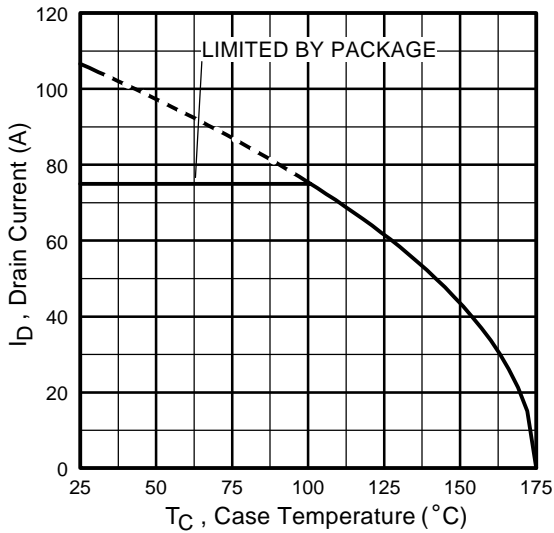


Fig 9. Maximum Drain Current Vs. Case Temperature

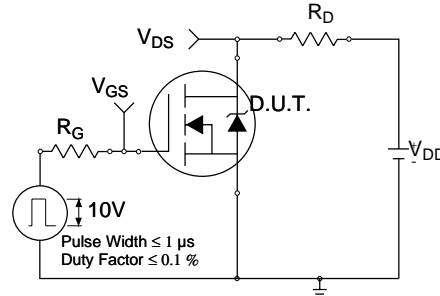


Fig 10a. Switching Time Test Circuit

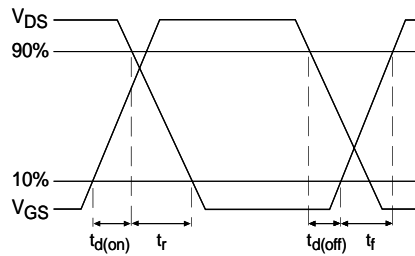


Fig 10b. Switching Time Waveforms

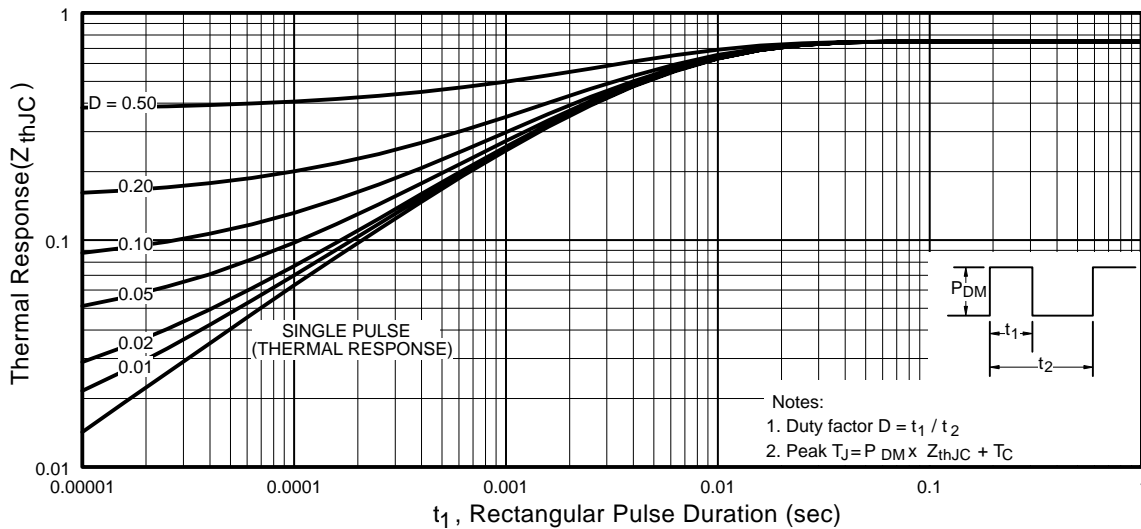
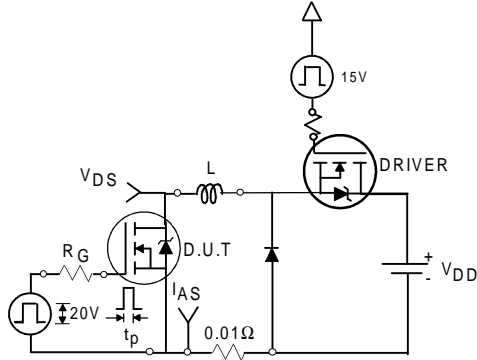


Fig 11. Maximum Effective Transient Thermal Impedance, Junction-to-Case

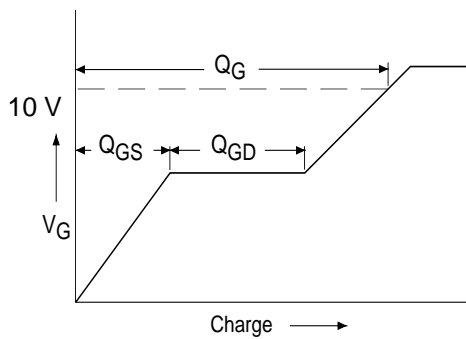
# IRF3205



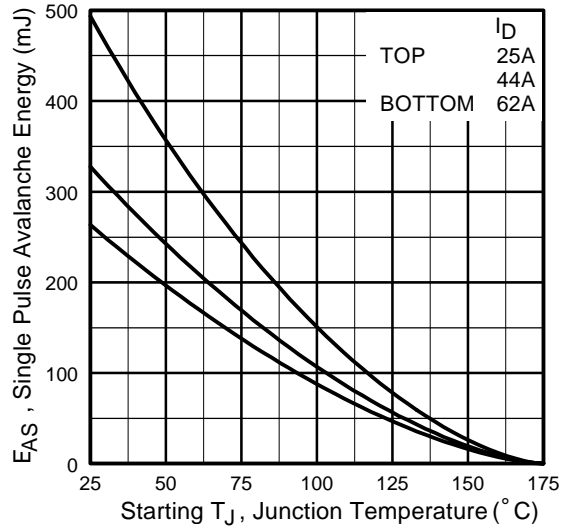
**Fig 12a.** Unclamped Inductive Test Circuit



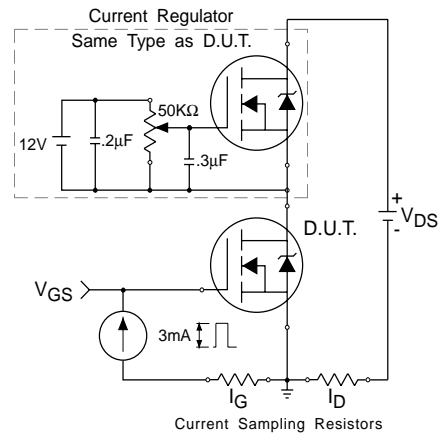
**Fig 12b.** Unclamped Inductive Waveforms



**Fig 13a.** Basic Gate Charge Waveform

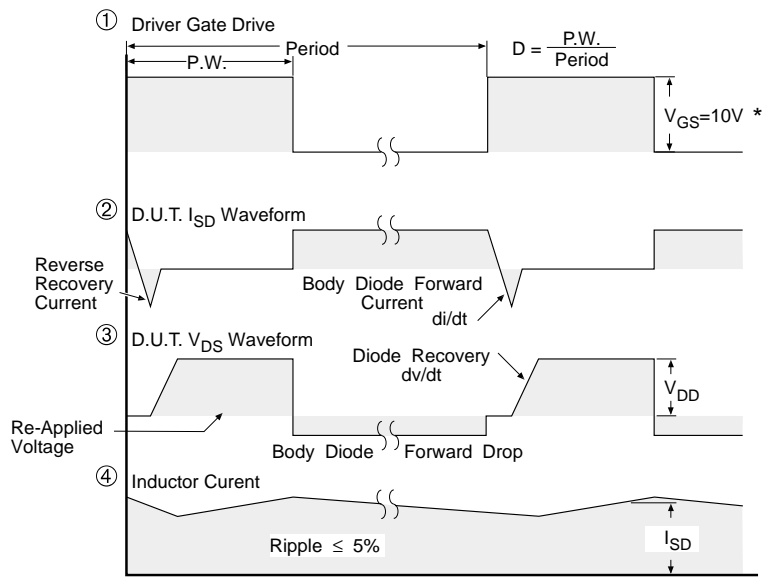
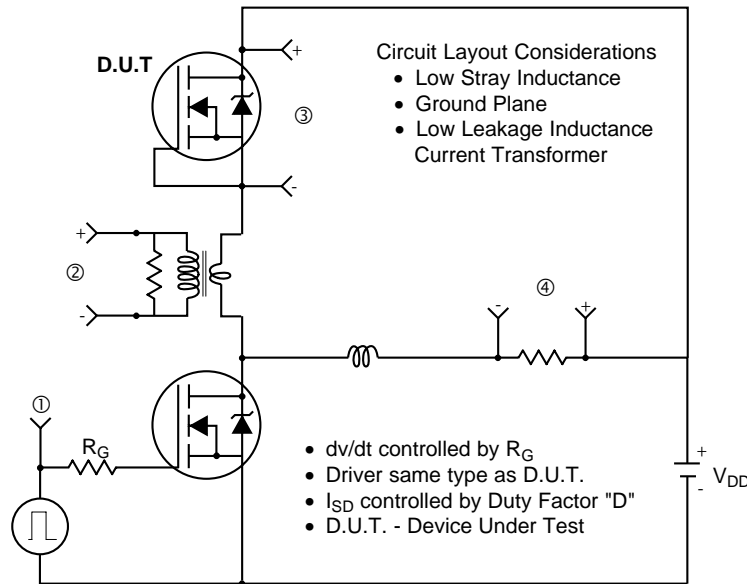


**Fig 12c.** Maximum Avalanche Energy Vs. Drain Current



**Fig 13b.** Gate Charge Test Circuit

**Peak Diode Recovery dv/dt Test Circuit**



\*  $V_{GS} = 5V$  for Logic Level Devices

**Fig 14.** For N-Channel HEXFETS

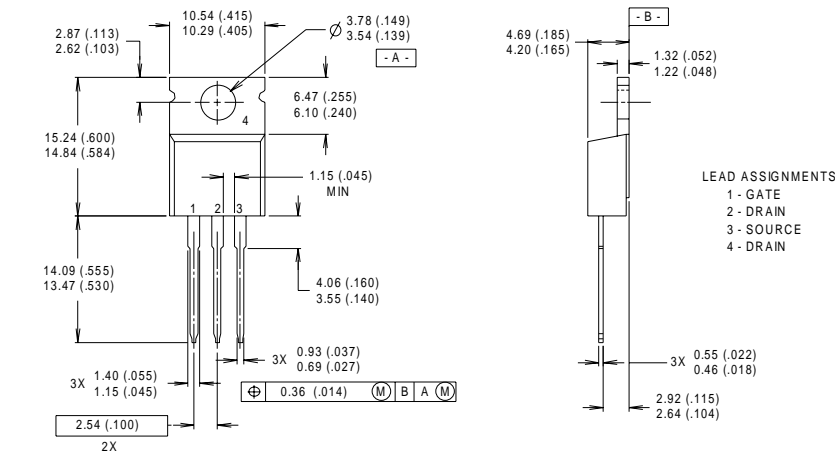
# IRF3205

## Package Outline

### TO-220AB Outline

Dimensions are shown in millimeters (inches)

International  
**IR** Rectifier

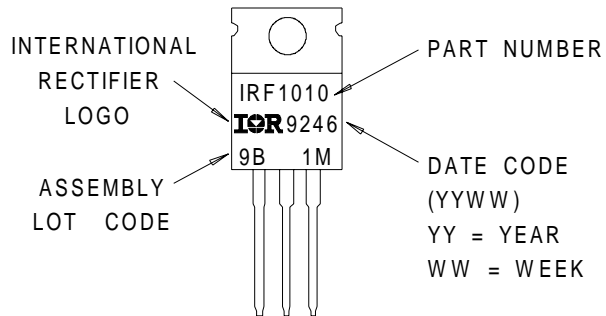


- NOTES:
- 1 DIMENSIONING & TOLERANCING PER ANSI Y14.5M, 1982.
  - 2 CONTROLLING DIMENSION : INCH
  - 3 OUTLINE CONFORMS TO JEDEC OUTLINE TO-220AB.
  - 4 HEATSINK & LEAD MEASUREMENTS DO NOT INCLUDE BURRS.

## Part Marking Information

### TO-220AB

EXAMPLE : THIS IS AN IRF1010  
WITH ASSEMBLY  
LOT CODE 9B1M



Data and specifications subject to change without notice.  
This product has been designed and qualified for the automotive [Q101] market.  
Qualification Standards can be found on IR's Web site.

International  
**IR** Rectifier

IR WORLD HEADQUARTERS: 233 Kansas St., El Segundo, California 90245, USA Tel: (310) 252-7105  
TAC Fax: (310) 252-7903

Visit us at [www.irf.com](http://www.irf.com) for sales contact information.01/01