

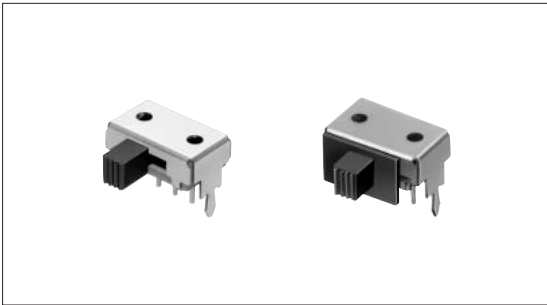
Slide Switch 2mm-travel Type

SSAA Series



A horizontal type with a stroke of 2mm.

- Detector
- Push
- Slide
- Rotary
- Encoders
- Power



Features

- 2mm-travel.
- Direct exposure of the knob is possible.

Applications

- For switching functions of car audio systems, LCD TVs portable audios, camcorders, and telephones

- Dual-in-line Package Type
- Multi Control Devices
- TACT Switch™
- Custom-Products
- Small size General Use type
- Big size General Use type
- Other Use type

Typical Specifications

Items		Specifications	
Rating (max.) / (min.) (Resistive load)		0.1A 30V DC/50μA 3V DC	
Contact resistance (Initial performance/After lifetime)		25mΩ max./65mΩ max.	
Operating force		2-positions	3-positions
		2.5±1.5N	b → a, c 3±1.5N a, c → b 2±1.5N
Operating life	Without load	10,000 cycles	
	With load	10,000 cycles (0.1A 30V DC)	

Products Line

Travel (mm)	Operating section directions	With/Without a cover	Length of operating section (mm)	Poles	Positions	Mounting method	Changeover timing	Soldering	Minimum packing unit (pcs.)	Products No.	Drawing No.
2	Horizontal	With	4	1	2	Press-in	Non shorting	Manual, Dip	100	SSAA110300	1
			8							SSAA110200	
			4		3					SSAA110600	2
			8	SSAA110500							
			4	2	2		SSAA120400			3	
			8				SSAA120200				
		4	3		Not specified	SSAA120700	4				
		8		SSAA120600							
		Without	4	1		2	SSAA110100			5	
				2			SSAA120300			6	

Note

Additional switches not included in the above list are also available. Contact us for details.

For other specifications, see P.150

Dimensions
Cover Integrated Type

Unit:mm

No.	Style	PC board mounting hole dimensions (Viewed from the direction A)
1	<p>1-pole, 2-positions</p>	
2	<p>1-pole, 3-positions</p>	
3	<p>2-poles, 2-positions</p>	
4	<p>2-poles, 3-positions</p>	

Detector

Push

Slide

Rotary

Encoders

Power

Dual-in-line
Package Type

Multi Control
Devices

TACT Switch™

**Custom-
Products**

Small size
General Use type

Big size
General Use type

Other Use type

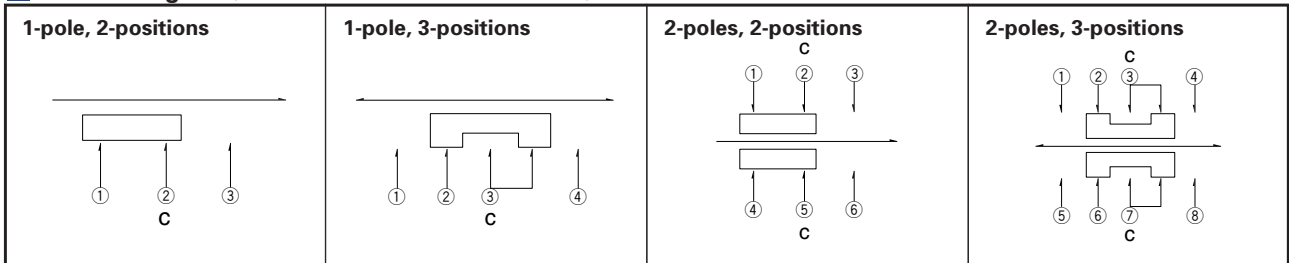
Dimensions

Without Cover Type

Unit:mm

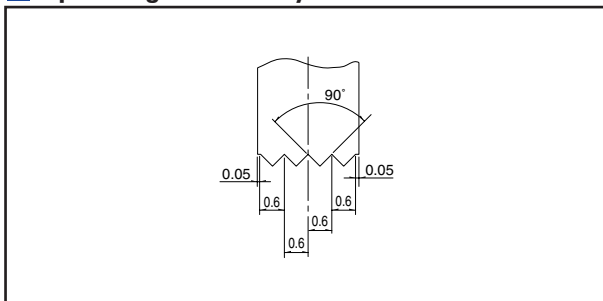
No.	Style	PC board mounting hole dimensions (Viewed from the direction A)
5	1-pole, 2-positions 	
6	2-poles, 2-positions 	

Circuit Diagram (Viewed from the Direction A)



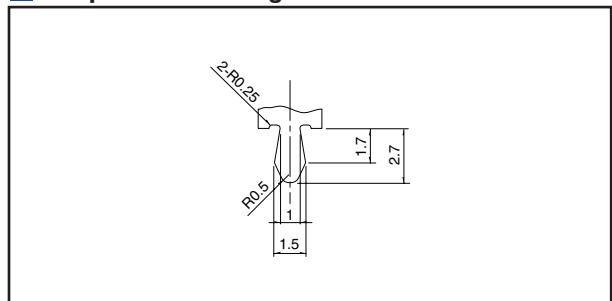
Operating Section Style

Unit:mm



Shape of Frame Leg

Unit:mm



Products Specifications

Items		Series						
		SSSB	SSAA	SSAC	SSAB	SSST		
Detector	Operating temperature range		-10°C to +60°C					
Push	Rating (max.) (Resistive load)		0.3A 30V DC	0.1A 30V DC	1mA 5V DC	0.1A 12V DC		
Slide	Electrical performance	Initial contact resistance	20mΩ max.	25mΩ max.	100mΩ max.	30mΩ max.	70mΩ max.	
		Insulation resistance	100MΩ min. 500V DC		100MΩ min. 100V DC	100MΩ min. 500V DC		
		Voltage proof	500V AC for 1 min.		100V AC for 1 min.	500V AC for 1 min.		
Rotary	Mechanical performance	Robustness of terminal	5N for 1 min.				3N for 1 min.	
Encoders		Robustness of actuator	Operating direction	50N	10N	5N	30N	20N
Power			Pulling direction	30N Static force			40N	10N
Dual-in-line Package Type	Multi Control Devices	Vibration		10 to 55 to 10Hz/min., the amplitude is 1.5mm for all the frequencies, in the 3 direction of X, Y and Z for 2 hours respectively				
TACT Switch™		Resistance to soldering heat	Manual soldering	350±10°C 3 ⁺ ½s		300±10°C 2s max.	350±10°C 3 ⁺ ½s	350±10°C 3s max.
			Dip soldering	260±5°C 10±1s		260±10°C 5±1s	260±5°C 10±1s	260±5°C 5 ⁺ ½s
			Reflow soldering					Please see P.161
Custom-Products	Durability	Operating life without load	10,000 cycles 40mΩ max.	10,000 cycles 45mΩ max.	10,000 cycles 200mΩ max.	1,000 cycles 60mΩ max.	10,000 cycles 100mΩ max.	
		Operating life with load Load : as rating	5,000 cycles 60mΩ max.	10,000 cycles 65mΩ max.		1,000 cycles 80mΩ max.	10,000 cycles 130mΩ max.	
Small size General Use type	Environmental performance	Cold	-20±2°C for 96h					
		Dry heat	85±2°C for 96h					
		Damp heat	40±2°C, 90 to 95%RH for 96h					
Big size General Use type								
Other Use type								