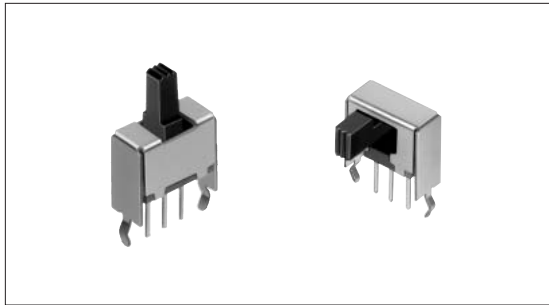


Slide Switch 1.9/2mm-travel, for Modulator Switching Type

SSAB Series



Switches with a body width of 4.2mm are superior in space saving.



Features

- Travels of 1.9mm and 2mm.

Applications

- For switching modulators in DVD players, LCD TVs, and TV game consoles

Typical Specifications

Items		Specifications
Rating (max.)/(min.) (Resistive load)		0.1A 12V DC/50 μ A 3V DC
Contact resistance (Initial performance/After lifetime)		30m Ω max./80m Ω max.
Operating force		Refer to the dimensions.
Operating life	Without load	1,000 cycles
	With load	1,000 cycles (0.1A 12V DC)

Products Line

Travel (mm)	Operating section directions	Length of operating section (mm)	Poles	Positions	Mounting method	Changeover timing	Soldering	Minimum packing unit (pcs.)	Products No.	Drawing No.
1.9	Vertical	3	1	2	Snap-in (t1.2)	Non shorting	Manual, dip	100	SSAB010200	1
		6							SSAB010100	
2	Horizontal	5							SSAB110100	2

Note

Additional switches not included in the above list are also available. Contact us for details.

Detector

Push

Slide

Rotary

Encoders

Power

Dual-in-line
Package Type

Multi Control
Devices

TACT Switch™

Custom-
Products

Small size
General Use type

Big size
General Use type

Other Use type

For other specifications, see P.150

Slide Switch

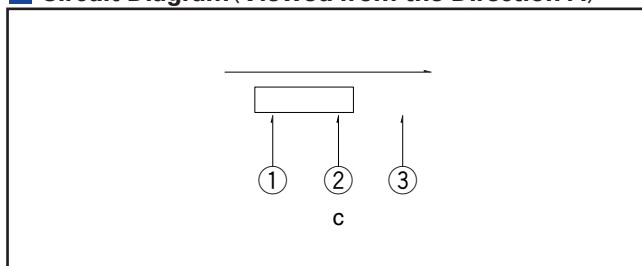
1.9/2mm-travel, for Modulator Switching Type | SSAB Series

Dimensions

Unit:mm

No.	Style	PC board mounting hole dimensions (Viewed from the direction A)
1	<p>Vertical</p> <p>Operating force : 4±2N</p>	
2	<p>Horizontal</p> <p>Operating force : 3.5±2N</p>	

Circuit Diagram (Viewed from the Direction A)



Products Specifications

Items		Series	SSSB	SSAA	SSAC	SSAB	SSST	
Detector	Operating temperature range		-10°C to +60°C					
Push	Rating (max.) (Resistive load)		0.3A 30V DC	0.1A 30V DC	1mA 5V DC	0.1A 12V DC		
Slide	Electrical performance	Initial contact resistance	20mΩ max.	25mΩ max.	100mΩ max.	30mΩ max.	70mΩ max.	
		Insulation resistance	100MΩ min. 500V DC		100MΩ min. 100V DC	100MΩ min. 500V DC		
		Voltage proof	500V AC for 1 min.		100V AC for 1 min.	500V AC for 1 min.		
Rotary	Robustness of terminal		5N for 1 min.				3N for 1 min.	
Encoders	Mechanical performance	Robustness of actuator	Operating direction	50N	10N	5N	30N	20N
Power			Pulling direction	30N Static force			40N	10N
Dual-in-line Package Type		Vibration		10 to 55 to 10Hz/min., the amplitude is 1.5mm for all the frequencies, in the 3 direction of X, Y and Z for 2 hours respectively				
Multi Control Devices	Resistance to soldering heat	Manual soldering	350±10°C 3 ⁺ ₁ s		300±10°C 2s max.	350±10°C 3 ⁺ ₁ s	350±10°C 3s max.	
TACT Switch™		Dip soldering	260±5°C 10±1s		260±10°C 5±1s	260±5°C 10±1s	260±5°C 5 ₁ s	
Custom-Products		Reflow soldering	Please see P.161					
Durability	Operating life without load		10,000 cycles 40mΩ max.	10,000 cycles 45mΩ max.	10,000 cycles 200mΩ max.	1,000 cycles 60mΩ max.	10,000 cycles 100mΩ max.	
	Operating life with load Load : as rating		5,000 cycles 60mΩ max.	10,000 cycles 65mΩ max.		1,000 cycles 80mΩ max.	10,000 cycles 130mΩ max.	
Small size General Use type	Environmental performance	Cold	-20±2°C for 96h					
		Dry heat	85±2°C for 96h					
		Damp heat	40±2°C, 90 to 95%RH for 96h					
Big size General Use type								
Other Use type								