



SANKOI (GZ) ELECTRONICS CO., LTD

广州森德意电子有限公司

SPECIFICATION FOR APPROVAL

承认书

CUSTOMER/客户: 厦门海菱电子

PART NO./物料号:

MODEL NO./产品型号: SFP1942E61B

PRODUCT NO./产品编号: SK0911-001

MARK/修改标记	REVISED CONTENT/修改内容	APPROVED & DATE/认可及日期

AUTHORIZED SIGNATURE & COMPANY CHOP/客户认可及签回	

DATE/日期	2010-6-28	EDITION/版本	A-01	PAGE/页码	1 OF 5
DESIGN/设计	胡明	CHECK/审核	李涛	APPROVED/批准	付镜宁



SANKOI(GZ) ELECTRONICS CO.,LTD / 广州森德意电子有限公司
 ADD: NO.103 Haijing Road, Nansha District, Guangzhou, P.R.China./ 公司地址: 广州市南沙区海景路 103 号
 Tel: 13662687834 Fax: 020-61903697 P.C.: 511948 E-mail: alexfjn@yahoo.com.cn
 Factory Add:4F,building No.7, Wandi industry garden, Xi Keng Lao Cun, Guanlan town, Baoan district,Shenzhen,P.R.China.
 工厂地址: 深圳市宝安区观兰镇茜坑老村万地工业园 7 栋 4 楼 Tel.: 0755-29550887 Fax.: 0755-29550816
 (深圳市永翔科技电子有限公司)

SPECIFICATION

Page2/5

TYPE:SFP1942E61B	PCB TYPE: SFP1942E61B	SPEC NO: SK0911-001
------------------	-----------------------	---------------------

1. APPLICATION

1-1 THIS DC TO AC INVERTER IS USED FOR LIGHTING THE LCD PANEL WITH FOUR CCFLS(COLD-CATHODE FLUORESCENT LAMP).AND THE INPUT VOLTAGE IS D.C: 12V±5%.

1-2 APPLICABLE LOAD:HSD190MGW1 (HANNSTAR), HT190E01-100 (BOE),
LTM190M2-L01 (SAMSUNG) MT220WW01, & OTHER LOW PROFILE APPLICATION

1-3 FEATURES

- * DIMMING CONTROL ;
- * ENABLED & DISABLED CONTROL;
- * OPEN LAMP PROTECTION;
- * CONSTANT OPERATING FREQUENCY;
- * OPTIMIZED SOFT-START FUNCTION & HIGH EFFICIENCY.

2. GENERAL CONDITION

2-1. OPERATING AMBIENT TEMPERATURE- 0°C~50°C

2-2. OPERATING HUMIDITY- 95%MAX R.H

2-3. STORAGE AMBIENT TEMPERATURE- -10°C~65°C

2-4. STORAGE HUMIDITY- 95%MAX R.H

3.CONNECTOR PIN ASSIGNMENT

3.1. INPUT CONNECTOR TERMINAL (6PIN SPACE BETWEEN2.0MM VERTICAL 180° DIP)

PIN	SYMBOL	FUNCTION
1,2	VIN	POWER SUPPLY (RANGED FROM 11.4V TO 12.6V; 12V TYP.)
3	ADJ	BRIGHTNESS CONTROL (0V: MAX. BRIGHTNESS; 5V: MIN. BRIGHTNESS)
4	ENA	OFF: D.C.0V ~D.C.1.0V; ON:D.C.3.5V~D.C.5V
5,6	GND	POWER SUPPLY GROUND

3-2. OUTPUT CONNECTOR TERMINAL (2PIN SPACE BETWEEN3.5MM HORIZONTAL SMD)

PIN	SYMBOL	FUNCTION
1	HV	HIGH VOLTAGE OUTPUT
2	LV	LOW VOLTAGE OUTPUT (GND SIDE)

4.WEIGHT

APPROXIMATELY: ≈42g.

SANKOI (GZ) ELECTRONICS CO., LTD / 广州森德意电子有限公司

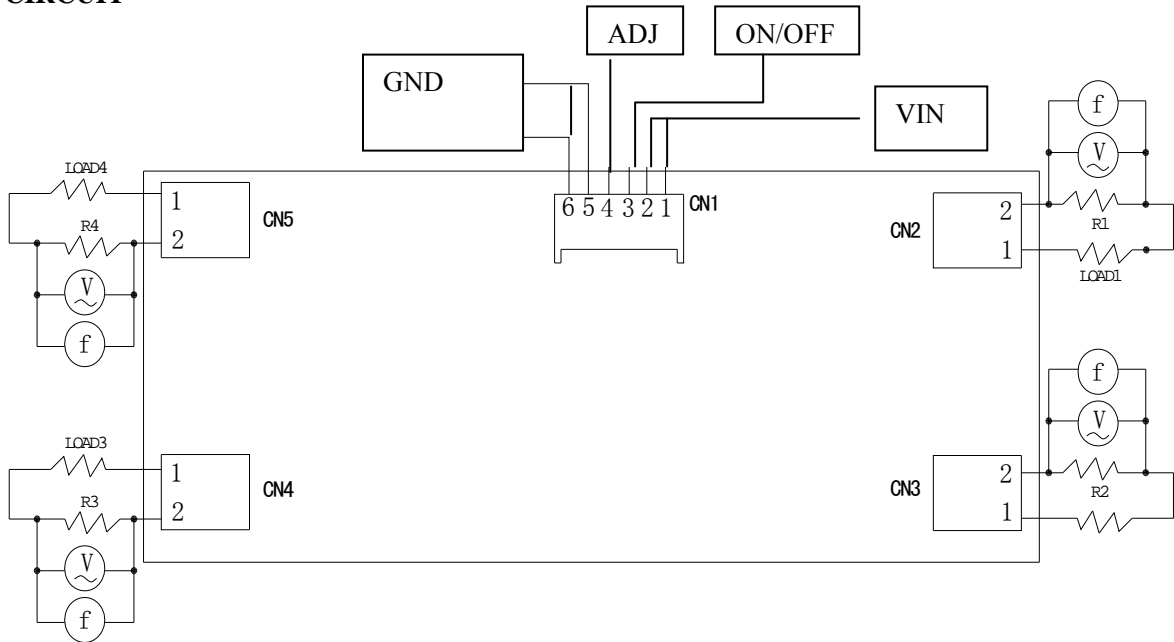
Tel. No. :13662687834

Email:alex-fjn@yahoo.com.cn

SPECIFICATION

TYPE:SFP1942E61B	PCB TYPE: SFP1942E61B	SPEC NO: SK0911-001
------------------	-----------------------	---------------------

5.TEST CIRCUIT



$V_{in}=12V$ $LOAD1,2,3,4=LCD$ PANEL $R1,2,3,4=1.0K\Omega$

TESTING INSTRUMENTS:

V_{in} :REGULATED DC POWER SUPPLY:WYK-6030

(V) :DIGITAL MULTI-METER:ESCORT 3136A

(f) :FREQUENCY COUNTER:ESCORT 3136A

(A) :DC AMPERE-METER:ESCORT 3136A

(V) :TRUE R.M.S. AC VOLTIMETER:ESCORT 3136A

6.ELECTRICAL SPECIFICATIONS

PARAMETERS	SYMBOL	CONDITIONS				SPECIFICATIONS			UNIT	NOTE
		V_{in} (V)	V_{adj} (V)	T_a (°C)	R_L (K Ω)	MIN.	TYP.	MAX		
INPUT CURRENT	I_{in}	11.4~12.6	0~5	25°C	LCD PANEL	-	2.5	2.8	A (D.C).	12V TYP.
OUTPUT CURRENT	I_{out}	11.4~12.6	0~5	25°C	LCD PANEL	6.8	7.5	8.0	mArms	$V_{on/off}=5V$ $V_{adj}=0V$
						-	3.5	4.0		$V_{on/off}=5V$ $V_{adj}=5V$
OPERATING FREQUENCY	F	11.4~12.6	0	25°C	LCD PANEL	45	50	55	kHz	12V TYP.
OPEN VOLTAGE	V_{open}	12.0	0	25°C	NO LOAD	-	1600	-	Vrms	REF.

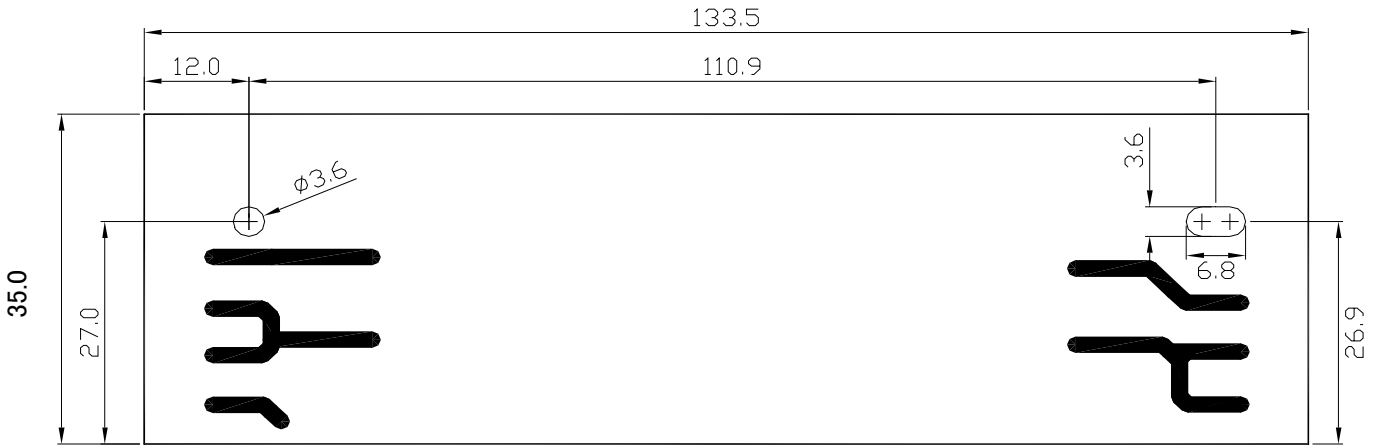
SPECIFICATION

TYPE:SFP1942E61B	PCB TYPE: SFP1942E61B	SPEC NO: SK0911-001
------------------	-----------------------	---------------------

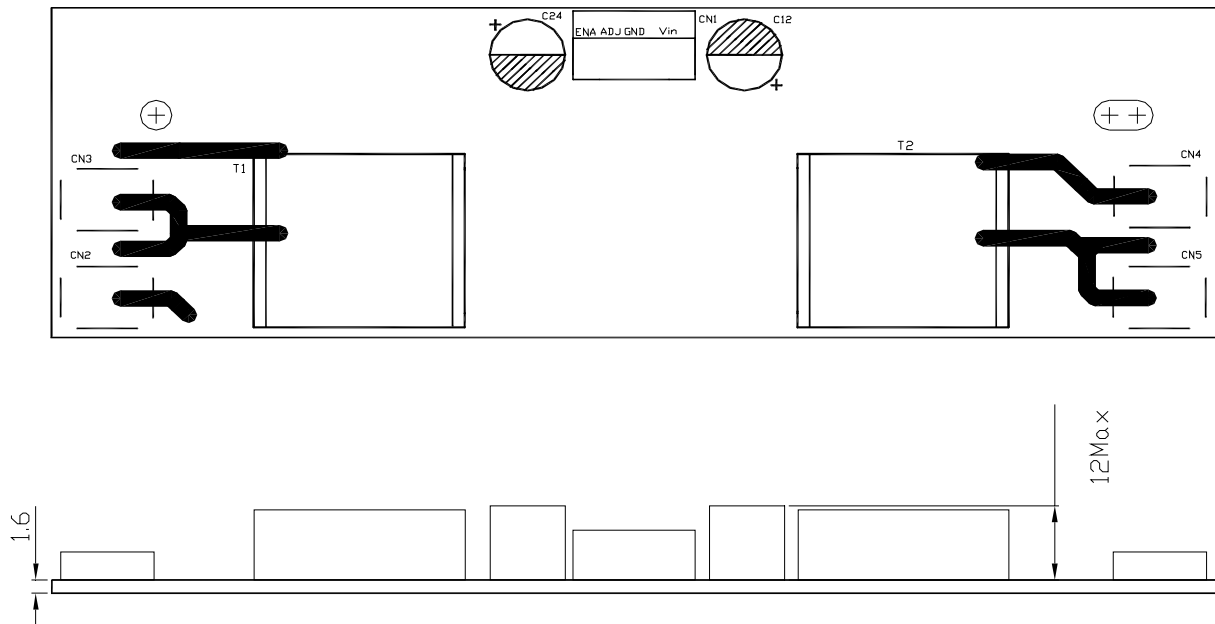
* LCD LOAD : MT220WW01

7. PCB OUTLINE DIMENSIONS(UNIT:mm)

TOP VIEW



MOUNT VIEW



TOLERANCES

$0 < L \leq 35 \quad \pm 0.3$
 $35 < L \leq 133.5 \quad \pm 0.8$