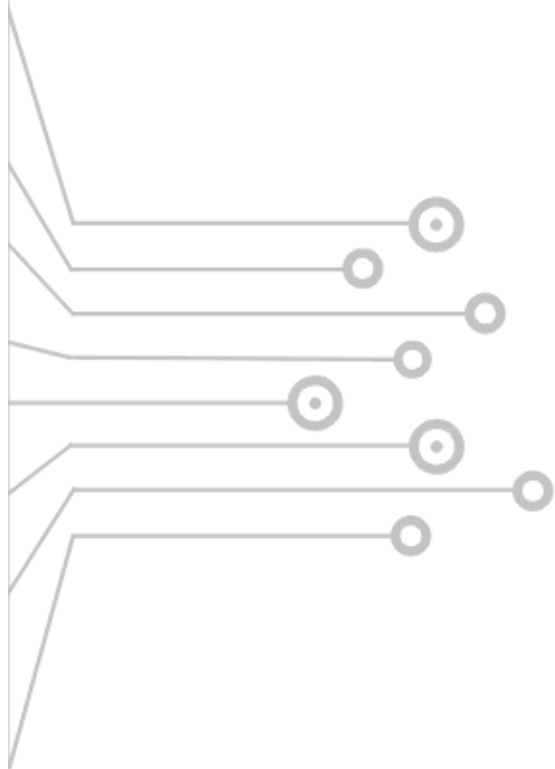




继电器插座

Socket & Module Series



● 认证事项 ●
Certification





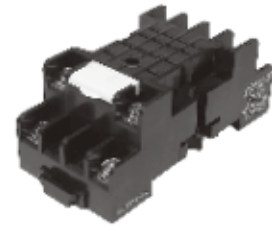
KPY2



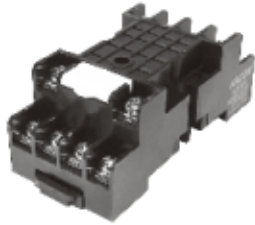
KPY4



KMY2



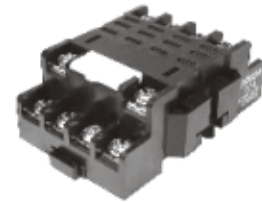
KMY4



KLY2



KLY4



KTF14A



KF083A



KF113A



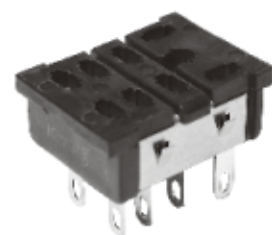
KPZ2



KPZ3



KT08





KT08-0



KY08



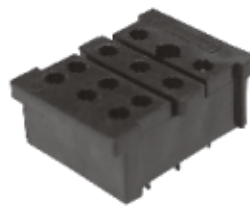
KY08-02



KY11



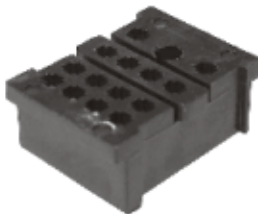
KY11-02



KY14



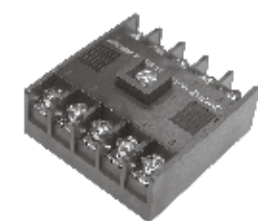
KY14-02



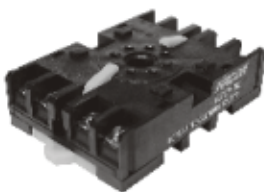
K2BF08



K2BF11



K2CF08



K2CF08K



TAS



TRS



KPY-M



KPY-M1 24VDC/AC
KPY-M2 110VDC/AC
KPY-M3 220VDC/AC

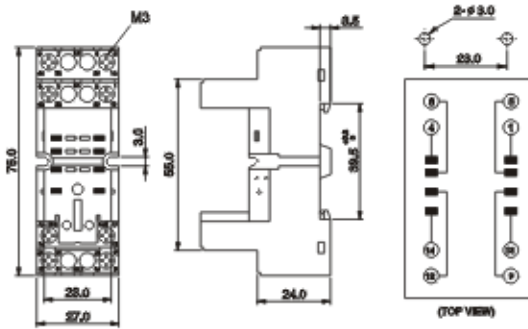
压敏电阻 模块
Varistor

KPY-D



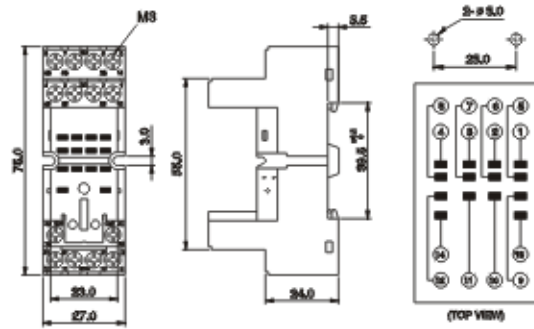
6~250VDC
二极管 模块
Diode

KPY2



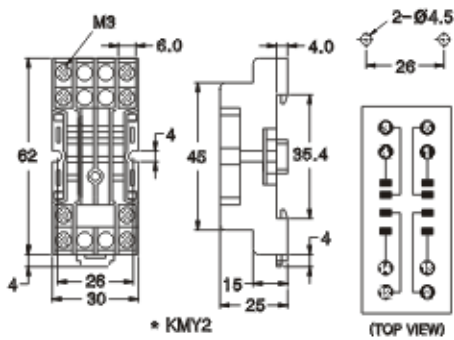
Torque: 0.5N · m

KPY4



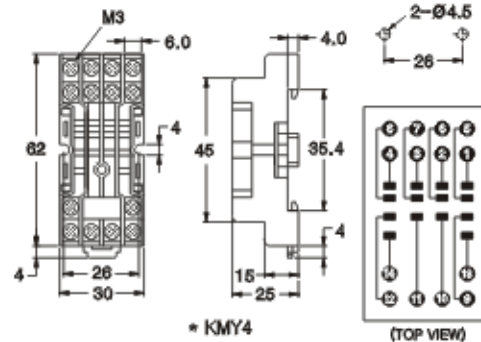
Torque: 0.5N · m

KMY2



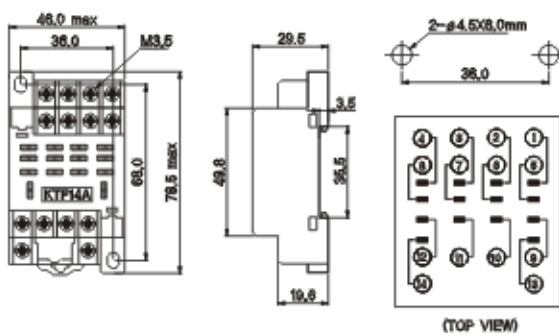
Torque: 0.5N · m

KMY4



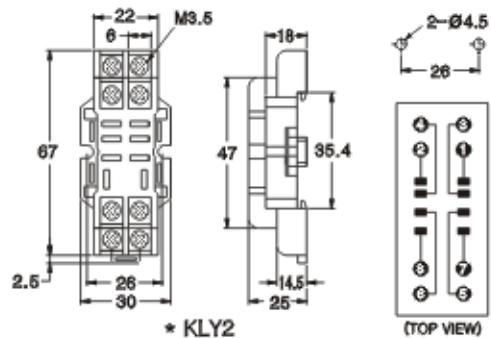
Torque: 0.5N · m

KTF14A



Torque: 0.8N · m

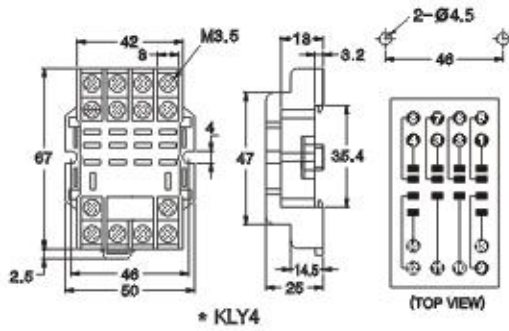
KLY2



Torque: 0.8N · m

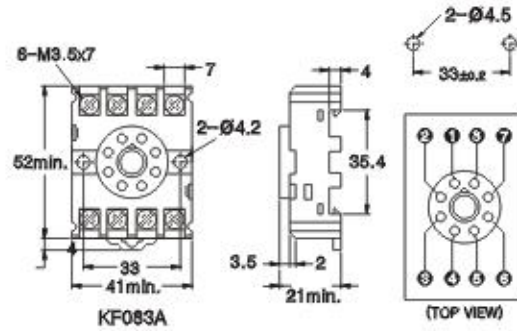
※如因提高质量而进行产品更改，恕不另行通知。

KLY4



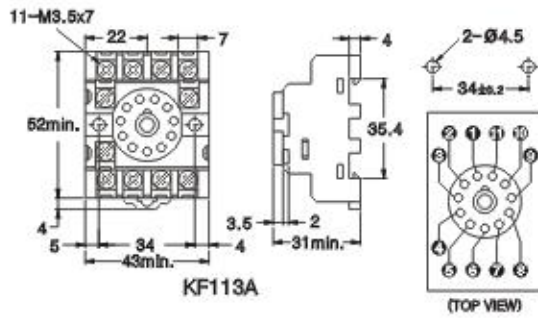
Torque: 0.8N · m

KF083A



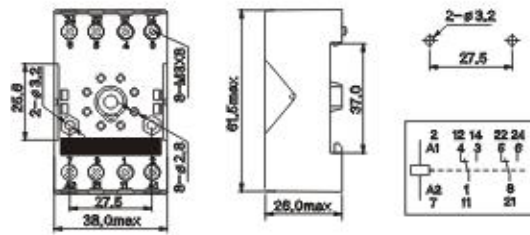
Torque: 0.8N · m

KF113A



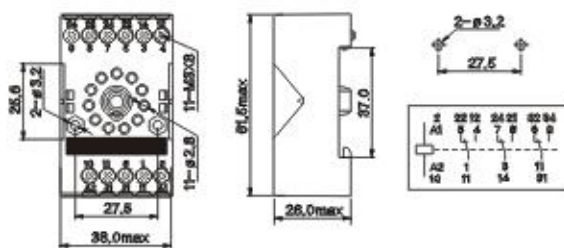
Torque: 0.8N · m

KPZ2



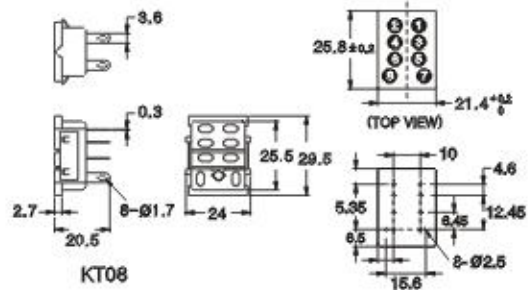
Torque: 0.8N · m

KPZ3



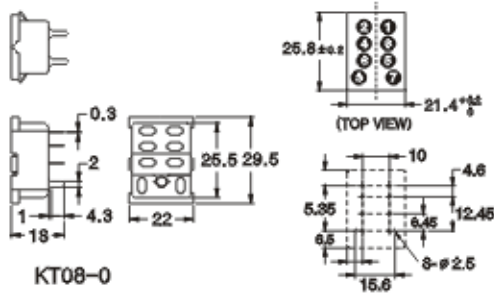
Torque: 0.5N · m

KT08



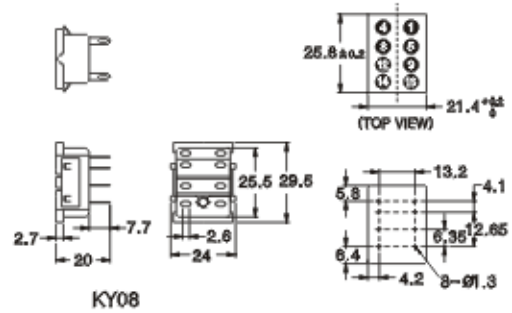
11

KT08-0



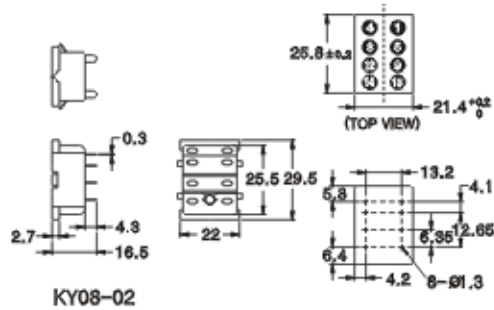
KT08-0

KY08



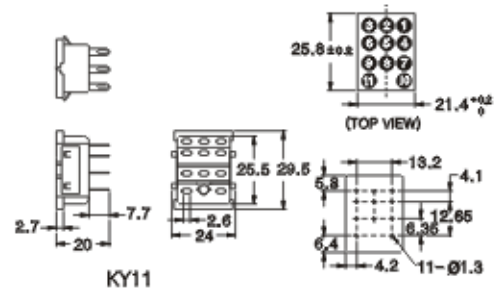
KY08

KY08-02



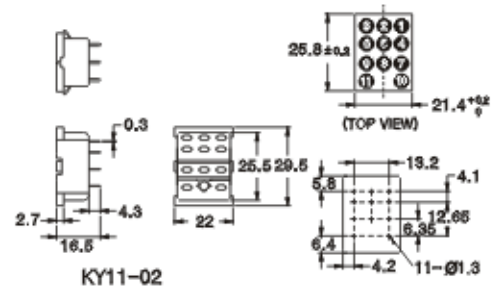
KY08-02

KY11



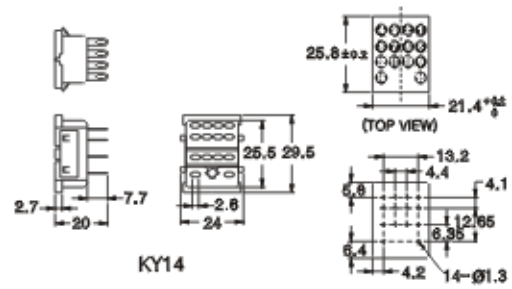
KY11

KY11-02



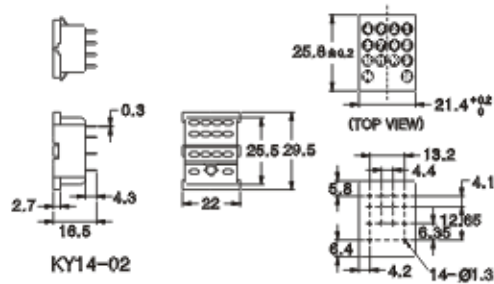
KY11-02

KY14



KY14

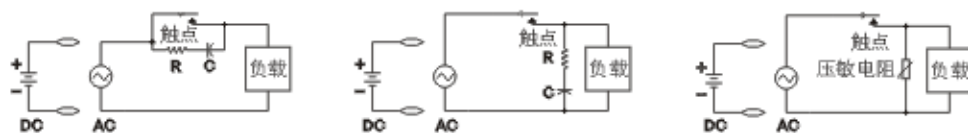
KY14-02



KY14-02

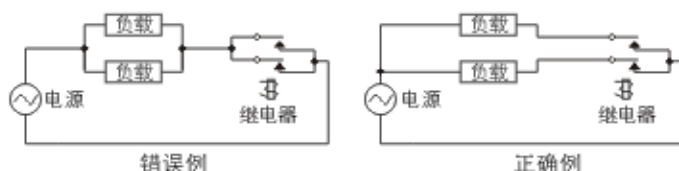
使用注意事项 Pre-Caution

- 继电器使用在感性负载条件下，应增设触点保护电路确保更能长期性的使用



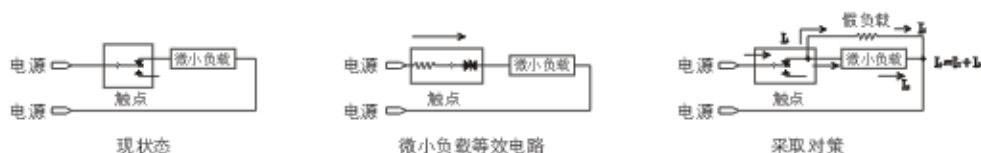
- 继电器内置浪涌吸收装置时DC是设置续流二极管，AC是R-C缓冲吸收电路。
DC 时内置二极管，在接线时需要注意电源的极性

- 多个负载使用同一个电源时，各负载应独立使用每个继电器触点。
- 触点并联使用情况下由于触点发生不不同容易造成产品损坏。



关于开闭微小负载

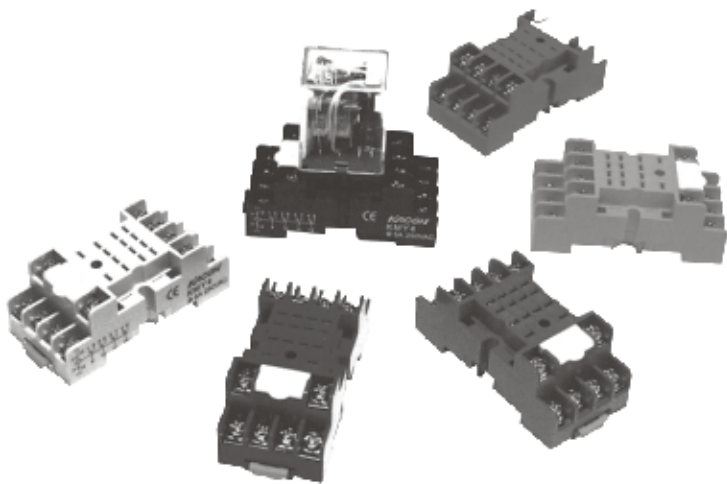
- 继电器触点开闭非常微小的电流负载时，如果按照一般负载使用，会产生接触不良的情况。
为了可靠的开闭微小负载需要在负载的两端增加假负载，请参考下图所示进行设置。



KMY4 Series

■ 产品特点

- 升级产品!
- 六种外观颜色
 - 用于控制盘内多列安装时功能区分，便于检测维护，防止接线错误。
 - 使控制盘美观化，时尚化。
- 端子部位内置强力螺母
 - 螺丝连接强度提高，接线稳定安全。
- 标记板和浪涌抑制器安置槽
 - 实用新型专利技术。
 - 电路功能标记容易。
 - 安置槽可方便连接DIODE或VDR，便捷性、经济性。
- 获得CE认证。

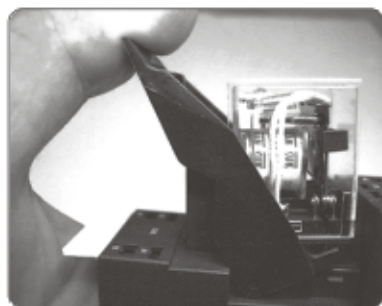
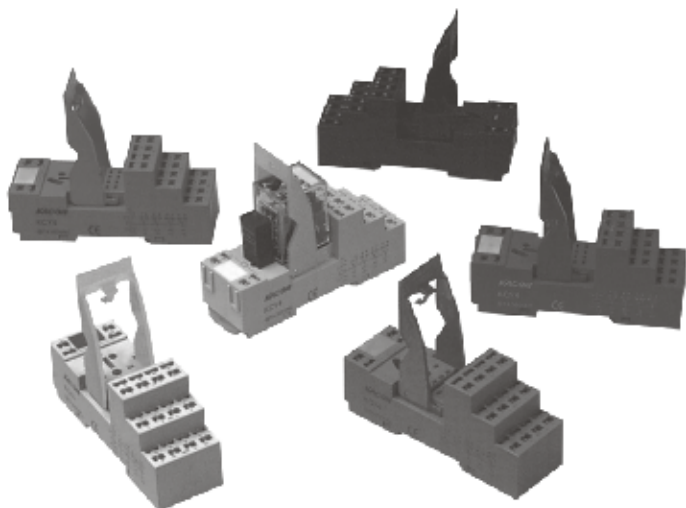


11

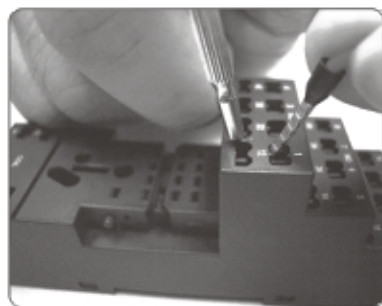
KCY4 Series

■ 产品特点

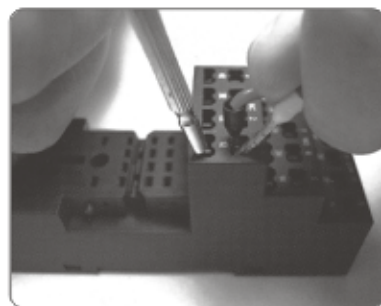
- 新概念控制继电器插座!
 - 无螺丝使用的新类型，弹簧笼式接线端子。
- 六种外观颜色
 - 用于控制盘内多列安装时功能区分，便于检测维护，防止接线错误。
 - 使控制盘美观化，时尚化。
- 每个端子设置2个电线连接孔
 - 用于公共接线端子时极其便捷（符合欧洲CE标准）。
- 可选配LED指示灯模块和浪涌吸收抑制模块。
- 继电器拆卸工具和挂钩一体化设计，牢固稳定，拆装方便快捷。
- 获得CE认证。



一体化继电器卡扣和拆卸工具，使继电器安装稳定牢固，拆装方便快捷



弹簧式接线端子
无螺丝使用



每个端子设置2个电线连接孔
用于进行公共端子接线
(符合欧盟CE标准)