

**Typical Applications**

- Automotive
- Instrumentation
- Industrial control
- Medical
- Military

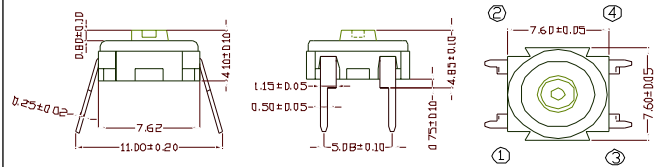


**Switching function : off - mom**

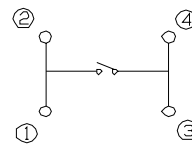
**Specifications :**

- ◆ Contact Rating :24V DC, 20mA; min. 0.5W
- ◆ Contact Resistance :<100mΩ
- ◆ Insulation Resistance :>1000MΩ at 100VDC
- ◆ Dielectric Strength:250V, 50Hz for the duration of 1 minute
- ◆ Operation Temperature :-25℃ to +85℃
- ◆ Mechancial Life :minimum 1,000,000 operations
- ◆ Push Force :4N±0.5N
- ◆ Contacts :Silver-Plated over Nickel barrier
- ◆ Terminals :PC Terminals, Gold-Plated over Nickel barrier
- ◆ Material :case : Thermoplastic, UL 94V-0, Blue (THT type),  
case : Thermoplastic, UL 94V-0, Black (SMD type)  
button : Silicon.  
cap : PC, UL 94V-2
- ◆ Mounting :on pc-board
- ◆ Soldering condition :auto-soldering max: 5 sec, 270℃  
reflow-soldering-max : 60sec. 200℃ /max 15 sec, 260℃

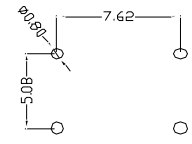
**TE 0**



**CIRCUIT DIAGRAM**



**DRILLING PLAN**



**How to order**

TE 0

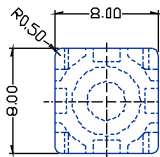


TES 0

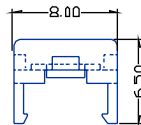
CAP

COLOR

TE 0: Thru hole  
TES 0:SMD



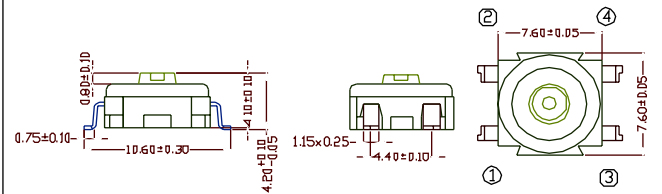
**A (SQUARE)**



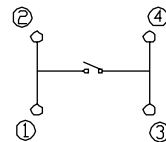
**B (ROUND)**

- 00 Grey
- 01 Dark Grey
- 02 Black
- 03 Red

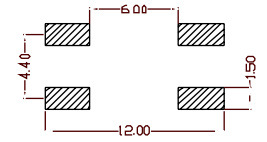
**TES0**



**CIRCUIT DIAGRAM**

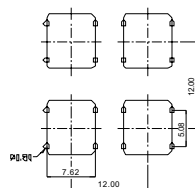
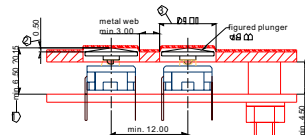


**SMD SOLDERING PAD**



**TE Typical system assembly with plunger under overlay**

Solder terminal for PCB.



SMD gullwing terminal

