

Technical Data

Material:

Contact Material: Brass

Insulator Material: Black Polyester (UL94V-0)

Standard: PBT

Electrical:

Current rating: 3Amp

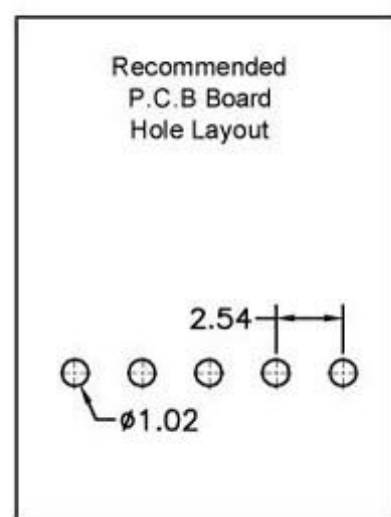
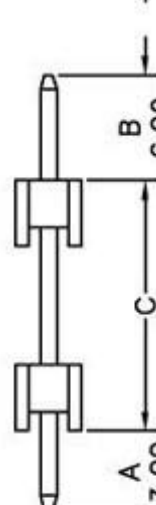
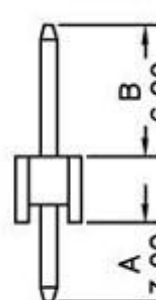
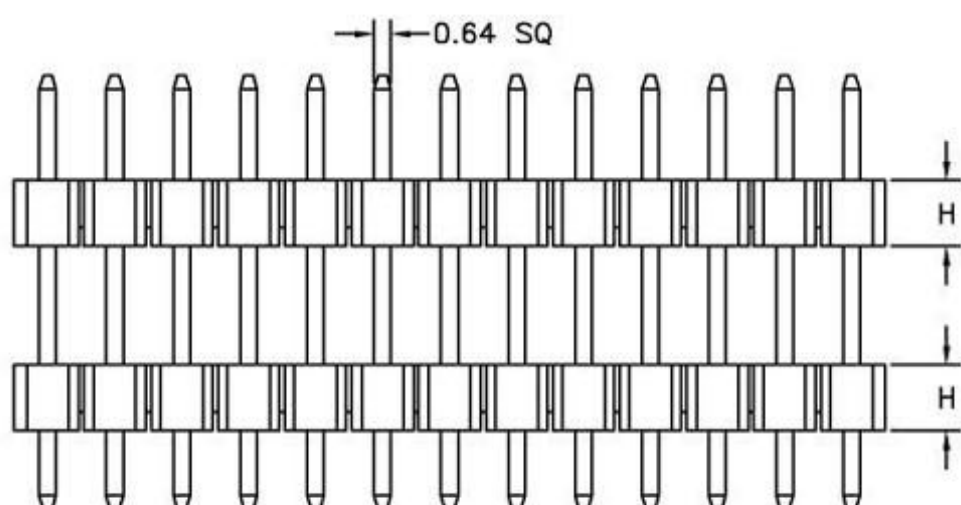
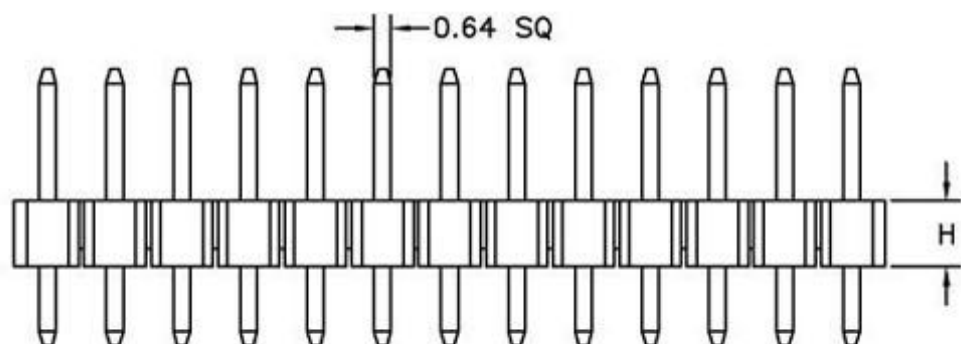
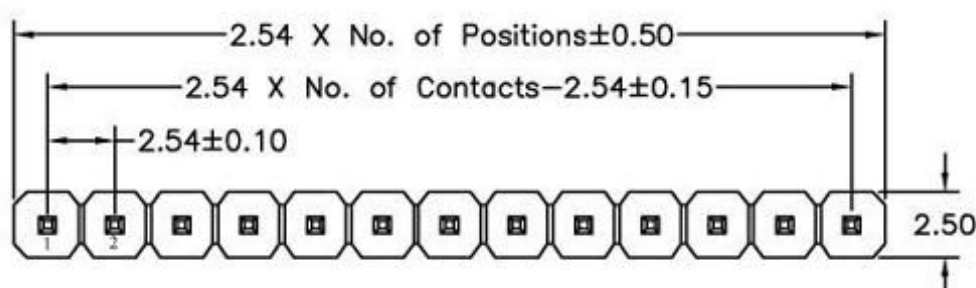
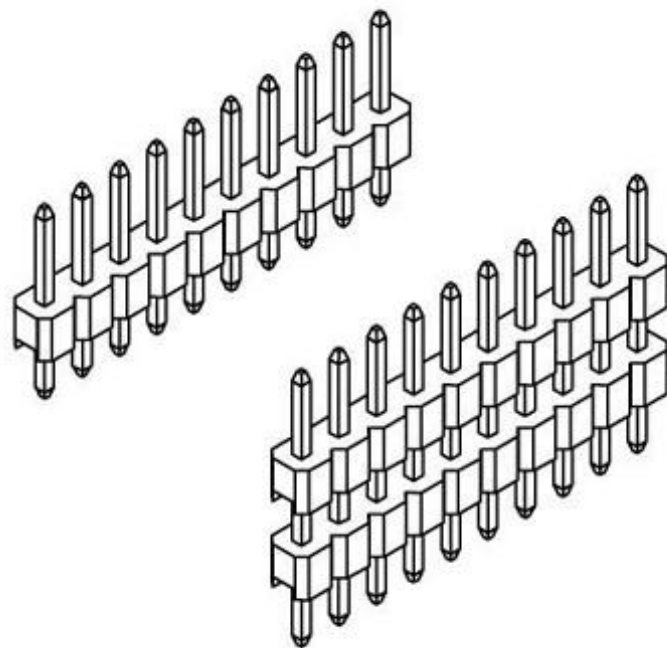
Contact resistance: 20mΩ

Insulation resistance: 1000MΩ

Withstanding Voltage: 550V AC

Mechanical:

Operating temperatures: -40



MEA1

X

P

X

X

X

X

X

No. of Positions
Per Row 01 thru
40

High Option
A H=1.7mm
B H=2.5mm

Plating Option
A G/F
B Au3
C Au5
D Au10
E Au15
S Special

Insulator Material
Option
A BK-PBT
B BK-PA66
C BK-PA6T
D BK-PA46
E BK-LCP
S Special

Insulator Quantity
1 1PCS
2 2PCS
3 3PCS
S Special

Pin Length
(A/B/C)
01-99

Technical Data

Material:

Contact Material: Brass

Insulator Material: Black Polyester (UL94V-0)

Standard: PBT

Electrical:

Current rating: 3Amp

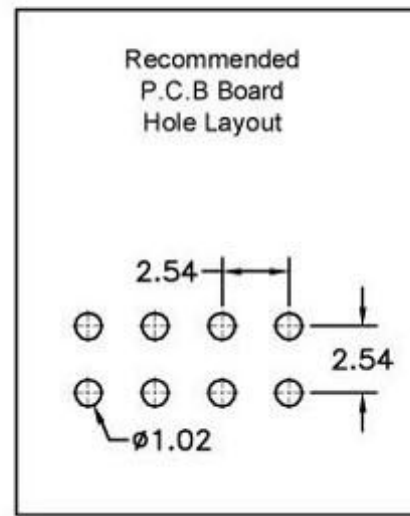
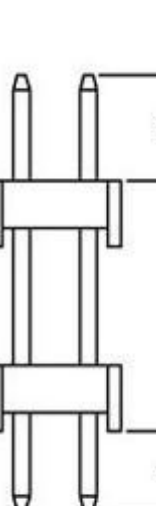
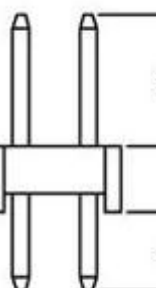
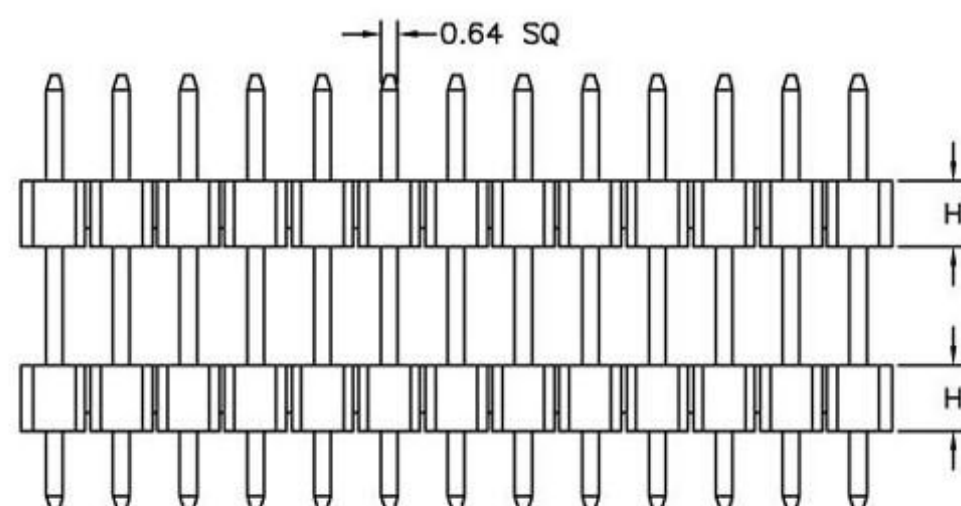
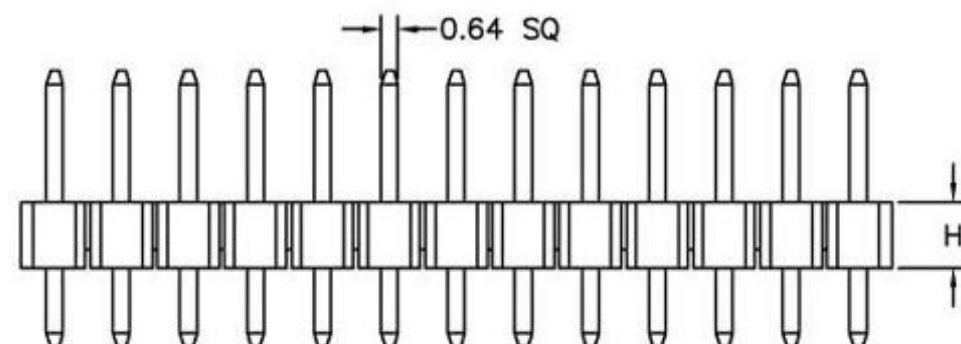
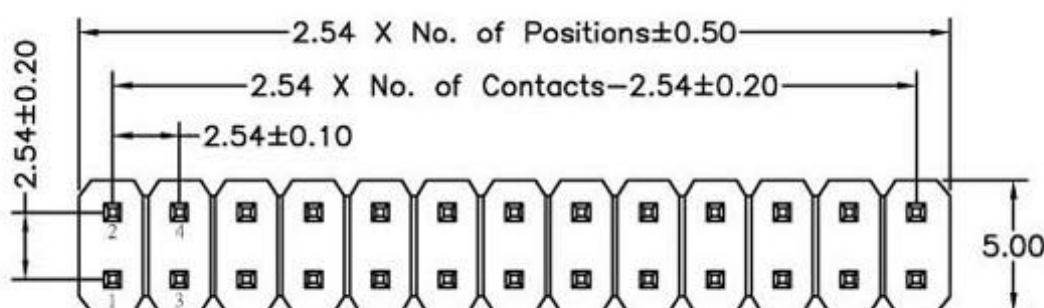
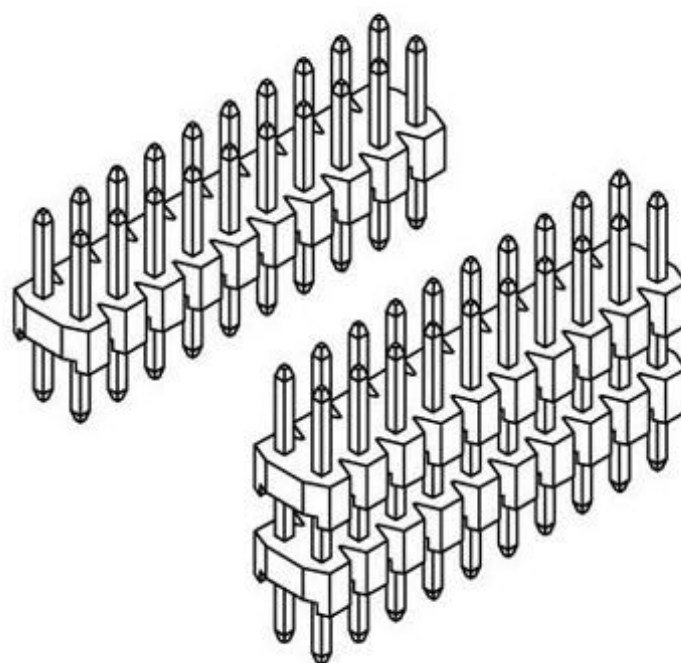
Contact resistance: 20mΩ

Insulation resistance: 1000MΩ

Withstanding Voltage: 550V AC

Mechanical:

Operating temperatures: -40



MEA2

X

P

X

X

X

X

X

No. of Positions
Per Row 01 thru
40

High Option
A H=1.5mm
B H=2.0mm
C H=2.5mm

Plating Option
A G/F
B Au3
C Au5
D Au10
E Au15
S Special

Insulator Material
Option
A BK-PBT
B BK-PA66
C BK-PA6T
D BK-PA46
E BK-LCP
S Special

Insulator Quantity
1 1PCS
2 2PCS
3 3PCS
S Special

Pin Length
(A/B/C)
01-99