

GENERAL TECHNICAL CHARACTERISTICS

Reference standards : IEC 61071-60068

Dielectric : Polypropylene film

Construction : Dry construction, filled by solid resin,
Non-inductive type

Coating : Polyester tape wrapping, UL94V0 resin end fill

ELECTRICAL CHARACTERISTICS

Operating temperature range(case) : - 40 to + 85 °C

Capacitance : 15 to 500µF

Rated Voltage : 500 to 1100 Vdc

Tolerance : ± 5% ± 10%

Dissipation factor: $\leq 2 \times 10^{-3}$ Measured at 1000±20 Hz 25±5°C.

Life expectancy : 100,000 hours at Un and 70 °C

PROTECTION AGAINST OVERVOLTAGES

1.1 × Un	30% of the service period
1.15 × Un	30 min/d
1.2 × Un	5 min/d
1.3 × Un	1 min/d
1.5 × Un	100 ms no more than 1000 times



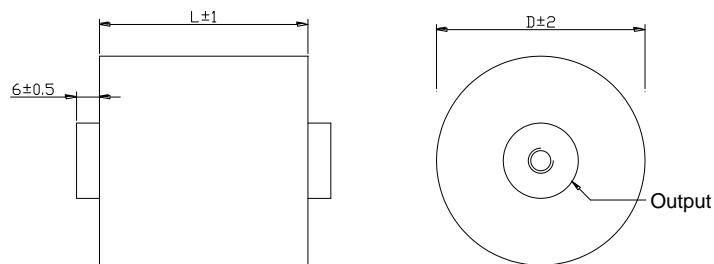
TEST METHODS AND PERFORMANCES

Test voltage between terminals : 1.5xUn for 10s at 25 °C

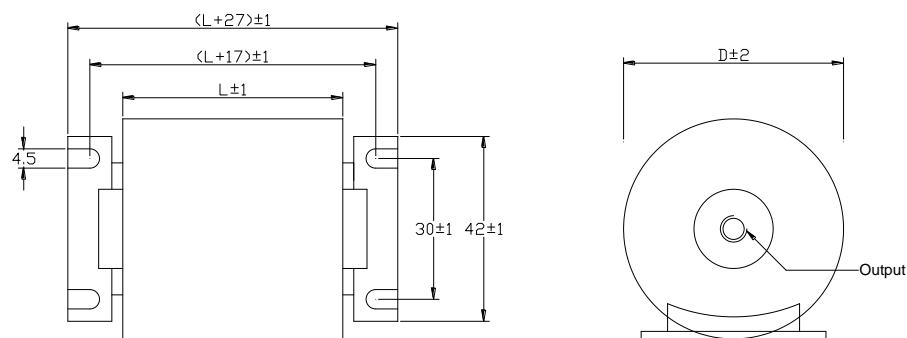
Test voltage terminal to case : 3 KV 50Hz for 60 sec

Insulation resistance (C*Ri) : ≥ 5000 s

DESIGN



Style S



Style SA

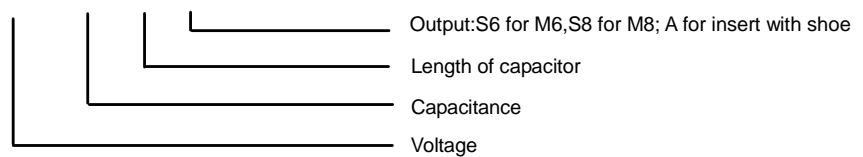
Output	M6*8	M8*8
MaxTorque	4.5 N.M	8.5 N.M

Electrical specifications, ordering codes

Part Number	Capacitance (µF)	Diameter (mm)	Length (mm)	Output	du/dt (v/µs)	Irms max. (A)	ESR (mΩ)
Un dc 500V							
SHA-500-50	50	50	40	M6	32	30	1.4
SHA-500-80	80	52	50	M6	22	31	1.6
SHA-500-100	100	58	50	M6	22	36	1.4
SHA-500-150	150	58	64	M6	15	37	1.4
SHA-500-250	250	74	64	M8	15	53	1.2
SHA-500-300	300	56	114	M6	7	37	2.7
SHA-500-500	500	72	114	M8	7	54	1.8
Un dc 700V							
SHA-700-35	35	53	40	M6	47	30	1.6
SHA-700-50	50	52	50	M6	32	29	1.9
SHA-700-80	80	65	50	M6	32	40	1.4
SHA-700-100	100	60	64	M6	21	36	1.9
SHA-700-150	150	72	64	M8	21	48	1.4
SHA-700-200	200	58	114	M6	10	35	3.1
SHA-700-300	300	71	114	M8	10	48	2.2
Un dc 900V							
SHA-900-20	20	50	40	M6	66	25	2.0
SHA-900-30	30	50	50	M6	44	25	2.4
SHA-900-40	40	58	50	M6	44	31	1.9
SHA-900-50	50	53	64	M6	29	27	2.7
SHA-900-100	100	74	64	M8	29	45	1.6
SHA-900-150	150	63	114	M6	14	36	3.3
SHA-900-200	200	72	114	M8	14	45	2.6
Un dc 1100V							
SHA-1100-15	15	51	40	M6	83	24	2.2
SHA-1100-25	25	53	50	M6	56	26	2.4
SHA-1100-40	40	67	50	M6	56	37	1.7
SHA-1100-50	50	61	64	M6	37	32	2.4
SHA-1100-80	80	77	64	M8	37	46	1.7
SHA-1100-100	100	60	114	M6	18	31	4.1
SHA-1100-150	150	73	114	M8	18	43	2.9

How to Order:

SHA - 900 - 200 - * #



Different values custom design available upon request