

GENERAL TECHNICAL CHARACTERISTICS

Reference standards : IEC 61071-60068
 Dielectric : Polypropylene film
 Construction : Dry construction, filled by solid resin,
 Non-inductive type
 Case : Aluminium case



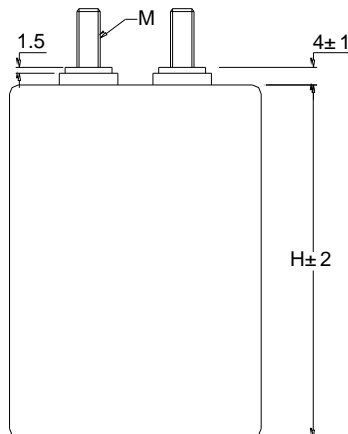
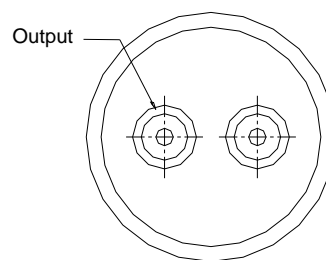
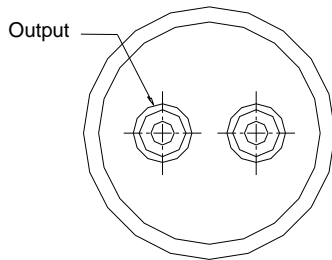
ELECTRICAL CHARACTERISTICS

Operating temperature range(case) : - 40 to + 85 °C
 Capacitance : 165 to 1300µF
 Rated Voltage : 500 to 700 Vdc
 Tolerance : $\pm 5\% \pm 10\%$
 Dissipation factor: $\leq 2.0 \times 10^{-3}$ Measured at 1000 Hz and 25°C
 Life expectancy : 100,000 hours at Un and 70°C

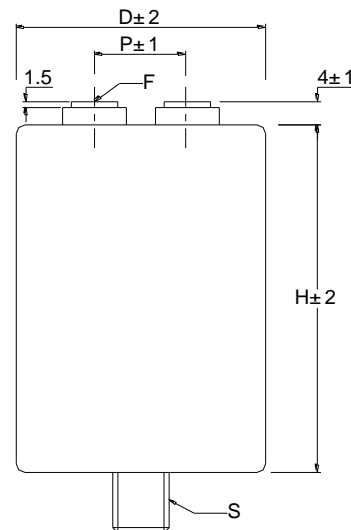
TEST METHODS AND PERFORMANCES

Test voltage between terminals : $1.5 \times U_n$ for 10s at 25 °C
 Test voltage terminal to case : 3 KV 50Hz for 60sec
 Insulation resistance (C*Ri) : ≥ 5000 s

DESIGN



Clamp mounting



Stud mounting

Case	Out put				Stud mounting		
	M	Torque	F	Torque	P	S	Torque
D=55			M5×8	2.5 N.M Max	22.0	M10×12	6.0 N.M Max
D=60,65			M5×8	2.5 N.M Max	28.6	M12×16	8.0 N.M Max
D=76,86	M8×20	8.5 N.M Max	M6×8	4.5 N.M Max	32.0		

PROTECTION AGAINST OVERVOLTAGES

1.1 x Un	30% of the service period
1.15 x Un	30 min/d
1.2 x Un	5 min/d
1.3 x Un	1 min/d
1.5 x Un	100 ms no more than 1000 times

Electrical specifications, ordering codes

Part Number	Capacitance (µF)	Diameter (mm)	Height (mm)	P (mm)	Irms max. (A)	ESR (mΩ)	Rth (K/W)	Weight (kg)
Un dc 500V								
SHG-500-250	250	55	120	22.0	37	3.9	5.1	0.35
SHG-500-300	300	60	120	28.6	41	3.5	4.7	0.40
SHG-500-370	370	65	120	28.6	45	3.1	4.4	0.45
SHG-500-500	500	76	120	32.0	52	2.6	3.9	0.65
SHG-500-680	680	86	120	32.0	59	2.3	3.5	0.85
SHG-500-1000	1000	76	225	32.0	79	2.0	2.0	1.25
SHG-500-1300	1300	86	225	32.0	87	1.8	1.8	1.50
Un dc 700V								
SHG-700-165	165	55	120	22.0	35	4.4	5.1	0.35
SHG-700-200	200	60	120	28.6	38	3.9	4.7	0.40
SHG-700-240	240	65	120	28.6	42	3.5	4.4	0.45
SHG-700-330	330	76	120	32.0	49	2.9	3.9	0.65
SHG-700-425	425	86	120	32.0	56	2.5	3.5	0.85
SHG-700-600	600	76	225	32.0	77	2.2	2.0	1.25
SHG-700-800	800	86	225	32.0	85	1.9	1.8	1.50

How to order:

SHG- 700 - 165- * #

