



Advantages / Benefits 优点/特性

- ▶ Easy System integration by Easy LINK provides low cost of ownership
易连接功能易于系统集成，可减少用户花费。
- ▶ Compact version with integrated conductivity electrodes
一体式带集成电导率电极
- ▶ Remote version with separated transmitter for short (<5 m) or long (<500 m) distances
远距离带分体式变送器，传输距离短型 (<5米)，长型 (<500米)
- ▶ Easy commissioning due to multi language, menu-guided operation
多语言，菜单导向操作便于调试
- ▶ Individual adjustment of all measuring ranges
所有测量范围均可独立调整
- ▶ For use in both pipes and tanks installed in custom fittings and submersion kits
装在普通接头和浸入式接头中，可用于管道安装和储罐安装

Design 设计

Conductivity-transmitter type 8225 compact 8225型一体式电导率变送器

The conductivity transmitter compactly combines a conductivity-sensor and a transmitter with display in splash-proof plastic IP 65 enclosure.

一体式电导率变送器由一个电导率传感器和一个带显示的变送器组成；外壳为IP65防水溅塑料。The sensor component consists of replaceable sensors. Sensors with cell constants 0.01 and 0.1 are fitted with stainless steel electrodes, and those with cell constants 1.0 and 10 are fitted with graphite electrodes.

传感器元件为可更换部件，其电导率常数为0.01和0.1的是不锈钢电极，1.0和10的是石墨电极。The Pt1000 for automatic temperature compensation is a standard feature in the sensor housing.

标准传感器带有Pt1000自动温度补偿功能。

The transducer component converts the measured signal and displays the actual value. 变送器将测量信号进行转换并显示实际值。

Compact version for insertion fitting types S020 and 1500 / 1501

一体式变送器插入式接头有S020和1500/1511型。

Conductivity-transmitter type 8225 separate 8225型分体式电导率变送器

The conductivity-transmission system combines a conductivity sensor type 8220 and a separate transmitter type 8225 with display. 电导率变送器系统由一个8220型电导率传感器和一个分离式带显示的8225型变送器组成。

The 8225 separate transmitter is available in panel mounted version and in a wall mounted plastic IP65 enclosure for connection to the conductivity sensor type 8220.

与8220型传感器相连的8225型分离式变送器有面板式和IP65塑料外壳的墙装式。

Conductivity-sensor type 8220 8220型电导率传感器

Four conductivity sensors with different cell constants offers large capabilities of conductivity measurement.

有四种不同电导率常数的传感器可满足大范围的电导率测量需求。

The Pt1000 for automatic temperature compensation is integrated in the sensor housing.

用于自动温度补偿的Pt1000集成于传感器壳体之内。

Two different versions for short or long distances between sensor and transmitter are available. The short version sensor up to 5 metres transmits directly an analog signal. 传感器与变送器之间距离可选择长、短两种形式。短距离型传感器与变送器之间间隔最大5米，直接传送模拟信号。

The long version sensor converts the measured signal into a digital signal on the sensor for passing to the transmitter up to a distance of 500 metres.

长距离型传感器将测量信号转换为数字信号后再传给变送器，其传输间距可达500米。

Remote indication with separated transmitter device for wall or panel mounting connected with conductivity-sensor 8220 for fitting types S020 and 1500 / 1501.

面板式或墙装式可远距离指示的分离式变送器与8220型传感器相连，插入式接头有S020和1500/1511型。

Application 应用

Conductivity measurements 电导率测量

Waste engineering
污水工程

Water treatment and process technology
废水处理和工艺技术

Cooling water monitoring
冷却水监控

Chemical dosing
化学剂量控制

Electroplating
电镀

bürkert
Easy Fluid Control Systems

ON / OFF process control
开/关过程控制

Description 描述

On / Off valve
开/关阀

Relays

Relays

8225 transmitter
8225变送器

Applications:
应用

Neutralization
中和
Chemical dosing
化学剂量
Waste water processing
废水处理

Applications:
应用

Water monitoring
水质监控
Continuous chemical dosing
连续化学剂量控制
Waste water treatment
废水处理

Continuous process control
连续过程控制

Description 描述

Continuous control valve
连续控制阀

4... 20 mA

8225 transmitter
8225变送器

8220 sensor
8220传感器

Design 设计

The conductivity measuring system is available as a compact version 8225 and as a separate version combining a sensor type 8220 and the separate transmitter type 8225 with display. The conductivity transmitter uses different cell constants. Sensors with cell constants 0.01 and 0.1 are fitted with stainless steel electrodes and those with cell constants 1.0 and 10 are fitted with graphite electrodes. The Pt1000 for automatic temperature compensation is a standard feature in the conductivity sensor housing.

电导率测量系统有8225型一体式和由8220型传感器加分离式带显示8225型变送器构成的分体式。电导率变送器采用不同电极常数。电极常数为0.01和0.1的传感器为不锈钢电极，电极常数为1.0和10的传感器为石墨电极。电导率传感器具有用于自动温度补偿的Pt1000标准功能。

The 8225 separate transmitter is available in panel mounted version and in a wall mounted plastic IP65 enclosure for both short and long distance connection to the sensor 8220.

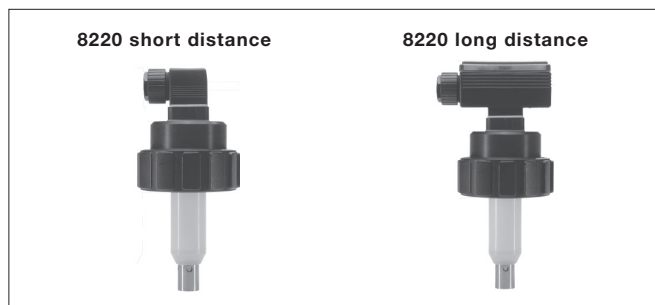
8225分体式变送器有面板式和IP65塑料外壳墙装式两种，与8220型传感器相连，可选择长、短两种连接距离。

The 8225 conductivity transmitter output signal is a standard 4 - 20 mA signal. Optional with two freely adjustable relay outputs.

8225型电导率变送器输出4-20mA标准信号。有两个可随意设定的继电器输出供选择。

The 8220 conductivity sensor is available in short distance (5 m) or long distance feature (<500 m). The 8220 sensors short distance is provided with a 4 pin connector. The analog output signal can be transmitted up to 5 meters via a 4 x 1.5 mm² shielded cable. The 8220 sensor long distance is provided with a signal converter type 8221. The 8221 signal converter converts the measured signal of the sensor into a digital signal. This signal can be transmitted up to 500 m via a shielded 4-wire transmission line.

8220型电导率传感器可选择短距离型（<5米）或者长距离型（<500米）。8220短距离型传感器配置一个4芯适配器。通过一条4×1.5mm²的屏蔽电缆可将模拟输出信号传送5米远。8220长距离型传感器配置一个8221型信号转换器，将传感器测得的信号转换为数字信号；数字信号通过一条屏蔽的4芯传输电缆传送，距离可达500米。



Principle of Operation 工作原理

The conductivity is defined as the ability of a solution to conduct electrical current. The load carriers are ions (e.g. dissolved salts or acids). In order to measure conductivity, two electrodes are used at a fixed distance apart and with a specific surface. A voltage source is connected to the electrodes. The measured current is a direct function of the conductivity of the solution.

电导率定义为溶液的导电性。溶液导电的载体是离子（如溶解的盐或酸）。测量电导率需用两个间距固定的具有专用表面材质的电极。在两电极间连接一个电压源，然后测量流过的电流。该电流大小直接反映了溶液的电导率。

The transmitter without relay or with 2 additional relay functions in a 3-wire circuit. Limit values are freely adjustable.

三线制变送器可以选择带或不带2继电器输出功能。限值可自由设定。

Installation 安装

The compact conductivity transmitter can easily be installed into any Bürkert insertion fitting system (S020 or 1500 / 1501) by just fixing the main nut.

一体式电导率变送器通过固定主螺母可以很容易地安装于宝得插入式接头 (S020或1500/1501) 中。

The separated version requires a separate conductivity transmitter type 8225 with display. The transmitter 8225 is available in panel mounted version or in a wall mounted plastic IP65 enclosure. The conductivity sensor 8220 is connected for a short distance (<5 m) directly via cable plug connector or for long distance (<500 m) via the digital converter 8221 to the separate transmitter 8225.

分体式中的8225型分离式电导率变送器带显示功能，可选择面板式安装或带IP65塑料外壳的墙装式安装。8220型电导率传感器和8225型分离式电导率变送器之间通过电缆接插件进行短距离 (<5米) 连接，或者通过8221型数字转换器进行长距离 (<500米) 连接。

The sensor 8220 can be easily installed into pipes using our specially designed fitting system (S020 or 1500 / 1501) by just fixing the main nut. 只需固定主螺母就可以很容易地将8220型传感器通过专门设计的接头系列 (S020或1500/1501) 安装于管道中。

Compact Version 8225

一体式8225型



Separate Version 8225

分体式8225型

Conductivity-Sensor 8220
8220型电导率传感器



Distance up to 5 m
距离可达5米

Conductivity Transmitter 8225
8225型电导率变送器



Conductivity-Sensor 8220
with digital converter 8221
带8221型数字转换器的8220
型电导率传感器



Distance up to 500 m
距离可达500米

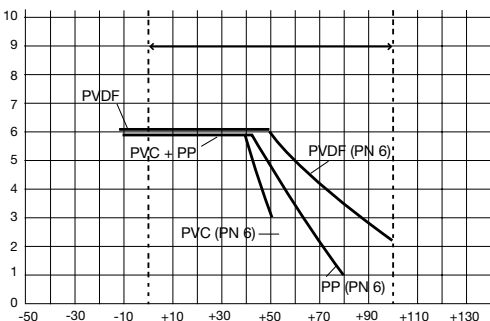
Conductivity Transmitter 8225
8225型电导率变送器



Pressure-Temperature-Diagramm

压力-温度特性曲线

Mind pressure-temperature dependence according to the respective fitting material.
注意压力-温度特性与相应的接头材质有关。



Industrial immersion fitting

工业浸入式接头

Allows installation into tanks and containers. The following standard lengths are available:
500, 1000, 1500, 2000 mm.
可以安装在储罐和容器内。
有下列标准长度供选择: 500, 1000, 1500, 2000mm。
Special lengths on request.
特殊长度可按需提供。



Operation / Commissioning 调试/运行

Customized adjustments, such as measuring ranges, engineering units and alarm setpoints can be carried out menu-supported on site via a multi-lingual display. Please consider the respective operating instructions prior to commissioning the devices.
用户定义，如测量范围、工程单位和报警设定点等均可通过多种语言显示的菜单方式设定。在对设备进行调试前请参阅其相应的操作手册。

Electrode Types and Measuring Ranges 电极类型与测量范围

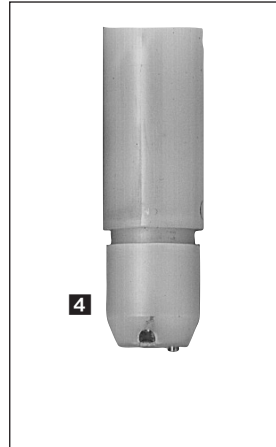
Different electrode designs are required based on selected cell constant.
根据所选的电极常数需要设计不同的电极。



1 K = 0.1 and
2 K = 0,01

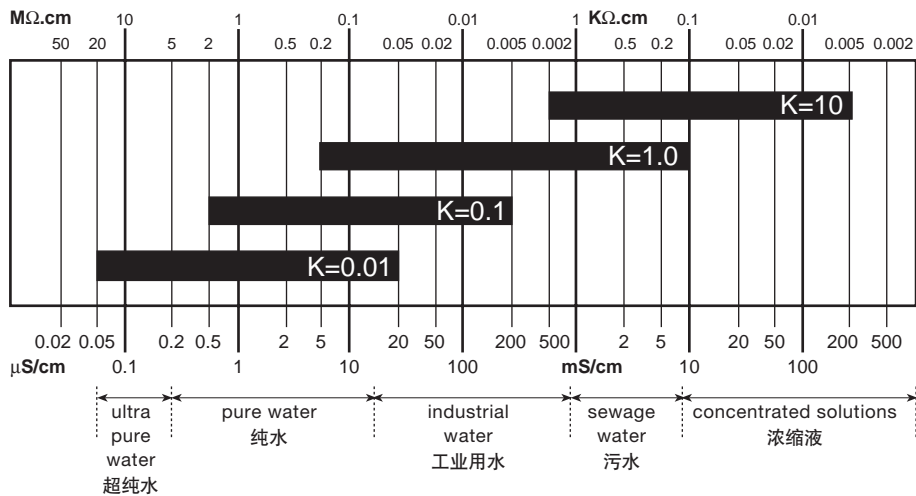


3 K = 1.0



4 K = 10

The conductivity transmitter can be connected to 4 different sensors with cell constants 0.01, 0.1, 1.0 and 10.
Select the conductivity sensor according to the measuring range and using the table below:
电导率变送器可以与四种不同电极常数 (0.01、0.1、1.0、10) 的传感器相连。
根据测量范围用下表选择电导率传感器：



Operation and display 操作与显示

The operation of the conductivity transmitter is classified in the following 3 different menus:
电导率变送器根据以下3个菜单进行操作:

Main Menu 主菜单

- conductivity
电导率
- temperature
温度
- output current
输出电流
- HOLD function
HOLD保持功能

Calibration Menu 标定菜单

- language
语言
- engineering units
工程单位
- cell constant
电极常数
- temperature compensation
温度补偿
- measuring range 4... 20 mA
测量范围4... 20mA
- relay function
继电器功能
- filter selection
滤波器选择

Test Menu 测试菜单

- offset
偏置
- span
量程
- conductivity non compensation
无补偿电导率
- simulation of conductivity
模拟电导率

Display selection and increasing key (numeric values) impulses or automatic.
显示选择与增加键 (数字值)。



Direction downwards in menu or sideways for digit selection
菜单下行或左右数字选择

Relay 1: contact closed
继电器1:常闭

Relay 2: contact closed
继电器2:常闭

Acceptance of chosen parameter or adjusted value
确认所选参数或设定值

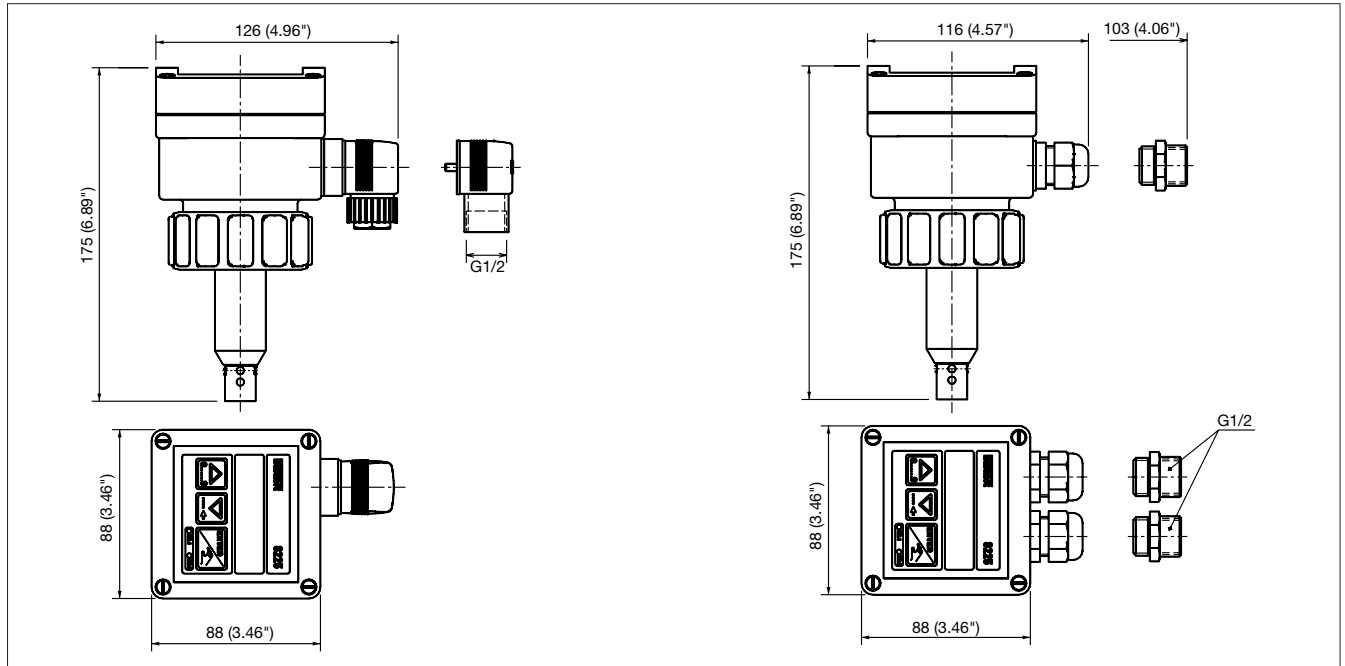
Technical Data 技术参数

General Data 通用参数

Pipe diameter 管径	Stainless Steel: 不锈钢	DN 32 to DN 50 (1 1/4" to 2"); fitting type S020 DN 3至DN50(1 1/4"至2"); S020型接头 DN 65 to 100 weld-in; weld-o-let fitting type 1500 DN6至DN100150型焊接式接头
	Brass: 黄铜	DN 32 to DN 50; fitting type S020 DN3至DN50: S02型接头
	PVC, PP, PVDF:	DN 15 to DN 50; fitting type S020 (true union ISO) DN1至DN50: S02型接头 (ISO油宁) DN 32 to DN 50; fitting type S020 (all other versions) DN3至DN50: S02型接头 (除油宁外的所有其它连接方式) DN 65 to DN 100 PE/PP/PVDF-weld-o-let fitting type 1501 DN6至DN100 : 1501型PE/PP/PVD焊接式接头
Measuring range 测量范围		0.05 µS/cm ... 200 mS/cm, depending on cell constant
Measuring error 测量误差		0.05 µS/cm—200mS/cm 与电池常数有关 typical: 3% of measured value 典型: 测量值的3% max.: 5% of measured value 最大: 测量值的5%
Temperature compensation 温度补偿		automatic with standardized integrated Pt1000 with reference temperature 25 °C (77 °F) 由标准化集成的Pt1000自动进行, 标准温度25°C(77°F)
Ambient temperature 环境温度		0 to 60 °C (32 °F to 140 °F)
Storage temperature 储存温度		0 to 60 °C (32 °F to 140 °F)
Compact version 一体式		
Pressure class 压力等级	PN 6	
Enclosure 外壳防护等级	IP 65 (NEMA 4). Relative humidity max. 80%	
Electronic housing 电子壳体	IP65 (NEMA 4) 最大相对湿度: 80%	
Sensor housing 传感器壳体	PVDF; O-rings FPM / EPDM	
Voltage supply 电源电压	PVDF FPM/EPDM 型密封圈	
Consumption 功耗	12-30 VDC	
Display 显示	80 mA (with relays), 20 mA (without relays) 80mA (带继电器) : 20mA (不带继电器)	
Analog output signal 模拟输出信号	15 x 60 mm LCD 8 digits, alphanumeric 15 × 60mm LCD 8位字母数字混合显示	
Load 负载	15 segments, 9 mm high 15段, 9mm高	
Relay output (optional) 继电器输出 (可选)	4... 20 mA programmable, proportional to the conductivity 4—20mA与电导率成比例的可编程信号	
Measuring electrodes 测量电极	<700 at 30 V; <400 at 24 V; <100 at 15 V 30V时<700Ω; 24V时<400Ω; 15V时<100Ω	
	2 relays, 3 A / 230 V; freely adjustable 2继电器, 3A/230V; 自由可调	
	K = 0.01 stainless steel electrodes K=0.01 不锈钢电极	
	K = 0.1 stainless steel electrodes K=0.1 不锈钢电极	
	K=0.1 不锈钢电极	
	K = 1.0 graphite electrodes K=1.0 石墨电极	
	K=1.0 石墨电极	
	K = 10 graphite electrodes K=10 石墨电极	
	K=10 石墨电极	
Separate transmitter version 分体式变送器		
Enclosure 外壳	Wall mounted version IP65 (NEMA4). Rel. humidity max. 80%; ABS 墙装式IP65(NEMA 4), 最大相对湿度80%; ABS Panel version IP 20 (rear plate); IP 65 (front plate); PC 面板式IP20(后面板); IP65(前面板); PC	
Voltage supply 电源电压	12- 30 VDC; (115/230 VAC option wall mounted version)	
Consumption 功耗	12—30VDC; (墙装式可以选择115/230VAC)	
Display 显示	80 mA (with relays), 20 mA (without relays) 80mA (带继电器) : 20mA (不带继电器)	
Analog output signal 模拟输出信号	15 x 60 mm LCD 8 digits, alphanumeric 15 × 60mm LCD 8位字母数字混合显示	
Load 负载	15 segments; 9 mm high 15段, 9mm高	
Relay output 继电器输出	4... 20 mA programmable, proportional to the conductivity 4—20mA与电导率成比例的可编程信号	
	short distance long distance 短距离型 长距离型	
	<700 <1100 at 30 V	
	<400 <910 at 24 V	
	<100 <470 at 15 V	
	2 relays 3 A / 230 V; freely adjustable 2继电器, 3A/230V; 自由可调	
Separate conductivity sensor type 8220		
Pressure class 压力等级	PN 6	
Enclosure 外壳防护等级	IP 65	
Sensor housing 传感器壳体	PVDF	
Electronic housing 电子壳体	PA	
O-ring O型密封圈	FPM / EPDM	
Temperature compensation 温度补偿	automatic with standardized integrated Pt1000 with reference temperature 25 °C (77 °F) 由标准化集成的Pt1000自动进行, 标准温度25°C (77°F)	
Measuring electrodes 测量电极	K = 0.01 stainless steel electrodes K=0.01 不锈钢电极	
	K = 0.1 stainless steel electrodes K=0.1 不锈钢电极	
	K=0.1 不锈钢电极	
	K = 1.0 graphite electrodes K=1.0 石墨电极	
	K=1.0 石墨电极	
	K = 10 graphite electrodes K=10 石墨电极	
	K=10 石墨电极	
Signal cable length between 8220 sensor and 8225 transmitter 8220型传感器与8225型变送器之间信号电缆长度	Short distance max. 5 m 短距离型 最大5米 Long distance max. 500 m 长距离型最大500米	

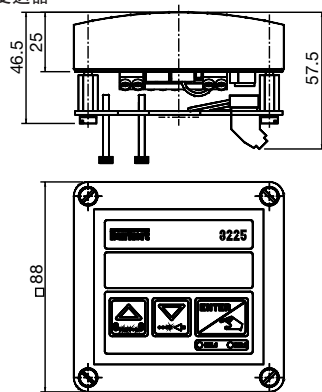
Dimensions [mm (inch)] 外形尺寸[mm (inch)]

Conductivity transmitter type 8225 compact and separate version
8225型一体式和分体式电导率变送器



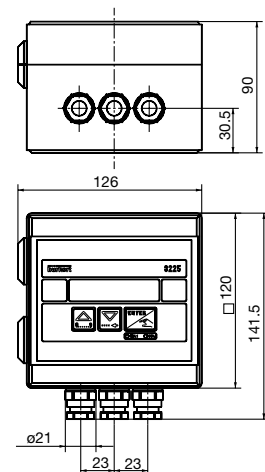
Conductivity transmitter type 8225 panel mounted version
面板式安装的8225型电导率变送器

面板式安装的8225型电导率变送器



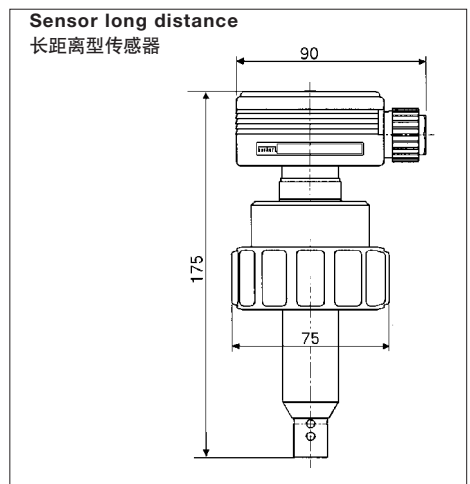
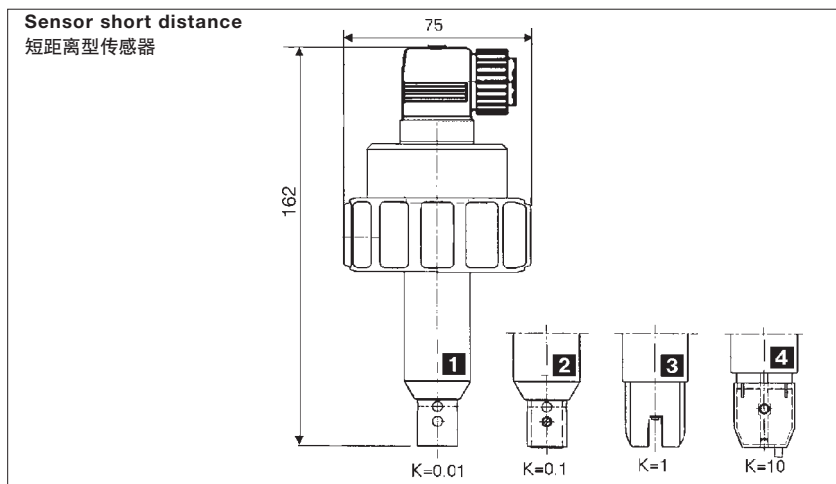
Conductivity transmitter type 8225 wall mounted version
墙装式8225型电导率变送器

墙装式8225型电导率变送器

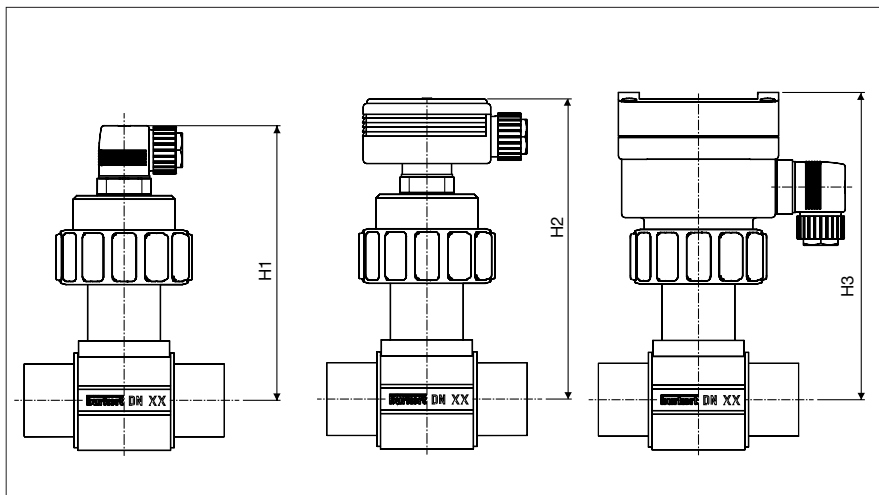


Conductivity-sensor type 8200 for Burkert fitting type S020; 1500; 1501

使用S020; 1500; 1501型接头的8200型电导率传感器



Dimensions [mm] - Fittings S020, DN 15 - 50 for transmitter 8225 or sensor 8220
 DN15-50 S020型接头尺寸图[mm]. 用于8225型变送器或8220型传感器



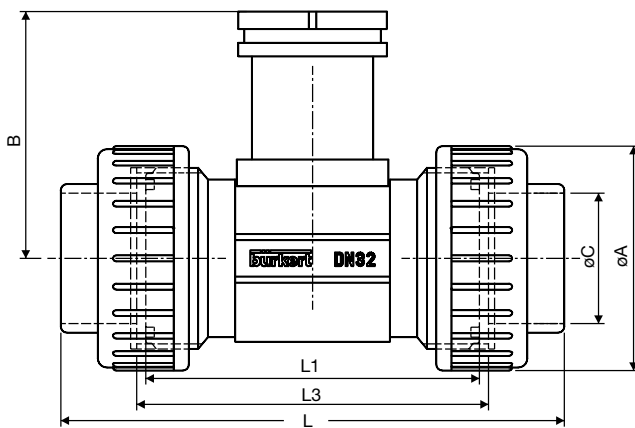
Variable Dimensions [mm]

变量尺寸[mm]

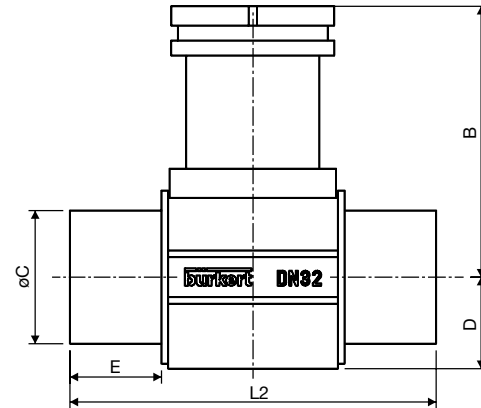
DN	H 1	H2	H3
15	163	177	177
20	163	177	177
25	163	177	177
32	163	177	177
40	164	178	178
50	170	184	184

Applicable for all fitting materials
 DN 15 ...50 sizes and process connections.
 适用于所有材质的DN15—DN50安装管道和过程连接。

True union - PVC, PP, PVDF PVC, PP, PVDF油宁



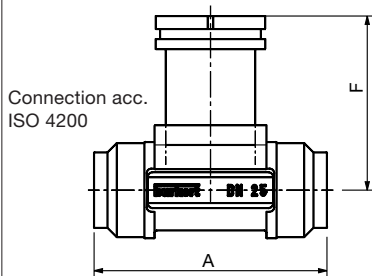
Solvent spigot - PVC, PP, PVDF PVC, PP, PVDF融接套管



True union										Solvent spigot					
B	øA	L			øC			L1	L3	DN	D	L2		E	
		DIN	ANSI	JIS	(DIN)	(ANSI)*	(JIS)*					PVC	PP/PVDF	PVC	PP/ PVDF
81.4	74	148	---	---	20	---	---	110	116	15	---	---	---	---	---
81.4	74	154	---	---	25	---	---	110	116	20	---	---	---	---	---
81.4	74	160	---	---	32	---	---	110	116	25	---	---	---	---	---
81.4	74	168	170.0	169	40	42.2	38.60	110	116	32	27.5	110	100	27.5	20
85.2	83	188	190.2	190	50	48.3	48.70	120	127	40	31.5	120	106	30.0	23
91.5	103	212	213.6	213	63	60.3	60.80	130	136	50	39.5	130	110	37.0	27

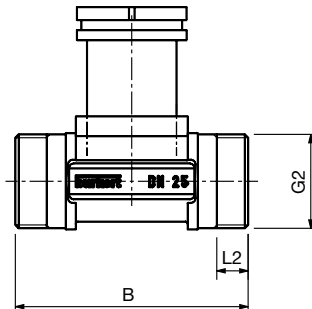
* only for PVC with true union
 仅适用于PVC油宁

Weld ends - Stainless steel 不锈钢焊接口



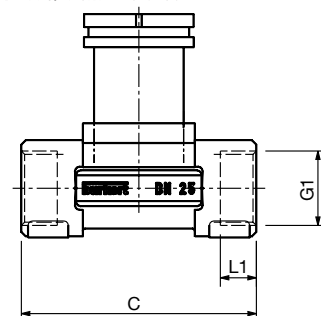
Material Stainless steel:
 DIN 1.4404; BS 316L
 不锈钢材质: DIN 1.4404; BS 316L

Male threaded port - Stainless steel / Brass 不锈钢/黄铜外螺纹接口



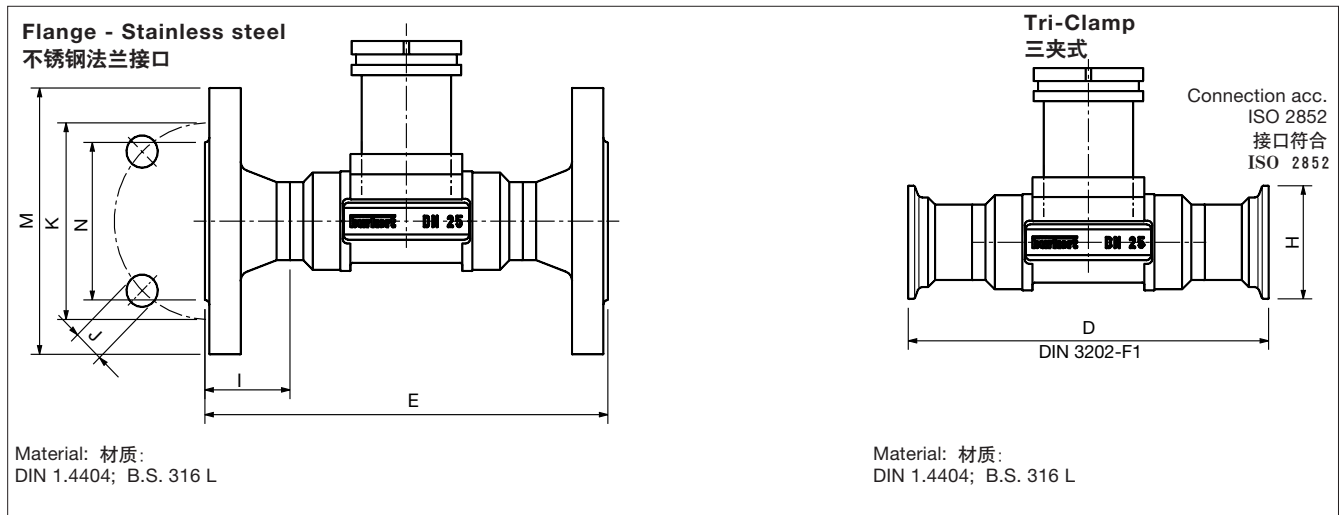
Material Stainless steel:
 DIN 1.4404; BS 316L
 不锈钢材质: DIN 1.4404; BS 316L

Female threaded port Stainless steel / Brass - 不锈钢/黄铜内螺纹接口



Material Stainless steel:
 DIN 1.4404; BS 316L
 不锈钢材质: DIN 1.4404; BS 316L

Dimensions [mm] - Fittings S020, DN 15 - 50 DN15-50 S020型接头尺寸图[mm]

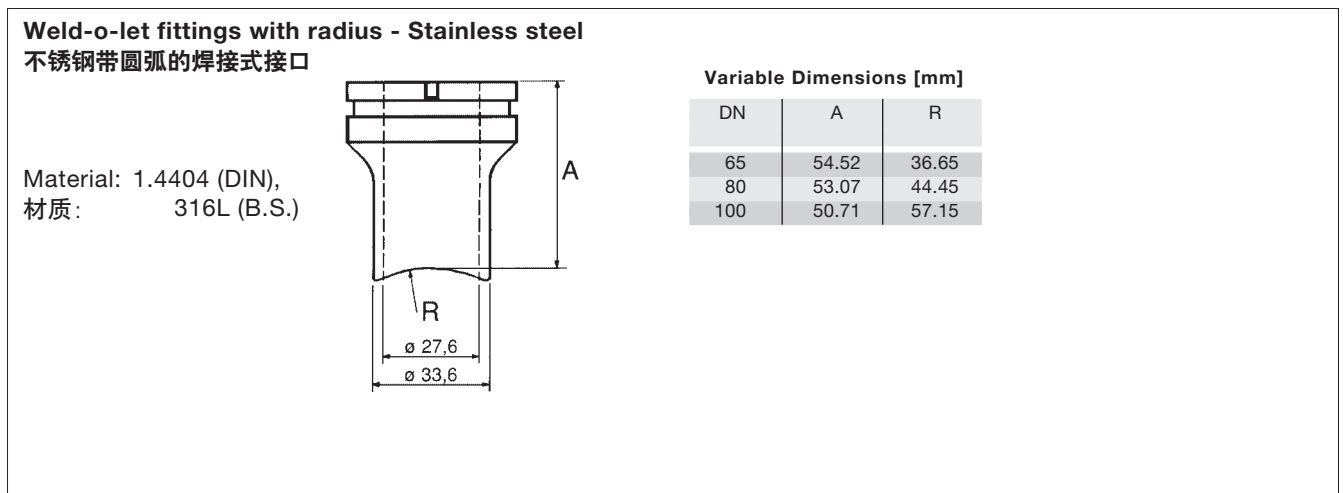


Variable dimensions [mm] for Weld ends, Male threaded port, Female threaded port, Flange, Tri-Clamp
变量尺寸[mm] 用于焊接接口,外螺纹接口,内螺纹接口,法兰接口,三夹式接口

DN	Weld ends		Length dimensions						Thread				Tri-Clamp H	Flange dimensions											
	ø out-side	Wall-thickness	A	B	C	D	E (DIN) (ANSI)	E (JIS)	F	G1	L1	G2		L2	Norm*	I	J	K	M	N					
32	42.4	2.0	119	119	120	180	180	178	81.6	G 11/4	23.5	G 1/2	18.0	DIN	31.0	4x18.0	100.0	140	78.0						
										NPT 11/4	21.0									ANSI	31.0	4x15.8	88.9	117	63.5
										Rc	21.0														
40	48.3	2.0	129	129	130	200	200	190	85.4	G 11/2	23.5	M55x2	19.0	DIN	36.0	4x18.0	110.0	150	88.0						
										NPT 11/2	20.0									ANSI	36.0	4x15.8	98.4	127	73.0
										Rc 11/2	19.0														
50	60.3	2.6	149	149	150	230	230	216	91.5	G 2	27.5	M64x2	20.0	DIN	41.0	4x18.0	125.0	165	102.0						
										NPT 2	24.0									ANSI	41.0	4x19.0	120.6	152	92.1
										Rc 2	24.0														

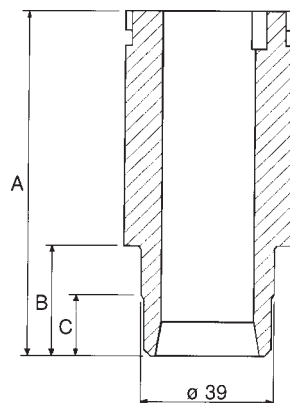
* Flange: DIN 2501/2633, length according to DIN 3201-F1;
ANSI B16-5-1988, length according to DIN 3201-F1
JIS 10K, length according to ANSI B16-10

Dimensions [mm] - Fittings DN 65 - 100 DN 65-100接头尺寸图 [mm]



Dimensions [mm] - Fittings DN 65 - 100 DN 65-100 接头尺寸图 [mm]

Weld-o-let fittings - PE, PP, PVDF
PE, PP, PVDF 焊接口



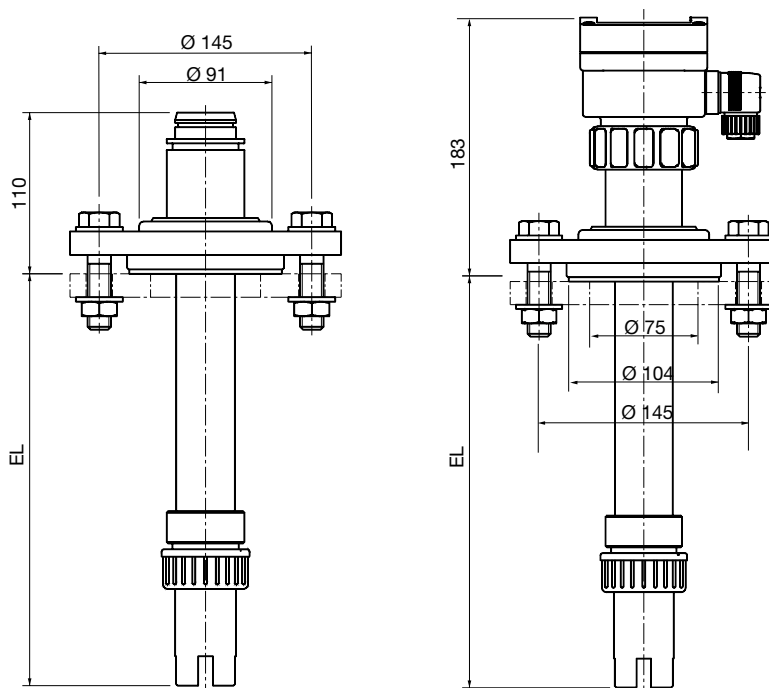
Variable Dimensions [mm]

DN	A	PE		PP		PVDF	
		B	C	B	C	B	C
65-100	72.5	13	---	13	---	10.4	---

Immersion fitting

浸入式接头

Lengths L: 长度L
500, 1000, 1500, 2000



Ordering Data for Conductivity Transmitter 8225 8225型电导率变送器订货数据

A compact version of conductivity transmitter type 8225 consists of two basic units as follows:

8225型一体式电导率变送器由以下两部分构成:

- Fitting type S020 (DN15 to DN50) or 1500/1501 (DN65 to DN100)
S020型 (DN 15至DN50) 或1500/1501型 (DN65至DN100) 接头
- Compact conductivity transmitter 8225
8225型一体式电导率变送器

TYPE DESCRIPTION 型号	Electrode 电极	Gasket 垫片	Voltage 电压	Worldwide Standard ITEM - N o. 1 x PG 13.5 通用标准订货号	North America Standard ITEM - N o. Conduit plug G 1/2" 北美标准订货号
Conductivity Transmitter compact 4-20 mA output; without relay 一体式电导率变送器, 输出4-20mA, 不带继电器					
Compact Transmitter 8225	C = 0.01	FPM	12 - 30 VDC	418 962 Z	418 974 V
Compact Transmitter 8225	C = 0.1	FPM	12 - 30 VDC	418 963 S	418 975 W
Compact Transmitter 8225	C = 1.0	FPM	12 - 30 VDC	418 964 T	418 976 X
Compact Transmitter 8225	C = 10	FPM	12 - 30 VDC	418 965 U	418 977 Y
Compact Transmitter 8225	C = 0.01	EPDM	12 - 30 VDC	418 966 V	418 982 N
Compact Transmitter 8225	C = 0.1	EPDM	12 - 30 VDC	418 967 W	418 983 P
Compact Transmitter 8225	C = 1.0	EPDM	12 - 30 VDC	418 968 F	418 984 Q
Compact Transmitter 8225	C = 10	EPDM	12 - 30 VDC	418 969 G	418 985 R
Conductivity Transmitter compact 4-20 mA output; without relay 一体式电导率变送器, 输出4-20mA, 不带继电器 Cable Plug DIN					
Compact Transmitter 8225	C = 0.01	FPM	12 - 30 VDC	418 950 H	
Compact Transmitter 8225	C = 0.1	FPM	12 - 30 VDC	418 951 W	
Compact Transmitter 8225	C = 1.0	FPM	12 - 30 VDC	418 952 X	
Compact Transmitter 8225	C = 10	FPM	12 - 30 VDC	418 953 Y	
Compact Transmitter 8225	C = 0.01	EPDM	12 - 30 VDC	418 958 D	
Compact Transmitter 8225	C = 0.1	EPDM	12 - 30 VDC	418 959 E	
Compact Transmitter 8225	C = 1.0	EPDM	12 - 30 VDC	418 960 B	
Compact Transmitter 8225	C = 10	EPDM	12 - 30 VDC	418 961 Y	
Conductivity Transmitter compact 4-20 mA output; without relay 一体式电导率变送器, 输出4-20mA, 不带继电器 2 x PG 13.5 2 x G 1/2"					
Compact Transmitter 8225	C = 0.01	FPM	115 - 230 VAC	426 935 E	426 951 N
Compact Transmitter 8225	C = 0.1	FPM	115 - 230 VAC	426 936 F	427 864 Q
Compact Transmitter 8225	C = 1.0	FPM	115 - 230 VAC	426 937 G	427 865 R
Compact Transmitter 8225	C = 10	FPM	115 - 230 VAC	426 938 R	427 866 J
Compact Transmitter 8225	C = 0.01	EPDM	115 - 230 VAC	426 939 J	427 867 K
Compact Transmitter 8225	C = 0.1	EPDM	115 - 230 VAC	426 940 X	427 868 U
Compact Transmitter 8225	C = 1.0	EPDM	115 - 230 VAC	426 941 L	427 869 V
Compact Transmitter 8225	C = 10	EPDM	115 - 230 VAC	426 942 M	427 870 S
Conductivity Transmitter compact 4-20 mA output; 2 x relay 一体式电导率变送器, 输出4-20mA, 2个继电器输出 2 x PG 13.5 2 x G 1/2"					
Compact Transmitter 8225	C = 0.01	FPM	12 - 30 VDC	418 954 Z	418 978 H
Compact Transmitter 8225	C = 0.1	FPM	12 - 30 VDC	418 955 S	418 979 A
Compact Transmitter 8225	C = 1.0	FPM	12 - 30 VDC	418 956 T	418 980 Y
Compact Transmitter 8225	C = 10	FPM	12 - 30 VDC	418 957 U	418 981 M
Compact Transmitter 8225	C = 0.01	EPDM	12 - 30 VDC	418 970 D	418 986 J
Compact Transmitter 8225	C = 0.1	EPDM	12 - 30 VDC	418 971 S	418 987 K
Compact Transmitter 8225	C = 1.0	EPDM	12 - 30 VDC	418 972 T	418 988 U
Compact Transmitter 8225	C = 10	EPDM	12 - 30 VDC	418 973 U	418 989 V
Conductivity Transmitter compact 4-20 mA output; 2 x relay 一体式电导率变送器, 输出4-20mA, 2个继电器输出 2 x PG 13.5 2 x G 1/2"					
Compact Transmitter 8225	C = 0.01	FPM	115 - 230 VAC	426 943 N	427 871 P
Compact Transmitter 8225	C = 0.1	FPM	115 - 230 VAC	426 944 P	427 872 Q
Compact Transmitter 8225	C = 1.0	FPM	115 - 230 VAC	426 945 Q	427 873 R
Compact Transmitter 8225	C = 10	FPM	115 - 230 VAC	426 946 R	427 874 J
Compact Transmitter 8225	C = 0.01	EPDM	115 - 230 VAC	426 947 J	427 875 K
Compact Transmitter 8225	C = 0.1	EPDM	115 - 230 VAC	426 948 T	427 876 L
Compact Transmitter 8225	C = 1.0	EPDM	115 - 230 VAC	426 949 U	427 877 M
Compact Transmitter 8225	C = 10	EPDM	115 - 230 VAC	426 950 Z	427 878 W

Ordering Data for Conductivity Transmitter 8225 8225型电导率变送器订货数据

A separate version of conductivity transmitter type 8225 consists of three basic units as follows:

8225型分体式电导率变送器由以下三部分构成:

- Fitting type S020 (DN15 to DN50) or 1500/1501 (DN65 to DN200)
S020型(DN 15至DN50) 或1500/1501型(DN65至DN200) 接头
- Conductivity-sensor 8220 short or long version (includes converter 8221)
8220型短距离型或长距离型(包括8221型转换器) 电导率传感器
- Conductivity transmitter 8225 wall- or panel mounted version
8225型面板式或墙装式电导率变送器

TYPE DESCRIPTION 型号	Relay 继电器	Sensor 传感器	Voltage 电压	ITEM - N o. 订货号
Conductivity Transmitter panel mounted version for separate sensor type 8220; 4-20 mA output 用于8220型分离式传感器的面板式电导率变送器. 输出4-20mA				
Panel mounted Transmitter 8225	no	no	12 - 30 VDC	426 830 R
Panel mounted Transmitter 8225	2 x relay	no	12 - 30 VDC	426 831 E
Panel mounted Transmitter 8225 for > 5m cable length	no	no	12 - 30 VDC	426 832 F
Panel mounted Transmitter 8205 for > 5m cable length	2 x relay	no	12 - 30 VDC	426 833 G

TYPE DESCRIPTION 型号	Relay 继电器	Sensor 传感器	Voltage 电压	ITEM - N o. 订货号
Conductivity Transmitter wall mounted version for separate sensor type 8220; 4-20 mA output 用于8220型分离式传感器的面板式电导率变送器. 输出4-20mA				
Wall mounted Transmitter 8225	no	no	12 - 30 VDC	426 834 H
Wall mounted Transmitter 8225	2 x relay	no	12 - 30 VDC	426 835 A
Wall mounted Transmitter 8225	no	no	115 - 230 VAC	426 836 B
Wall mounted Transmitter 8225	2 x relay	no	115 - 230 VAC	426 837 C
Wall mounted Transmitter 8225 for > 5m cable length	no	no	12 - 30 VDC	426 838 M
Wall mounted Transmitter 8225 for > 5m cable length	2 x relay	no	12 - 30 VDC	426 839 N
Wall mounted Transmitter 8225 for > 5m cable length	no	no	115 - 230 VAC	426 840 T
Wall mounted Transmitter 8225 for > 5m cable length	2 x relay	no	115 - 230 VAC	426 841 Q

TYPE DESCRIPTION 型号	Gasket 垫片	Sensor 传感器	Material Pt 1000 Pt100材料	ITEM - N o. 订货号
Conductivity sensor type 8220 short version (<5 m); PG 9 8220型短距离式 (<5m) 电导率传感器				
8220 with PVDF finger	FPM	C = 0.01	SS	426 872 P
8220 with PVDF finger	FPM	C = 0.1	SS	426 873 Q
8220 with PVDF finger	FPM	C = 1.0	SS	426 874 R
8220 with PVDF finger	FPM	C = 10	Titanium	426 875 J
8220 with PVDF finger	EPDM	C = 0.01	SS	426 876 K
8220 with PVDF finger	EPDM	C = 0.1	SS	426 877 L
8220 with PVDF finger	EPDM	C = 1.0	SS	426 878 V
8220 with PVDF finger	EPDM	C = 10	Titanium	426 879 W

TYPE DESCRIPTION 型号	Gasket 垫片	Sensor 传感器	Material Pt 1000 Pt100材料	ITEM - N o. 订货号
Conductivity sensor type 8220 long version (<500 m); PG 9 8220型长距离式 (<500m) 电导率传感器				
8220 with PVDF finger	FPM	C = 0.01	SS	426 880 L
8220 with PVDF finger	FPM	C = 0.1	SS	426 881 H
8220 with PVDF finger	FPM	C = 1.0	SS	426 882 A
8220 with PVDF finger	FPM	C = 10	Titanium	426 883 B
8220 with PVDF finger	EPDM	C = 0.01	SS	426 884 C
8220 with PVDF finger	EPDM	C = 0.1	SS	426 885 D
8220 with PVDF finger	EPDM	C = 1.0	SS	426 886 E
8220 with PVDF finger	EPDM	C = 10	Titanium	426 887 F
8221 Signal converter analog/digital				426 888 Q

TYPE DESCRIPTION 型号	Material 材质	Cable length 电缆长度	ITEM - N o. 订货号
Submersion Kit for Conductivity Transmitter 8225 and sensor 8200 用于8225型电导率变送器和8220型传感器的浸入式接头			
Immersion fitting	PP	0.5 m	419 567 W
Immersion fitting	PP	1.0 m	419 568 F
Immersion fitting	PP	1.5 m	419 569 G
Immersion fitting	PP	2.0 m	419 570 D
Extension cable 4-wire		0.5 m	419 574 V
Extension cable 4-wire		1.0 m	419 575 W
Extension cable 4-wire		1.5 m	419 576 X
Extension cable 4-wire		2.0 m	419 577 Y
Fixing Kit - Flange DN65 with SS-screws	PP		413 615 Q

Ordering Data of Stainless Steel 不锈钢接头订货数据 S020

Diameters 口径	Materials 材质	Item-No. 订货号
SS - Female G-Threaded Ports 不锈钢G内螺纹接口		
DN 32	SS, FPM	428 739 B
DN 40	SS, FPM	428 740 Q
DN 50	SS, FPM	428 741 D
SS - Female NPT-Threaded Ports 不锈钢NPT内螺纹接口		
DN 32	SS, FPM	428 745 H
DN 40	SS, FPM	428 746 A
DN 50	SS, FPM	428 747 B
SS - Female ISO7 (JIS) Threaded Ports 不锈钢ISO7(JIS)内螺纹接口		
DN 32	SS, FPM	428 751 F
DN 40	SS, FPM	428 752 G
DN 50	SS, FPM	428 753 H
SS- Male G Threaded Ports 不锈钢G外螺纹接口		
DN 32	SS, FPM	428 757 D
DN 40	SS, FPM	428 758 N
DN 50	SS, FPM	428 759 P
SS - Weld Ends 不锈钢焊接口		
DN 32	SS, FPM	428 763 B
DN 40	SS, FPM	428 764 C
DN 50	SS, FPM	428 765 D
SS - Tri-Clamp (ISO 2852) 不锈钢三夹式接口		
DN 32	SS, FPM	428 769 R
DN 40	SS, FPM	428 770 N
DN 50	SS, FPM	428 771 B
SS - DIN Flanges (DIN 2501) 不锈钢DIN法兰		
DN 32	SS, FPM	428 775 F
DN 40	SS, FPM	428 776 G
DN 50	SS, FPM	428 777 H
SS - Flanges (JIS 10K) 不锈钢法兰 (JIS 10K)		
DN 32	SS, FPM	431 056 M
DN 40	SS, FPM	431 057 N
DN 50	SS, FPM	431 058 X
SS - ANSI Flanges (ANSI B16-5-1988) 不锈钢ANSI法兰		
DN 32	SS, FPM	428 781 W
DN 40	SS, FPM	428 782 X
DN 50	SS, FPM	428 783 Y
SS - Weld-o-let 不锈钢焊接头		
DN 65	SS	418 112 M
DN 80	SS	418 113 N
DN 100	SS	418 114 P

Ordering Data of Brass Fittings Type S020 S020型 黄铜接头订货数据

Diameters 口径	Materials 材质	Item-No. 订货号
Brass - Female G-Threaded Ports 黄铜G内螺纹接口		
DN 32	Brass, FPM	428 715 T
DN 40	Brass, FPM	428 716 U
DN 50	Brass, FPM	428 717 V
Brass - Female NPT-Threaded Ports 黄铜NPT内螺纹接口		
DN 32	Brass, FPM	428 721 Z
DN 40	Brass, FPM	428 722 S
DN 50	Brass, FPM	428 723 T
Brass - Female ISO7 (JIS) Threaded Ports 黄铜ISO7(JIS)内螺纹接口		
DN 32	Brass, FPM	428 727 X
DN 40	Brass, FPM	428 728 G
DN 50	Brass, FPM	428 729 H
Brass - Male G/metric Threaded Ports 黄铜G外 / 公制螺纹接口		
DN 32	Brass, FPM	428 733 V
DN 40	Brass, FPM	428 734 W
DN 50	Brass, FPM	428 735 X


Ordering Data of Plastic Fittings Type S020 S020型塑料接头订货表

Diameters 通径	Materials 材质	Item-No. 订货号
PVC - True union DIN PVC DIN 油宁		
DN 15	PVC, FPM	430 837 L
DN 20	PVC, FPM	430 838 V
DN 25	PVC, FPM	430 839 W
DN 32	PVC, FPM	428 673 H
DN 40	PVC, FPM	428 674 A
DN 50	PVC, FPM	428 675 B
PVC - True union ASTM PVC ASTM 油宁		
1" 1/4"	PVC, FPM	428 685 W
1" 3/4"	PVC, FPM	428 686 X
2"	PVC, FPM	428 687 Y
PVC - True union JIS PVC JIS 油宁		
DN 32	PVC, FPM	429 081 M
DN 40	PVC, FPM	429 082 N
DN 50	PVC, FPM	429 083 P
PVC - Solvent Spigot PVC 粘接套管		
DN 32	PVC, FPM	428 679 P
DN 40	PVC, FPM	428 680 D
DN 50	PVC, FPM	428 681 S
PE - Weld-o-let PE 焊接头		
DN 65-100	PE	418 642 G

Diameters 通径	Materials 材质	Item-No. 订货号
PP - True Union with Threaded Port PP带螺纹接口油宁		
DN 15	PP, FPM	430 840 B
DN 20	PP, FPM	430 841 Y
DN 25	PP, FPM	430 842 Z
DN 32	PP, FPM	428 691 U
DN 40	PP, FPM	428 692 V
DN 50	PP, FPM	428 693 W
PP - Weld Ends PP焊接头		
DN 32	PP, FPM	428 697 S
DN 40	PP, FPM	428 698 B
DN 50	PP, FPM	428 699 C
PP - Weld-o-let PP焊接头		
DN 65-100	PP	418 650 L
PVDF - True Union with Threaded Port PVDF带螺纹接口油宁		
DN 15	PVDF, FPM	430 843 S
DN 20	PVDF, FPM	430 844 T
DN 25	PVDF, FPM	430 845 U
DN 32	PVDF, FPM	428 703 G
DN 40	PVDF, FPM	428 704 H
DN 50	PVDF, FPM	428 705 A
PVDF - Weld Ends PVDF焊接口		
DN 32	PVDF, FPM	428 709 N
DN 40	PVDF, FPM	428 710 A
DN 50	PVDF, FPM	428 711 X
PVDF - Weld-o-let PVDF焊接头		
DN 65-100	PVDF	418 658 Q

Technical Data 技术数据

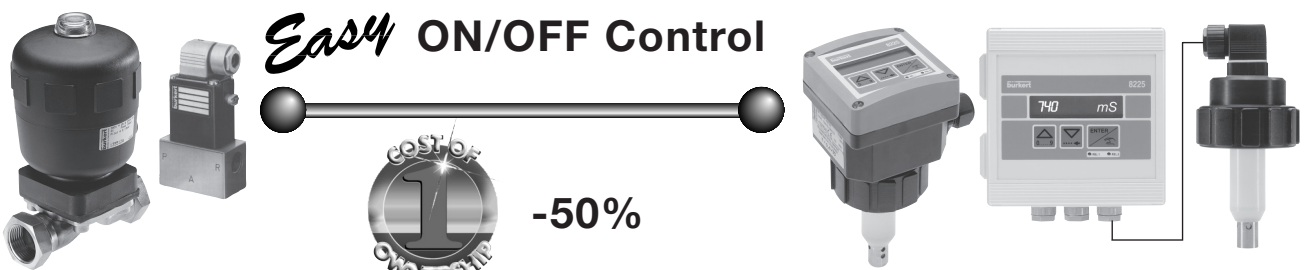
Easy ON/OFF Control



1
COST OF OWNERSHIP

-50%

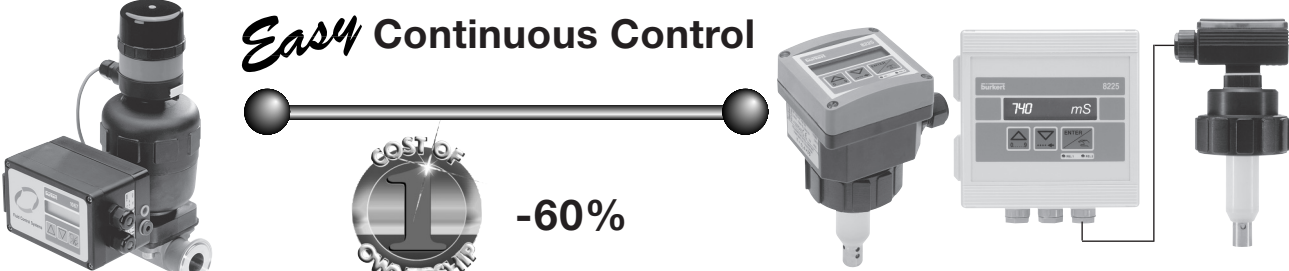
Easy ON/OFF Control



1
COST OF OWNERSHIP

-50%

Easy Continuous Control



1
COST OF OWNERSHIP

-60%

