

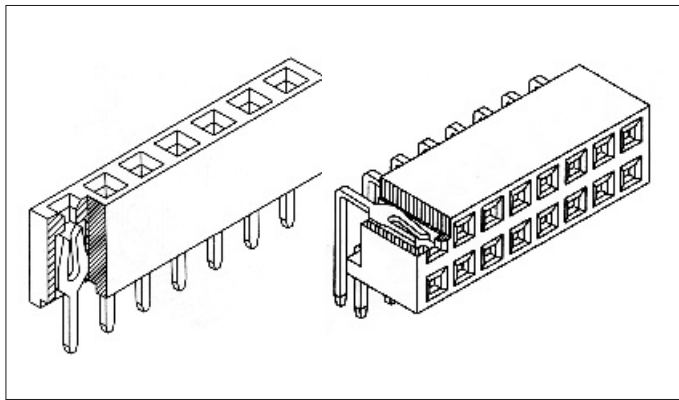
Female Header  
Single Row/ Dual Row  
DIP /Right Angle

Pitch:2.54 x2.54mm

Series  
218 219

**sgdconn**

Http://www.sgdconn.com

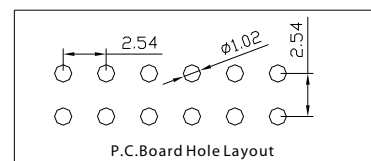
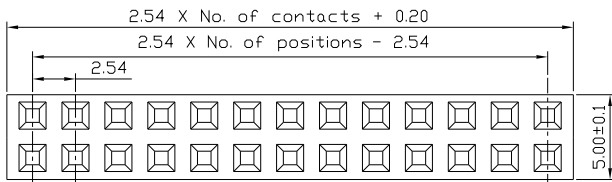
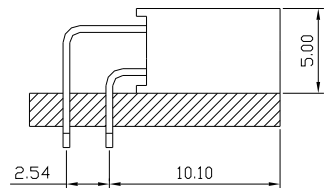
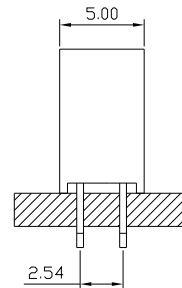
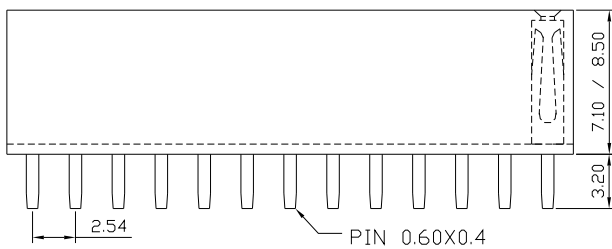
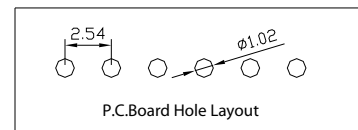
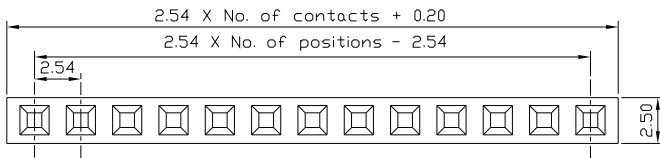
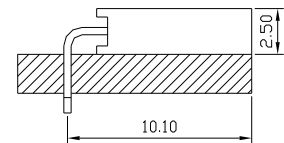
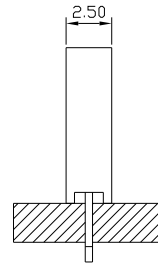
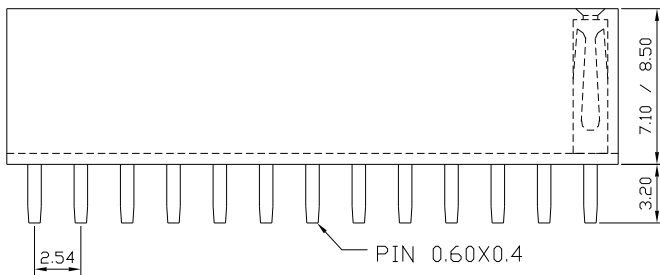


**SPECIFICATIONS:**

Current Rating: 3.0 AMP  
Contact Resistance: 30m• Max  
Insulation Resistance: 1000M• Min  
Withstand Voltage: 600VAC/minute  
Operation Temperature: -40°C to +105°C

**MATERIALS:**

Contact Material: Copper Alloy  
Contact Plating: Gold or Tin over 50μ " Ni  
Insulator: Glass Filled Polyester(UL94V-0)  
Standard: PBT



**Ordering Code**

① ② ③ ④ ⑤ ⑥ ⑦ ⑧ ⑨ ⑩  
2 1 8 X X X X X X 1 0

① Series No.:  
2= Female Header  
③ Insulator Height:  
8 = 8.5mm  
9 = 7.1mm  
② Pitch: 1= 2.54mm

④ Dip Spacing:  
1=Single row  
2=Double row

⑤ Number of Contacts:  
Single row ① to 40  
Double row=02 80

⑥ Tail & Mounting Style:  
S=Straight DIP type  
R=Right Angle Dip type  
M=Straight SMT type

⑦ Contact Plated  
0=Tin  
1=Gold Flash  
2=Gold 3u"  
3=Gold 5u"  
4=Gold 10u"  
5=Gold 15u"  
6= Gold 30u"

⑧ Material Type  
0=PPS  
1=PBT  
2=LCP  
3=Nylon-66  
4=Nylon-6T  
5=PA46

⑨ Color:1=Black  
⑩ Customer Request

Due to technical progress, all the information provided is subject to change without prior notice.