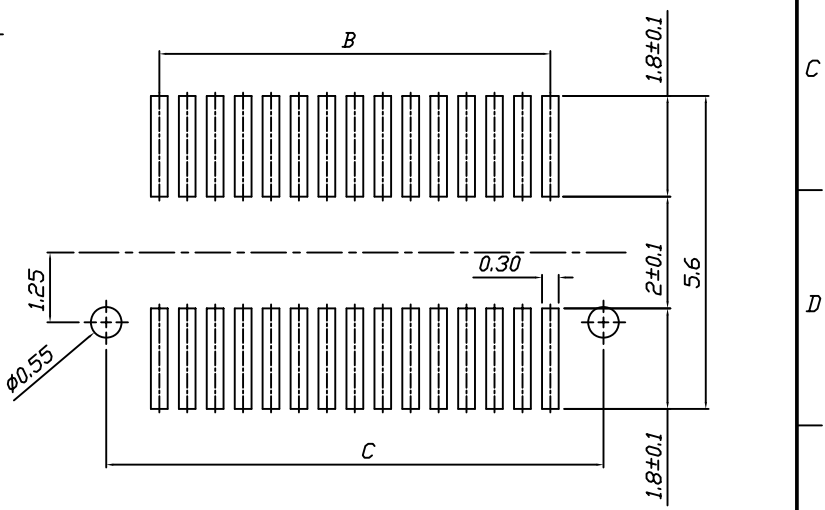



HIGH	SOCKET(H)	PLUG(H)
3.0	2.2	0.8
3.5	2.2	1.3
4.0	3.0	1.0
4.5	3.5	1.0
5.0	3.0	2.0
5.5	3.5	2.0
6.0	4.0	2.0
6.5	4.5	2.0

	A	B	C	D
08P	4.70	1.50	3.40	2.00
10P	5.20	2.00	3.90	2.50
12P	5.70	2.50	4.40	3.00
14P	6.20	3.00	4.90	3.50
16P	6.70	3.50	5.40	4.00
18P	7.20	4.00	5.90	4.50
20P	7.70	4.50	6.40	5.00
22P	8.20	5.00	6.90	5.50
24P	8.70	5.50	7.40	6.00
26P	9.20	6.00	7.90	6.50
28P	9.70	6.50	8.40	7.00
30P	10.20	7.00	8.90	7.50
32P	10.70	7.50	9.40	8.00
34P	11.20	8.00	9.90	8.50

	A	B	C	D
36P	11.70	8.50	10.40	9.00
38P	12.20	9.00	10.90	9.50
40P	12.70	9.50	11.40	10.00
42P	13.20	10.00	11.90	10.50
44P	13.70	10.50	12.40	11.00
46P	14.20	11.00	12.90	11.50
48P	14.70	11.50	13.40	12.00
50P	15.20	12.00	13.90	12.50
60P	17.70	14.50	16.40	15.00
70P	20.20	17.00	18.90	17.50
80P	22.70	19.50	21.40	20.00
90P	25.20	22.00	23.90	22.50
100P	27.70	25.40	26.40	25.00



P.C.B PATTEN

DRAWG NO		SOCKET		PA 9T		CS210R-SH : 10.2		TREATMENT	REFERENCE
PART NAME		MATERIAL		QUANTITY		SPECIFICATION			
THROUGH	UNIT	SCALE	TOLERANCE	 LinKwork	WK NAME		0.5mm SOCKET		
PROJECTION	mm	#/S	DRAW		PART NAME		0.5mm BOARD TO BOARD		
APPROVAL	CHECK	DESIGN			DRAWG NO.				
MARK	DATE	REVISION	SIGN						