



SAMSUNG LCD

Digital Window for Human Dream

LTI460AA04 Handling Guide

June, 2009

LCD Business
Samsung Electronics Co., Ltd.

LTI460AA04 Handling Guide

To prevent any failure caused by handling mistake, precautions are required.

1. Features of 46" Super narrow bezel

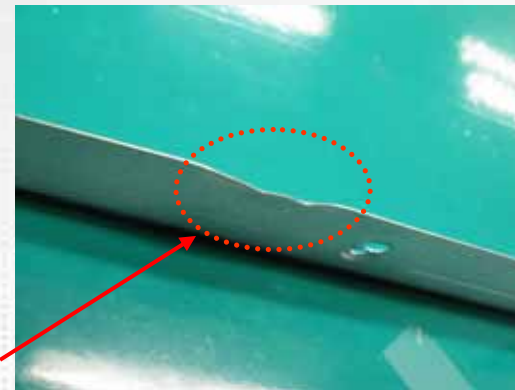
- 0.3mm thick Top chassis
- Very small design margin. (both panel and chassis design)

2. Estimated failure symptoms

- Glass broken
- Line defect caused by Driver IC Lead crack
- Top chassis damage such as bending and scratch.



Damaged Top Chassis



LTI460AA04 Handling Guide

3. Handling Guide

- Protect LCD module from external shock and vibration during transportation.
- Keep handling method and procedure as below picture.

