

APW Series

Features

- Ideal for a variety of DC-DC converter Inductors Applications. Available on tape and reel for automatic insertion. Low DC resistance and large permissible DC current. This can be surface mount assembly and reflow soldering is also possible.

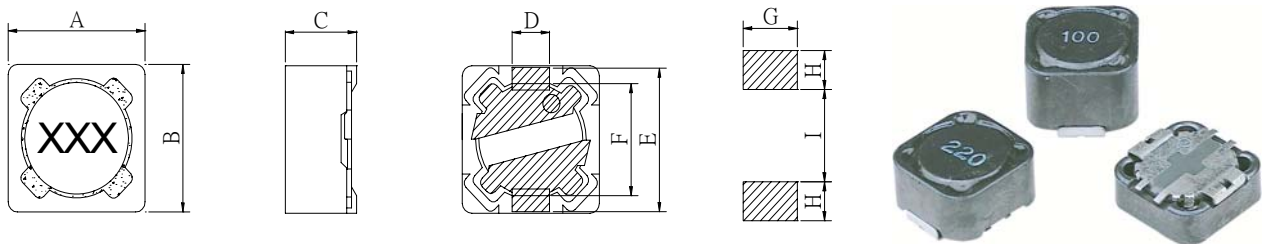
Applications

- Excellent for power line DC-DC conversion application used in hard disk, notebook computers and other electronic equipment.

Test Equipment and Conditions

- Inductance is measured with HP-4284A LCR meter or equivalent.
- Maximum allowable DC current is that which causes a 25% inductance reduction of the initial value, or coil temperature to rise by 40°C, whichever is smaller. (Reference ambient temperature 20°C)
- Operating temperature: -25°C ~ +85°C.

External Dimensions (Unit : mm)



Type	A	B	C	D	E	F	G	H	I
APW07A30	7.5Max	7.5Max	3.4Max	1.8	7.2	5.4	2.2	1.5	4.8
APW07A45	7.5Max	7.5Max	4.5Max	1.8	7.2	5.4	2.2	1.5	4.8
APW12A45	12.3Max	12.3Max	4.5Max	5.0	11.8	7.6	5.4	2.8	7.0
APW12A60	12.3Max	12.3Max	6.0Max	5.0	11.8	7.6	5.4	2.8	7.0
APW12A80	12.3Max	12.3Max	8.0Max	5.0	11.8	7.6	5.4	2.8	7.0

Part Number Code

APW 07 A 30 M 100
 A B C D E F

A: Type of product SMD Power inductor
 B: Dimensions(mm) 07: 7.5x7.5 12: 12.3x12.3
 C: Materials NO use
 D: Thickness(mm) 30: 3.4 45: 4.5
 E: Tolerance M: ±20% N: ±30%
 F: Inductance 100=10uH

APW Series

Part Number	Inductance (μH)	Test Frequency (KHz)	DC Resistance (Ω)Max	Rated DC Current (A)Max
APW07A30□-100	10	100	0.072	1.68
APW07A30□-120	12	100	0.098	1.52
APW07A30□-150	15	100	0.130	1.33
APW07A30□-180	18	100	0.140	1.20
APW07A30□-220	22	100	0.190	1.07
APW07A30□-270	27	100	0.210	0.96
APW07A30□-330	33	100	0.240	0.91
APW07A30□-390	39	100	0.320	0.77
APW07A30□-470	47	100	0.360	0.76
APW07A30□-560	56	100	0.470	0.68
APW07A30□-680	68	100	0.520	0.61
APW07A30□-820	82	100	0.690	0.57
APW07A30□-101	100	100	0.790	0.50
APW07A30□-121	120	100	0.890	0.49
APW07A30□-151	150	100	1.270	0.43
APW07A30□-181	180	100	1.450	0.39
APW07A30□-221	220	100	1.650	0.35
APW07A30□-271	270	100	2.310	0.32
APW07A30□-331	330	100	2.620	0.28
APW07A30□-391	390	100	2.940	0.26
APW07A30□-471	470	100	4.180	0.24
APW07A30□-561	560	100	4.670	0.22
APW07A30□-681	680	100	5.730	0.19
APW07A30□-821	820	100	6.540	0.18
APW07A30□-102	1000	100	9.440	0.16
APW07A45□-100	10	100	0.049	1.84
APW07A45□-120	12	100	0.063	1.71
APW07A45□-150	15	100	0.081	1.47
APW07A45□-180	18	100	0.091	1.31
APW07A45□-220	22	100	0.110	1.23
APW07A45□-270	27	100	0.150	1.12
APW07A45□-330	33	100	0.170	0.96
APW07A45□-390	39	100	0.230	0.91
APW07A45□-470	47	100	0.260	0.88
APW07A45□-560	56	100	0.350	0.75
APW07A45□-680	68	100	0.380	0.69
APW07A45□-820	82	100	0.450	0.61
APW07A45□-101	100	100	0.610	0.60
APW07A45□-121	120	100	0.660	0.52
APW07A45□-151	150	100	0.880	0.46
APW07A45□-181	180	100	0.980	0.42

APW Series

Part Number	Inductance (μH)	Test Frequency (KHz)	DC Resistance (Ω)Max.	Rated DC Current (A)Max
APW07A45□-221	220	100	1.170	0.36
APW07A45□-271	270	100	1.640	0.34
APW07A45□-331	330	100	1.860	0.32
APW07A45□-391	390	100	2.850	0.29
APW07A45□-471	470	100	3.010	0.26
APW07A45□-561	560	100	3.620	0.23
APW07A45□-681	680	100	4.630	0.22
APW07A45□-821	820	100	5.200	0.20
APW07A45□-102	1000	100	6.000	0.18
APW12A45□-2R2	2.2	100	0.008	7.00
APW12A45□-2R7	2.7	100	0.012	6.70
APW12A45□-3R5	3.5	100	0.015	6.60
APW12A45□-3R9	3.9	100	0.015	6.50
APW12A45□-4R7	4.7	100	0.018	5.60
APW12A45□-5R6	5.6	100	0.018	5.20
APW12A45□-6R8	6.8	100	0.022	4.90
APW12A45□-7R6	7.6	100	0.026	4.70
APW12A45□-8R2	8.2	100	0.026	4.60
APW12A45□-100	10	100	0.028	4.50
APW12A45□-120	12	100	0.038	4.00
APW12A45□-150	15	100	0.050	3.20
APW12A45□-180	18	100	0.057	3.10
APW12A45□-220	22	100	0.066	2.90
APW12A45□-270	27	100	0.080	2.80
APW12A45□-330	33	100	0.097	2.70
APW12A45□-390	39	100	0.132	2.10
APW12A45□-470	47	100	0.150	1.90
APW12A45□-560	56	100	0.180	1.80
APW12A45□-680	68	100	0.220	1.50
APW12A45□-820	82	100	0.260	1.30
APW12A45□-101	100	100	0.308	1.20
APW12A45□-121	120	100	0.380	1.10
APW12A45□-151	150	100	0.530	0.95
APW12A45□-181	180	100	0.620	0.85
APW12A45□-221	220	100	0.700	0.80
APW12A45□-271	270	100	0.875	0.60
APW12A45□-331	330	100	0.990	0.50
APW12A60□-1R8	1.8	10	0.005	8.00
APW12A60□-2R7	2.7	10	0.007	7.00
APW12A60□-3R9	3.9	10	0.009	6.00
APW12A60□-4R7	4.7	10	0.012	5.30

APW Series

Part Number	Inductance (μH)	Test Frequency (KHz)	DC Resistance (Ω)Max	Rated DC Current (A)Max
APW12A60□-6R1	6.1	10	0.013	4.80
APW12A60□-6R8	6.8	10	0.014	4.70
APW12A60□-7R6	7.6	10	0.017	4.50
APW12A60□-8R2	8.2	10	0.020	4.30
APW12A60□-100	10	10	0.025	4.00
APW12A60□-120	12	10	0.027	3.50
APW12A60□-150	15	10	0.030	3.30
APW12A60□-180	18	10	0.034	3.00
APW12A60□-220	22	10	0.036	2.80
APW12A60□-270	27	10	0.051	2.30
APW12A60□-330	33	10	0.060	2.10
APW12A60□-390	39	10	0.068	2.00
APW12A60□-470	47	10	0.075	1.80
APW12A60□-560	56	10	0.110	1.70
APW12A60□-680	68	10	0.120	1.50
APW12A60□-820	82	10	0.140	1.40
APW12A60□-101	100	10	0.180	1.30
APW12A60□-121	120	10	0.200	1.10
APW12A60□-151	150	10	0.230	1.00
APW12A60□-181	180	10	0.290	0.90
APW12A60□-221	220	10	0.450	0.80
APW12A60□-271	270	10	0.500	0.75
APW12A60□-331	330	10	0.590	0.68
APW12A60□-391	390	10	0.690	0.65
APW12A60□-471	470	10	0.770	0.58
APW12A60□-561	560	10	0.860	0.54
APW12A60□-681	680	10	1.200	0.48
APW12A60□-821	820	10	1.340	0.43
APW12A60□-102	1000	10	1.530	0.40
APW12A80□-1R2	1.2	10	0.007	9.80
APW12A80□-1R8	1.8	10	0.0115	8.00
APW12A80□-3R3	3.3	10	0.013	7.50
APW12A80□-4R7	4.7	10	0.015	6.80
APW12A80□-6R1	6.1	10	0.017	6.60
APW12A80□-7R6	7.6	10	0.020	5.90
APW12A80□-100	10	10	0.021	5.40
APW12A80□-120	12	10	0.024	4.90
APW12A80□-150	15	10	0.027	4.50
APW12A80□-180	18	10	0.039	3.90
APW12A80□-220	22	10	0.043	3.60
APW12A80□-270	27	10	0.045	3.40
APW12A80□-330	33	10	0.064	3.00
APW12A80□-390	39	10	0.072	2.75
APW12A80□-470	47	10	0.077	2.50
APW12A80□-560	56	10	0.097	2.35

APW Series

Part Number	Inductance (μ H)	Test Frequency (KHz)	DC Resistance (Ω)Max	Rated DC Current (A)Max
APW12A80□-680	68	10	0.10	2.10
APW12A80□-820	82	10	0.12	1.95
APW12A80□-101	100	10	0.15	1.70
APW12A80□-121	120	10	0.17	1.60
APW12A80□-151	150	10	0.19	1.42
APW12A80□-181	180	10	0.25	1.30
APW12A80□-221	220	10	0.35	1.16
APW12A80□-271	270	10	0.39	1.06
APW12A80□-331	330	10	0.48	0.95
APW12A80□-391	390	10	0.54	0.88
APW12A80□-471	470	10	0.79	0.79
APW12A80□-561	560	10	0.87	0.73
APW12A80□-681	680	10	1.00	0.67
APW12A80□-821	820	10	1.20	0.60
APW12A80□-102	1000	10	1.30	0.55