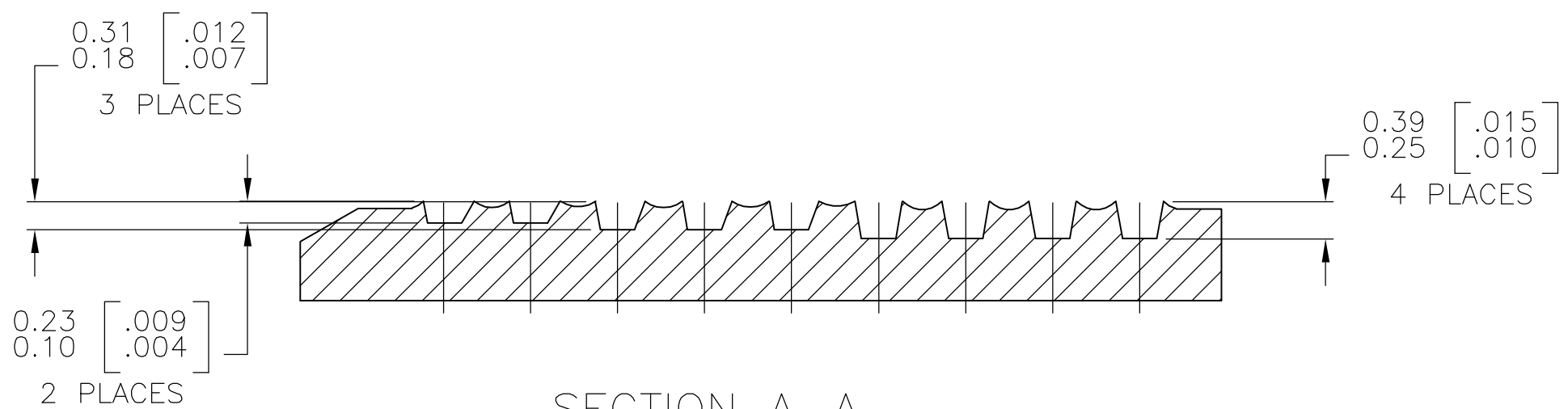
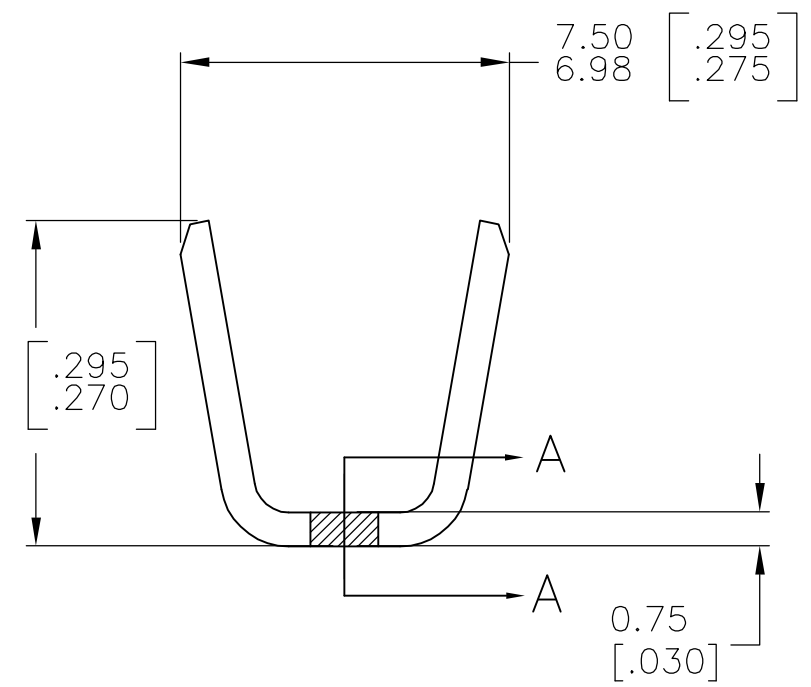
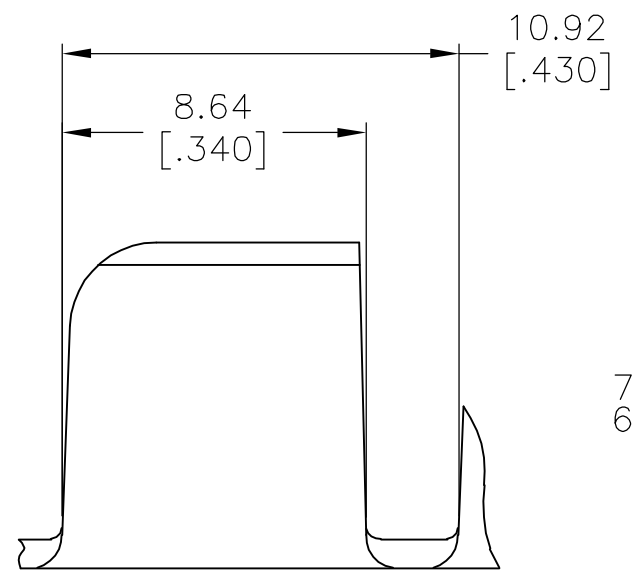
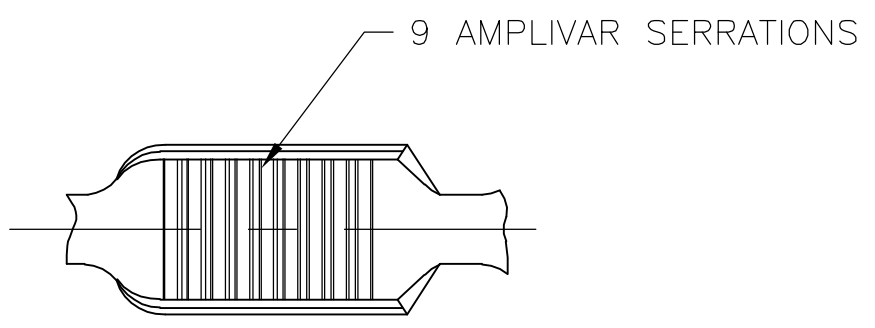


THIS DRAWING IS UNPUBLISHED. RELEASED FOR PUBLICATION
 © COPYRIGHT - BY TYCO ELECTRONICS CORPORATION. ALL RIGHTS RESERVED.

LOC	DIST	REVISIONS					
AF	50	P	LTR	DESCRIPTION	DATE	DWN	APVD
			D1	ECR-06-023927(REDRAWN IN AUTOCAD)	13NOV06	HMR	GP



SECTION A-A
SCALE 20:1

- CONTINUOUS STRIP ON REELS.
- DIMENSIONS IN BRACKETS ARE IN INCHES.
- WIRE RANGE: 10000-22000 CMA.
- CRIMP WIDTH: .250 F TYPE
 CRIMP HEIGHT $(\pm .002) = (\text{TOTAL CMA} + 34,100) / 428,500$
 GENERAL APPLICATION GUIDELINES MUST BE FOLLOWED AS SPECIFIED IN CATALOG #82221
 FOR APPLICATOR INFORMATION CALL: 1-800-722-1111
 FOR PRODUCT INFORMATION CALL: 1-800-522-6752

62311-2
PART NO

THIS DRAWING IS A CONTROLLED DOCUMENT.		DWN RAGHAVENDRA 13NOV06	tyco Tyco Electronics Corporation	
DIMENSIONS: mm [INCHES]		CHK G.D.PORTA	Harrisburg, PA 17105-3608	
TOLERANCES UNLESS OTHERWISE SPECIFIED:		APVD G.D.PORTA	NAME	
0 PLC ± -		PRODUCT SPEC	SPLICE, AMPLIVAR	
1 PLC ± -		APPLICATION SPEC	RESTRICTED TO	
2 PLC ± -		SIZE	CAGE CODE	DRAWING NO
3 PLC ± 0.38 [.015]		—	—	—
4 PLC ± -		WEIGHT	—	—
ANGLES ± 1' 0"		A3 00779 C-62311		
MATERIAL BRASS	FINISH TIN PLATE	CUSTOMER DRAWING		
		SCALE 6:1	SHEET 1 OF 1	REV D1