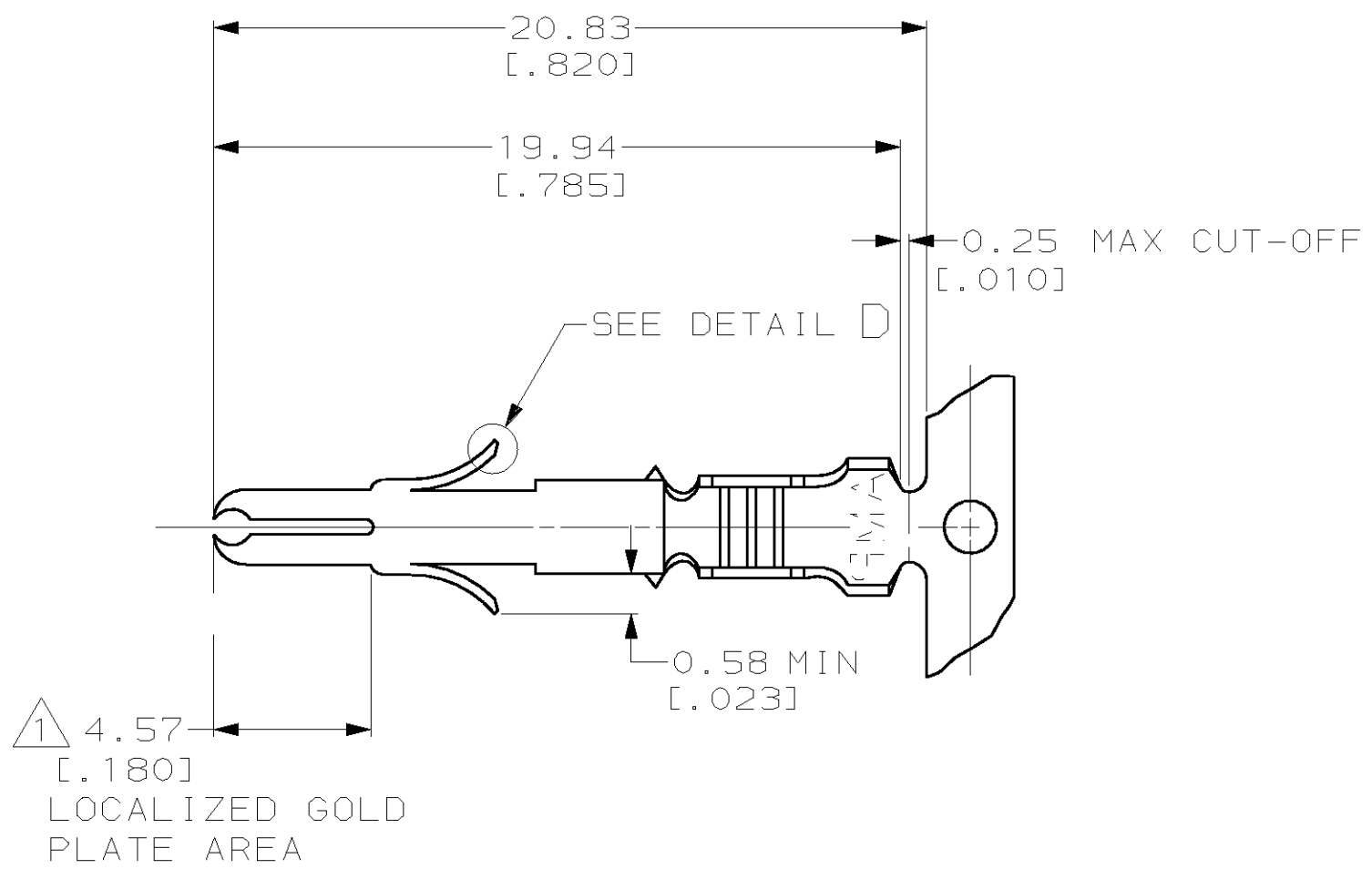
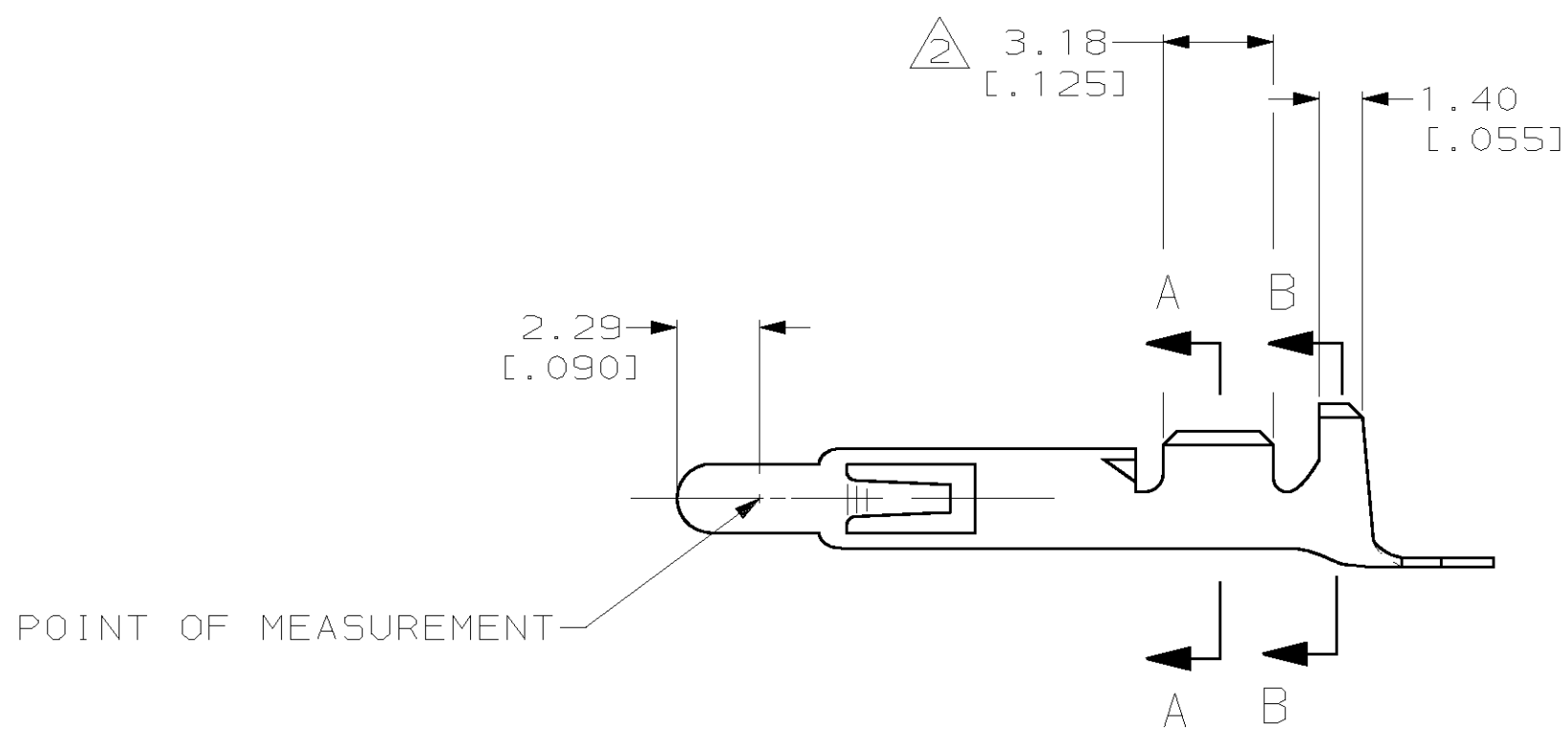
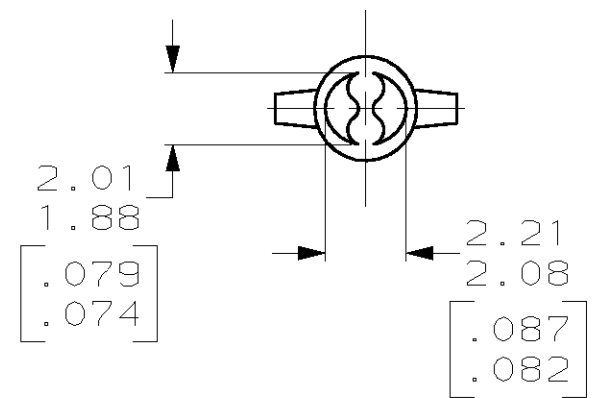


THIS DRAWING IS UNPUBLISHED. RELEASED FOR PUBLICATION
 BY AMP INCORPORATED. ALL RIGHTS RESERVED.

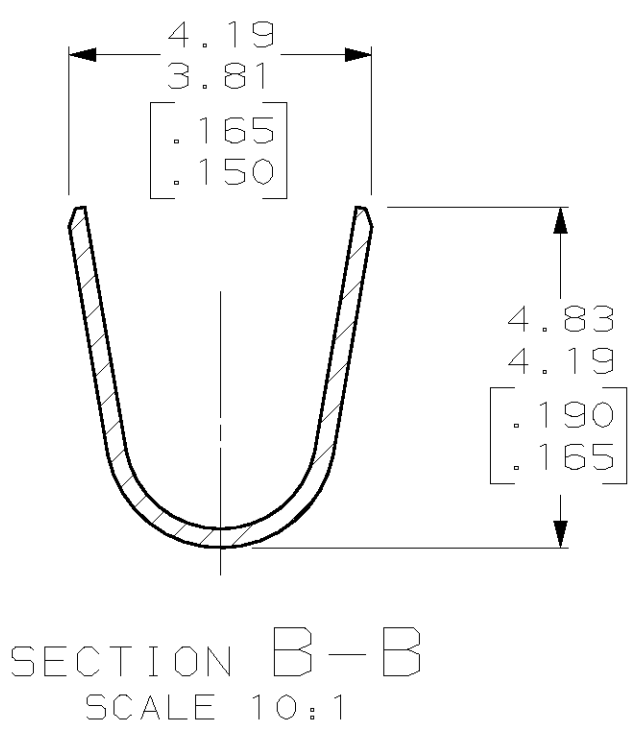
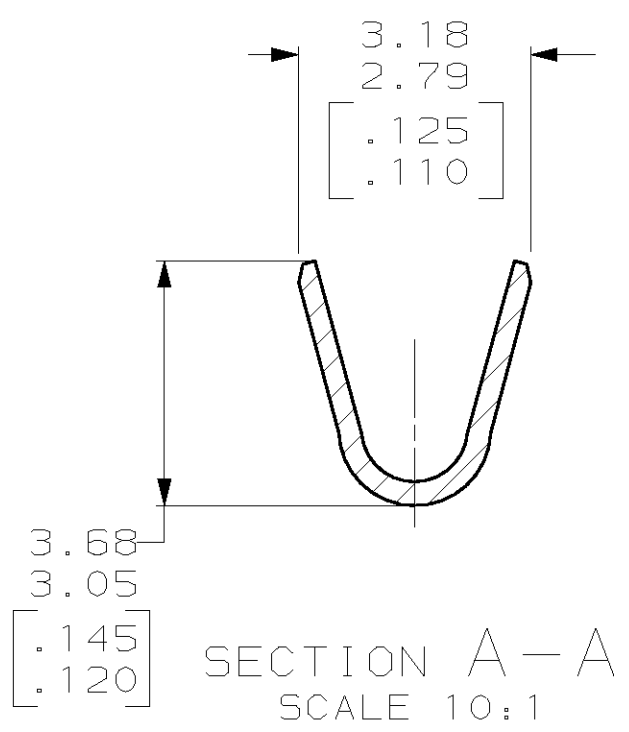
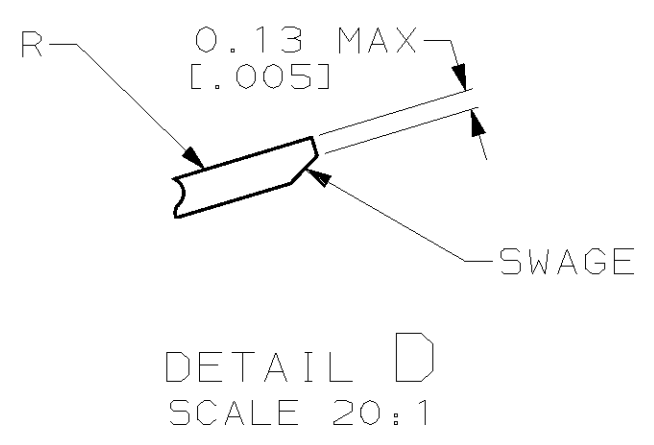
LOC	DIST	REVISIONS			
P	LTR	DESCRIPTION	DATE	DWN	APVD
CM	53	Y	REVISED PER EC 063B-0359-02	21-JUN-02	KW DC



- 1 PLATED WITH 0.00076 [.000030] GOLD, OVER 0.00127 [.000050] NICKEL UNDERPLATE.
- 2 PLATED INTERNALLY WITH 0.00076 [.000030] GOLD.
- 3. DIMENSIONS IN BRACKETS ARE IN INCHES.
- 4 PRELIMINARY, NOT FOR PRODUCTION.



POINT OF MEASUREMENT



LOOSE PIECE (REF)	MATERIAL	FINISH	PART NUMBER
4 -	0.31 [.012] BE CU	PRE-TIN	350687-9
350705-7	0.31 [.012] BRASS	GOLD 1	350687-7
4 -	0.31 [.012] PH BRZ	GOLD 1	350687-5
350705-2	0.31 [.012] BRASS	GOLD 1 2	350687-2
350705-1	0.31 [.012] BRASS	PRE-TIN	350687-1

METRIC

THIS DRAWING IS A CONTROLLED DOCUMENT.

DIMENSIONS: mm [INCHES]	TOLERANCES UNLESS OTHERWISE SPECIFIED:	DWN K. WHITAKER 12-MAY-2000	AMP AMP Incorporated Harrisburg, PA 17105-3608
	0 PLC ±	CHK K. COBLE 12-MAY-2000	
	1 PLC ±	APVD K. COBLE 12-MAY-2000	
	2 PLC ±0.13(.005)	NAME	
	3 PLC ±	PRODUCT SPEC	
4 PLC ±	ANGLES ±0°30'	APPLICATION SPEC	PIN, UNIVERSAL MATE-N-LOK™
WIRE RANGE 20-14 AWG	FINISH 3.30[.130] DIA MAX	WEIGHT -	SIZE A2 CAGE CODE 00779 DRAWING NO. 350687 RESTRICTED TO
CUSTOMER DRAWING			SCALE 5:1 SHEET 1 OF 1 REV Y

350687