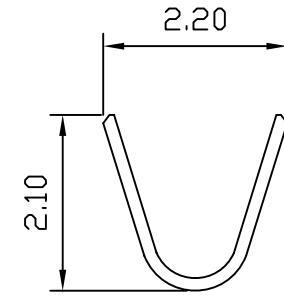
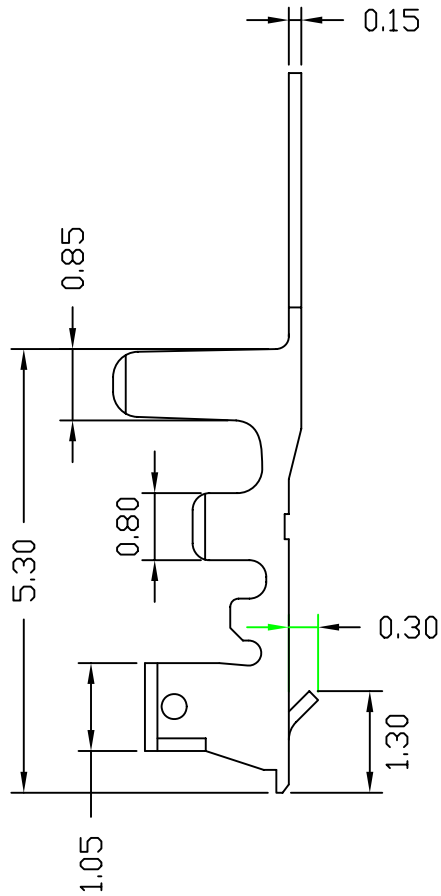
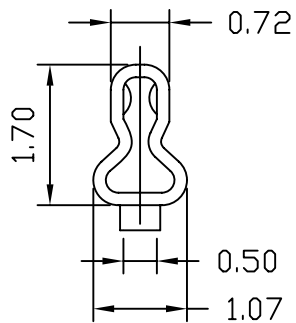
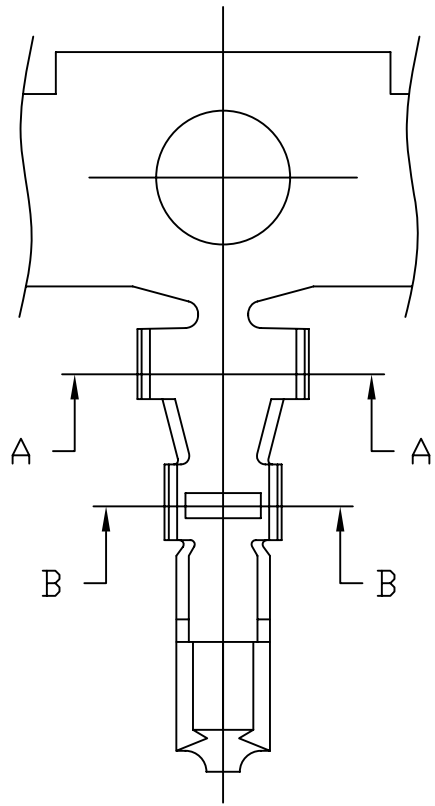
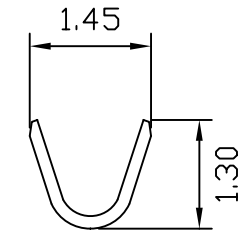


REV	DATE	DESCRIPTION	REVISOR
1.0			



SEC:A-A



SEC:B-B

CJT® CHANGJIANG CONNECTORS CO., LTD.
CHANGJIANG CONNECTORS

Ordering information & Specifications

Unit:mm

Part No	Wire Range	Insultion O.D.	Material	Finish	Qty/reel
A1502-TP	AWG#24-#28	1.10mm(max)	Phosphor Bronze	Tin-plated	10,000 pcs

Note:e-stamping before Tin-plated

Specification

Client:		Drawing No: A1502-T	
Tolerance	Draw By: LIZhiQiang	Date: 2008-05-15	Unit:mm Scale:Enone
X. X ≤ 0.25	Checked: HE.	Date: 2008-05-15	
X. XX ≤ 0.15	Approved:	Date:	
X. XXX ≤ 0.10	Material:	Edition: A	

REV	DATE	DESCRIPTION	REVISOR
1.0			

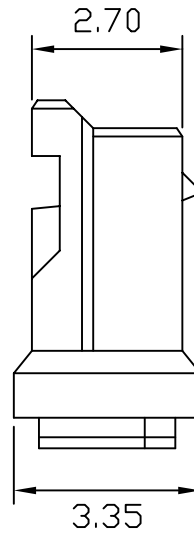
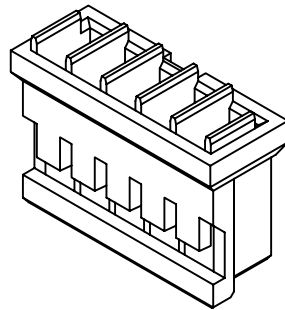
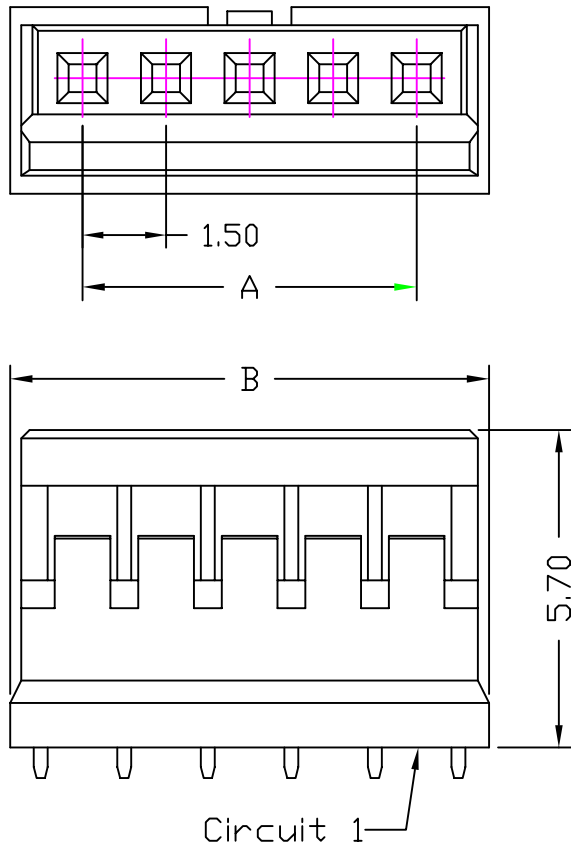
Specifications

Current Rating: 3A AC,DC
Voltage Rating: 350V AC,DC
Temperature Range: -25° C ~ +85° C
Contact Resistance: 20mΩ Max.
Insulation Resistance: 1000MΩ Min.
Withstanding Voltage: 500V AC/minute
Material: Nylon 66, UL94V-0
Color: Natural (White)

Ordering Information & Dimensions

PART NO.	Dimensions	
	A	B
A1502H-2P	1.50	4.10
A1502H-3P	3.00	5.60
A1502H-4P	4.50	7.10
A1502H-5P	6.00	8.60
A1502H-6P	7.50	10.10
A1502H-7P	9.00	11.60
A1502H-8P	10.50	13.10
A1502H-9P	12.00	14.60
A1502H-10P	13.50	16.10
A1502H-11P	15.00	17.60
A1502H-12P	16.50	19.10
A1502H-13P	18.00	20.60
A1502H-14P	19.50	22.10
A1502H-15P	21.00	23.60

Unit: mm

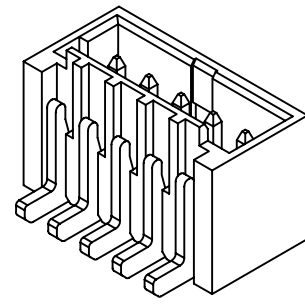


CJT[®] CHANGJIANG CONNECTORS CO., LTD.
CHANGJIANG CONNECTORS

Specification

Client:		Drawing No: A1502H-NP	
Tolerance	Draw By: LIZhiQiang	Date: 2008-05-15	Unit:mm Scale:Enone
X. X ≤ 0.25	Checked: HE.	Date: 2008-05-15	
X. XX ≤ 0.15	Approved:	Date:	
X. XXX ≤ 0.10	Material:	Edition: A	

REV	DATE	DESCRIPTION	REVISOR
1.0			

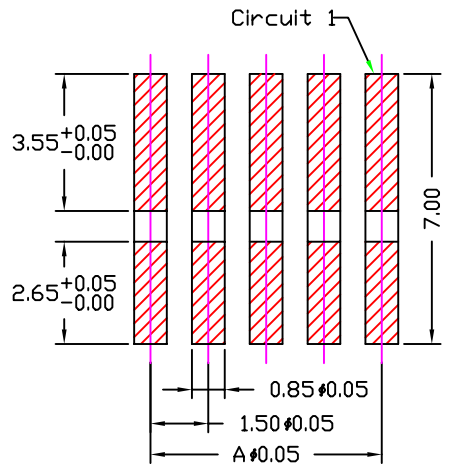
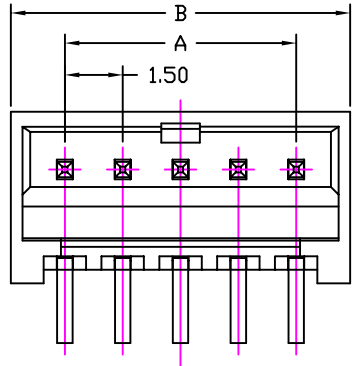


SPECIFICATIONS
 Current Rating: 3A AC,DC
 Voltage Rating: 350V AC,DC
 Temperature Range: -25°C ~ +85°C
 Contact Resistance: 20mΩ Max.
 Insulation Resistance: 1000MΩ Min.
 Withstanding Voltage: 500V AC/minute
 Pin Material: Brass/Tin-plated
 Material: Nylon 6T,UL94V-0
 Color: Natural(Beige)

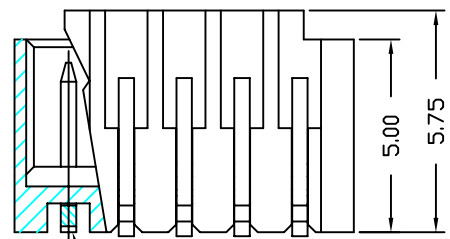
Ordering Information & Dimensions

PART NO.	Dimensions	
	A	B
A1502WV-S-2P	1.50	4.30
A1502WV-S-3P	3.00	5.80
A1502WV-S-4P	4.50	7.30
A1502WV-S-5P	6.00	8.80
A1502WV-S-6P	7.50	10.30
A1502WV-S-7P	9.00	11.80
A1502WV-S-8P	10.50	13.30
A1502WV-S-9P	12.00	14.80
A1502WV-S-10P	13.50	16.30
A1502WV-S-11P	15.00	17.80
A1502WV-S-12P	16.50	19.30
A1502WV-S-13P	18.00	20.80
A1502WV-S-14P	19.50	22.30
A1502WV-S-15P	21.00	23.80

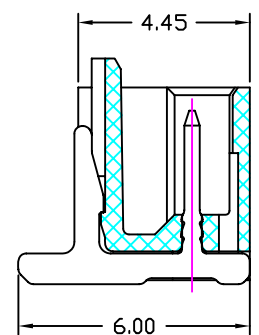
Unit: mm



PCB LAYOUT



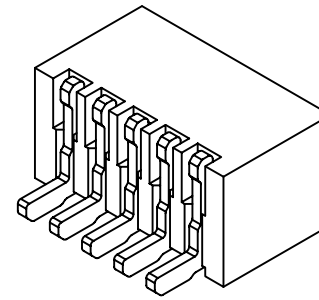
Circuit 1



Specification

Client:		Drawing No: A1502WV-S-NP	
Tolerance	Draw By: LIZhiQiang	Date: 2008-05-15	Unit:mm Scale:Enone
X.X ≤ 0.25	Checked: HE.	Date: 2008-05-15	
X.XX ≤ 0.15	Approved:	Date:	
X.XXX ≤ 0.10	Material:	Edition: A	

REV	DATE	DESCRIPTION	REVISOR
1.0			

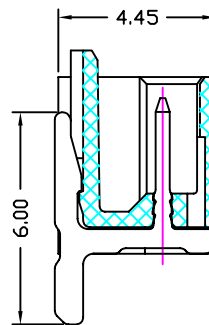
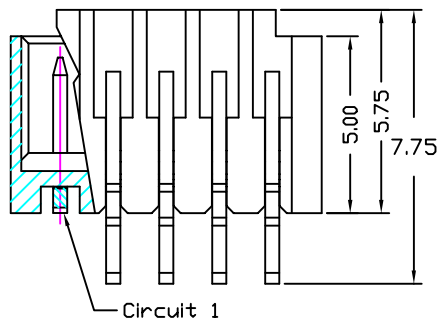
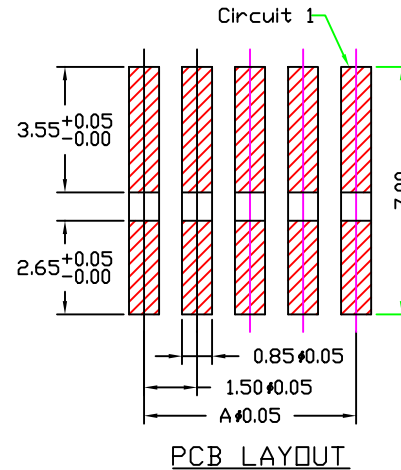
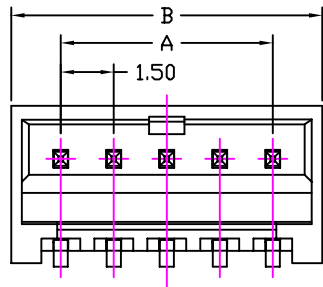


SPECIFICATIONS
 Current Rating: 3A AC,DC
 Voltage Rating: 350V AC,DC
 Temperature Range: -25°C ~ +85°C
 Contact Resistance: 20mΩ Max.
 Insulation Resistance: 1000MΩ Min.
 Withstanding Voltage: 500V AC/minute
 Pin Material: Brass/Tin-plated
 Material: Nylon 6T,UL94V-0
 Color: Natural(Beige)

Ordering Information & Dimensions

PART NO.	Dimensions	
	A	B
A1502WR-S-2P	1.50	4.30
A1502WR-S-3P	3.00	5.80
A1502WR-S-4P	4.50	7.30
A1502WR-S-5P	6.00	8.80
A1502WR-S-6P	7.50	10.30
A15021WR-S-7P	9.00	11.80
A1502WR-S-8P	10.50	13.30
A1502WR-S-9P	12.00	14.80
A1502WR-S-10P	13.50	16.30
A1502WR-S-11P	15.00	17.80
A1502WR-S-12P	16.50	19.30
A1502WR-S-13P	18.00	20.80
A1502WR-S-14P	19.50	22.30
A1502WR-S-15P	21.00	23.80

Unit: mm



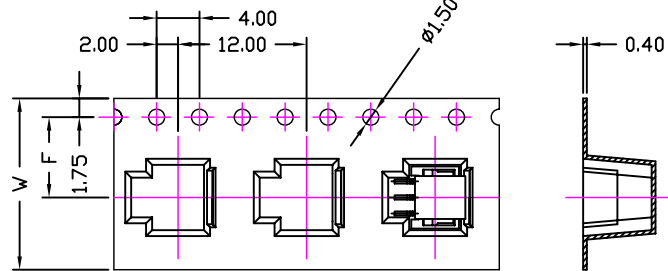
CJT® CHANGJIANG CONNECTORS CO., LTD.
 CHANGJIANG CONNECTORS

Specification

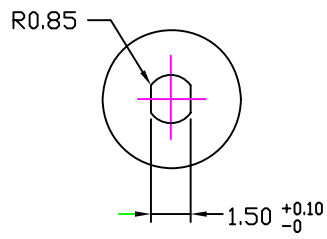
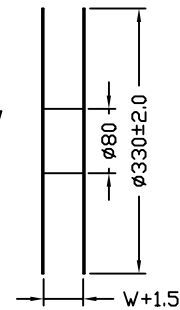
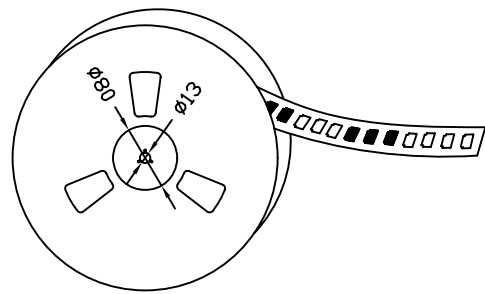
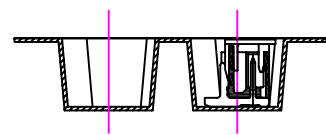
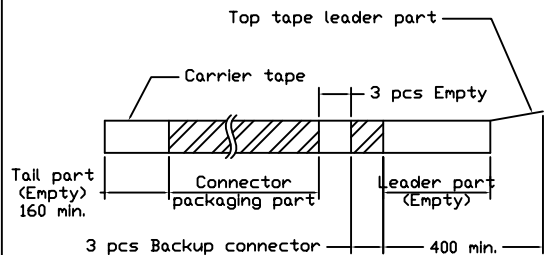
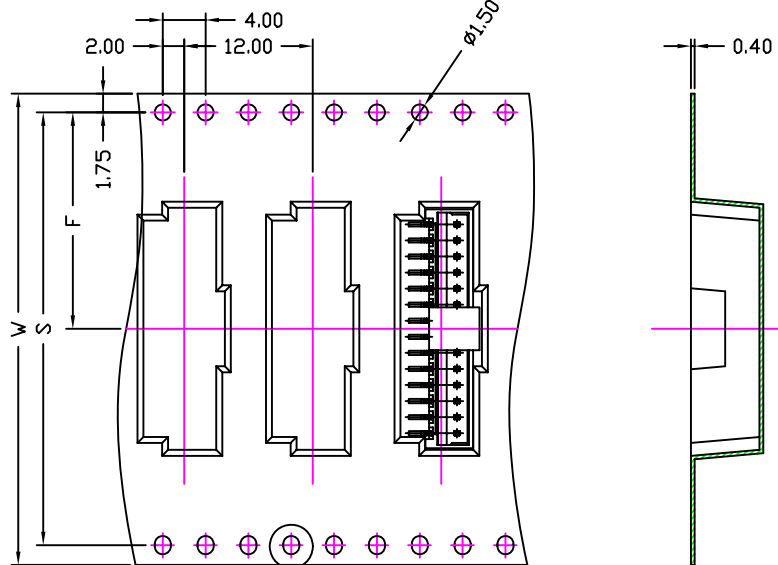
Client:		Drawing No: A1502WR-S-NP	
Tolerance	Draw By: LIZhiQiang	Date: 2008-05-15	Unit:mm Scale:Enone
X.X ≤ 0.25	Checked: HE.	Date: 2008-05-15	
X.XX ≤ 0.15	Approved:	Date:	
X.XXX ≤ 0.10	Material:	Edition: A	

REV	DATE	DESCRIPTTON	REVISER
1.0			

02~09 Contacts



10~15 Contacts



Number of Contacts	W±0.3	F±0.1	S±0.1	Q'ty/Reel
02P	16	7.50		500
03P	16	7.50		500
04P	16	7.50		500
05P	24	11.50		500
06P	24	11.50		500
07P	24	11.50		500
08P	24	11.50		500
09P	24	11.50		500
10P	32	14.20	28.40	500
11P	32	14.20	28.40	500
12P	32	14.20	28.40	500
13P	32	14.20	28.40	500
14P	44	20.20	40.40	500
15P	44	20.20	40.40	500

CJT® CHANGJIANG CONNECTORS CO., LTD.
CHANGJIANG CONNECTORS

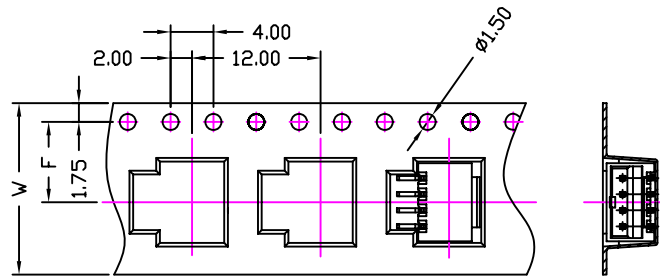
Specification

Client:		Drawing No: A1502WV-S-NP	
Tolerance	Draw By: LIZhiQiang	Date: 2008-05-15	Unit:mm Scale:Enone
X. X ≤ 0.25	Checked: HE.	Date: 2008-05-15	
X. XX ≤ 0.15	Approved:	Date:	
X. XXX ≤ 0.10	Material:	Edition: A	

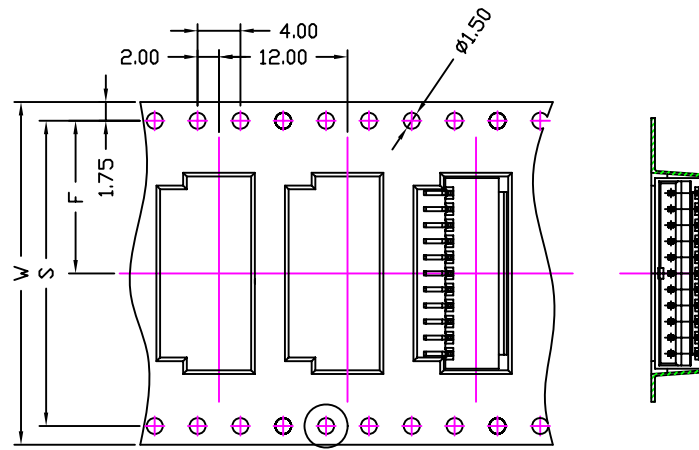
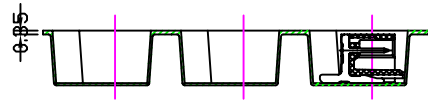
10~15 Contacts

REV	DATE	DESCRIPTION	REVISOR
1.0			

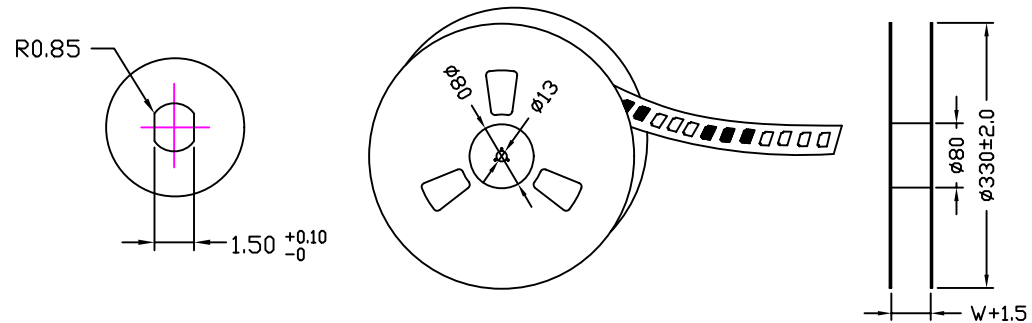
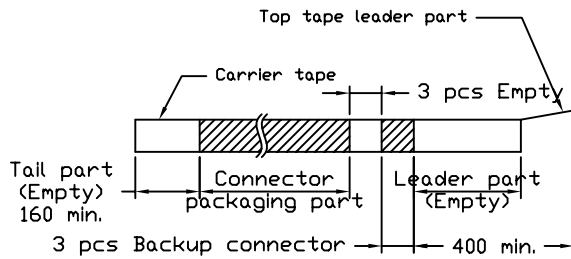
2~9 Contacts



Unreeling direction →



Unreeling direction →



Number of Contacts	W±0.3	F±0.1	S±0.1	Q'ty/Reel
02P	12	5.50		1,000
03P	16	7.50		1,000
04P	16	7.50		1,000
05P	16	7.50		1,000
06P	24	11.50		1,000
07P	24	11.50		1,000
08P	24	11.50		1,000
09P	24	11.50		1,000
10P	24	11.50		1,000
11P	32	14.20		28.40
12P	32	14.20	28.40	1,000
13P	32	14.20	28.40	1,000
14P	44	20.20	40.40	1,000
15P	44	20.20	40.40	1,000

CJT CHANGJIANG CONNECTORS CO., LTD.
CHANGJIANG CONNECTORS

Specification

Client:		Drawing No: A1502WV-S-NP	
Tolerance	Draw By: LIZhiQiang	Date: 2008-05-15	Unit:mm Scale:Enone
X. X ≤ 0.25	Checked: HE.	Date: 2008-05-15	
X. XX ≤ 0.15	Approved:	Date:	
X. XXX ≤ 0.10	Material:	Edition: A	