



## MYJCD Series CD43

### ◆ Product Description

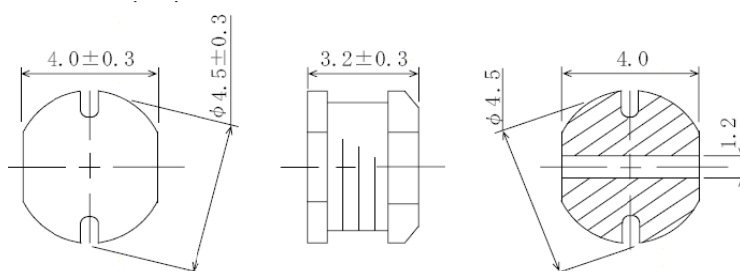
- $4.8 \times 4.3\text{mm}$  Max.(L×W), 3.5mm Max. Height.
- Inductance range:  $1.0 \sim 1000 \mu\text{H}$
- Rated current range:  $0.57 \sim 3.8\text{A}$
- In addition to the standard versions of inductors shown here, custom inductors are available to meet your exact requirements.



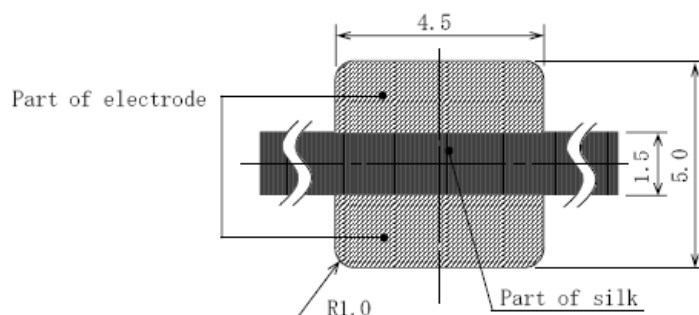
### ◆ Feature

- Magnetically unshielded construction.
- Ideally used in Mobilephone, PDA, MP3, DSC/DVC, HDD, Portable DVD, etc as DC-DC Converter inductors.
- RoHS Compliance

### ◆ Dimensions (mm)



### ◆ Land Pattern (mm)



Please refer to the sales offices on our website for a representative near you

<http://www.maiyaji.com>



MYJCD Series CD43

◆ Specification

Inductance ( $\mu$ H)	Inductance tolerance	Test frequency L (kHz)	DC resistance ( $\Omega$ ) $\pm$ 20%	Rated current(A)* max.		Part No.
				Based on inductance change	Based on temperature rise	
1.0	20%	100KHz	0.033	3.6	3.8	MYJCD43T-1R0M-PF
1.4	20%	100KHz	0.038	3.0	3.3	MYJCD43T-1R4M-PF
1.8	20%	100KHz	0.042	2.7	2.9	MYJCD43T-1R8M-PF
2.2	20%	100KHz	0.047	2.3	2.6	MYJCD43T-2R2M-PF
2.7	20%	100KHz	0.052	2.0	2.3	MYJCD43T-2R7M-PF
3.3	20%	100KHz	0.058	1.9	2.1	MYJCD43T-3R3M-PF
3.9	20%	100KHz	0.076	1.8	1.9	MYJCD43T-3R9M-PF
4.7	20%	100KHz	0.094	1.5	1.7	MYJCD43T-4R7M-PF
5.6	20%	100KHz	0.101	1.4	1.6	MYJCD43T-5R6M-PF
6.8	20%	100KHz	0.117	1.2	1.4	MYJCD43T-6R8M-PF
8.2	20%	100KHz	0.132	1.1	1.3	MYJCD43T-8R2M-PF
10.	20%	100KHz	0.182	1.0	1.15	MYJCD43T-100M-PF
12.	20%	100KHz	0.210	0.97	1.05	MYJCD43T-120M-PF
15.	20%	100KHz	0.235	0.9	0.92	MYJCD43T-150M-PF
18.	20%	100KHz	0.338	0.82	0.84	MYJCD43T-180M-PF
22.	20%	100KHz	0.378	0.74	0.76	MYJCD43T-220M-PF
27.	20%	100KHz	0.522	0.69	0.71	MYJCD43T-270M-PF
33.	10%	100KHz	0.540	0.62	0.64	MYJCD43T-330K-PF
39.	10%	100KHz	0.587	0.57	0.59	MYJCD43T-390K-PF
47.	10%	100KHz	0.844	0.50	0.54	MYJCD43T-470K-PF
56.	10%	100KHz	0.937	0.47	0.50	MYJCD43T-560K-PF
68.	10%	100KHz	1.117	0.45	0.48	MYJCD43T-680K-PF
82.	10%	100KHz	1.200	0.42	0.46	MYJCD43T-820K-PF
100.	10%	100KHz	1.710	0.36	0.39	MYJCD43T-101K-PF
120.	10%	100KHz	1.040	0.17	0.30	MYJCD43T-121K-PF
150.	10%	100KHz	2.19	0.15	0.16	MYJCD43T-151K-PF
180.	10%	100KHz	3.69	0.10	0.13	MYJCD43T-181K-PF
220.	10%	100KHz	5.21	0.095	0.097	MYJCD43T-221K-PF
270.	10%	100KHz	5.79	0.090	0.095	MYJCD43T-271K-PF
330.	10%	100KHz	7.32	0.083	0.085	MYJCD43T-331K-PF
390.	10%	100KHz	9.74	0.080	0.083	MYJCD43T-391K-PF
470.	10%	100KHz	11.5	0.075	0.078	MYJCD43T-471K-PF
680.	10%	100KHz	12.3	0.066	0.069	MYJCD43T-681K-PF
820.	10%	100KHz	13.0	0.059	0.062	MYJCD43T-821K-PF
1000.	10%	100KHz	14.0	0.05	0.057	MYJCD43T-102K-PF

This indicates the value of current when the inductance is 10% lower than its initial value at D.C

Superposition or D.C.current when at  $\Delta t=40^{\circ}\text{C}$  whichever is lower.

