

MYKIA

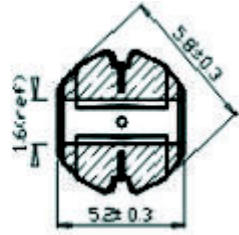
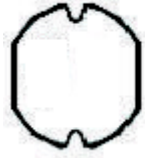
贴片电感;贴片功率电感本产品有精度高,体积小,耐电流高等特点

详细说明

1. 图型及尺寸(SHAPE AND SIZE)(单位 mm)

类型 ABCD ref

MSD54 5.8±0.35.2±0.34.5±0.31.3



2. 五环编号表示

MSD 54 — 221 K

(1) (2) (3) (4)

(1). 编号(Type): MSD32/43/52/53/54/73/75/104/105 (MSD)

(2). 尺寸(Size): 成品外型尺寸 (According to size) (54)

(3). 标称电感值(Inductance): "221"表示 220uH (Example: "221"for 220uH) (221)

(4). 电感公差 (Tolerance): "M":±20%, "K":±10%, "J":±5% (K)

3. 详细规格



PART NUMBER	INDUCTANCE(μH)	DCR(max)	IDC(max)(A)	TEST FREQ.
MSD54T-1R0M	1.0	0.015	5.90	100KHz
MSD54T-1R5M	1.5	0.025	4.70	100KHz
MSD54T-2R2M	2.2	0.035	3.80	100KHz
MSD54T-3R3M	3.3	0.045	3.30	100KHz
MSD54T-4R7M	4.7	0.060	2.80	100KHz
MSD54T-6R8M	6.8	0.080	2.10	100KHz
MSD54T-100M	10	0.10	1.44	100KHz
MSD54T-150M	15	0.14	1.30	100KHz
MSD54T-220M	22	0.18	1.11	100KHz
MSD54T-330M	33	0.23	0.88	100KHz
MSD54T-470M	47	0.37	0.72	100KHz
MSD54T-680M	68	0.46	0.61	100KHz
MSD54T-101M	100	0.70	0.52	100KHz
MSD54T-151M	150	1.10	0.40	100KHz
MSD54T-221M	220	1.57	0.35	100KHz
MSD54T-331M	330	1.70	0.28	100KHz
MSD54T-471M	470	2.30	0.23	100KHz
MSD54T-681M	680	3.00	0.19	100KHz
MSD54T-821M	820	4.50	0.16	100KHz
MSD54T-102M	1000	4.80	0.14	100KHz

This indicates the value of current when the inductance is 10% lower than its initial value at D.C

Superposition or D.C.current when at Δt=40°C whichever is lower.

直流重叠特性,规格内之 IDC 通过时电感值变化在初始值的-10%以内,温升 40°C 以内

以上资料仅供技术参考,如有变更请恕不另行通知!