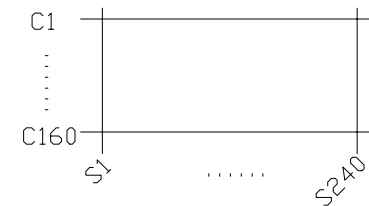
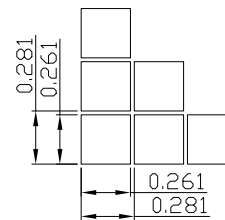


PIN	SYMBOL	PIN	SYMBOL
1	A0	21	IF3
2	/WR	22	XCS
3	D0	23	VDD
4	D1	24	VSS
5	D2	25	VDD2
6	D3	26	C7P
7	D4	27	C5P
8	D5	28	C3P
9	D6	29	C1N
10	D7	30	C1P
11	D8	31	C2P
12	D9	32	C2N
13	D10	33	C4P
14	D11	34	C6P
15	D12	35	VLCD
16	D13	36	V4
17	D14	37	V3
18	D15	38	V2
19	/RD	39	V1
20	/RST	40	V0



Panel Wiring Details
Scale=free



Pixels Details
Scale=25/1

Note:

- *1. LCD Display Type : FSTN, Positive, Transflective
- *2. Viewing Direction : 6H
- *3. Duty : 1/160; Bias : 1/12
- *4. Operating Voltage : 3.3V
- *6. Operating Temperature : -10°C~60°C
- *7. Storage Temperature : -20°C~70°C
- *8. Control/Drive IC : ST7529

HOT DISPLAY

Dwg Title HTG240160C Outline DWG			
Dwg No. 060120(Rev.01)		Date 2007-05-08	
Scale 6/5	Unit mm	Tol. ±0.5	
Drawn JACK	Checked	Approved	