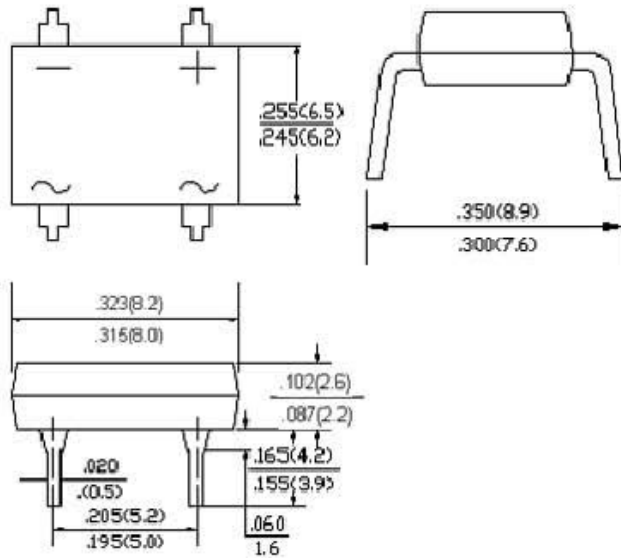


DB101 THRU DB107

玻璃钝桥式整流器 GLASS PASSIVATED BRIDGE RECTIFIERS

特征 FEATURES

- Plastic package has Underwriters Laboratory Flammability Classification 94V-0
- High surge current capability
- UL file number:E252843
- High temperature soldering guaranteed: 250°C/10 seconds at 5 lbs.(2.3kg)tension



DB-1 Unit: inch(mm)

机械数据 MECHANICAL DATA

- CASE:** Molded plastic body over passivated junctions
Terminals: plated leads solderable per MIL -STD-750, Method 2026
Polarity: Polarity symbols marked on body
Mounting Position: Any
Weight: 0.012 ounce, 0.34grams

极限值和电参数 TA=25°C 除非另有规定

Maximum Ratings & Electrical Characteristics Ratings at 25°C ambient temperature unless otherwise specified

	SYMB OLS	DB 101	DB 102	DB 103	DB 104	DB 105	DB 106	DB 107	UNITS
最大可重复峰值反向电压 Maximum repetitive peak reverse voltage	VRRM	50	100	200	400	600	800	1000	Volts
最大均方根电压 Maximum RMS voltage	VRMS	35	70	140	280	420	560	700	Volts
最大直流阻断电压 maximum DC blocking voltage	VDC	50	100	200	400	600	800	1000	Volts
最大正向平均整流电流 Maximum average forward output rectified current at TA=40°C	I(AV)	1							Amp
正向峰值浪涌电流 8.3ms 单一正弦半波 Peak forward surge current 8.3ms single half sine-wave	IFSM	50.0							Amps
最大正向电压降 Maximum forward voltage @IF=1.0A	VF	1.1							Volts
最大反向漏电流 TA=25°C Maximum reverse voltage TA=125°C	IR	5.0 500							uA
典型结电容 Type junction capacitance VR=4.0V f=1.0MHZ	CJ	150.0							pF
工作温度和存储温度 Operating junction and storage temperature range	TJ,TSTG	-55 to +150							°C

RATING AND CHARACTERISTIC CURVES (DB101 THRU DB107)

FIG.1-TYPICAL FORWARD CURRENT DERATING CURVE

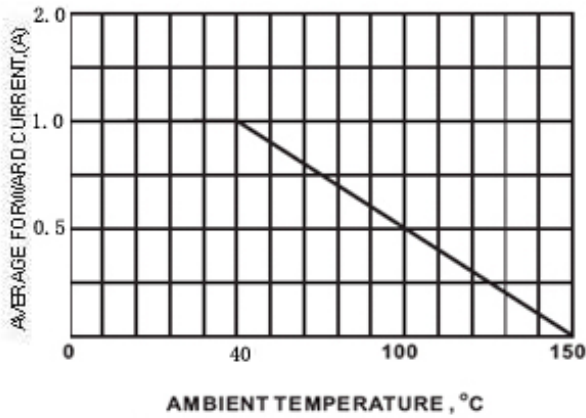


FIG.2-MAXIMUM NON-REPETITIVE FORWARD SURGE CURRENT

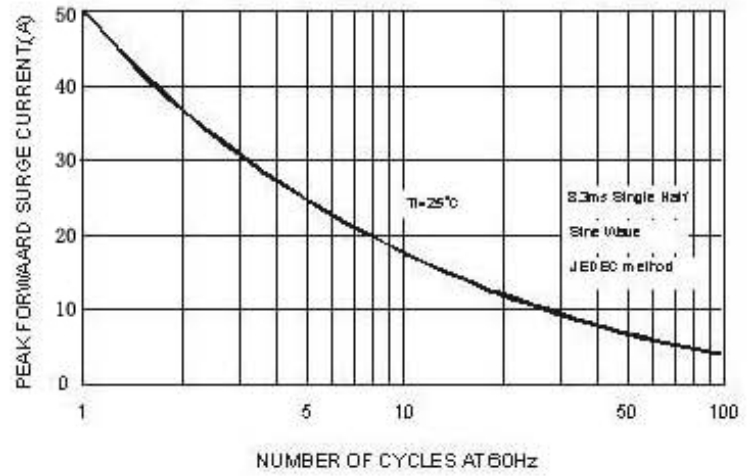


FIG.3-TYPICAL FORWARD CHARACTERISTICS

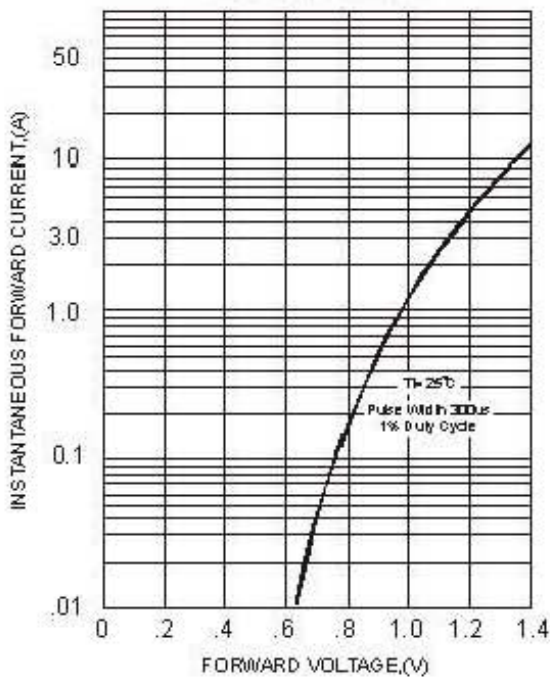


FIG.4-TYPICAL REVERSE CHARACTERISTICS

