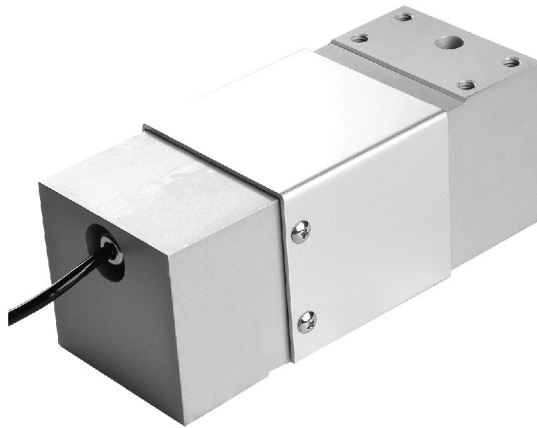


# FAY



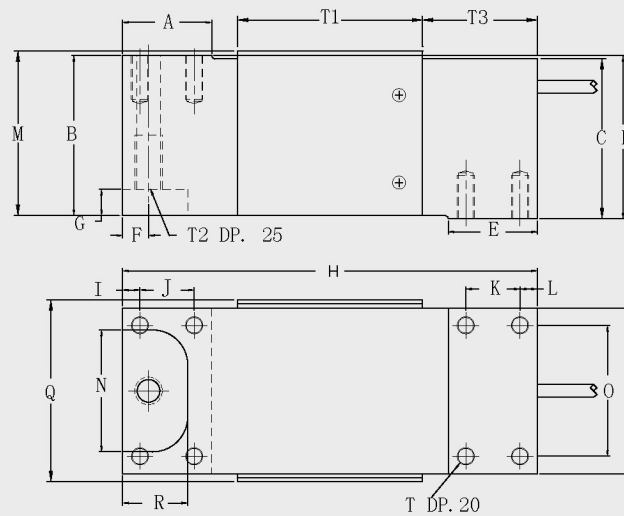
## Features 特点

- Single Point Load Cell
- Senior Aluminum
- Easy to Install, Stable & Reliable
- Fit for Floor scales, Tank weighing, Bin and hopper scales, etc.

- 单点式传感器
- 铝合金材质
- 安装简便、快速, 稳定可靠
- 适用于地磅、罐装秤和料斗等

## Capacities 量程

150kg, 200kg, 250kg, 300kg, 500kg,  
635kg, 1000kg



## Dimensions 尺寸

Capacity/ 量程		A	B	C	D	E	F	G	H	I	J	K	L
150kg - 1000kg	mm	41.0	73.5	73.5	75.0	41.0	12.0	12.0	191.0	8.0	25.0	25.0	8.0
		M	N	O	P	Q	R	T1	T		T2		T3
	mm	74.8	56.0	60.0	76.2	82.0	30.0	84.6	8x5/16 -18UNC		1/2-20UNC		52.5

## Specification 技术参数

Rated Output/额定输出	2.0mV/V $\pm$ 5%
Zero Balance/零点平衡	$\pm$ 3% of rated output
Creep after 30 minutes/蠕变	$\pm$ 0.03% of rated output
Nonlinearity/非线性	$\pm$ 0.03% of rated output
Hysteresis/滞后	$\pm$ 0.03% of rated output
Repeatability/重复性	$\pm$ 0.03% of rated output
Temp. effect on output/灵敏度温漂	$\leq$ 0.002% of applied output/ $^{\circ}$ C
Temp. effect on zero/零点温漂	$\leq$ 0.002% of rated output/ $^{\circ}$ C
Safe Temp. Range/可用温度范围	-10 $^{\circ}$ C to + 30 $^{\circ}$ C
Temp. Compensated/温度补偿范围	-10 $^{\circ}$ C to + 50 $^{\circ}$ C
Safe Overload/安全载荷	150%
Input Impedance/输入阻抗	410 ohm $\pm$ 5 ohm
Output Impedance/输出阻抗	350 ohm $\pm$ 3 ohm
Insulation Resistance/绝缘阻抗	$\geq$ 5000 M ohm (50V DC)
Rated Excitation/推荐激励电压	10V DC/AC
Maximum Excitation/最大激励电压	15V DC/AC
Cable Length/导线长度	6m
Cable Color Code/导线颜色	Red(+E) Black(-E) Green(+S) White(-S)

## Schematic 接线方式

Red: + input  
 Black: - input  
 Green: + output  
 White: - output

红色: + 激励  
 黑色: - 激励  
 绿色: + 信号  
 白色: - 信号

