

850nm VCSEL TO-CAN

YPT-8502

Features

- 850nm wavelength VCSEL
- TO-46 Package
- Without glass window
- Cost effective



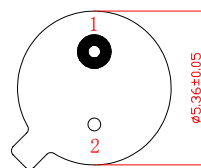
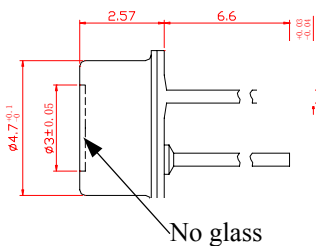
Absolute Maximum Ratings:

| Parameter | Symbol | Min. | Typ. | Max. | Unit | Note |
|-----------------------|----------------|------|------|------|------|------|
| Optical Power | P _o | 1.5 | | | mW | CW |
| Storage Temperature | | -40 | | 85 | °C | |
| Operating Temperature | | 0 | | 70 | °C | |
| Operating Current | | | | 15 | mA | |
| Reverse Voltage | V _R | 5 | | | V | |

Optical / Electrical Characteristics (T=25°C):

| Parameter | Symbol | Min. | Typ. | Max. | Unit | Note |
|----------------------|--------------------------------|------|------|------|-------|----------------------|
| Optical Output Power | P _o | 1.0 | | | mW | I _F =10mA |
| Forward Voltage | V _F | | | 3.0 | V | I _F =10mA |
| Threshold Current | I _{th} | | 4 | 6 | mA | |
| Operating Current | I _{op} | 2 | | 11 | mA | P _o =1mW |
| Operating Voltage | V _{op} | | | 2.5 | V | P _o =1mW |
| Center Wavelength | λ _c | 835 | 850 | 870 | nm | |
| Beam Divergence | θ _{FWHM} | | 8 | | deg | I _F =10mA |
| Slope Efficiency | η | 0.1 | | | mW/mA | 0.5~1.5mW |
| Series Resistance | R _s | | | 150 | Ω | |
| Rise/Fall time | T _R /T _F | | | 500 | ps | |

Outline dimensions & pin assignment:



PIN OUT:
1. LD+
2. LD-

BIN:

I_{op} @1mW (mA)

- A. 2.0 ~ < 3.0
- B. 3.0 ~ < 4.0
- C. 4.0 ~ < 5.0
- D. 5.0 ~ < 6.0
- E. 6.0 ~ < 7.0
- F. 7.0 ~ < 8.0
- G. 8.0 ~ < 9.0
- H. 9.0 ~ < 10.0
- I. 10.0 ~ 11.0



岳豐科技股份有限公司

YFC-BoneEagle electric CO. LTD

<http://www.cables.com.tw>

Tel:886-3-4778846

Fax:886-3-4971692

3/4/2005

Version : A