



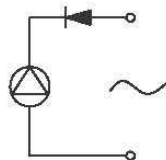
DSZ-01 solenoids pump



总重量 Total Weight: 80g
应用范围: 用于蒸汽熨斗和清洁机等
APPLICATION: Mainly Applied in Steam Iron And Cleaner etc

综合特性 GENERAL FEATURES

电气连接 (交流) 通过一个二极管 ($\geq 1A$)
此连接必须按照图示
ELECTRICAL CONNECTION (AC) through a diode ($\geq 1A$), the connection has to be made as shown on diagram
(直流) 需要使用一个方波脉冲转换器
(DC) requires the use of a square waves impulse converter



空载时间 ≤ 3 分钟
NONLOADED TIME ≤ 3 minute

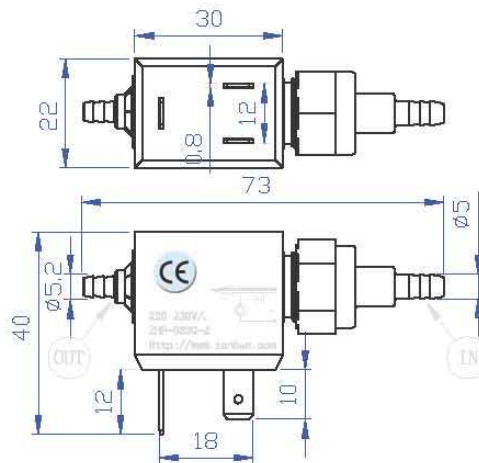
寿命 连续工作800小时
WORKLIFE above 800 work hours

活塞和弹簧 高耐腐蚀不生锈
PISTON AND SPRING stainless steel high corrosion resistance

流体 水和无腐蚀性介质
FLUIDS water and non corrosive media

抽吸距离 泵体与液面高度差按 50 ± 10 cm, 进水侧胶管长为 80 ± 10 cm, 抽吸出水时间 ≤ 20 Sec
SUCTION PREVALENCE Height (Pump)-Height (Liquid level) $= 50 \pm 10$ cm, the length of inlet host is 80 ± 10 cm, the time of pump water ≤ 20 Sec

类型: 水泵 TYPE: Water Pump



单位:mm Units:mm

COIL SPECIFICATION (at 20° C)

Coil Sensitivity	Duty Cycle (%)	Nominal voltage (VAC)	Nominal current (A)	Coil Resistance ($\Omega \pm 10\%$)	Power Consumption (W)	Max "ON" time (Sec)	Max Pressure (Bar)	Max Flow Rate (cc/min)
DSZ-01	100	24	1.6	15	12	∞	1.2	230
DSZ-01A	100	220	0.2	1100	14	∞	1.2	230
DSZ-01B	100	220	0.2	1100	14	∞	3.2	160
DSZ-01C	100	220	0.21	1100	14	∞	2.4	180

CHARACTERISTICS (Typical data at 20° C)

