



精密激光
Precision Laser



高清晰镜头
High Definition Lens



激光焊接机身
Body Of Laser Solder



高精度线性模组
Linearity Module Of High Precision



标准模块
Standard Model

LTT-3000S 特点 / FEATURES

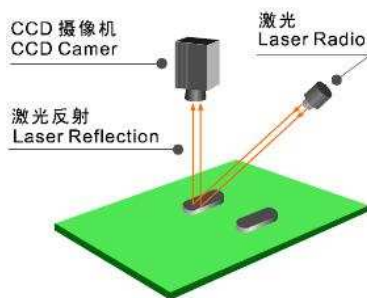
- 300mm×300mm 大测量区，充分满足基板要求；
- 快速，可视操作更简便，真正可编程测试系统；
- 通过 PCB MARK 自动寻找检查位置并矫正偏移；
- 一次按键，多目标测量；
- 自动补偿修正基板翘曲变形，获取准确锡膏高度；
- 强大 SPC 数据统计分析软件；
- 可预警，可自动生成 CP、CPK、X-BAR、R-CHART、SIGMA 柱形图、R&C&S&P 分布图、直方图、趋势图、管制图等；
- 扫描影像可进行截面切片测量与分析，彩色影像同样可用于 2D；
- 精密可靠的硬件系统，提供可信测试精度与可靠使用寿命；
- 超越锡膏厚度测试的多功能测试；
- 测量结果数据列表自动保存，生成 SPC 报表方便查看；

- 300mmx300mm Full area to meet using request;
- Programmed test system and operation with quick and view ;
- Auto-search and inspect also rectify offset base on PCB MARK;
- Inspection multi goal by one key;
- Autocompensation and correct warp as well as distotion so that get reliable solder paste;
- Strong SPC analyse software for data statistic;
- Warning and building CP、CPK、X-BAR、R-CHART、SIGMA histogram R&C&S&P distributing chart、straight chart、trend chart、control chart automatically;
- Inspection for section slip and analyse after scanning image ,as well as 2D;
- Exact and reliable hard system provide creditable data and long life;
- Muti-fuction test for over solder paste;
- Auto-save the test data and build SPC report so that review in future;

其它用途 / OTHERS

- IC 封装、空 PCB 变形测量；
- 钢网的通孔尺寸和形状测量；
- PCB 焊盘、丝印图案的厚度和形状测量；
- 提供刮刀压力预测功能、印刷制程优化功能；
- 芯片邦定、零件共平面度、BGA/CSP 尺寸和形装测量；
- Encapsulation IC and measure for blank distion PCB;
- Measure steel mesh for through hole and shape;
- Measure thickness for solder tray and silk-screen patten;
- Provide forecast for pressure、optimize printing processing;
- Encapsulation chip、same planeness for accessorys、
- Measure dimension and shape for BGA / CSP;

工作原理图 / WORK PRINCIPLE

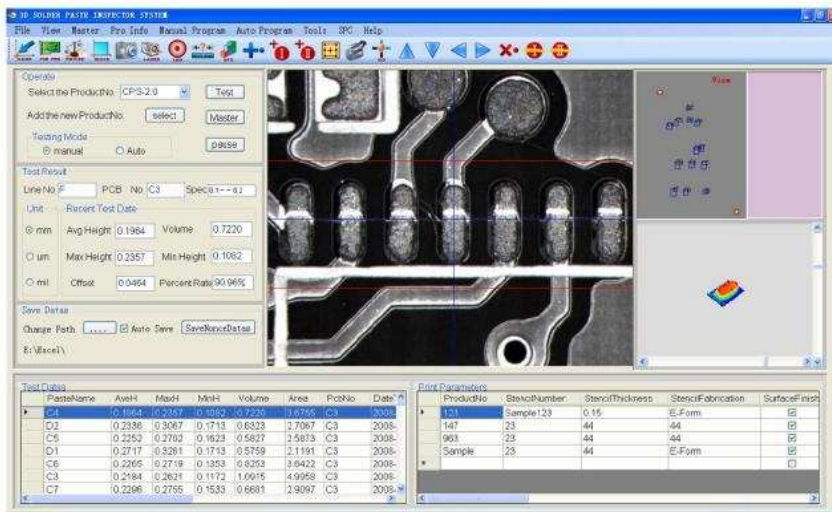


(原理说明：激光头发射激光经过被测物体表面，物体表面不同高度被反射到镜头，经过图像处理转化为数据。)

(Principle Show:Reflection laser to su:face of object by laser head. then reflect to lensby surface of different heigh, transform into data by image processing.)



软件界面 / SOFT SURFACE



CPK 测试报告 CPK Test Report



R.X_Bar Chart



柱形图 Histogram

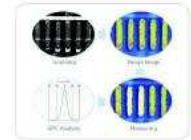
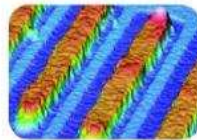
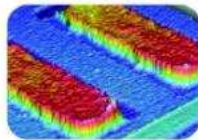
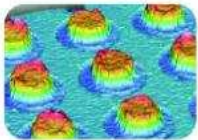


打印报告 Printing Report



SPC 设置 SPC Config

测试效果 / TEST EFFECTION



技术参数 / PARAMETERS

最高测量精度	Tiptop measure precision(Z)	Height (Z) :0.5μm
重复精度	Repeat precision	Height :below 1.2μm , Volume :below 1%
放大倍率	Zoom multiple	50X
光学检测系统	Optics inspection system	黑白 200 万像素 CCD 2 Million pixel w with black and white CCD
激光发生系统	Laser system	红光激光模组 Laser module with glowing
自动平台系统	Auto-system	全自动 Full automaticity
测量原理	Measure principle	非接触式激光束 Non-touch laser bean
X/Y 可移动扫描范围	Scan area (X/Y)	300mm(X) × 300mm(Y)
最大可测量高度	Max measure height	5mm
测量速度	Measure speed	最大 60 Profiles / min Max 60 Profiles / min
SPC 软件	SPC soft	Cp、Cpk、Sigma、Histogram Chat、 X bar R&S、Trend、Scatter、 Pdata report to Excel & Text
计算机系统	PC system	DELL PC ,17" TFT LCD, Windows XP
软件语言版本	Language	简体中文、繁体中文、英文 Simplified Chinese ,Traditional Chinese, English
电源	Power	单相 AC 220V, 60/50Hz Single-phase AC 220V, 60/50Hz
重量	Weight	75kg
设备外型尺寸	Product shape size	668(W) x 775(D) x 374(H) mm
包装后尺寸	Packing size	790(W)×880(D)×630(H) mm



销售热线: 13570844686
Http:www.zgill.cn

服务热线: 13570844816
E-mail:sz-jialianli@163.com

