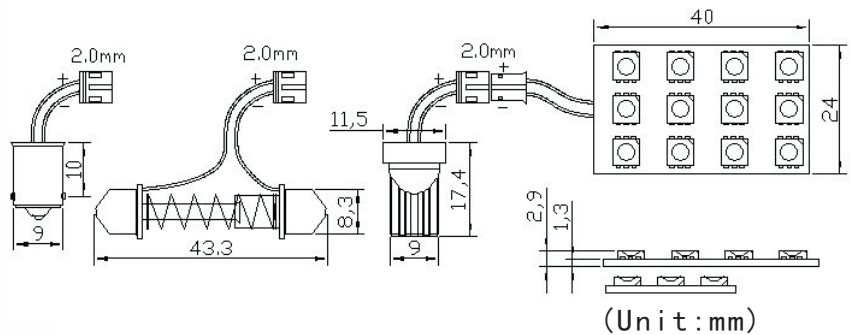


PRODUCT TYPE

FOR-PB0120W-4024-12



DESCRIPTION

LED car top bulb 5050*12PCS L40mm W24mm 12V White

A Electronics And Optical Characteristics: Ta=25°C

Emitting Color	Forward Voltage Unit:v	Totality Luminous flux Unit:LM	Single LED Intensity Unit:mcd	Dominant Wavelength Unit:nm	Viewing Angle Unit:deg	Color Temperature Unit:K
NW	12	120	4000-4500	---	120	4000-5000
WW	12	120	4000-4500	---	120	2700-3500
CW	12	120	4000-4500	---	120	6500-7000
Test Condition	Test Voltage: 12V		Current: 120mA±10%		Power: 1.44W	
IR max: 10 μA/per chip			VR= 3.3V/per chip			

B Absolute Maximum Ratings AT Ta=25°C

PARAMETER	MAX	UNIT
Continuous Forward Current	20	mA/per chip
Peak Forward Current (1/10 Duty Cycle 0.1ms Pulse Width)	100	mA/per chip
Reverse Voltage	5	V/per chip
Operating Temperature Range	-30°C to +75°C	
Storage Temperature/Humidity Range	-40°C to +100°C (/40%to70%)	

Lead Solder Temperature 1.6mmBelow Package 260°C For 5 seconds

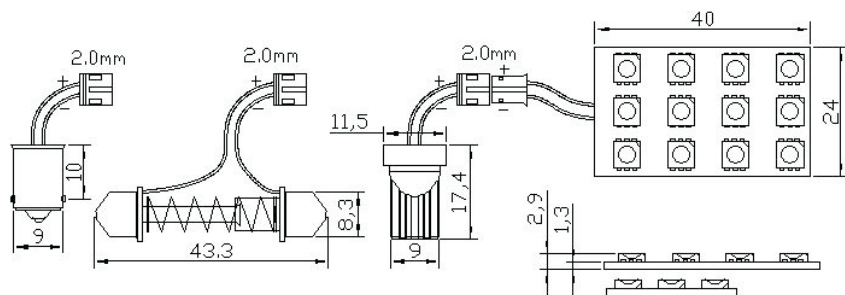
Usage: led doom bulb, led reading bulb, led car top bulb,...

Advantage:easy installation, PCB dimension and the quantity SMD can be designed as need, 3M tape on the back to stick anywhere you want, T10 wedge, Festoon, BA9S bayonet lamp base for choose to match different cars.

PACKAGE

FOR-PB0120W-4024-12

Package Dimensions (Unit:mm) :



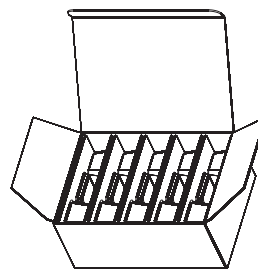
- Packaging: 61 #Blister Card(1 pcs)
- Net weight: 9. 8g
- Gross weight: 18. 7g
- Box size: 210*150*92mm
- Carton size: 440*320*310mm
- Packaging Quantity: 120pcs

1PCS/Blister



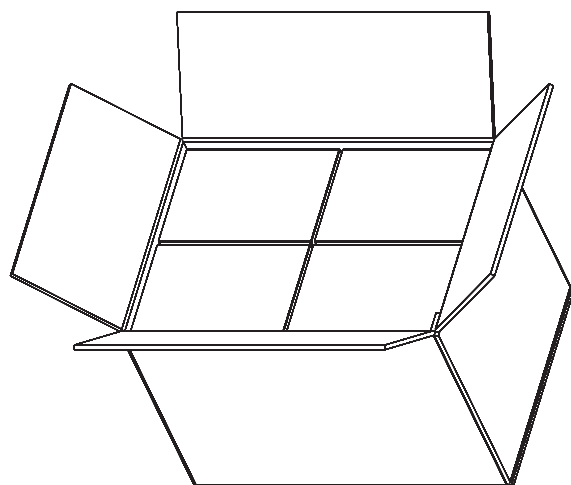
Blister

10Blister/ box



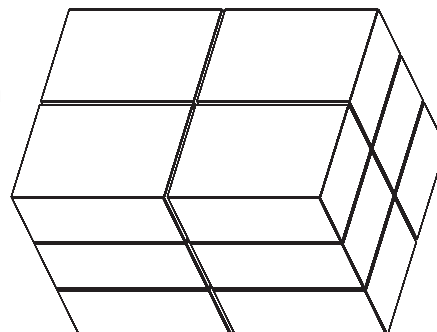
box size(L210*W150*H92MM)

12 boxes



Carton(L440*W320*H310MM)

12 boxes/carton



CONTACT US