

**Quantitative Analysis Report**

\* We report the parts, materials and ingredients consisting of this component as follows.

\* Please refer to the attached document No. listed below for the analysis data of PBB and PBDE content in plastics and the RoHS 4 materials

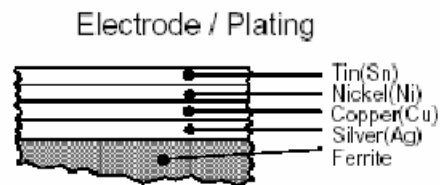
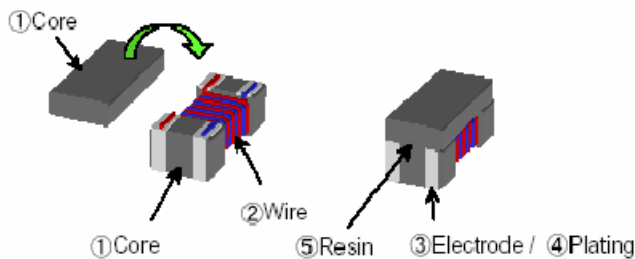
Item : ACM2012-\*\*\*-2P-T002

No.	Portion	Material name	Measurements (ppm)								Analysis data No.
			Data item	Cd	Pb	Hg	Cr 6+	T-Cr	PBB	PBDE	
1	Core	Ferrite	Data	<2	<5	<5	<1	-	-	-	Attachment 1
			Method	ICP	ICP	ICP	UV-VIS	-	-	-	
2	Wire	Cu	Data	<2	<2	<2	-	<2	-	-	Attachment 2
		Heat-resistant PUR	Data	<2	<2	<2	<2	-	<5	<5	
		Method	ICP	ICP	ICP	UV-VIS	ICP	GC/MS	GC/MS		
3	Electrode	Ag paste	Data	<2	<2	<2	<2	-	-	-	Attachment 3
			Method	ICP	ICP	ICP	UV-VIS	-	-	-	
4	Plating	Cu	Data	<2	<2	<2	<2	-	-	-	Attachment 4
		Ni	Data	<2	46	<2	<2	-	-	-	
		Sn	Data	<2	10	<2	<2	-	-	-	
		Method	ICP	ICP	ICP	UV-VIS	-	-	-		
5	Resin	Epoxy	Data	<2	<2	<2	<2	-	<5	<5	Attachment 5
			Method	ICP	ICP	ICP	UV-VIS	-	GC/MS	GC/MS	

\* The display of "<xx" of measurements indicates less than fixed quantity lower bound value.

\* We have not changed the materials used in this product since the acquisition of the analysis data. Therefore, we guarantee the information in this report to be up to date.

**【Product structure】**



株式会社産業分析センター

THE INDUSTRIAL ANALYSIS SERVICE LTD.

TEL:+81-48-924-7151 FAX:+81-48-928-3587 e-mail [ias@sangyobunseki.co.jp](mailto:ias@sangyobunseki.co.jp)

405 Yatsuka Souka Saitama Japan 340-0023

## TEST REPORT

Report No. 11221302

Date of issue : 17 May 2011

To ; ██████████

Material / Manufacturer name are confidential

Date of receipt of sample : 9 May 2011

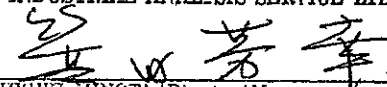
Sampling classification : Reception

Name of sample : CERAMIC NZ ██████████

The following is the report on the requested test of the sample.

Object of test	Unit	Test result	Test method
Cd	ppm	Less than 2.0	IEC62321(2008) ICP-OES
Pb	ppm	Less than 5.0	IEC62321(2008) ICP-OES
Cr(VI)	ppm	Less than 1.0	IEC62321(2008) ANNEX B UV-VIS
Hg	ppm	Less than 5.0	IEC62321(2008) ICP-OES

THE INDUSTRIAL ANALYSIS SERVICE LTD.

  
 YOSHIYUKI MINOTA / Director / Manager

Report No. 11221302

measurement days: 9 May 2011 ~ 17 May 2011

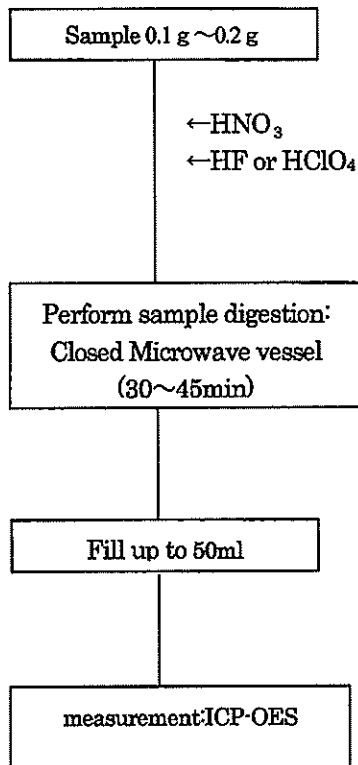
operator: Yumi Suzuki

minimum: Cd 2.0ppm Pb 5.0ppm

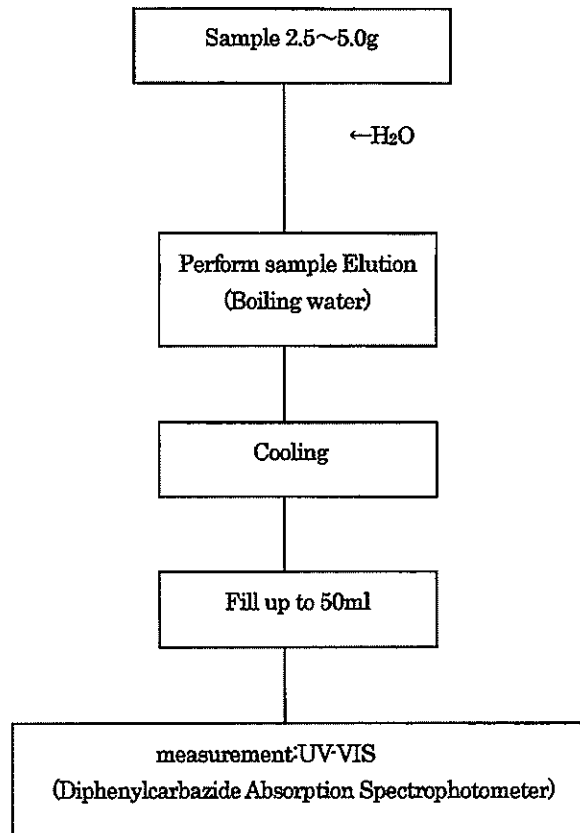
Cr(VI) 1.0ppm Hg 5.0ppm

note: The sample was completely digested

IEC62321(2008): Cd , Pb, Hg



IEC62321(2008) ANNEX B: Cr(VI)



ICP-OES : Rigaku CIROS CCD

UV-VIS : HITACHI High-Technologies U-2010

# Test Report

No. : CE/2011/37281 Date : 2011/04/29 Page : 1 of 5



Material / Manufacturer name are confidential

The following sample(s) was/were submitted and identified by/on behalf of the client as:

Sample Description : CU 銅  
 Sample Receiving Date : 2011/03/29  
 Testing Period : 2011/03/29 TO 2011/04/07

Test Result(s) : Please refer to next page(s).

Unless otherwise stated the results shown in this test report refer only to the sample(s) tested. This test report cannot be reproduced, except in full, without prior written permission of the Company. 除非另有說明，此報告結果僅對測試的樣品負責。本報告未經本公司書面許可，不可部份複製。

This document is issued by the Company subject to its General Conditions of Service printed overleaf, available on request or accessible at [www.sgs.com/terms\\_and\\_conditions.htm](http://www.sgs.com/terms_and_conditions.htm) and, for electronic format documents, subject to Terms and Conditions for Electronic Documents at [www.sgs.com/terms\\_e-document.htm](http://www.sgs.com/terms_e-document.htm). Attention is drawn to the limitation of liability, indemnification and jurisdiction issues defined therein. Any holder of this document is advised that information contained hereon reflects the Company's findings at the time of its intervention only and within the limits of Client's instructions, if any. The Company's sole responsibility is to its Client and this document does not exonerate parties to a transaction from exercising all their rights and obligations under the transaction documents. This document cannot be reproduced except in full, without prior written approval of the Company. Any unauthorized alteration, forgery or falsification of the content or appearance of this document is unlawful and offenders may be prosecuted to the fullest extent of the law.

SGS Taiwan Ltd  
 台灣檢驗科技股份有限公司 | Chemical-Taipei 33 WuChuan Road, Wuku Industrial Zone, New Taipei City, Taiwan / 新北市五股工業區五權路33號 +886 (0)2269 3279 1+886 (0)2269 3237 [www.sgs.com](http://www.sgs.com)

# Test Report

No. : CE/2011/37281 Date : 2011/04/29 Page : 2 of 5



Material / Manufacturer name are confidential

## Test Result(s)

PART NAME No.1 : COPPER COLORED METAL WIRE

Test Item (s):	Unit	Method	MDL	Result
				No.1
Cadmium (Cd)	mg/kg	With reference to IEC 62321: 2008 and performed by ICP-AES.	2	n.d.
Lead (Pb)	mg/kg	With reference to IEC 62321: 2008 and performed by ICP-AES.	2	n.d.
Mercury (Hg)	mg/kg	With reference to IEC 62321: 2008 and performed by ICP-AES.	2	n.d.
Chromium (Cr)	mg/kg	With reference to US EPA Method 3050B for Chromium Content. Analysis was performed by ICP-AES.	2	n.d.

### Note :

1. mg/kg = ppm : 0.1wt% = 1000ppm
2. n.d. = Not Detected
3. MDL = Method Detection Limit
4. Testing Equipment / Model:

Test Item	Facilities	Instrument maker	Instrument model
Cr	ICP-AES	Varian	Vista Pro
Cd	ICP-AES	Varian	Vista Pro
Pb	ICP-AES	Varian	Vista Pro
Hg	ICP-AES	Varian	Vista Pro

5. This report supersedes the previous document bearing the test report number CE/2011/37281 which was issued on 2011/04/07.

Unless otherwise stated the results shown in this test report refer only to the sample(s) tested. This test report cannot be reproduced, except in full, without prior written permission of the Company. 除非另有說明，此報告結果僅對測試的樣品負責。本報告未經本公司書面許可，不可部分複製。  
 This document is issued by the Company subject to its General Conditions of Service printed overleaf, available on request or accessible at [www.sgs.com/terms\\_and\\_conditions.htm](http://www.sgs.com/terms_and_conditions.htm) and, for electronic format documents, subject to Terms and Conditions for Electronic Documents at [www.sgs.com/terms\\_e-document.htm](http://www.sgs.com/terms_e-document.htm). Attention is drawn to the limitation of liability, indemnification and jurisdiction issues defined therein. Any holder of this document is advised that information contained hereon reflects the Company's findings at the time of its intervention only and within the limits of Client's instructions, if any. The Company's sole responsibility is to its Client and this document does not exonerate parties to a transaction from exercising all their rights and obligations under the transaction documents. This document cannot be reproduced except in full, without prior written approval of the Company. Any unauthorized alteration, forgery or falsification of the content or appearance of this document is unlawful and offenders may be prosecuted to the fullest extent of the law.

SGS Taiwan Ltd  
 台灣檢驗科技股份有限公司 | Chemical-Taipei | 33 WuChyuan Road, Wuku Industrial Zone, New Taipei City, Taiwan / 新北市五股工業區五權路33號 | 886 (02)2299 3279 F+ 886 (02)2299 3237 www.sgs.com

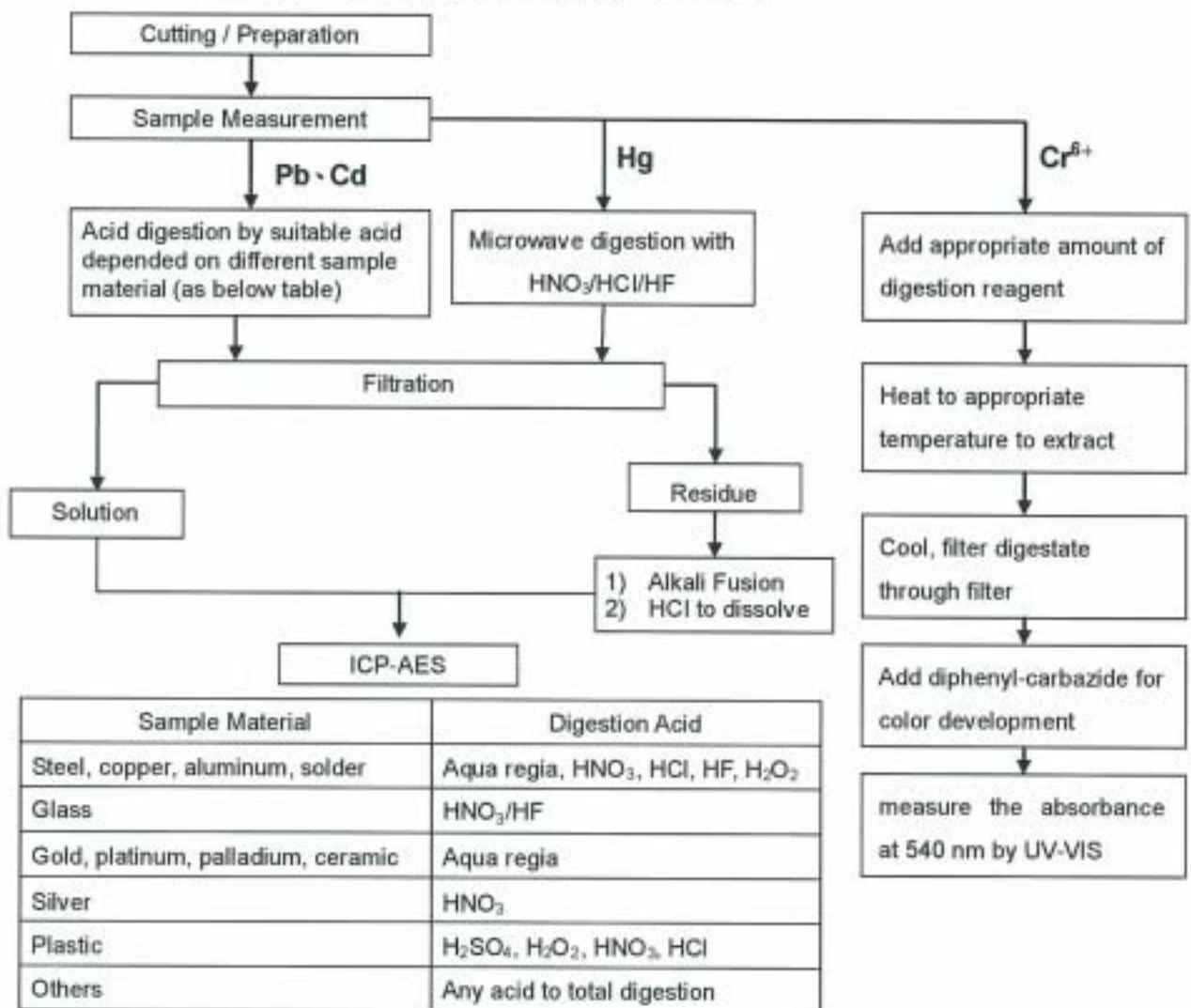
## Test Report

No. : CE/2011/37281 Date : 2011/04/29 Page : 3 of 5



Material / Manufacturer name are confidential

- 1) These samples were dissolved totally by pre-conditioning method according to below flow chart. (Cr<sup>6+</sup> test method excluded)
- 2) Name of the person who made measurement: Climbgreat Yang
- 3) Name of the person in charge of measurement: Troy Chang



Unless otherwise stated the results shown in this test report refer only to the sample(s) tested. This test report cannot be reproduced, except in full, without prior written permission of the Company. 除非另有說明，此報告結果僅針對所測的樣品負責。本報告未經本公司書面許可，不可部分複製。 This document is issued by the Company subject to its General Conditions of Service printed overleaf, available on request or accessible at [www.sgs.com/terms\\_and\\_conditions.htm](http://www.sgs.com/terms_and_conditions.htm) and for electronic format documents, subject to Terms and Conditions for Electronic Documents at [www.sgs.com/terms\\_e-document.htm](http://www.sgs.com/terms_e-document.htm). Attention is drawn to the limitation of liability, indemnification and jurisdiction issues defined therein. Any holder of this document is advised that information contained hereon reflects the Company's findings at the time of its intervention only and within the limits of Client's instructions, if any. The Company's sole responsibility is to its Client and this document does not exonerate parties to a transaction from exercising all their rights and obligations under the transaction documents. This document cannot be reproduced except in full, without prior written approval of the Company. Any unauthorized alteration, forgery or falsification of the content or appearance of this document is unlawful and offenders may be prosecuted to the fullest extent of the law.



## Test Report

No. : CE/2011/37281 Date : 2011/04/29 Page : 4 of 5

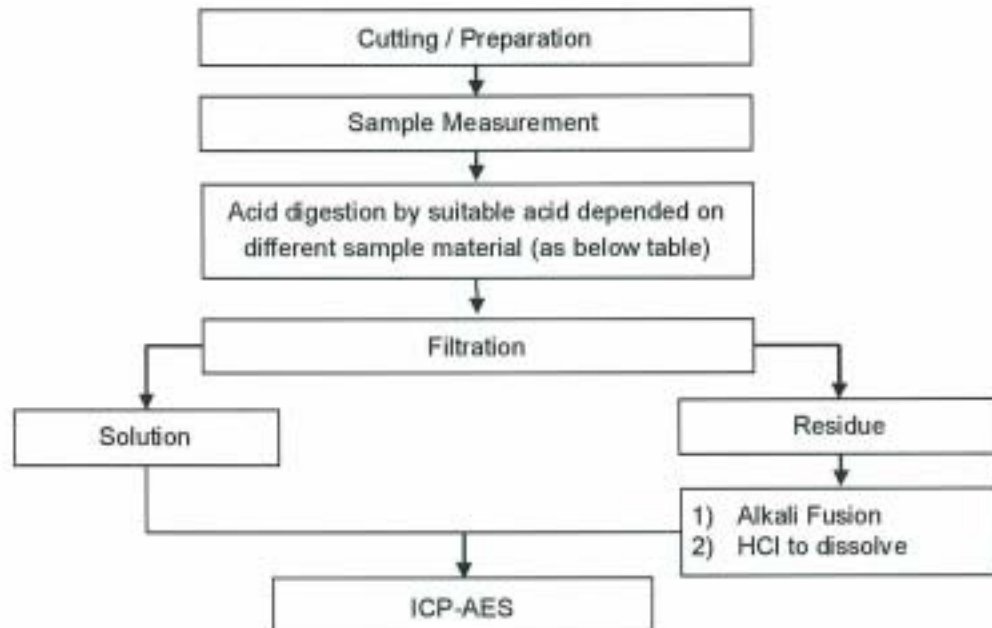


Material / Manufacturer name are confidential

### 【 For Chromium】

- 1) These samples were dissolved totally by pre-conditioning method according to below flow chart.
- 2) Name of the person who made measurement: Climbgreat Yang
- 3) Name of the person in charge of measurement: Troy Chang

### Flow Chart of digestion for the elements analysis performed by ICP-AES



Steel, copper, aluminum, solder	Aqua regia, HNO <sub>3</sub> , HCl, HF, H <sub>2</sub> O <sub>2</sub>
Glass	HNO <sub>3</sub> /HF
Gold, platinum, palladium, ceramic	Aqua regia
Silver	HNO <sub>3</sub>
Plastic	H <sub>2</sub> SO <sub>4</sub> , H <sub>2</sub> O <sub>2</sub> , HNO <sub>3</sub> , HCl
Others	Any acid to total digestion

Unless otherwise stated the results shown in this test report refer only to the sample(s) tested. This test report cannot be reproduced, except in full, without prior written permission of the Company. 除非另有說明，此報告結果僅針對測試的樣品負責。本報告未經本公司書面許可，不可部份複製。

This document is issued by the Company subject to its General Conditions of Service printed overleaf, available on request or accessible at [www.sgs.com/terms\\_and\\_conditions.htm](http://www.sgs.com/terms_and_conditions.htm) and, for electronic format documents, subject to Terms and Conditions for Electronic Documents at [www.sgs.com/terms\\_e-document.htm](http://www.sgs.com/terms_e-document.htm). Attention is drawn to the limitation of liability, indemnification and jurisdiction issues defined therein. Any holder of this document is advised that information contained hereon reflects the Company's findings at the time of its intervention only and within the limits of Client's instructions, if any. The Company's sole responsibility is to its Client and this document does not exonerate parties to a transaction from exercising all their rights and obligations under the transaction documents. This document cannot be reproduced except in full, without prior written approval of the Company. Any unauthorized alteration, forgery or falsification of the content or appearance of this document is unlawful and offenders may be prosecuted to the fullest extent of the law.

## Test Report

No. : CE/2011/37281 Date : 2011/04/29 Page : 5 of 5



Material / Manufacturer name are confidential

### CE/2011/37281



**\*\* End of Report \*\***

Unless otherwise stated the results shown in this test report refer only to the sample(s) tested. This test report cannot be reproduced, except in full, without prior written permission of the Company. 除非另有說明，此報告結果僅對測試的樣品負責。本報告未經本公司書面許可，不得部份複製。

This document is issued by the Company subject to its General Conditions of Service printed overleaf, available on request or accessible at [www.sgs.com/terms\\_and\\_conditions.htm](http://www.sgs.com/terms_and_conditions.htm) and, for electronic format documents, subject to Terms and Conditions for Electronic Documents at [www.sgs.com/terms\\_e-document.htm](http://www.sgs.com/terms_e-document.htm). Attention is drawn to the limitation of liability, indemnification and jurisdiction issues defined therein. Any holder of this document is advised that information contained hereon reflects the Company's findings at the time of its intervention only and within the limits of Client's instructions, if any. The Company's sole responsibility is to its Client and this document does not exonerate parties to a transaction from exercising all their rights and obligations under the transaction documents. This document cannot be reproduced except in full, without prior written approval of the Company. Any unauthorized alteration, forgery or falsification of the content or appearance of this document is unlawful and offenders may be prosecuted to the fullest extent of the law.



## Test Report

No. : CE/2011/37470 Date : 2011/04/08 Page : 1 of 7



Material / Manufacturer name are confidential

The following sample(s) was/were submitted and identified by/on behalf of the client as:

Sample Description : HG  
Sample Receiving Date : 2011/03/29  
Testing Period : 2011/03/29 TO 2011/04/07

Test Result(s) : Please refer to next page(s).

  
  
Chenyu Kung / Operation Manager  
Signed for and on behalf of  
SGS TAIWAN LTD.  
Chemical Laboratory – Taipei

Unless otherwise stated the results shown in this test report refer only to the sample(s) tested. This test report cannot be reproduced, except in full, without prior written permission of the Company. 除非另有說明，此報告結果僅針對測試之樣品負責。本報告未經本公司書面許可，不得部份複製。

This document is issued by the Company subject to its General Conditions of Service printed overleaf, available on request or accessible at [www.sgs.com/terms\\_and\\_conditions.htm](http://www.sgs.com/terms_and_conditions.htm) and, for electronic format documents, subject to Terms and Conditions for Electronic Documents at [www.sgs.com/terms\\_e-document.htm](http://www.sgs.com/terms_e-document.htm). Attention is drawn to the limitation of liability, indemnification and jurisdiction issues defined therein. Any holder of this document is advised that information contained hereon reflects the Company's findings at the time of its intervention only and within the limits of Client's instructions, if any. The Company's sole responsibility is to its Client and this document does not exonerate parties to a transaction from exercising all their rights and obligations under the transaction documents. This document cannot be reproduced except in full, without prior written approval of the Company. Any unauthorized alteration, forgery or falsification of the content or appearance of this document is unlawful and offenders may be prosecuted to the fullest extent of the law.

SGS Taiwan Ltd  
台灣檢驗科技股份有限公司 | Chemical-Taipei 33 WuChyuan Road, Wuks Industrial Zone, New Taipei City, Taiwan / 新北市五股工業區五權路三號 | 886 (02) 2299 3279 F + 886 (02) 2299 3237 [www.sgs.com](http://www.sgs.com)

# Test Report

No. : CE/2011/37470 Date : 2011/04/08 Page : 2 of 7



Material / Manufacturer name are confidential

## Test Result(s)

PART NAME No.1 : DK. BROWN LUMP

Test Item (s):	Unit	Method	MDL	Result
				No.1
Cadmium (Cd)	mg/kg	With reference to IEC 62321: 2008 and performed by ICP-AES.	2	n.d.
Lead (Pb)	mg/kg	With reference to IEC 62321: 2008 and performed by ICP-AES.	2	n.d.
Mercury (Hg)	mg/kg	With reference to IEC 62321: 2008 and performed by ICP-AES.	2	n.d.
Hexavalent Chromium Cr(VI) by alkaline extraction	mg/kg	With reference to IEC 62321: 2008 and performed by UV-VIS.	2	n.d.
Halogen-Chlorine (Cl) (CAS No.: 22537-15-1)	mg/kg	With reference to BS EN 14582:2007. Analysis was performed by IC.	50	n.d.
Halogen-Bromine (Br) (CAS No.: 10097-32-2)	mg/kg	With reference to BS EN 14582:2007. Analysis was performed by IC.	50	n.d.
<b>Sum of PBBs</b>			-	n.d.
Monobromobiphenyl	mg/kg	With reference to IEC 62321: 2008 and performed by GC/MS.	5	n.d.
Dibromobiphenyl			5	n.d.
Tribromobiphenyl			5	n.d.
Tetrabromobiphenyl			5	n.d.
Pentabromobiphenyl			5	n.d.
Hexabromobiphenyl			5	n.d.
Heptabromobiphenyl			5	n.d.
Octabromobiphenyl			5	n.d.
Nonabromobiphenyl			5	n.d.
Decabromobiphenyl			5	n.d.

Unless otherwise stated the results shown in this test report refer only to the sample(s) tested. This test report cannot be reproduced, except in full, without prior written permission of the Company. 除非另有說明，此報告結果僅針對測試的樣品負責。本報告未經本公司書面許可，不可部份複製。

This document is issued by the Company subject to its General Conditions of Service printed overleaf, available on request or accessible at [www.sgs.com/terms\\_and\\_conditions.htm](http://www.sgs.com/terms_and_conditions.htm) and, for electronic format documents, subject to Terms and Conditions for Electronic Documents at [www.sgs.com/terms\\_e-document.htm](http://www.sgs.com/terms_e-document.htm). Attention is drawn to the limitation of liability, indemnification and jurisdiction issues defined therein. Any holder of this document is advised that information contained herein reflects the Company's findings at the time of its intervention only and within the limits of Client's instructions, if any. The Company's sole responsibility is to its Client and this document does not exonerate parties to a transaction from exercising all their rights and obligations under the transaction documents. This document cannot be reproduced except in full, without prior written approval of the Company. Any unauthorized alteration, forgery or falsification of the content or appearance of this document is unlawful and offenders may be prosecuted to the fullest extent of the law.

SGS Taiwan Ltd.  
台灣檢驗科技股份有限公司 | Chemical-Taipei: 33 WuChuan Road, Wuku Industrial Zone, New Taipei City, Taiwan / 新北市五股工業區五權路33號 +886 (02)2299 3270 F +886 (02)2299 3237 [www.sgs.com](http://www.sgs.com)

# Test Report

No. : CE/2011/37470 Date : 2011/04/08 Page : 3 of 7



Material / Manufacturer name are confidential

Test Item (s):	Unit	Method	MDL	Result
				No.1
Sum of PBDEs	mg/kg	With reference to IEC 62321: 2008 and performed by GC/MS.	-	n.d.
Monobromodiphenyl ether			5	n.d.
Dibromodiphenyl ether			5	n.d.
Tribromodiphenyl ether			5	n.d.
Tetrabromodiphenyl ether			5	n.d.
Pentabromodiphenyl ether			5	n.d.
Hexabromodiphenyl ether			5	n.d.
Heptabromodiphenyl ether			5	n.d.
Octabromodiphenyl ether			5	n.d.
Nonabromodiphenyl ether			5	n.d.
Decabromodiphenyl ether			5	n.d.

**Note :**

1. mg/kg = ppm : 0.1wt% = 1000ppm
2. n.d. = Not Detected
3. MDL = Method Detection Limit
4. " - " = Not Regulated
5. Testing Equipment / Model:

Test Item	Facilities	Instrument maker	Instrument model
Cr(VI)	UV-VIS	Varian	Cary 50
Cd	ICP-AES	Varian	Vista Pro
Pb	ICP-AES	Varian	Vista Pro
Hg	ICP-AES	Varian	Vista Pro
PBBs	GC/MS	Agilent	6890/5975
PBDEs	GC/MS	Agilent	6890/5975
Halogen	IC	DIONEX	ICS-1500

6. This report supersedes the previous document bearing the test report number CE/2011/37470 which was issued on 2011/04/07.

Unless otherwise stated the results shown in this test report refer only to the sample(s) tested. This test report cannot be reproduced, except in full, without prior written permission of the Company. 除非另有說明，此報告結果僅針對送檢的樣品負責。本報告未經本公司書面許可，不可部分複製。

This document is issued by the Company subject to its General Conditions of Service printed overleaf, available on request or accessible at [www.sgs.com/terms\\_and\\_conditions.htm](http://www.sgs.com/terms_and_conditions.htm) and for electronic format documents, subject to Terms and Conditions for Electronic Documents at [www.sgs.com/terms\\_e-document.htm](http://www.sgs.com/terms_e-document.htm). Attention is drawn to the limitation of liability, indemnification and jurisdiction issues defined therein. Any holder of this document is advised that information contained hereon reflects the Company's findings at the time of its intervention only and within the limits of Client's instructions, if any. The Company's sole responsibility is to its Client and this document does not exonerate parties to a transaction from exercising all their rights and obligations under the transaction documents. This document cannot be reproduced except in full, without prior written approval of the Company. Any unauthorized alteration, forgery or falsification of the content or appearance of this document is unlawful and offenders may be prosecuted to the fullest extent of the law.



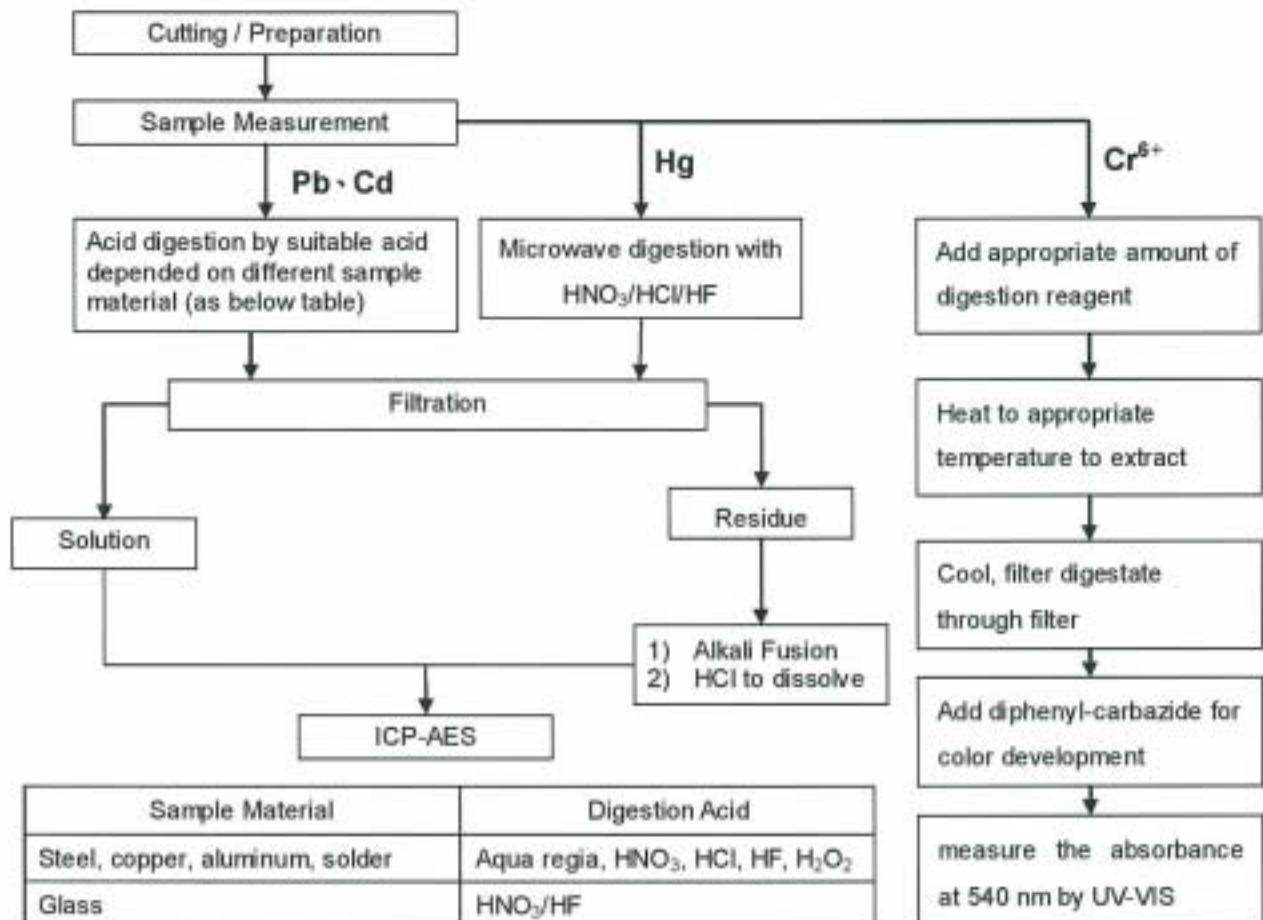
# Test Report

No. : CE/2011/37470 Date : 2011/04/08 Page : 4 of 7



Material / Manufacturer name are confidential

- 1) These samples were dissolved totally by pre-conditioning method according to below flow chart.  
(Cr<sup>6+</sup> test method excluded)
- 2) Name of the person who made measurement: Climbgreat Yang
- 3) Name of the person in charge of measurement: Troy Chang



Sample Material	Digestion Acid
Steel, copper, aluminum, solder	Aqua regia, HNO <sub>3</sub> , HCl, HF, H <sub>2</sub> O <sub>2</sub>
Glass	HNO <sub>3</sub> /HF
Gold, platinum, palladium, ceramic	Aqua regia
Silver	HNO <sub>3</sub>
Plastic	H <sub>2</sub> SO <sub>4</sub> , H <sub>2</sub> O <sub>2</sub> , HNO <sub>3</sub> , HCl
Others	Any acid to total digestion

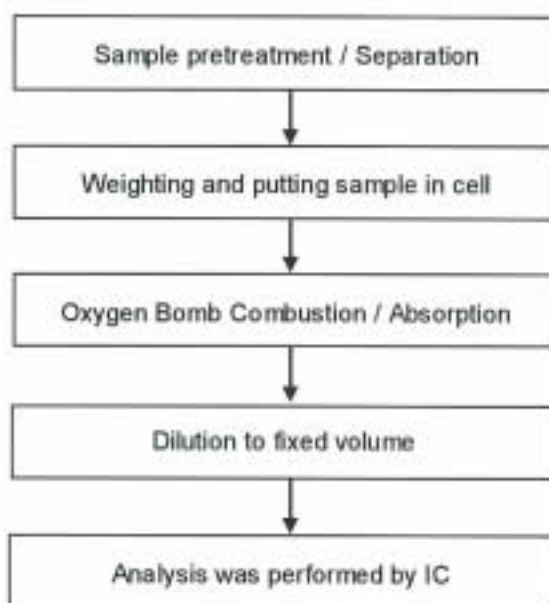
Unless otherwise stated the results shown in this test report refer only to the sample(s) tested. This test report cannot be reproduced, except in full, without prior written permission of the Company. 除非另有說明，此報告結果僅對測試的樣品負責。本報告未經本公司書面許可，不得部分複製。  
This document is issued by the Company subject to its General Conditions of Service printed overleaf, available on request or accessible at [www.sgs.com/terms\\_and\\_conditions.htm](http://www.sgs.com/terms_and_conditions.htm) and, for electronic format documents, subject to Terms and Conditions for Electronic Documents at [www.sgs.com/terms\\_e-document.htm](http://www.sgs.com/terms_e-document.htm). Attention is drawn to the limitation of liability, indemnification and jurisdiction issues defined therein. Any holder of this document is advised that information contained hereon reflects the Company's findings at the time of its intervention only and within the limits of Client's instructions, if any. The Company's sole responsibility is to its Client and this document does not exonerate parties to a transaction from exercising all their rights and obligations under the transaction documents. This document cannot be reproduced except in full, without prior written approval of the Company. Any unauthorized alteration, forgery or falsification of the content or appearance of this document is unlawful and offenders may be prosecuted to the fullest extent of the law.



Material / Manufacturer name are confidential

### Analytical flow chart of halogen content

- 1) Name of the person who made measurement: Rita Chen
- 2) Name of the person in charge of measurement: Troy Chang



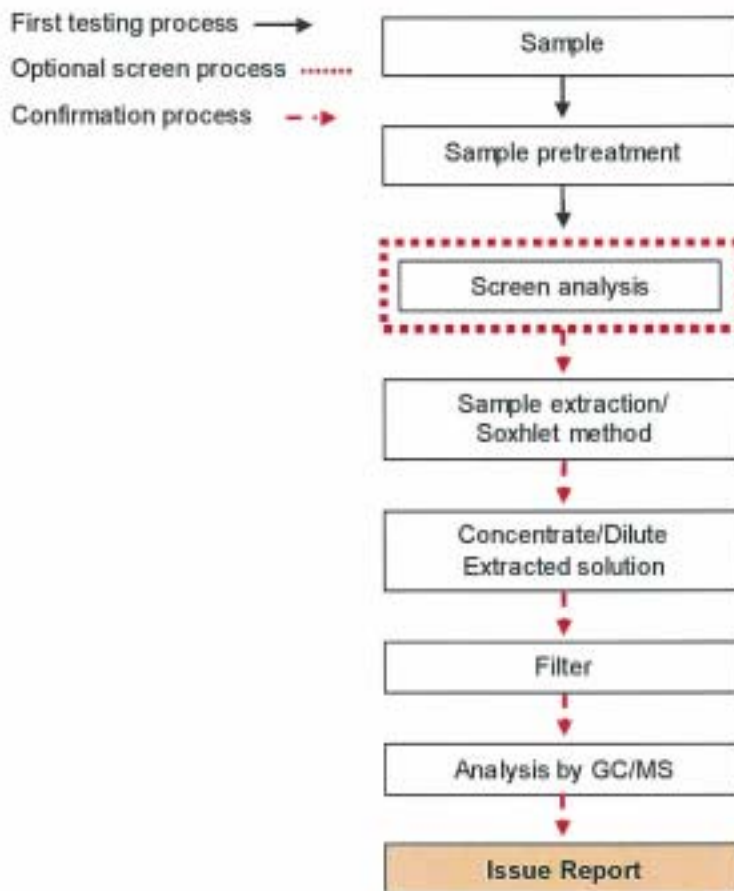
Unless otherwise stated the results shown in this test report refer only to the sample(s) tested. This test report cannot be reproduced, except in full, without prior written permission of the Company. 除非另有說明，此報告結果僅針對送檢的樣品負責。本報告未經本公司書面許可，不可進行複製。  
 This document is issued by the Company subject to its General Conditions of Service printed overleaf, available on request or accessible at [www.sgs.com/terms\\_and\\_conditions.htm](http://www.sgs.com/terms_and_conditions.htm) and, for electronic format documents, subject to Terms and Conditions for Electronic Documents at [www.sgs.com/terms\\_e-document.htm](http://www.sgs.com/terms_e-document.htm). Attention is drawn to the limitation of liability, indemnification and jurisdiction issues defined therein. Any holder of this document is advised that information contained hereon reflects the Company's findings at the time of its intervention only and within the limits of Client's instructions, if any. The Company's sole responsibility is to its Client and this document does not exonerate parties to a transaction from exercising all their rights and obligations under the transaction documents. This document cannot be reproduced except in full, without prior written approval of the Company. Any unauthorized alteration, forgery or falsification of the content or appearance of this document is unlawful and offenders may be prosecuted to the fullest extent of the law.



Material / Manufacturer name are confidential

### PBB/PBDE analytical FLOW CHART

- 1) Name of the person who made measurement: Roman Wong
- 2) Name of the person in charge of measurement: Troy Chang



Unless otherwise stated the results shown in this test report refer only to the sample(s) tested. This test report cannot be reproduced, except in full, without prior written permission of the Company. 除非另有說明，此報告僅適用於所測定的樣品性質。本報告未經本公司書面許可，不可部分複製。  
 This document is issued by the Company subject to its General Conditions of Service printed overleaf, available on request or accessible at [www.sgs.com/terms\\_and\\_conditions.htm](http://www.sgs.com/terms_and_conditions.htm) and, for electronic format documents, subject to Terms and Conditions for Electronic Documents at [www.sgs.com/terms\\_e-document.htm](http://www.sgs.com/terms_e-document.htm). Attention is drawn to the limitation of liability, indemnification and jurisdiction issues defined therein. Any holder of this document is advised that information contained herein reflects the Company's findings at the time of its intervention only and within the limits of Client's instructions, if any. The Company's sole responsibility is to its Client and this document does not exonerate parties to a transaction from exercising all their rights and obligations under the transaction documents. This document cannot be reproduced except in full, without prior written approval of the Company. Any unauthorized alteration, forgery or falsification of the content or appearance of this document is unlawful and offenders may be prosecuted to the fullest extent of the law.



## Test Report

No. : CE/2011/37470 Date : 2011/04/08 Page : 7 of 7



Material / Manufacturer name are confidential

### CE/2011/37470



\*\* End of Report \*\*

Unless otherwise stated the results shown in this test report refer only to the sample(s) tested. This test report cannot be reproduced, except in full, without prior written permission of the Company. 除非另有說明，此報告結果僅對測試的樣品負責。本報告未經本公司書面許可，不可部分複製。

This document is issued by the Company subject to its General Conditions of Service printed overleaf, available on request or accessible at [www.sgs.com/terms\\_and\\_conditions.htm](http://www.sgs.com/terms_and_conditions.htm) and, for electronic format documents, subject to Terms and Conditions for Electronic Documents at [www.sgs.com/terms\\_e-document.htm](http://www.sgs.com/terms_e-document.htm). Attention is drawn to the limitation of liability, indemnification and jurisdiction issues defined therein. Any holder of this document is advised that information contained hereon reflects the Company's findings at the time of its intervention only and within the limits of Client's instructions, if any. The Company's sole responsibility is to its Client and this document does not exonerate parties to a transaction from exercising all their rights and obligations under the transaction documents. This document cannot be reproduced except in full, without prior written approval of the Company. Any unauthorized alteration, forgery or falsification of the content or appearance of this document is unlawful and offenders may be prosecuted to the fullest extent of the law.

SGS Taiwan Ltd.  
台灣檢驗科技股份有限公司

Chemical-Taipei: 33 WuChuan Road, Wuku Industrial Zone, New Taipei City, Taiwan (新北市五股區五權路33號) +886 (0)22299 3278 F+886 (0)22299 3297 [www.sgs.com](http://www.sgs.com)

# Test Report

No. : CE/2010/C0022

Date : 2010/12/07

Page : 1 of 5



Material / Manufacturer name are confidential

The following sample(s) was/were submitted and identified by/on behalf of the client as :

Sample Description : DP  
 Sample Receiving Date : 2010/12/1  
 Testing Period : 2010/12/1 TO 2010/12/07

Test Requested : In accordance with the RoHS Directive 2002/95/EC, and its amendment directives.

Test Method : With reference to IEC 62321: 2008  
 Procedures for the Determination of Levels of Regulated Substances in  
 Electrotechnical Products.

- (1) Determination of Cadmium by ICP-AES.
- (2) Determination of Lead by ICP-AES.
- (3) Determination of Mercury by ICP-AES.
- (4) Determination of Hexavalent Chromium by UV/Vis Spectrometry.
- (5) Determination of PBB and PBDE by GC/MS.

Test Result(s) : Please refer to next page(s).




Chenyu Kung / Operation Manager  
 Signed for and on behalf of  
 SGS TAIWAN LTD.  
 Chemical Laboratory – Taipei

Unless otherwise stated the results shown in this test report refer only to the sample(s) tested. This test report cannot be reproduced, except in full, without prior written permission of the Company. 除非另有說明，此報告結果僅對測試的樣品負責。本報告未經本公司書面許可，不可部份複製。

This document is issued by the Company subject to its General Conditions of Service printed overleaf, available on request or accessible at [www.sgs.com/terms\\_and\\_conditions.htm](http://www.sgs.com/terms_and_conditions.htm) and, for electronic format documents, subject to Terms and Conditions for Electronic Documents at [www.sgs.com/terms\\_e-document.htm](http://www.sgs.com/terms_e-document.htm). Attention is drawn to the limitation of liability, indemnification and jurisdiction issues defined therein. Any holder of this document is advised that information contained hereon reflects the Company's findings at the time of its intervention only and within the limits of Client's instructions, if any. The Company's sole responsibility is to its Client and this document does not exonerate parties to a transaction from exercising all their rights and obligations under the transaction documents. This document cannot be reproduced except in full, without prior written approval of the Company. Any unauthorized alteration, forgery or falsification of the content or appearance of this document is unlawful and offenders may be prosecuted to the fullest extent of the law.

# Test Report

No. : CE/2010/C0022

Date : 2010/12/07

Page : 2 of 5



Material / Manufacturer name are confidential

Test results by chemical method (Unit: mg/kg)

Test Item (s):	Method (Refer to)	Result	MDL
		No.1	
Cadmium (Cd)	(1)	n.d.	2
Lead (Pb)	(2)	n.d.	2
Mercury (Hg)	(3)	n.d.	2
Hexavalent Chromium Cr(VI) by alkaline extraction	(4)	n.d.	2
<b>Sum of PBBs</b>	(5)	n.d.	-
Monobromobiphenyl		n.d.	5
Dibromobiphenyl		n.d.	5
Tribromobiphenyl		n.d.	5
Tetrabromobiphenyl		n.d.	5
Pentabromobiphenyl		n.d.	5
Hexabromobiphenyl		n.d.	5
Heptabromobiphenyl		n.d.	5
Octabromobiphenyl		n.d.	5
Nonabromobiphenyl		n.d.	5
Decabromobiphenyl		n.d.	5
<b>Sum of PBDEs</b>		n.d.	-
Monobromodiphenyl ether		n.d.	5
Dibromodiphenyl ether		n.d.	5
Tribromodiphenyl ether		n.d.	5
Tetrabromodiphenyl ether		n.d.	5
Pentabromodiphenyl ether		n.d.	5
Hexabromodiphenyl ether		n.d.	5
Heptabromodiphenyl ether		n.d.	5
Octabromodiphenyl ether		n.d.	5
Nonabromodiphenyl ether	n.d.	5	
Decabromodiphenyl ether	n.d.	5	

## TEST PART DESCRIPTION:

No.1 : DARK GRAY PASTE

### Note :

1. mg/kg = ppm; 0.1wt% = 1000ppm
2. n.d. = Not Detected
3. MDL = Method Detection Limit
4. "-" = Not Regulated

Unless otherwise stated the results shown in this test report refer only to the sample(s) tested. This test report cannot be reproduced, except in full, without prior written permission of the Company. 除非另有說明，此報告結果僅針對測試的樣品負責。本報告未經本公司書面許可，不可部份複製。

This document is issued by the Company subject to its General Conditions of Service printed overleaf, available on request or accessible at [www.sgs.com/terms\\_and\\_conditions.htm](http://www.sgs.com/terms_and_conditions.htm) and, for electronic format documents, subject to Terms and Conditions for Electronic Documents at [www.sgs.com/terms\\_e-document.htm](http://www.sgs.com/terms_e-document.htm). Attention is drawn to the limitation of liability, indemnification and jurisdiction issues defined therein. Any holder of this document is advised that information contained herein reflects the Company's findings at the time of its intervention only and within the limits of Client's instructions, if any. The Company's sole responsibility is to its Client and this document does not exonerate parties to a transaction from exercising all their rights and obligations under the transaction documents. This document cannot be reproduced except in full, without prior written approval of the Company. Any unauthorized alteration, forgery or falsification of the content or appearance of this document is unlawful and offenders may be prosecuted to the fullest extent of the law.



# Test Report

No. : CE/2010/C0022

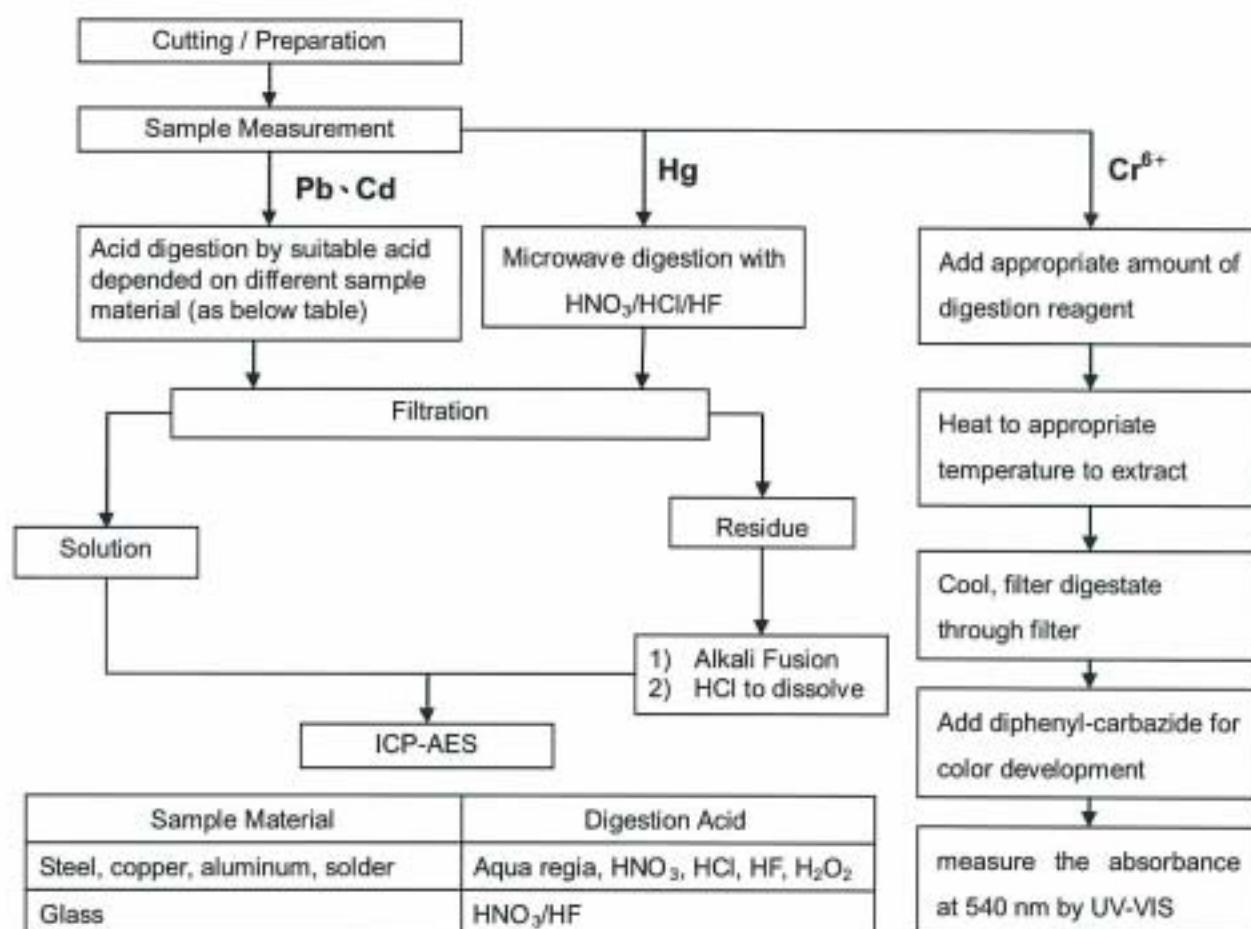
Date : 2010/12/07

Page : 3 of 5



Material / Manufacturer name are confidential

- 1) These samples were dissolved totally by pre-conditioning method according to below flow chart. (Cr<sup>6+</sup> test method excluded)
- 2) Name of the person who made measurement: Climbgreat Yang
- 3) Name of the person in charge of measurement: Troy Chang



Sample Material	Digestion Acid
Steel, copper, aluminum, solder	Aqua regia, HNO <sub>3</sub> , HCl, HF, H <sub>2</sub> O <sub>2</sub>
Glass	HNO <sub>3</sub> /HF
Gold, platinum, palladium, ceramic	Aqua regia
Silver	HNO <sub>3</sub>
Plastic	H <sub>2</sub> SO <sub>4</sub> , H <sub>2</sub> O <sub>2</sub> , HNO <sub>3</sub> , HCl
Others	Any acid to total digestion

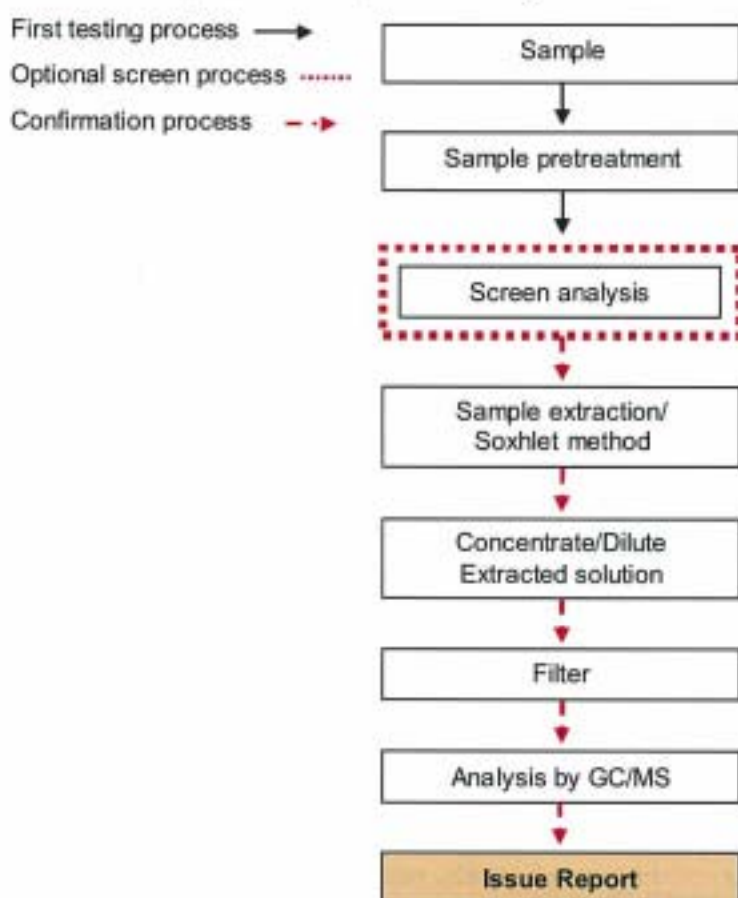
Unless otherwise stated the results shown in this test report refer only to the sample(s) tested. This test report cannot be reproduced, except in full, without prior written permission of the Company. 除非另有說明，此報告結果僅針對測試的樣品負責。未經本公司書面許可，不可部份複製。  
 This document is issued by the Company subject to its General Conditions of Service printed overleaf, available on request or accessible at [www.sgs.com/terms\\_and\\_conditions.htm](http://www.sgs.com/terms_and_conditions.htm) and, for electronic format documents, subject to Terms and Conditions for Electronic Documents at [www.sgs.com/terms\\_e-document.htm](http://www.sgs.com/terms_e-document.htm). Attention is drawn to the limitation of liability, indemnification and jurisdiction issues defined therein. Any holder of this document is advised that information contained hereon reflects the Company's findings at the time of its intervention only and within the limits of Client's instructions, if any. The Company's sole responsibility is to its Client and this document does not exonerate parties to a transaction from exercising all their rights and obligations under the transaction documents. This document cannot be reproduced except in full, without prior written approval of the Company. Any unauthorized alteration, forgery or falsification of the content or appearance of this document is unlawful and offenders may be prosecuted to the fullest extent of the law.



Material / Manufacturer name are confidential

### PBB/PBDE analytical FLOW CHART

- 1) Name of the person who made measurement: Roman Wong
- 2) Name of the person in charge of measurement: Troy Chang



Unless otherwise stated the results shown in this test report refer only to the sample(s) tested. This test report cannot be reproduced, except in full, without prior written permission of the Company. 除非另有說明，此報告結果僅對測試的樣品負責。本報告未經本公司書面許可，不得部份複製。

This document is issued by the Company subject to its General Conditions of Service printed overleaf, available on request or accessible at [www.sgs.com/terms\\_and\\_conditions.htm](http://www.sgs.com/terms_and_conditions.htm) and, for electronic format documents, subject to Terms and Conditions for Electronic Documents at [www.sgs.com/terms\\_e-document.htm](http://www.sgs.com/terms_e-document.htm). Attention is drawn to the limitation of liability, indemnification and jurisdiction issues defined therein. Any holder of this document is advised that information contained hereon reflects the Company's findings at the time of its intervention only and within the limits of Client's instructions, if any. The Company's sole responsibility is to its Client and this document does not exonerate parties to a transaction from exercising all their rights and obligations under the transaction documents. This document cannot be reproduced except in full, without prior written approval of the Company. Any unauthorized alteration, forgery or falsification of the content or appearance of this document is unlawful and offenders may be prosecuted to the fullest extent of the law.

## Test Report

No. : CE/2010/C0022

Date : 2010/12/07

Page : 5 of 5



Material / Manufacturer name are confidential



\*\* End of Report \*\*

Unless otherwise stated the results shown in this test report refer only to the sample(s) tested. This test report cannot be reproduced, except in full, without prior written permission of the Company. 除非另有說明，此報告結果僅對送檢的樣品負責。本報告未經本公司書面許可，不可部份複製。

This document is issued by the Company subject to its General Conditions of Service printed overleaf, available on request or accessible at [www.sgs.com/terms\\_and\\_conditions.htm](http://www.sgs.com/terms_and_conditions.htm) and, for electronic format documents, subject to Terms and Conditions for Electronic Documents at [www.sgs.com/terms\\_e-document.htm](http://www.sgs.com/terms_e-document.htm). Attention is drawn to the limitation of liability, indemnification and jurisdiction issues defined therein. Any holder of this document is advised that information contained hereon reflects the Company's findings at the time of its intervention only and within the limits of Client's instructions, if any. The Company's sole responsibility is to its Client and this document does not exonerate parties to a transaction from exercising all their rights and obligations under the transaction documents. This document cannot be reproduced except in full, without prior written approval of the Company. Any unauthorized alteration, forgery or falsification of the content or appearance of this document is unlawful and offenders may be prosecuted to the fullest extent of the law.





## TEST REPORT

REPORT NO. JP/2010/120384 DATE: December 27, 2010 PAGE 1 OF 4

TDK UGO CORPORATION

16-2 TAMACHI IWAKIKAMEDAKAMEDA-MACHI YURIHONJO-SHI AKITA JAPAN

THE FOLLOWING SAMPLE(S) WAS/WERE SUBMITTED AND IDENTIFIED BY/ON BEHALF OF THE CLIENT AS:

以下のサンプルは顧客により提供され、顧客に代わって確認を行いました:

SAMPLE DESCRIPTION : Electro plating/Copper Plate(No.10 Line)

CLIENT REF.NO :

SAMPLE RECEIVED : 2010/12/13

TESTING DATE : 2010/12/14 TO 2010/12/24

TEST REQUESTED : SELECTED TEST(S) AS REQUESTED BY CLIENT.

分析項目 : 分析項目は顧客の要求によります。

TEST METHOD(S) : WITH REFERENCE TO IEC62321 EDITION 1.0 2008-12 FOR RoHS 6 SUBSTANCES.

分析方法

Cd, Pb: SECTION 8, 9, 10

Hg: SECTION 7

Cr(VI): ANNEX B, C

PBB/PBDE: ANNEX A

OTHER CHEMICALS WERE TESTED BY EACH APPROPRIATE METHOD.

RoHS6物質の分析はIEC62321第1.0版(2008年12月)を参照しました。

Cd, Pb: 第8, 9, 10章

Hg: 第7章

Cr(VI): 付属文書B, C

PBB/PBDE: 付属文書A

それ以外の化学物質についてはそれぞれに最適な方法で分析を行いました。

TEST RESULT(S) : PLEASE REFER TO THE NEXT PAGE(S).

分析結果

以下のページをご参照願います。

後藤 邦之

Kuniyuki Goto / Laboratory Manager  
SGS Japan Inc., Green Testing Center

This Test Report is issued by the Company under its General Conditions of Service printed overleaf or available on request and accessible at <http://www.sgs.com>. Attention is drawn to the limitation of liability, indemnification and jurisdiction issues defined therein. Unless otherwise stated the results shown in this Test Report refer only to the sample(s) tested. This Test Report cannot be reproduced except, in full, without prior approval of the Company. Any unauthorized alteration, forgery or falsification of the content or appearance of this test report is unlawful and offenders may be prosecuted to the fullest extent of the law.

この検査報告書は裏面に記載された、もしくは<http://www.sgs.com>で入手可能なサービスに関する一般的条件に則して発行されます。そちらに明記されている弊社の負うべき債務・補償の範囲及び司法管轄の項目をご注意ください。他に特に明記のない限り、この検査報告書に記載された結果は、検査した試料のみに属します。この書面全体の複製以外には、弊社からの事前の許可を得ること無く複製することを禁じます。この検査報告書を無断で変更、偽造、改ざんすることは違法であり、違反者に対しては法的手段を講ずることとなります。

JP 289308

SGS Japan Inc.  
Green Testing CenterYBP East Tower 12F, 134 Godo-cho Hodogaya-ku Yokohama 240-0005, Japan  
t +81(0) 45 330 1100 f +81(0) 45 330 1108 URL: [www.jp.sgs.com/rohs](http://www.jp.sgs.com/rohs)



# TEST REPORT

REPORT NO. JP/2010/120384    DATE: December 27, 2010    PAGE 2 OF 4

TDK UGO CORPORATION

16-2 TAMACHI IWAKIKAMEDAKAMEDA-MACHI YURIHONJO-SHI AKITA JAPAN

## TEST RESULT(S)

ITEM(S)	UNIT	RESULT	METHOD	INST./PLACE	MDL
CADMIUM(Cd)	mg/kg	N.D.	Wet decomposition(HNO <sub>3</sub> )	ICP-OES	2
LEAD(Pb)	mg/kg	N.D.	Wet decomposition(HNO <sub>3</sub> )	ICP-OES	2
MERCURY(Hg)	mg/kg	N.D.	Microwave/HPV/digestion(HNO <sub>3</sub> +HF) /Thermal decomposition	ICP-OES	2
CHROMIUM VI(Cr(VI))	μg/cm <sup>2</sup>	N.D.	Boiling water extraction	UV/VIS	0.01

NOTES: mg/kg = ppm, N.D. = Not Detected, INST. = INSTRUMENT, MDL = Method Detection Limit

REMARK: Cr(VI) has been tested with regard to the surface area of 12cm<sup>2</sup>.

Reference: The MDL of Cr(VI) can be converted into 2 (ppm) with regard to the sample weight.

This Test Report is issued by the Company under its General Conditions of Service printed overleaf or available on request and accessible at <http://www.sgs.com>. Attention is drawn to the limitation of liability, indemnification and jurisdiction issues defined therein. Unless otherwise stated the results shown in this Test Report refer only to the sample(s) tested. This Test Report cannot be reproduced except, in full, without prior approval of the Company. Any unauthorized alteration, forgery or falsification of the content or appearance of this test report is unlawful and offenders may be prosecuted to the fullest extent of the law.

この検査報告書は裏面に記載された、もしくは<http://www.sgs.com>で入手が可能なサービスに関する一般的条件に則して発行されます。そちらに明記されている弊社の負うべき債務・補償の範囲及び司法管轄の項目をご注意ください。他に特に明記のない限り、この検査報告書に記載された結果は、検査した試料のみに属します。この書面全体の複製以外には、弊社からの事前の許可を得ること無く複製することを禁じます。この検査報告書が無断で変更、偽造、改ざんすることは違法であり、違反者に対しては法的手段を講ずることとなります。

JP 289309

SGS Japan Inc.  
Green Testing Center

YBP East Tower 12F, 134 Godo-cho Hodogaya-ku Yokohama 240-0005, Japan  
t +81(0) 45 330 1100 f +81(0) 45 330 1108    URL: [www.jp.sgs.com/rohs](http://www.jp.sgs.com/rohs)

TDK UGO CORPORATION

16-2 TAMACHI IWAKIKAMEDAKAMEDA-MACHI YURIHONJO-SHI AKITA JAPAN

### 分析フローチャート MEASUREMENT FLOW CHART

1)酸分解前処理において試料を完全分解しています。

The sample was dissolved/ decomposed totally by acid pre-conditioning method according to below flow chart.

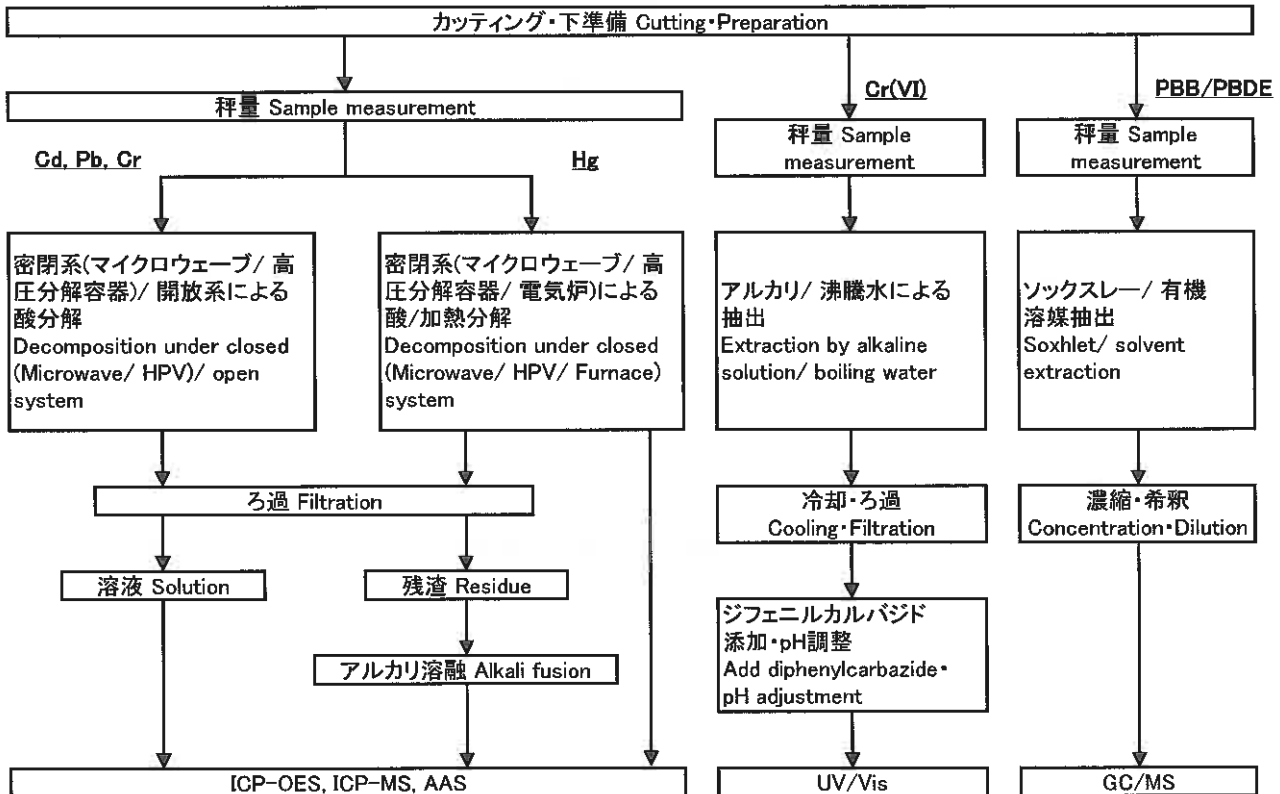
2)Cd, Pb, Hg, Cr, Cr(VI)

分析担当者 Name of the person in charge of measurement: 丸山 文隆 Fumitaka Maruyama

3)PBB/PBDE

分析担当者 Name of the person in charge of measurement: 高橋 英樹 Hideki Takahashi

4)分析責任者 Name of the person responsible for measurement: 大内 幸弘 Yukihiko Ouchi



## TEST REPORT

REPORT NO. JP/2010/120384

DATE: December 27, 2010

PAGE 4 OF 4

TDK UGO CORPORATION

16-2 TAMACHI IWAKIKAMEDAKAMEDA-MACHI YURIHONJO-SHI AKITA JAPAN

## SAMPLE IMAGE



<END>

This Test Report is issued by the Company under its General Conditions of Service printed overleaf or available on request and accessible at <http://www.sgs.com>. Attention is drawn to the limitation of liability, indemnification and jurisdiction issues defined therein. Unless otherwise stated the results shown in this Test Report refer only to the sample(s) tested. This Test Report cannot be reproduced except, in full, without prior approval of the Company. Any unauthorized alteration, forgery or falsification of the content or appearance of this test report is unlawful and offenders may be prosecuted to the fullest extent of the law.

この検査報告書は裏面に記載された、もしくは<http://www.sgs.com>で入手が可能なサービスに関する一般的条件に関して発行されます。そちらに明記されている弊社の負うべき債務・補償の範囲及び司法管轄の項目をご確認ください。他に特に明記のない限り、この検査報告書に記載された結果は、検査した試料のみに属します。この書面全体の複製以外には、弊社からの事前の許可を得ること無く複製することを禁じます。この検査報告書が無断で変更、偽造、改ざんすることは違法であり、違反者に対しては法的手段を講ずることとなります。

JP 289311



## TEST REPORT

REPORT NO. JP/2010/120385 DATE: December 27, 2010 PAGE 1 OF 4

TDK UGO CORPORATION

16-2 TAMACHI IWAKIKAMEDAKAMEDA-MACHI YURIHONJO-SHI AKITA JAPAN

THE FOLLOWING SAMPLE(S) WAS/WERE SUBMITTED AND IDENTIFIED BY/ON BEHALF OF THE CLIENT AS:  
 以下のサンプルは顧客により提供され、顧客に代わって確認を行いました:

SAMPLE DESCRIPTION : Electro plating/Nickel Plate(No.10 Line)

CLIENT REF.NO :

SAMPLE RECEIVED : 2010/12/13

TESTING DATE : 2010/12/14 TO 2010/12/24

TEST REQUESTED : SELECTED TEST(S) AS REQUESTED BY CLIENT.  
 分析項目 分析項目は顧客の要求によります。

TEST METHOD(S) : WITH REFERENCE TO IEC62321 EDITION 1.0 2008-12 FOR RoHS 6 SUBSTANCES.  
 分析方法 Cd, Pb: SECTION 8, 9, 10  
 Hg: SECTION 7  
 Cr(VI): ANNEX B, C  
 PBB/PBDE: ANNEX A  
 OTHER CHEMICALS WERE TESTED BY EACH APPROPRIATE METHOD.  
 RoHS6物質の分析はIEC62321第1.0版(2008年12月)を参照しました。  
 Cd, Pb: 第8, 9, 10章  
 Hg: 第7章  
 Cr(VI): 付属文書B, C  
 PBB/PBDE: 付属文書A  
 それ以外の化学物質についてはそれぞれに最適な方法で分析を行いました。

TEST RESULT(S) : PLEASE REFER TO THE NEXT PAGE(S).  
 分析結果 以下のページをご参照願います。

後藤 邦之

Kuniyuki Goto / Laboratory Manager  
 SGS Japan Inc., Green Testing Center

This Test Report is issued by the Company under its General Conditions of Service printed overleaf or available on request and accessible at <http://www.sgs.com>. Attention is drawn to the limitation of liability, indemnification and jurisdiction issues defined therein. Unless otherwise stated the results shown in this Test Report refer only to the sample(s) tested. This Test Report cannot be reproduced except, in full, without prior approval of the Company. Any unauthorized alteration, forgery or falsification of the content or appearance of this test report is unlawful and offenders may be prosecuted to the fullest extent of the law.

この検査報告書は裏面に記載された、もしくは<http://www.sgs.com>で入手が可能なサービスに関する一般的条件に則して発行されます。そちらに明記されている弊社の負うべき債務・補償の範囲及び司法管轄の項目をご確認ください。他に特に明記のない限り、この検査報告書に記載された結果は、検査した試料のみに属します。この書面全体の複製以外には、弊社からの事前の許可を得ること無く複製することを禁じます。この検査報告書を無断で変更、偽造、改ざんすることは違法であり、違反者に対しては法的手段を講ずることとなります。

JP 289312

**TEST REPORT**

REPORT NO. JP/2010/120385

DATE: December 27, 2010

PAGE 2 OF 4

TDK UGO CORPORATION

16-2 TAMACHI IWAKIKAMEDAKAMEDA-MACHI YURIHONJO-SHI AKITA JAPAN

**TEST RESULT(S)**

ITEM(S)	UNIT	RESULT	METHOD	INST./PLACE	MDL
CADMIUM(Cd)	mg/kg	N.D.	Wet decomposition(HNO <sub>3</sub> )	ICP-OES	2
LEAD(Pb)	mg/kg	46	Wet decomposition(HNO <sub>3</sub> )	ICP-OES	2
MERCURY(Hg)	mg/kg	N.D.	Microwave/HPV/digestion(HNO <sub>3</sub> +HF) /Thermal decomposition	ICP-OES	2
CHROMIUM VI(Cr(VI))	μg/cm <sup>2</sup>	N.D.	Boiling water extraction	UV/VIS	0.01

NOTES: mg/kg = ppm, N.D. = Not Detected, INST. = INSTRUMENT, MDL = Method Detection Limit

REMARK: Cr(VI) has been tested with regard to the surface area of 12cm<sup>2</sup>.

Reference: The MDL of Cr(VI) can be converted into 2 (ppm) with regard to the sample weight.

This Test Report is issued by the Company under its General Conditions of Service printed overleaf or available on request and accessible at <http://www.sgs.com>. Attention is drawn to the limitation of liability, indemnification and jurisdiction issues defined therein. Unless otherwise stated the results shown in this Test Report refer only to the sample(s) tested. This Test Report cannot be reproduced except in full, without prior approval of the Company. Any unauthorized alteration, forgery or falsification of the content or appearance of this test report is unlawful and offenders may be prosecuted to the fullest extent of the law.

この検査報告書は裏面に記載された、もしくは<http://www.sgs.com>で入手が可能なサービスに関する一般的条件に則して発行されます。そちらに明記されている弊社の負うべき債務・補償の範囲及び司法管轄の項目をご確認ください。他に特に明記のない限り、この検査報告書に記載された結果は、検査した試料のみに属します。この書面全体の複製以外には、弊社からの事前の許可を得ること無く複製することを禁じます。この検査報告書が無断で変更、偽造、改ざんすることは違法であり、違反者に対しては法的手段を講ずることとなります。

JP 289313



TDK UGO CORPORATION

16-2 TAMACHI IWAKIKAMEDAKAMEDA-MACHI YURIHONJO-SHI AKITA JAPAN

### 分析フローチャート MEASUREMENT FLOW CHART

1)酸分解前処理において試料を完全分解しています。

The sample was dissolved/ decomposed totally by acid pre-conditioning method according to below flow chart.

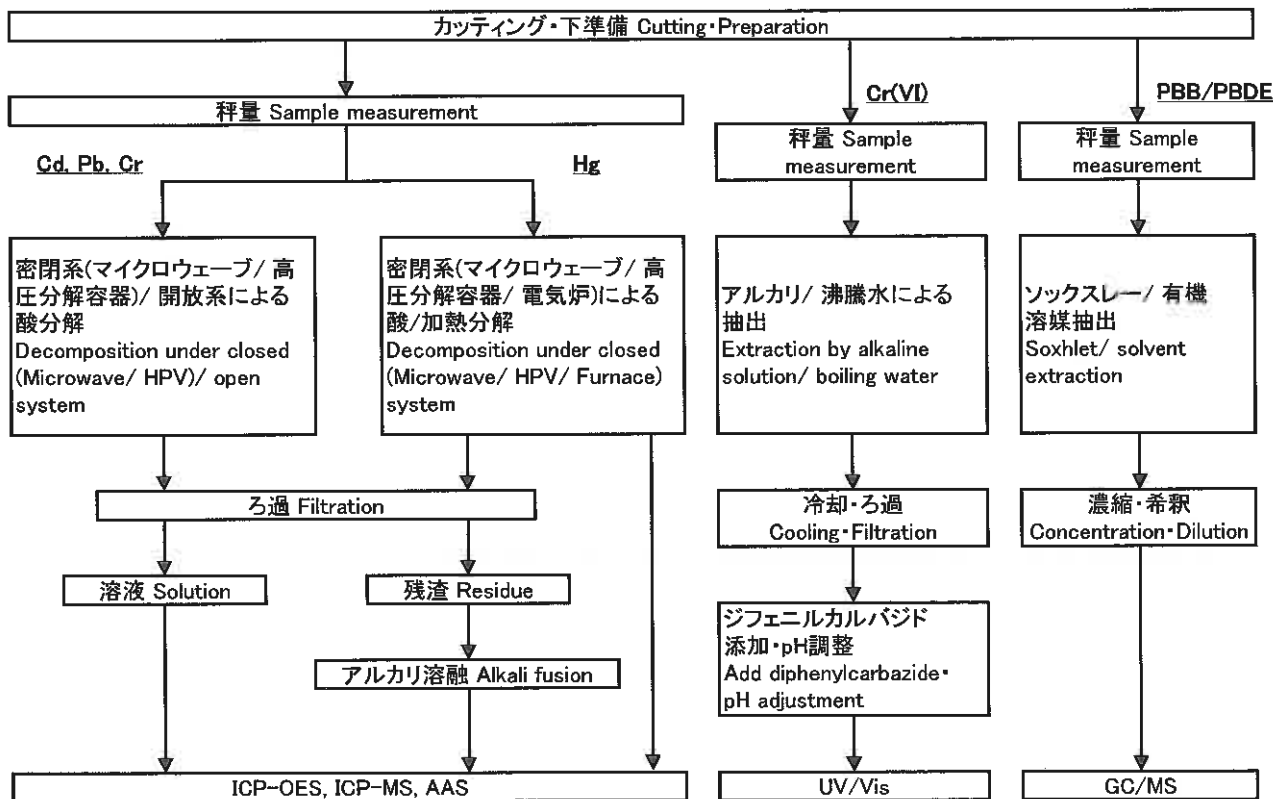
2)Cd, Pb, Hg, Cr, Cr(VI)

分析担当者 Name of the person in charge of measurement: 丸山 文隆 Fumitaka Maruyama

3)PBB/PBDE

分析担当者 Name of the person in charge of measurement: 高橋 英樹 Hideki Takahashi

4)分析責任者 Name of the person responsible for measurement: 大内 幸弘 Yukihiro Ouchi



This Test Report is issued by the Company under its General Conditions of Service printed overleaf or available on request and accessible at <http://www.sgs.com>. Attention is drawn to the limitation of liability, indemnification and jurisdiction issues defined therein. Unless otherwise stated the results shown in this Test Report refer only to the sample(s) tested. This Test Report cannot be reproduced except, in full, without prior approval of the Company. Any unauthorized alteration, forgery or falsification of the content or appearance of this test report is unlawful and offenders may be prosecuted to the fullest extent of the law.

この検査報告書は裏面に記載された、もしくは<http://www.sgs.com>で入手可能なサービスに関する一般的な条件に則して発行されます。そちらに明記されている弊社の負うべき債務・補償の範囲及び司法管轄の項目をご注意ください。他に特に明記のない限り、この検査報告書に記載された結果は、検査した試料のみに属します。この書面全体の複製以外には、弊社からの事前の許可を得ること無く複製することを禁じます。この検査報告書を無断で変更、偽造、改ざんすることは違法であり、違反者に対しては法的手段を講ずることとなります。

JP 289314

## TEST REPORT

REPORT NO. JP/2010/120385

DATE: December 27, 2010

PAGE 4 OF 4

TDK UGO CORPORATION

16-2 TAMACHI IWAKIKAMEDAKAMEDA-MACHI YURIHONJO-SHI AKITA JAPAN

### SAMPLE IMAGE



<END>

This Test Report is issued by the Company under its General Conditions of Service printed overleaf or available on request and accessible at <http://www.sgs.com>. Attention is drawn to the limitation of liability, indemnification and jurisdiction issues defined therein. Unless otherwise stated the results shown in this Test Report refer only to the sample(s) tested. This Test Report cannot be reproduced except, in full, without prior approval of the Company. Any unauthorized alteration, forgery or falsification of the content or appearance of this test report is unlawful and offenders may be prosecuted to the fullest extent of the law.

この検査報告書は裏面に記載された、もしくは<http://www.sgs.com>で入手が可能なサービスに関する一般的条件に則して発行されます。そちらに明記されている弊社の負うべき債務・補償の範囲及び司法管轄の項目をご注意ください。他に特に明記のない限り、この検査報告書に記載された結果は、検査した試料のみに属します。この書面全体の複製以外には、弊社からの事前の許可を得ること無く複製することを禁じます。この検査報告書を無断で変更、偽造、改ざんすることは違法であり、違反者に対しては法的手段を講じることとなります。

JP 289315



## TEST REPORT

REPORT NO. JP/2010/120386 DATE: December 27, 2010 PAGE 1 OF 4

TDK UGO CORPORATION

16-2 TAMACHI IWAKIKAMEDAKAMEDA-MACHI YURIHONJO-SHI AKITA JAPAN

THE FOLLOWING SAMPLE(S) WAS/WERE SUBMITTED AND IDENTIFIED BY/ON BEHALF OF THE CLIENT AS:  
 以下のサンプルは顧客により提供され、顧客に代わって確認を行いました:

SAMPLE DESCRIPTION : Electro plating/Tin Plate(No.10 Line)

CLIENT REF.NO :

SAMPLE RECEIVED : 2010/12/13

TESTING DATE : 2010/12/14 TO 2010/12/24

TEST REQUESTED : SELECTED TEST(S) AS REQUESTED BY CLIENT.  
 分析項目 分析項目は顧客の要求によります。

TEST METHOD(S) : WITH REFERENCE TO IEC62321 EDITION 1.0 2008-12 FOR RoHS 6 SUBSTANCES.  
 分析方法 Cd, Pb: SECTION 8, 9, 10  
 Hg: SECTION 7  
 Cr(VI): ANNEX B, C  
 PBB/PBDE: ANNEX A  
 OTHER CHEMICALS WERE TESTED BY EACH APPROPRIATE METHOD.  
 RoHS6物質の分析はIEC62321第1.0版(2008年12月)を参照しました。  
 Cd, Pb: 第8, 9, 10章  
 Hg: 第7章  
 Cr(VI): 付属文書B, C  
 PBB/PBDE: 付属文書A  
 それ以外の化学物質についてはそれぞれに最適な方法で分析を行いました。

TEST RESULT(S) : PLEASE REFER TO THE NEXT PAGE(S).  
 分析結果 以下のページをご参照願います。

後藤 邦之

Kuniyuki Goto / Laboratory Manager  
 SGS Japan Inc., Green Testing Center

This Test Report is issued by the Company under its General Conditions of Service printed overleaf or available on request and accessible at <http://www.sgs.com>. Attention is drawn to the limitation of liability, indemnification and jurisdiction issues defined therein. Unless otherwise stated the results shown in this Test Report refer only to the sample(s) tested. This Test Report cannot be reproduced except, in full, without prior approval of the Company. Any unauthorized alteration, forgery or falsification of the content or appearance of this test report is unlawful and offenders may be prosecuted to the fullest extent of the law.

この検査報告書は裏面に記載された、もしくは<http://www.sgs.com>で入手が可能なサービスに関する一般的条件に則して発行されます。そちらに明記されている弊社の負うべき債務・補償の範囲及び司法管轄の項目をご注意ください。他に特に明記のない限り、この検査報告書に記載された結果は、検査した試料のみに属します。この書面全体の複製以外には、弊社からの事前の許可を得ること無く複製することを禁じます。この検査報告書が無断で変更、偽造、改ざんすることは違法であり、違反者に対しては法的手段を講ずることとなります。

JP 289316

SGS Japan Inc.  
 Green Testing Center

YBP East Tower 12F, 134 Godo-cho Hodogaya-ku Yokohama 240-0005, Japan  
 t +81(0) 45 330 1100 f +81(0) 45 330 1108 URL: [www.jp.sgs.com/rohs](http://www.jp.sgs.com/rohs)



# TEST REPORT

REPORT NO. JP/2010/120386

DATE: December 27, 2010

PAGE 2 OF 4

TDK UGO CORPORATION

16-2 TAMACHI IWAKIKAMEDAKAMEDA-MAGHI YURIHONJO-SHI AKITA JAPAN

## TEST RESULT(S)

ITEM(S)	UNIT	RESULT	METHOD	INST./PLACE	MDL
CADMIUM(Cd)	mg/kg	N.D.	Wet decomposition(HNO <sub>3</sub> )	ICP-OES	2
LEAD(Pb)	mg/kg	10	Wet decomposition(HNO <sub>3</sub> )	ICP-MS	2
MERCURY(Hg)	mg/kg	N.D.	Microwave/HPV/digestion(HNO <sub>3</sub> +HF) /Thermal decomposition	ICP-OES	2
CHROMIUM VI(Cr(VI))	μg/cm <sup>2</sup>	N.D.	Boiling water extraction	UV/VIS	0.01

NOTES: mg/kg = ppm, N.D. = Not Detected, INST. = INSTRUMENT, MDL = Method Detection Limit

REMARK: Cr(VI) has been tested with regard to the surface area of 12cm<sup>2</sup>.

Reference: The MDL of Cr(VI) can be converted into 2 (ppm) with regard to the sample weight.

This Test Report is issued by the Company under its General Conditions of Service printed overleaf or available on request and accessible at <http://www.sgs.com>. Attention is drawn to the limitation of liability, indemnification and jurisdiction issues defined therein. Unless otherwise stated the results shown in this Test Report refer only to the sample(s) tested. This Test Report cannot be reproduced except, in full, without prior approval of the Company. Any unauthorized alteration, forgery or falsification of the content or appearance of this test report is unlawful and offenders may be prosecuted to the fullest extent of the law.

この検査報告書は裏面に記載された、もしくは<http://www.sgs.com>で入手が可能なサービスに関する一般的条件に則して発行されます。そちらに明記されている弊社の負うべき債務・補償の範囲及び司法管轄の項目をご確認ください。他に特に明記のない限り、この検査報告書に記載された結果は、検査した試料のみに属します。この書面全体の複製以外には、弊社からの事前の許可を得ること無く複製することを禁じます。この検査報告書を無断で変更、偽造、改ざんすることは違法であり、違反者に対しては法的手段を講ずることとなります。

JP 289317

SGS Japan Inc.  
Green Testing CenterYBP East Tower 12F, 134 Godo-cho Hodogaya-ku Yokohama 240-0005, Japan  
t +81(0) 45 330 1100 f +81(0) 45 330 1108 URL: [www.jp.sgs.com/rohs](http://www.jp.sgs.com/rohs)

TDK UGO CORPORATION

16-2 TAMACHI IWAKIKAMEDAKAMEDA-MACHI YURIHONJO-SHI AKITA JAPAN

### 分析フローチャート MEASUREMENT FLOW CHART

1)酸分解前処理において試料を完全分解しています。

The sample was dissolved/ decomposed totally by acid pre-conditioning method according to below flow chart.

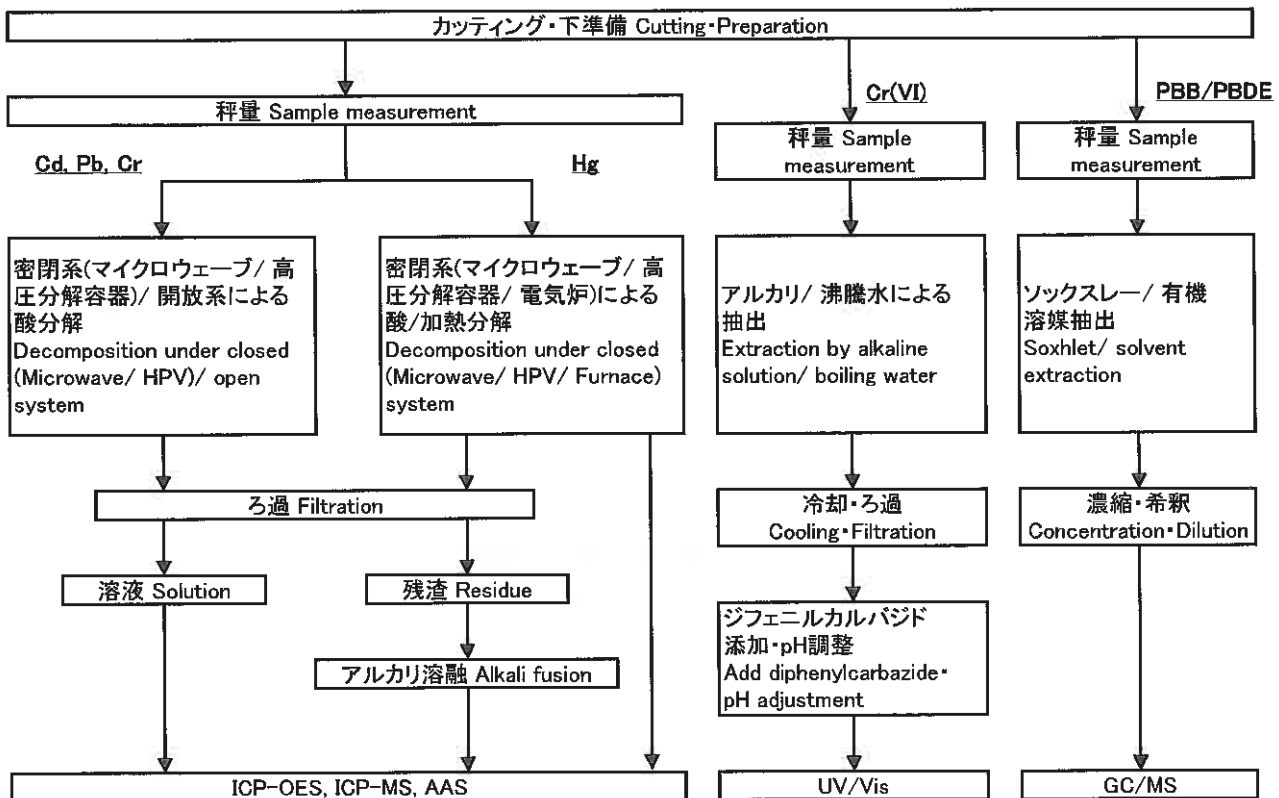
2)Cd, Pb, Hg, Cr, Cr(VI)

分析担当者 Name of the person in charge of measurement: 丸山 文隆 Fumitaka Maruyama

3)PBB/PBDE

分析担当者 Name of the person in charge of measurement: 高橋 英樹 Hideki Takahashi

4)分析責任者 Name of the person responsible for measurement: 大内 幸弘 Yukihiko Ouchi



This Test Report is issued by the Company under its General Conditions of Service printed overleaf or available on request and accessible at <http://www.sgs.com>. Attention is drawn to the limitation of liability, indemnification and jurisdiction issues defined therein. Unless otherwise stated the results shown in this Test Report refer only to the sample(s) tested. This Test Report cannot be reproduced except, in full, without prior approval of the Company. Any unauthorized alteration, forgery or falsification of the content or appearance of this test report is unlawful and offenders may be prosecuted to the fullest extent of the law.

この検査報告書は裏面に記載された、もしくは<http://www.sgs.com>で入手可能なサービスに関する一般的条件に則して発行されます。そちらに明記されている弊社の負うべき債務・補償の範囲及び司法管轄の項目をご確認ください。他に特に明記のない限り、この検査報告書に記載された結果は、検査した試料のみに属します。この書面全体の複製以外には、弊社からの事前の許可を得ること無く複製することを禁じます。この検査報告書を無断で変更、偽造、改ざんすることは違法であり、違反者に対しては法的手段を講じることとなります。

JP 289318

## TEST REPORT

REPORT NO. JP/2010/120386

DATE: December 27, 2010

PAGE 4 OF 4

TDK UGO CORPORATION

16-2 TAMACHI IWAKIKAMEDAKAMEDA-MACHI YURIHONJO-SHI AKITA JAPAN

### SAMPLE IMAGE



<END>

This Test Report is issued by the Company under its General Conditions of Service printed overleaf or available on request and accessible at <http://www.sgs.com>. Attention is drawn to the limitation of liability, indemnification and jurisdiction issues defined therein. Unless otherwise stated the results shown in this Test Report refer only to the sample(s) tested. This Test Report cannot be reproduced except, in full, without prior approval of the Company. Any unauthorized alteration, forgery or falsification of the content or appearance of this test report is unlawful and offenders may be prosecuted to the fullest extent of the law.

この検査報告書は裏面に記載された、もしくは<http://www.sgs.com>で入手が可能なサービスに関する一般的条件に則して発行されます。そちらに明記されている弊社の負うべき債務・補償の範囲及び司法管轄の項目をご確認ください。他に特に明記のない限り、この検査報告書に記載された結果は、検査した試料のみに属します。この書面全体の複製以外には、弊社からの事前の許可を得ること無く複製することを禁じます。この検査報告書を無断で変更、偽造、改ざんすることは違法であり、違反者に対しては法的手段を講ずることとなります。

JP 289319



# Test Report

No. : CE/2011/55858 Date : 2011/06/03 Page : 1 of 7



The following sample(s) was/were submitted and identified by/on behalf of the client as:

Sample Description :   
 Style/Item No. : ME   
 Sample Receiving Date : 2011/05/30   
 Testing Period : 2011/05/30 TO 2011/06/03

Material / Manufacturer name are confidential

Test Result(s) : Please refer to next page(s).



Chenyu Kung / Operation Manager  
 Signed for and on behalf of  
 SGS TAIWAN LTD.  
 Chemical Laboratory – Taipei

Unless otherwise stated the results shown in this test report refer only to the sample(s) tested. This test report cannot be reproduced, except in full, without prior written permission of the Company. 除非另有說明，此報告結果僅針對送檢的樣品負責。本報告未經本公司書面許可，不可部份複製。

This document is issued by the Company subject to its General Conditions of Service printed overleaf, available on request or accessible at [www.sgs.com/terms\\_and\\_conditions.htm](http://www.sgs.com/terms_and_conditions.htm) and, for electronic format documents, subject to Terms and Conditions for Electronic Documents at [www.sgs.com/terms\\_e-document.htm](http://www.sgs.com/terms_e-document.htm). Attention is drawn to the limitation of liability, indemnification and jurisdiction issues defined therein. Any holder of this document is advised that information contained hereon reflects the Company's findings at the time of its intervention only and within the limits of Client's instructions, if any. The Company's sole responsibility is to its Client and this document does not exonerate parties to a transaction from exercising all their rights and obligations under the transaction documents. This document cannot be reproduced except in full, without prior written approval of the Company. Any unauthorized alteration, forgery or falsification of the content or appearance of this document is unlawful and offenders may be prosecuted to the fullest extent of the law.

SGS Taiwan Ltd.  
 台灣檢驗科技股份有限公司 | Chemical-Taipei | 33 WuChuan Road, Wuku Industrial Zone, New Taipei City, Taiwan / 新北市五股工業區五權路33號 +886 (0)2299 3279 T +886 (0)2299 3237 [www.sgs.com](http://www.sgs.com)

# Test Report

No. : CE/2011/55858 Date : 2011/06/03 Page : 2 of 7



Material / Manufacturer name are confidential

## Test Result(s)

PART NAME No.1 : BLACK LUMP

Test Item (s):	Unit	Method	MDL	Result
				No.1
Cadmium (Cd)	mg/kg	With reference to IEC 62321: 2008 and performed by ICP-AES.	2	n.d.
Lead (Pb)	mg/kg	With reference to IEC 62321: 2008 and performed by ICP-AES.	2	n.d.
Mercury (Hg)	mg/kg	With reference to IEC 62321: 2008 and performed by ICP-AES.	2	n.d.
Hexavalent Chromium Cr(VI) by alkaline extraction	mg/kg	With reference to IEC 62321: 2008 and performed by UV-VIS.	2	n.d.
<b>Sum of PBBs</b>	mg/kg	With reference to IEC 62321: 2008 and performed by GC/MS.	-	n.d.
Monobromobiphenyl			5	n.d.
Dibromobiphenyl			5	n.d.
Tribromobiphenyl			5	n.d.
Tetrabromobiphenyl			5	n.d.
Pentabromobiphenyl			5	n.d.
Hexabromobiphenyl			5	n.d.
Heptabromobiphenyl			5	n.d.
Octabromobiphenyl			5	n.d.
Nonabromobiphenyl			5	n.d.
Decabromobiphenyl			5	n.d.
<b>Sum of PBDEs</b>			-	n.d.
Monobromodiphenyl ether			5	n.d.
Dibromodiphenyl ether			5	n.d.
Tribromodiphenyl ether			5	n.d.
Tetrabromodiphenyl ether			5	n.d.
Pentabromodiphenyl ether			5	n.d.
Hexabromodiphenyl ether			5	n.d.
Heptabromodiphenyl ether			5	n.d.
Octabromodiphenyl ether			5	n.d.
Nonabromodiphenyl ether	5	n.d.		
Decabromodiphenyl ether	5	n.d.		

Unless otherwise stated the results shown in this test report refer only to the sample(s) tested. This test report cannot be reproduced, except in full, without prior written permission of the Company. 除非另有說明，此報告結果僅針對送檢的樣品負責。本報告未經本公司書面許可，不可部份複製。

This document is issued by the Company subject to its General Conditions of Service printed overleaf, available on request or accessible at [www.sgs.com/terms\\_and\\_conditions.htm](http://www.sgs.com/terms_and_conditions.htm) and, for electronic format documents, subject to Terms and Conditions for Electronic Documents at [www.sgs.com/terms\\_e-document.htm](http://www.sgs.com/terms_e-document.htm). Attention is drawn to the limitation of liability, indemnification and jurisdiction issues defined therein. Any holder of this document is advised that information contained hereon reflects the Company's findings at the time of its intervention only and within the limits of Client's instructions, if any. The Company's sole responsibility is to its Client and this document does not exonerate parties to a transaction from exercising all their rights and obligations under the transaction documents. This document cannot be reproduced except in full, without prior written approval of the Company. Any unauthorized alteration, forgery or falsification of the content or appearance of this document is unlawful and offenders may be prosecuted to the fullest extent of the law.

# Test Report

No. : CE/2011/55858 Date : 2011/06/03 Page : 3 of 7



Material / Manufacturer name are confidential

Test Item (s):	Unit	Method	MDL	Result
				No.1
<b>Halogen</b>				
Halogen-Fluorine (F) (CAS No.: 14762-94-8)	mg/kg	With reference to BS EN 14582:2007. Analysis was performed by IC.	50	n.d.
Halogen-Chlorine (Cl) (CAS No.: 22537-15-1)			50	549
Halogen-Bromine (Br) (CAS No.: 10097-32-2)			50	n.d.
Halogen-Iodine (I) (CAS No.: 14362-44-8)			50	n.d.

**Note :**

1. mg/kg = ppm : 0.1wt% = 1000ppm
2. n.d. = Not Detected
3. MDL = Method Detection Limit
4. " - " = Not Regulated

Unless otherwise stated the results shown in this test report refer only to the sample(s) tested. This test report cannot be reproduced, except in full, without prior written permission of the Company. 除非另有說明，此報告結果僅針對送檢的樣品負責。本報告未經本公司書面許可，不可部份複製。

This document is issued by the Company subject to its General Conditions of Service printed overleaf, available on request or accessible at [www.sgs.com/terms\\_and\\_conditions.htm](http://www.sgs.com/terms_and_conditions.htm) and, for electronic format documents, subject to Terms and Conditions for Electronic Documents at [www.sgs.com/terms\\_e-document.htm](http://www.sgs.com/terms_e-document.htm). Attention is drawn to the limitation of liability, indemnification and jurisdiction issues defined therein. Any holder of this document is advised that information contained hereon reflects the Company's findings at the time of its intervention only and within the limits of Client's instructions, if any. The Company's sole responsibility is to its Client and this document does not exonerate parties to a transaction from extending all their rights and obligations under the transaction documents. This document cannot be reproduced except in full, without prior written approval of the Company. Any unauthorized alteration, forgery or falsification of the content or appearance of this document is unlawful and offenders may be prosecuted to the fullest extent of the law.



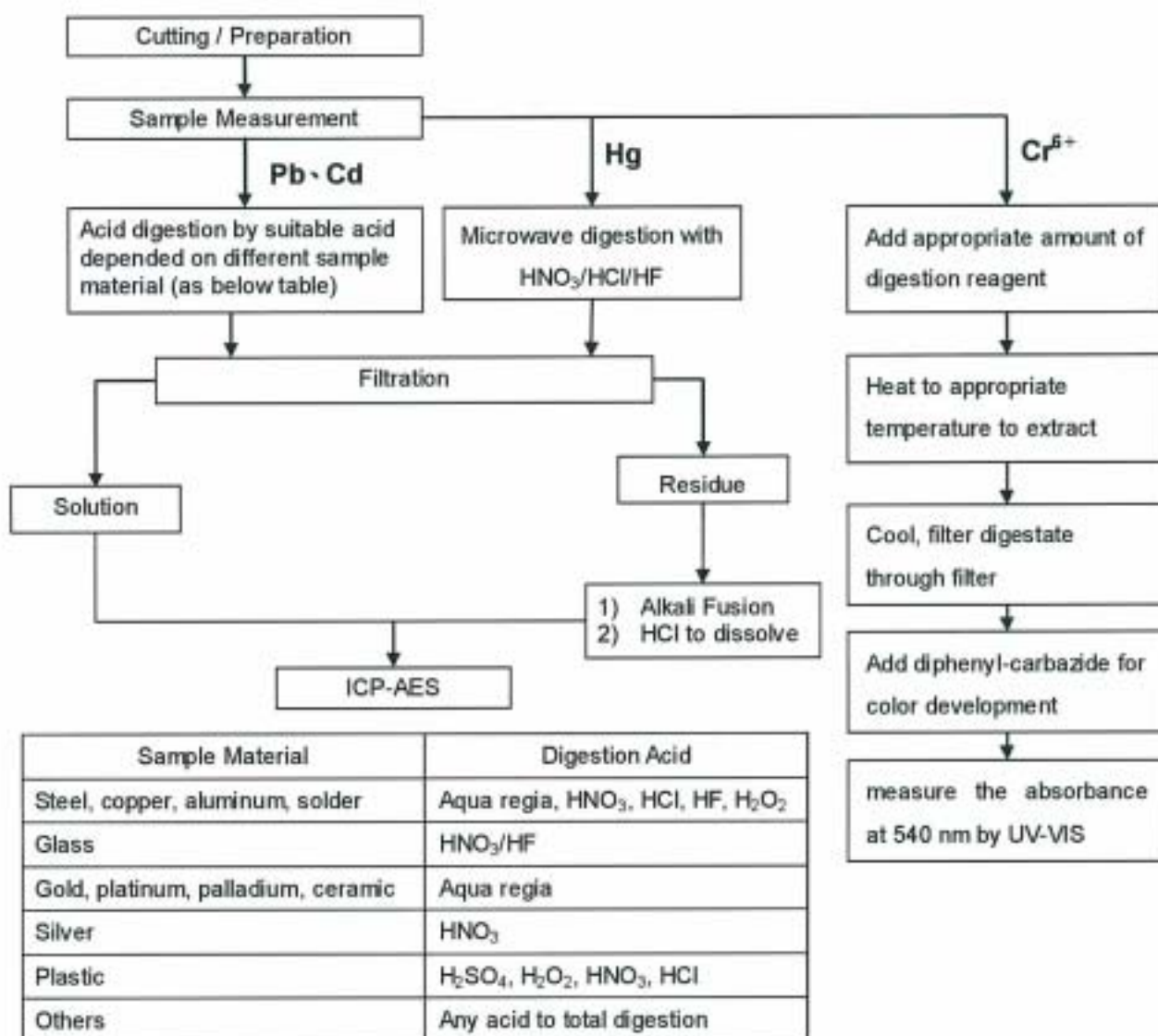
## Test Report

No. : CE/2011/55858 Date : 2011/06/03 Page : 4 of 7



Material / Manufacturer name are confidential

- 1) These samples were dissolved totally by pre-conditioning method according to below flow chart.  
(Cr<sup>6+</sup> test method excluded)
- 2) Name of the person who made measurement: Climbgreat Yang
- 3) Name of the person in charge of measurement: Troy Chang



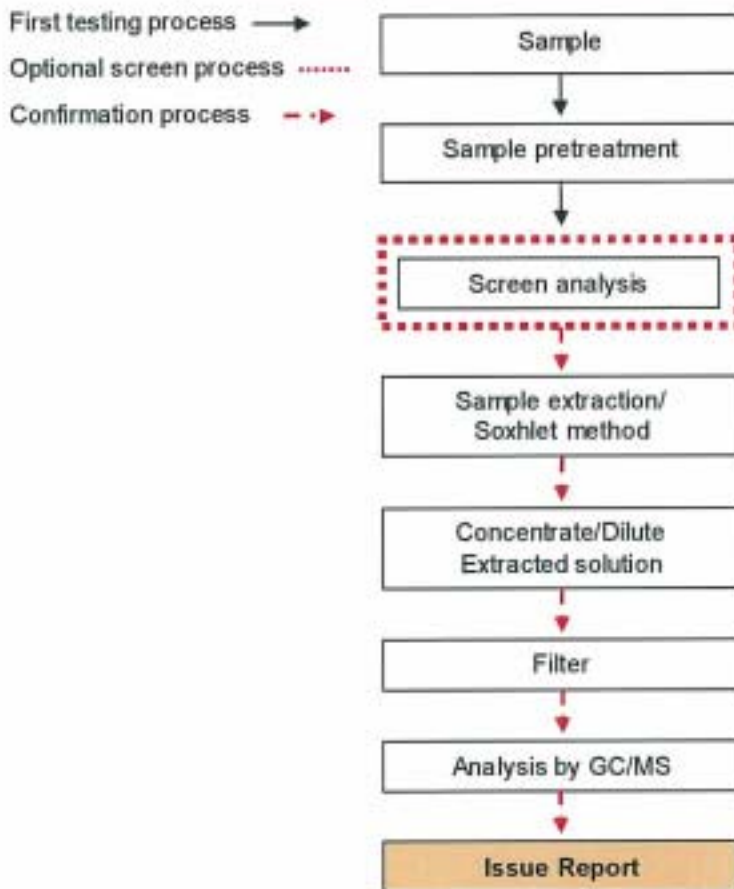
Unless otherwise stated the results shown in this test report refer only to the sample(s) tested. This test report cannot be reproduced, except in full, without prior written permission of the Company. 除非另有說明，此報告結果僅對測試的樣品負責。未經本公司書面許可，不可部分複製。  
This document is issued by the Company subject to its General Conditions of Service printed overleaf, available on request or accessible at [www.sgs.com/terms\\_and\\_conditions.htm](http://www.sgs.com/terms_and_conditions.htm) and, for electronic format documents, subject to Terms and Conditions for Electronic Documents at [www.sgs.com/terms\\_e-document.htm](http://www.sgs.com/terms_e-document.htm). Attention is drawn to the limitation of liability, indemnification and jurisdiction issues defined therein. Any holder of this document is advised that information contained herein reflects the Company's findings at the time of its intervention only and within the limits of Client's instructions, if any. The Company's sole responsibility is to its Client and this document does not exonerate parties to a transaction from exercising all their rights and obligations under the transaction documents. This document cannot be reproduced except in full, without prior written approval of the Company. Any unauthorized alteration, forgery or falsification of the content or appearance of this document is unlawful and offenders may be prosecuted to the fullest extent of the law.



Material / Manufacturer name are confidential

## PBB/PBDE analytical FLOW CHART

- 1) Name of the person who made measurement: Roman Wong
- 2) Name of the person in charge of measurement: Troy Chang



Unless otherwise stated the results shown in this test report refer only to the sample(s) tested. This test report cannot be reproduced, except in full, without prior written permission of the Company. 除非另有說明，此報告結果僅對測試的樣品負責。本報告未經本公司書面許可，不可部份複製。

This document is issued by the Company subject to its General Conditions of Service printed overleaf, available on request or accessible at [www.sgs.com/terms\\_and\\_conditions.htm](http://www.sgs.com/terms_and_conditions.htm) and, for electronic format documents, subject to Terms and Conditions for Electronic Documents at [www.sgs.com/terms\\_e-document.htm](http://www.sgs.com/terms_e-document.htm). Attention is drawn to the limitation of liability, indemnification and jurisdiction issues defined therein. Any holder of this document is advised that information contained hereon reflects the Company's findings at the time of its intervention only and within the limits of Client's instructions, if any. The Company's sole responsibility is to its Client and this document does not exonerate parties to a transaction from exercising all their rights and obligations under the transaction documents. This document cannot be reproduced except in full, without prior written approval of the Company. Any unauthorized alteration, forgery or falsification of the content or appearance of this document is unlawful and offenders may be prosecuted to the fullest extent of the law.

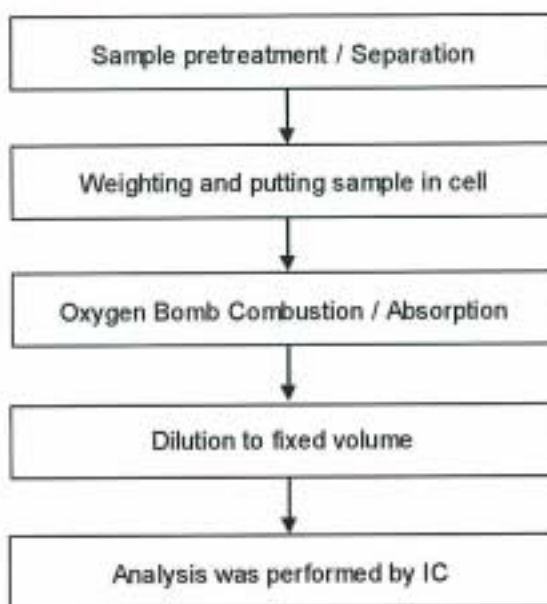




Material / Manufacturer name are confidential

### Analytical flow chart of halogen content

- 1) Name of the person who made measurement: Rita Chen
- 2) Name of the person in charge of measurement: Troy Chang



Unless otherwise stated the results shown in this test report refer only to the sample(s) tested. This test report cannot be reproduced, except in full, without prior written permission of the Company. 除非另有說明，此報告結果僅針對測試的樣品負責。本報告未經本公司書面許可，不可部份複製。

This document is issued by the Company subject to its General Conditions of Service printed overleaf, available on request or accessible at [www.sgs.com/terms\\_and\\_conditions.htm](http://www.sgs.com/terms_and_conditions.htm) and, for electronic format documents, subject to Terms and Conditions for Electronic Documents at [www.sgs.com/terms\\_e-document.htm](http://www.sgs.com/terms_e-document.htm). Attention is drawn to the limitation of liability, indemnification and jurisdiction issues defined therein. Any holder of this document is advised that information contained hereon reflects the Company's findings at the time of its intervention only and within the limits of Client's instructions, if any. The Company's sole responsibility is to its Client and this document does not exonerate parties to a transaction from exercising all their rights and obligations under the transaction documents. This document cannot be reproduced except in full, without prior written approval of the Company. Any unauthorized alteration, forgery or falsification of the content or appearance of this document is unlawful and offenders may be prosecuted to the fullest extent of the law.

## Test Report

No. : CE/2011/55858 Date : 2011/06/03 Page : 7 of 7



Material / Manufacturer name are confidential



\*\* End of Report \*\*

Unless otherwise stated the results shown in this test report refer only to the sample(s) tested. This test report cannot be reproduced, except in full, without prior written permission of the Company. 除非另有說明，此報告結果僅針對測試的樣品負責。本報告未經本公司書面許可，不可翻印複製。

This document is issued by the Company subject to its General Conditions of Service printed overleaf, available on request or accessible at [www.sgs.com/terms\\_and\\_conditions.htm](http://www.sgs.com/terms_and_conditions.htm) and, for electronic format documents, subject to Terms and Conditions for Electronic Documents at [www.sgs.com/terms\\_e-document.htm](http://www.sgs.com/terms_e-document.htm). Attention is drawn to the limitation of liability, indemnification and jurisdiction issues defined therein. Any holder of this document is advised that information contained hereon reflects the Company's findings at the time of its intervention only and within the limits of Client's instructions, if any. The Company's sole responsibility is to its Client and this document does not exonerate parties to a transaction from exercising all their rights and obligations under the transaction documents. This document cannot be reproduced except in full, without prior written approval of the Company. Any unauthorized alteration, forgery or falsification of the content or appearance of this document is unlawful and offenders may be prosecuted to the fullest extent of the law.