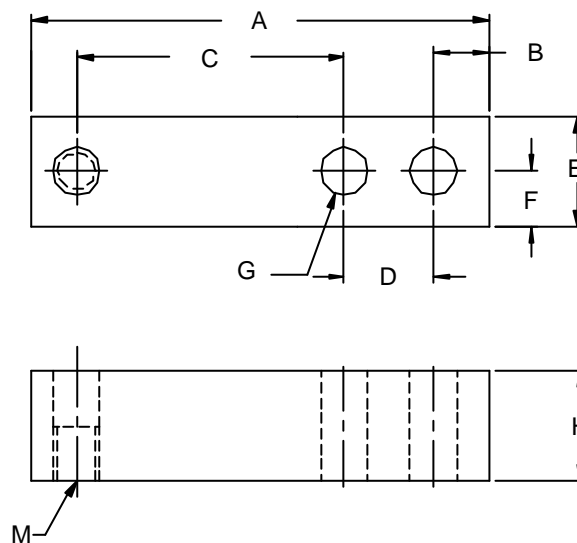


- 1 Single Ended Shear Beams / 悬臂梁传感器

SBS Alloy Steel / 合金钢



DIMENSIONS / 外形尺寸



	A	B	C	D	E	F	G	H	M
250lb-5kib	130.00	15.70	76.20	25.40	31.80	15.90	φ13.50	31.80	1/2-20 UNF
5kib-15kib	171.40	19.00	95.20	38.10	37.40	18.70	φ19.80	37.40	3/4-16 UNF
15kib-20kib	222.20	25.40	120.60	50.80	50.00	25.00	φ26.20	50.00	1'-14 UNS
125kg-2.5t	130.00	15.70	76.20	25.40	31.80	15.90	φ13.50	31.80	M12X1.75
2.5t-7.5t	171.40	19.00	95.20	38.10	37.40	18.70	φ19.80	37.40	M18X1.50
7.5t-10t	222.20	25.40	120.60	50.80	50.00	25.00	φ26.20	50.00	M24X1.75

CAPACITY / 量程

250lb 500lb 750lb 1000lb 2000lb 2500lb 3000lb 4000lb 5000lb
10000lb 15000lb 20000lb

125kg 250kg 450kg 500kg 1000kg 1500kg 2000kg 2500kg
5000kg 7500kg 10000kg

SPECIFICATION / 技术参数

Rated Output/额定输出	3.0mV/V±0.1% / 2.0mV/V±0.1%
Zero Balance/零点平衡	± 1% of rated output
Creep after 20 minutes/蠕变	± 0.03% of rated output
Nonlinearity/非线性	± 0.03% of rated output
Hysteresis/滞后	±0.03% of rated output
Repeatability/重复性	±0.03% of rated output
Temp. effect on output/灵敏度温漂	0.002% of applied output/°C
Temp. effect on zero/零点温漂	0.002% of rated output/°C
Safe Temp. Range 可用温度范围	-10°C to + 80°C
Temp. Compensated/温度补偿范围	-10°C to + 50°C
Safe Overload/安全载荷	150%
Input Impedance/输入阻抗	387 ohm ± 5 ohm
Output Impedance/输出阻抗	350 ohm ± 3 ohm
Insulation Resistance/绝缘阻抗	5000 M ohm
Rated Excitation/推荐激励电压	10V DC/AC
Maximum Excitation/最大激励电压	15V DC/AC
Cable Length/导线长度	6m / 1067cm

SCHEMATIC / 接线方式

红色：+ 激励
黑色：- 激励
绿色：+ 信号
白色：- 信号

