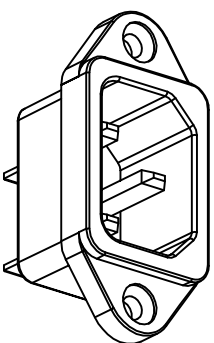
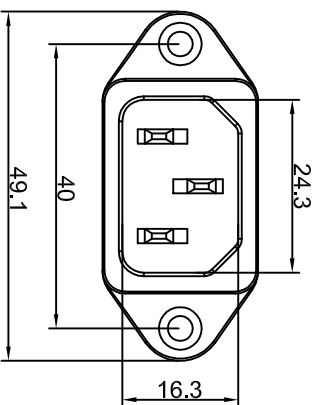







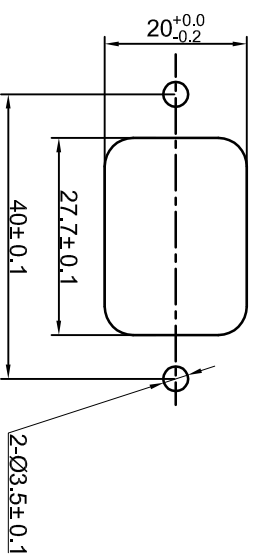
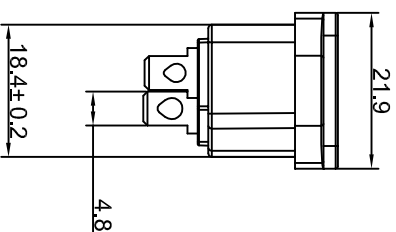
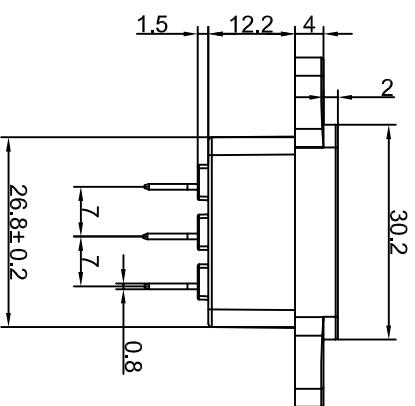
宏聚电子五金制品有限公司

HONGJU ELECTRONIC & METAL PRODUCTS CO.,LTD

S-03-11-1



Rating: 15A 250V AC (UL CUL)  
 10A 250V AC (VDE CCC) 
 Insulation Resistance: DC 500V 100MΩ Min.
 Dielectric Strength: AC2000V 1 minute
 MATERIAL:
 Body: PBT
 Terminal: Brass, Silver or Tin plated



CUT-OUT

公差 TOLERANCES		.X±0.3	.XX±0.15	角度 ANGLE ±1°	单位 DIMENSION UNIT	mm.
版本 VERSION	A0	比例尺 SCALE	NONE	日期 DATE	品名 TITLE	图号 DRAWING NO
版本 VER.	New Issue	核对 CHECKED BY	Gokey_Guo	绘图 DRAWN BY	S-03-11-1	S-03-11-1_A0
	变更说明 CHANGE DESCRIPTION	日期 DATE	ECN NO.	批准 APPROVED BY		
		2008.07.08	N/A	Xinchao_Lee		