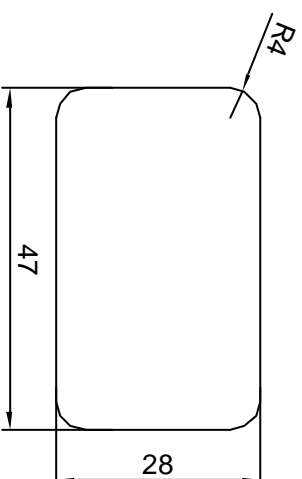
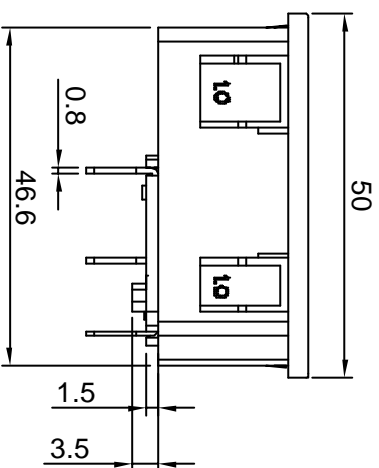
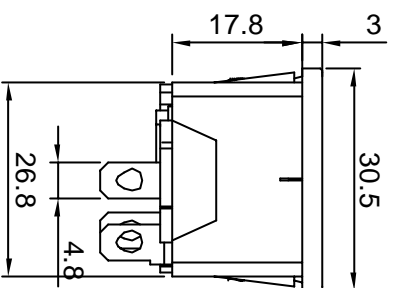
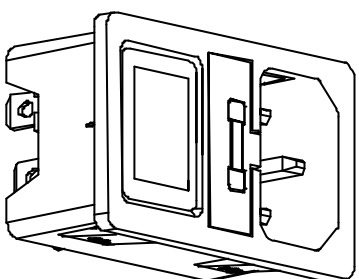
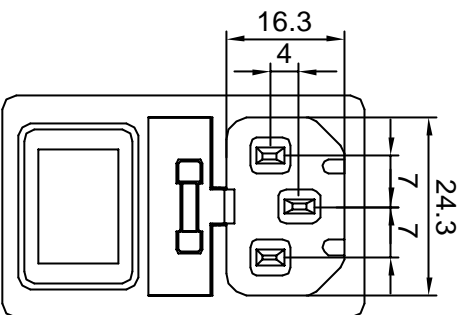


深圳市宏聚电子有限公司

HONGJU (SHENZHEN) ELECTRIC CO.,LTD



CUT-OUT

Rating: 10A 250V AC (UL CUL)

10A 250V AC (VDE)

10A 250V AC (CCC)



Insulation Resistance: DC 500V 100M Ω Min

Dielectric Strength: AC2000V 1 minute

Fuse: Ø5.0x20mm



MATERIAL:

Body:Nylon66

Terminal:Brass,silver or tin plated

修正	REVISION	说明	DESCRIPTION	核准	APPROVAL BY	公差	TOLERANCES	X±0.3	XX±0.15	角度	ANGLE	1°	单位	DIMENSION UNIT		mm.						
						绘图	DRAWN BY	李双	设计	DESIGNED BY	李双	比例尺	SCALE	1:1	品名	TITLE	图号	DRAWING NO	材质	MATERIAL	处理	FINISH
						核对	CHECKED BY	李新超	核准	APPROVED BY	李新超	日期	DATE	2006 08 17	S-03F-12S							