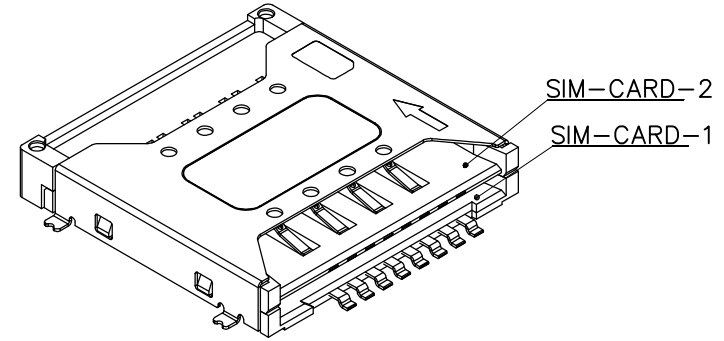
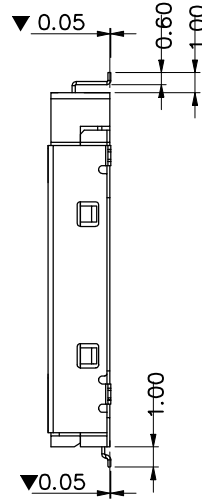
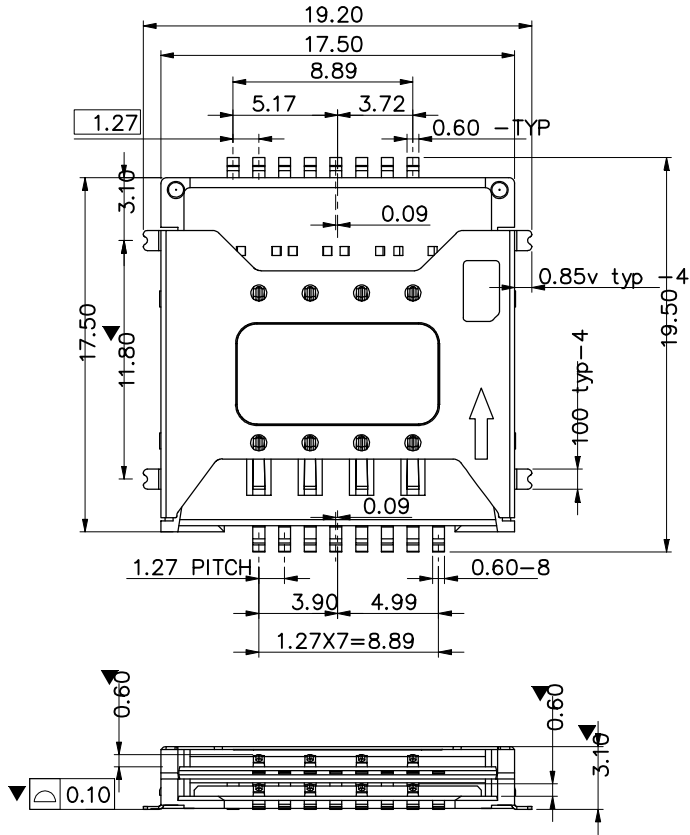


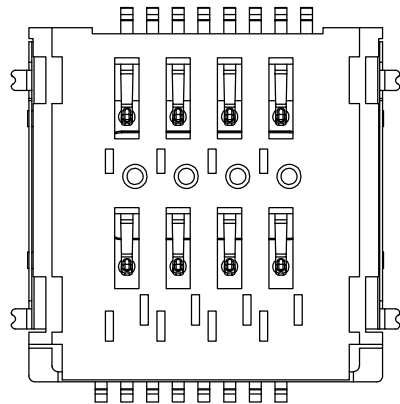
CAD GENERATED DRAWING. DON'T CHANGE BY HAND.

REV.	DESCRIPTION	DESIGN
A0	Initial Release	



NOTES:

- 1.MATERIAL: LCP,BLACK,UL 94V-0
- 2.HEAT-RESISANT260 30s
- 3.GP PASSED ACCORD WITH RoHS STANDARD.
- 4.THE BURR MUST BE LESS THAN 0.03mm.
- 5.THE ROUND WITHOUT NOTE IS 0.1mm.
- 6.ALL DIMENSIONS MARKED ▼ MUST BE CONTROLLED BY QC.

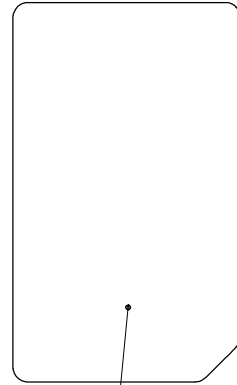
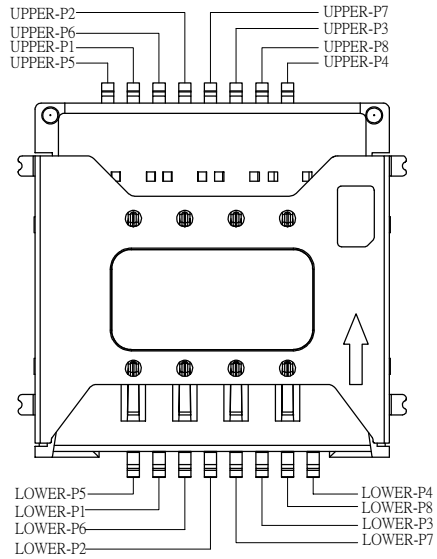


PART NO.: <b>HYAS12003001</b>		TITLE: CUSTOMER DWG. <b>双层SIM卡座 h=3.10mm</b>	
APPD:		DWG NO.:	
CHKD:		UNITS SCALE SHEET REV.	
DR:		mm N/A 1/2 A0	

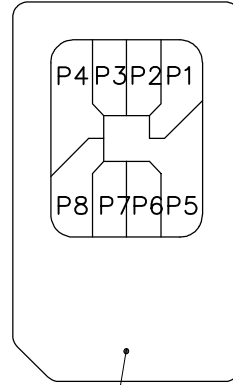
DIM	TOL	DIM	TOL
X.	±0.30	X.*	± 2°
.X	±0.25	.X*	± 1°
.XX	±0.20	.XX*	± 0.5°
.XXX	±0.15		

CAD GENERATED DRAWING. DON'T CHANGE BY HAND.

REV.	DESCRIPTION	DESIGN
A0	Initial Release	

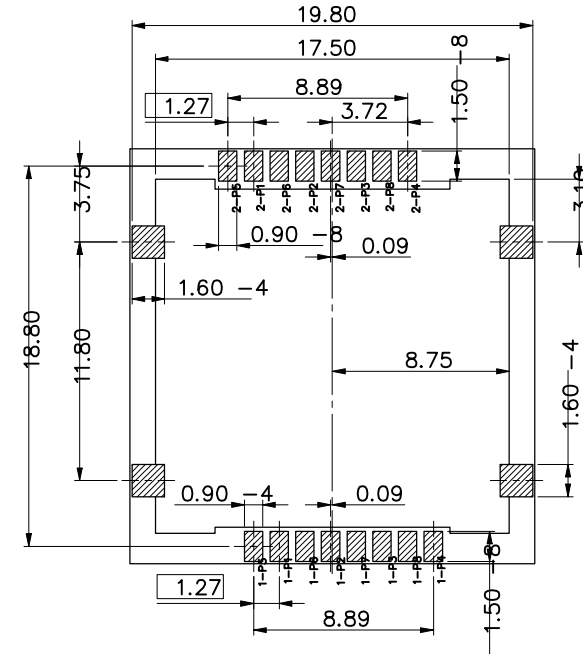


upper simcard



nether simcard

SIM CARD SPEC




NOTES:

- 1.MATERIAL: LCP, BLACK, UL 94V-0
- 2.HEAT-RESISANT260 30s
- 3.GP PASSED ACCORD WITH RoHS STANDARD.
- 4.THE BURR MUST BE LESS THAN 0.03mm.
- 5.THE ROUND WITHOUT NOTE IS 0.1mm.
- 6.ALL DIMENSIONS MARKED ▼ MUST BE CONTROLLED BY QC.

SIM Card terminal NO	Pin NO
Pin 1	vcc: pwr signal and GND
Pin 2	RST: Reset signal
Pin 3	CLK: Clcking signal
Pin 4	reserved
Pin 5	GND: PWR signal and GND
Pin 6	vpp: programing voltage
Pin 7	I/O: seral date input/output
Pin 8	reserved

DIM	TOL	DIM	TOL
.X	±0.30	.X°	± 2°
.X	±0.25	.X°	± 1°
.XX	±0.20	.XX°	± 0.5°
.XXX	±0.15		


深圳市宏艺康精密零组件有限公司

PART NO.: <b>HYAS12003001</b>		TITLE: CUSTOMER DWG. <b>双层SIM卡座 h=3.10mm</b>									
APPD:		DWG NO.:									
CHKD:		<table border="1" style="font-size: small;"> <tr> <th>UNITS</th> <th>SCALE</th> <th>SHEET</th> <th>REV.</th> </tr> <tr> <td>mm</td> <td>N/A</td> <td>2/2</td> <td>A0</td> </tr> </table>		UNITS	SCALE	SHEET	REV.	mm	N/A	2/2	A0
UNITS	SCALE	SHEET	REV.								
mm	N/A	2/2	A0								
DR:		