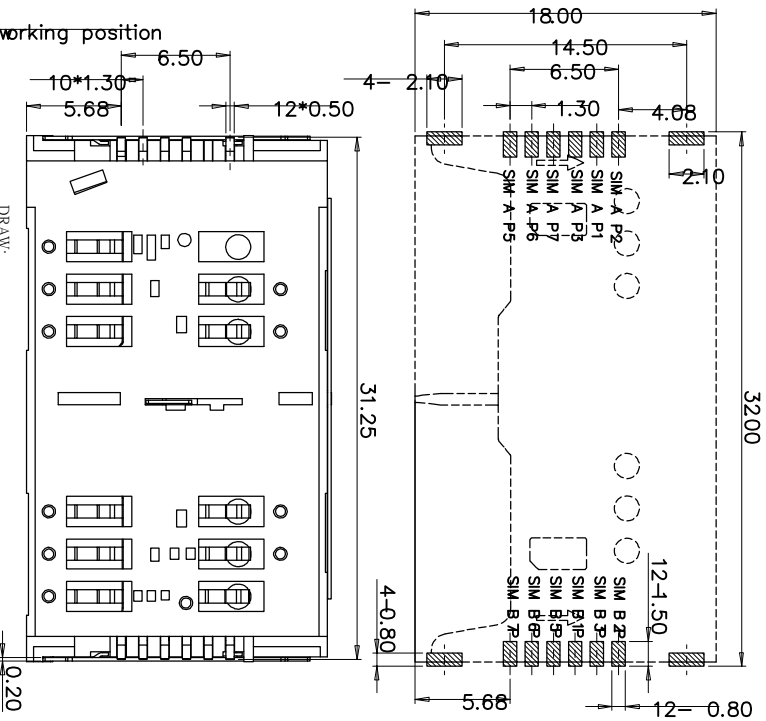
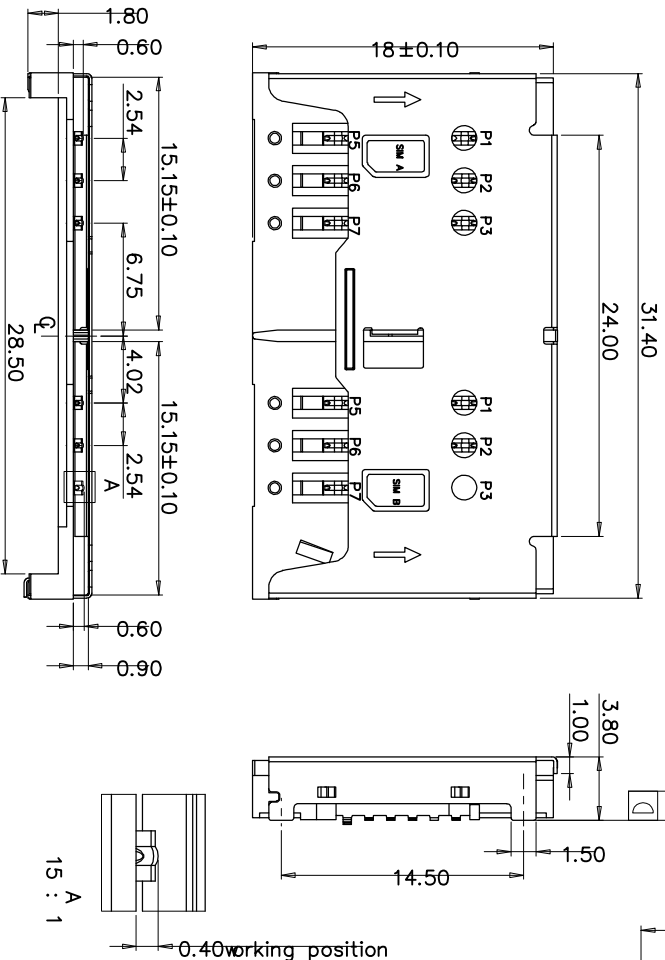
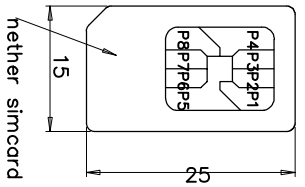


SIM Card terminal NO	Pin NO
Pin 1	vcc:pwr signal and GND
Pin 2	RST Reset signa
Pin 3	CLK:Clcking signa
Pin 4	reserved
Pin 5	GND:PWR signal and GND
Pin 6	vpp:programming voltage
Pin 7	I/O:serial date input/output
Pin 8	reserved



DRAW:
 NOTES:
 1.MATERIAL:
 HOUSING:CP, GLASS FILLED, UL 94V-0
 CONTACT:PHOSPHORBRONZE, T=0.15mm,
 SHELL:STAINLESS STEEL,T=0.20mm,
 ZFINISH:
 CONTACT:40-150" UNDER PLATING ALL OVER.
 SHELL:SELECTIVE GOLD FLASH IN MINIAL OVER,
 GOLD FLASH IN SOLDER TAIL AREA
 UNDERPLATING40-150" NICKEL OVERALL.
 3.ALL DIMENSIONS MARKED MUST BE CONTROLLED BY QC.

REV.	DESCRIPTION	DESIGN
A0	Initial Release	



深圳市宏艺精密组件有限公司

PART NO.: HYAS06003801
 TITLE: CUSTOMER DWG.
 规格3.81 SIM卡座(兼容1.80U)

APPD:
 DVG NO.:

DIM	TOL	DIM	TOL
X	±0.30	X*	±2°
XX	±0.25	XX*	±1°
XXX	±0.20	XXX*	±0.5°
	±0.15		

DR:	UNITS	SCALE	SHEET	REV.
	mm	N/A	1/1	A0