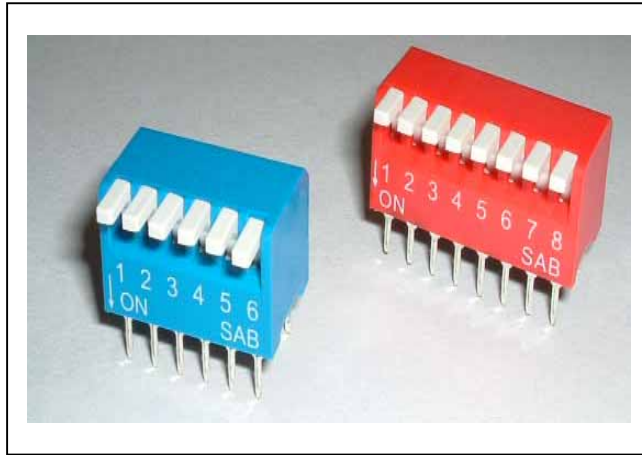


DIPSWITCH DATA SHEET

BP SERIES



YIKAI ELECTRONIC CO., LTD.

TEL:+86-755-82863091 FAX:+86-755-82863454

Http://www.yikaisz.com Email: sales@bjyikai.com

BP SPECIFICATION - RoHS Compliant	SP-001	Page
		1/5
1. Electronical Characteristic		
1.1 Contact Rating	a) Steady situation: 100mA, 50 VDC	
	b) Make and Break: 25mA, 24 VDC, or 100mA, 50 VDC	
1.2 Contact Resistance	a) 30 m maximum initial.	
	b) 50 m maximum after soldering .	
1.3 Electrical Life	2,000 times with loading.	
	3,000 times without loading	
1.4 Insulation Resistance	100 M min. at 500 VDC.	
1.5 Dielectric strength	500 VDC / 1 minute.	
1.6 Capacitance	5 pF max., measured at 1 Mhz.	
2. Mechanical and Environmental Characteristic		
2.1 Mechanical Life	3,000 times for per switch position.	
2.2 Operating Force	1,000 gf max.	
2.3 Vibration	Subject mounted switches in the ON position to 3.13 G's rms between 5-500 Hz. 15 minutes in each of 3 mutually perpendicular planes.	
	Requirement : No discontinuities of 1 microsecond or longer duration.	
2.4 Shock	Subject mounted switches in the ON position to 30 G's half-sine shock pulses of 11 milliseconds duration. 3 shocks in each direction applied along 3 mutually perpendicular planes, 18 total shocks.	
	Requirement : No discontinuities of 1 microsecond or longer duration.	
2.5 Thermal Shock	Subject uncounted switches in the OFF position to 5 cycles between -20 and 85	
	Requirement : No discontinuities of 1 microsecond or longer duration.	
2.6 Humidity-temperature cycling.	Subject uncounted switches in the OFF position to 10, 24 hours cycles between 25 and 65 at 95 % RH	
2.7 Actuation force.	Measure force necessary to move the actuator from the OFF to the ON and return to the OFF position.	
	Repeat for a minimum of 10 position.	

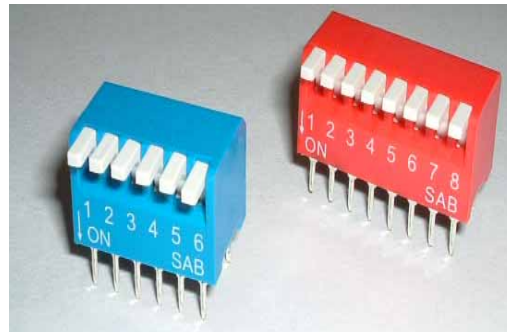
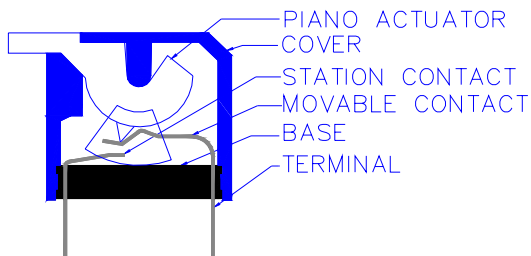
	Requirement :
	100 to 1,000 gf initial.
	60m Min. final.
2.8 Resistance to soldering heat.	Subject switches in the OFF position to 255 ± 5 For 55 ± 5 seconds.
2.9 Operating Temperature :	-20°C to +85°C
2.10 Storage Temperature :	-40°C to +85°C

3. Materials and Finishes

MATERIALS:

PART	MATERIAL	FINISH
COVER	PBT UL 94-V0	Blue
BASE	PA66 UL 94-V0	Black
ACTUATOR	PBT UL 94-V0	White
TERMINAL CONTACT	Brass	Gold Plate
MOVABLE CONTACT	Brass	Gold Plate
TERMINAL	Brass	Tin Plate

STRUCTURE



4. Soldering conditions :

(1) Hand soldering

Device: Solder iron 30 W Max

a: 350 Max. 3 sec. Max

b: 275 Max. 10 sec. Max.

(2) Wave soldering

Temperature: 260 10 sec. Max

When soldering two or more terminals to the common land, use solder resist to solder them independently.

5. Flux Cleaning

- (1) Solvent: Fluorine or Alcohol type.
- (2) Cleaning shall be made when terminal temperature falls to 90 or lower, or, leave the switch at normal temperature for 5 minutes or longer, before cleaning.
- (3) "L" type un-washable.
DO NOT operate the switch during soldering and cleaning.

6. Switch operation and Taping

- (1) Use tweezers or ball-point pen for operation.
- (2) Flux cleaning should be done without removing the Tape.

If the tape is removed, it adheres less than before when it is placed back on, possibly causing flux inflow.

7. Packing :

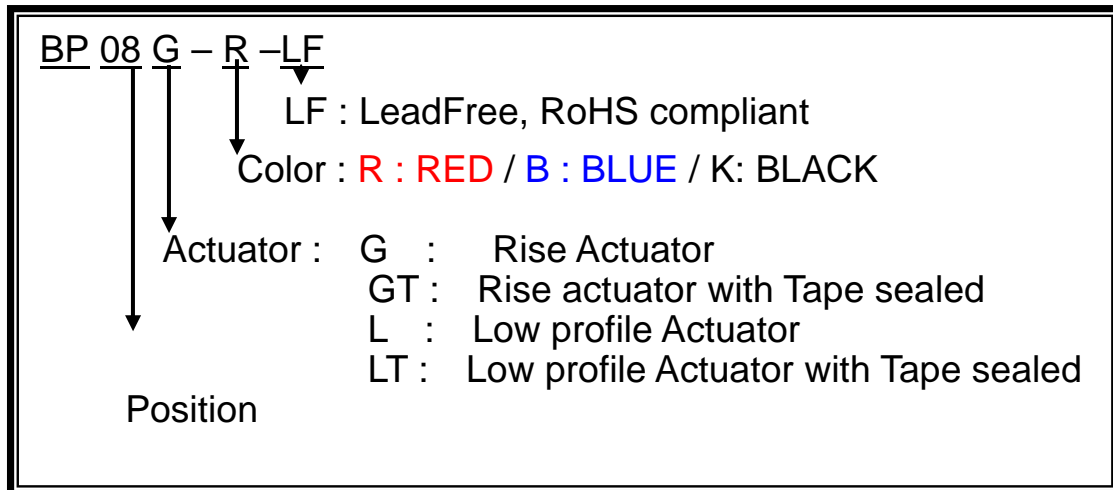
49 Tubes / BOX

4 BOXES/CTN

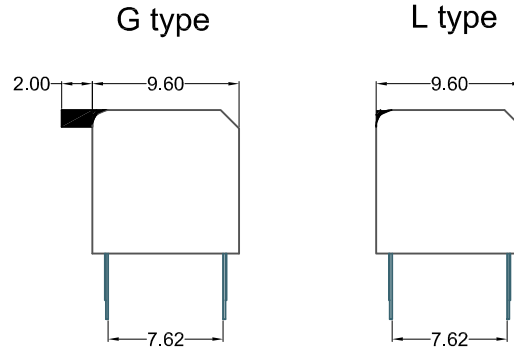
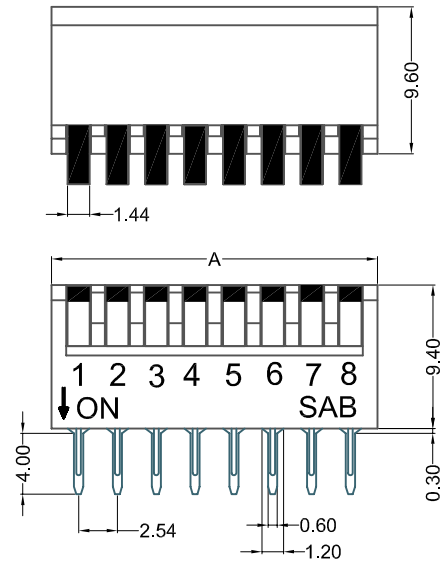
Pole	1	2	3	4	5	6	7	8	9	10	12
Tube	144	85	61	47	38	32	28	24	22	19	16

No. of Positions	Quantity Per Box	G.W Per Box	Quantity Carton	G.W. Carton
1	7,056	3.7 Kgs	28,224	16.0Kgs
2	4,165	3.7 Kgs	16,660	16.0Kgs
3	2,989	3.7 Kgs	11,956	16.0Kgs
4	2,303	3.5 Kgs	9,212	15.0 Kgs
5	1,862	3.5 Kgs	7,448	15.0 Kgs
6	1,568	3.6 Kgs	6,272	15.0 Kgs
7	1,323	3.6 Kgs	5,292	15.0 Kgs
8	1,176	3.5 Kgs	4,704	15.0 Kgs
9	1,029	3.5 Kgs	4,116	15.0 Kgs
10	931	3.5 Kgs	3,724	15.0 Kgs
12	784	3.4 Kgs	3,136	14.5 Kgs

8. Order information



MODEL NO:BP series



DIMENSIONS:

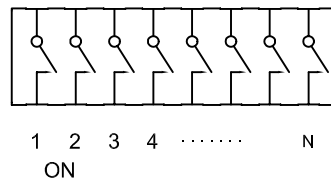
RoHS Compliant

POLE	1	2	3	4	5	6	7	8	9	10	12
A±0.2	3.54	6.08	8.62	11.16	13.70	16.24	18.78	21.32	23.86	26.40	31.48
L	0	2.54	5.08	7.62	10.16	12.70	15.24	17.78	20.32	22.86	27.94

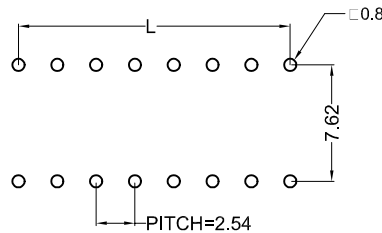
MATERIALS:

PART	MATERIAL	FINISH
COVER	PBT UL 94V-0	Blue/Red
BASE	PA66 UL 94V-0	Black
PIANO ACTUATOR	PA66 UL 94V-0	White
STATION CONTACT	Brass	Gold Plated
MOVABLE CONTACT	Brass	Gold Plated
TERMINAL	Brass	Tin Plated

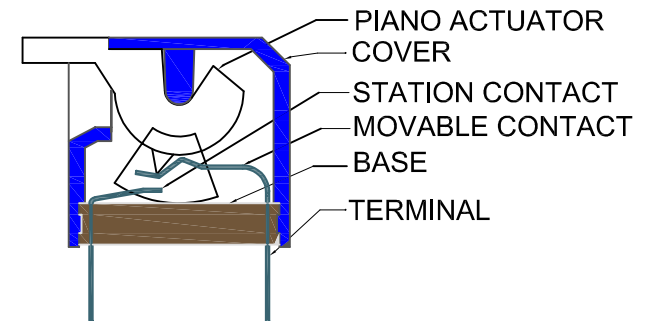
WIRING DIAGRAM



DRILLING PLAN



STRUCTURE



APPROVED BY	David Wu	DESIGNED BY		SCALE		TOLANCE	0.1~1.0 ±0.05 1.0~5.0 ±0.1	5.0~10.0 ±0.2 10.0~20.0 ±0.3	DRAWING NO.
CHECKED BY	PeiHsuan	DRAWIN BY	Zhcan	UNIT	mm	DATE	16 JUNE,2005		BP series