

# TEST REPORT

NO.: A002C1012131004S-2

Date: Dec. 16, 2010

Page 1 of 4

**Customer:** Chuangyi Electronic (Kunshan) Co., Ltd.

**Address:** No.367-1, Youbi Road, Kunshan City, Jiangsu, China

**Report on the submitted sample said to be**

**Sample name:** PET BACKING INDUSTRIAL DOUBLE SIDED ADHESIVE TAPES

**Model:** /

**Item/Lot No.:** /

**Material:** /

**Buyer:** /

**Supplier:** Chuangyi Electronic (Kunshan) Co., Ltd.

**Manufacturer:** /

**Sample received date:** Dec. 13, 2010

**Testing period:** From Dec. 13, 2010 to Dec. 16, 2010

**Testing Requested:**

As specified by client, to determine the Lead, Cadmium, Mercury, Hexavalent Chromium, PBB & PBDE content in the submitted sample in accordance with Directive 2002/95/EC (RoHS).

**Testing method:**

Testing Item	Pretreatment method	Measuring instrument	MQL
Lead (Pb)	IEC 62321: 2008, section 8	ICP-OES	2mg/kg
Cadmium (Cd)	IEC 62321: 2008, section 8	ICP-OES	2 mg/kg
Mercury (Hg)	IEC 62321: 2008, section 7	ICP-OES	2 mg/kg
Chromium (Cr VI)	IEC 62321: 2008, Annex C	UV-VIS	2 mg/kg
PBBs/ PBDEs	IEC 62321: 2008, Annex A	GC-MS	5 mg/kg

**Conclusion:**

-When tested as specified the submitted sample complied with the requirements of commission Decision of 18 Aug 2005 amending Directive 2002/95/EC notified under document 2005/618/EC.

\*\*\*\*\*FOR FURTHER DETAILS, PLEASE REFER TO THE FOLLOWING PAGE(S)\*\*\*\*\*

Written by  
(Reporter)

Sheny

Approved by  
(Lab manager)

Wickeng

Inspected by

(Technical manager)

Weikin

# TEST REPORT

NO.: A002C1012131004S-2

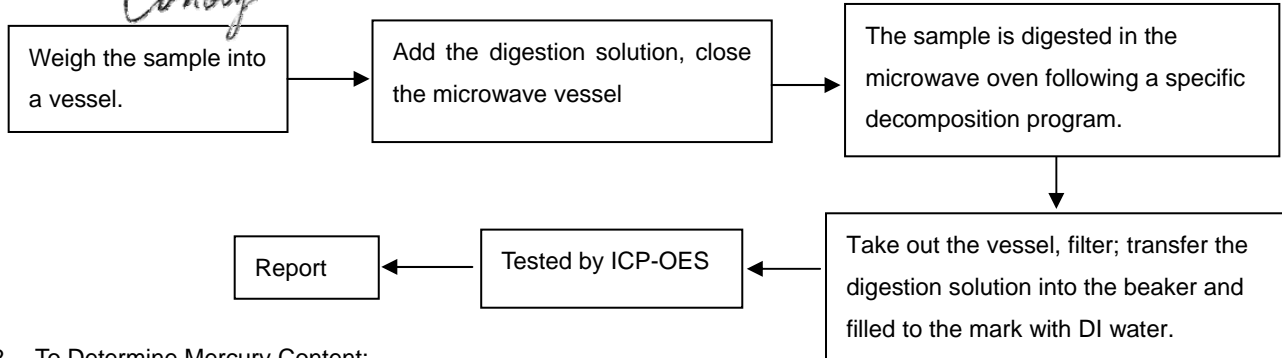
Date: Dec. 16, 2010

Page 2 of 4

## Test Flow:

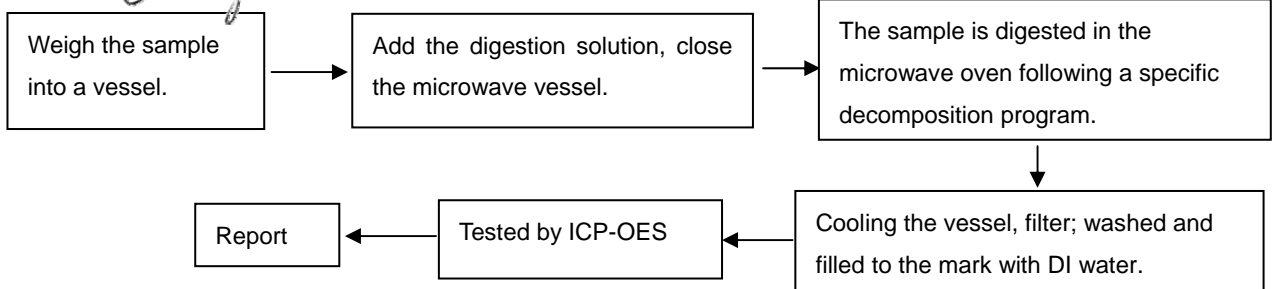
### 1. To Determine Lead, Cadmium Content:

Tested by: *Condy*



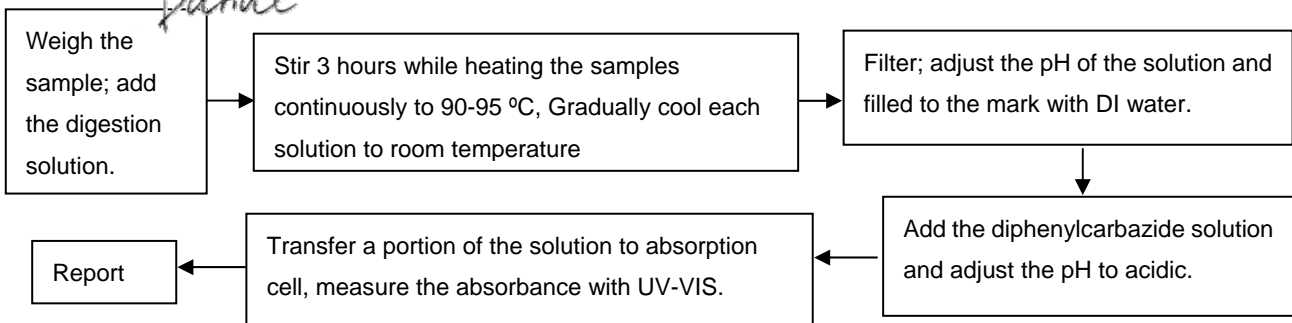
### 2. To Determine Mercury Content:

Tested by: *Condy*



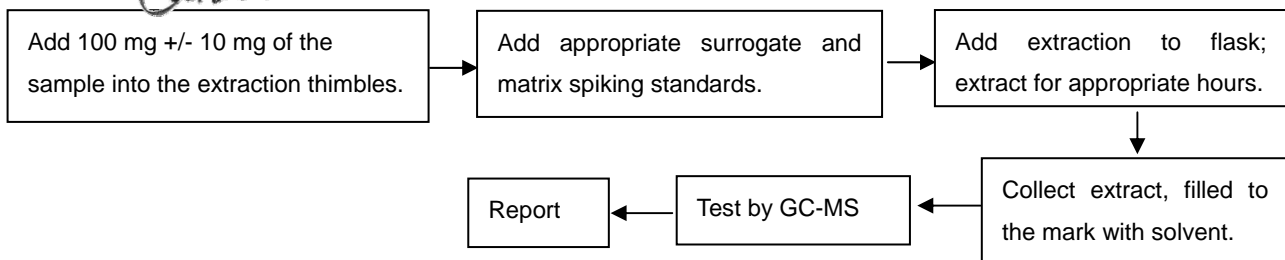
### 3. To Determine Hexavalent Chromium Content (for Polymer):

Tested by: *Danae*



### 4. To Determine PBBs/PBDEs Content:

Tested by: *Carina*



# TEST REPORT

NO.: A002C1012131004S-2

Date: Dec. 16, 2010

Page 3 of 4

## Test Results:

Item	Unit	RoHS Limit	A
Lead (Pb)	mg/kg	1000	N.D.
Cadmium (Cd)	mg/kg	100	N.D.
Mercury (Hg)	mg/kg	1000	N.D.
Chromium (CrVI)	mg/kg	1000	N.D.

Flame Retardants	Unit	RoHS Limit	A
PBBs	mg/kg	1000	N.D.
MonoBB	mg/kg	/	N.D.
DiBB	mg/kg	/	N.D.
TriBB	mg/kg	/	N.D.
TetraBB	mg/kg	/	N.D.
PentaBB	mg/kg	/	N.D.
HexaBB	mg/kg	/	N.D.
HeptaBB	mg/kg	/	N.D.
OctaBB	mg/kg	/	N.D.
NonaBB	mg/kg	/	N.D.
DecaBB	mg/kg	/	N.D.
PBDEs	mg/kg	1000	N.D.
MonoBDE	mg/kg	/	N.D.
DiBDE	mg/kg	/	N.D.
TriBDE	mg/kg	/	N.D.
TetraBDE	mg/kg	/	N.D.
PentaBDE	mg/kg	/	N.D.
HexaBDE	mg/kg	/	N.D.
HeptaBDE	mg/kg	/	N.D.
OctaBDE	mg/kg	/	N.D.
NonaBDE	mg/kg	/	N.D.
DecaBDE	mg/kg	/	N.D.

## Specimen Description:

A: PET BACKING INDUSTRIAL DOUBLE SIDED ADHESIVE TAPES

# TEST REPORT

NO.: A002C1012131004S-2

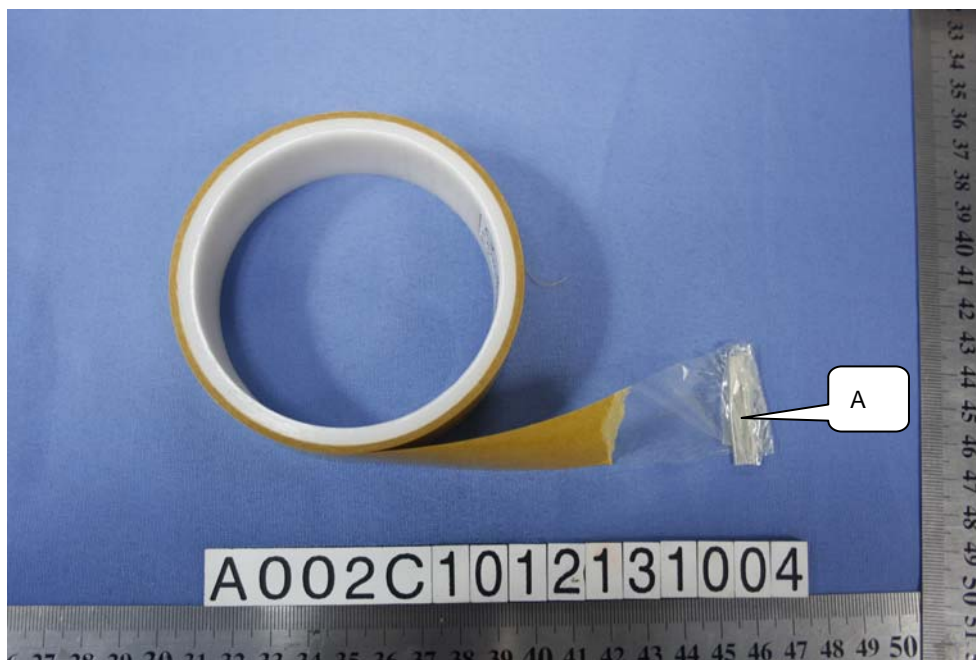
Date: Dec. 16, 2010

Page 4 of 4

**Note:**

- Specimens, which requested to determine Lead, Cadmium and Mercury Content, have been dissolved completely.
- mg/kg=ppm
- N.D.=not detected(<MQL)
- MQL=Method Quantitation Limit
- Photo is included

**Photograph of Sample**



PET BACKING INDUSTRIAL DOUBLE SIDED ADHESIVE TAPES

\*\*\*End of Report\*\*\*