

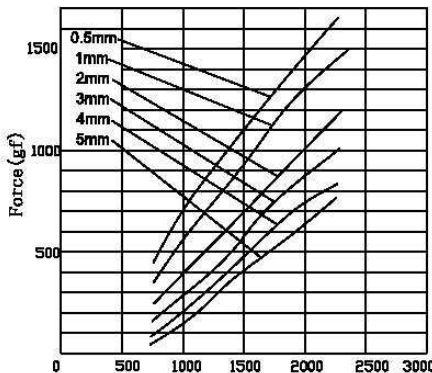


## DS01632L/S Tubular solenoids



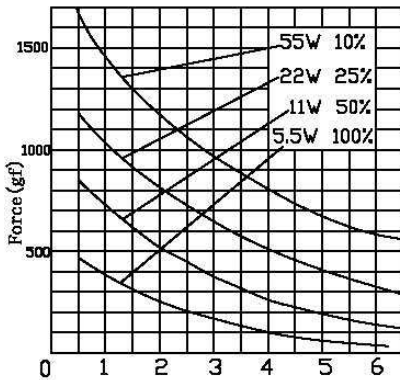
总重量 Total Weight: 42g  
应用范围: 用于自动化设备等

AMPERE-TURNS Vs FORCE  
安匝/吸引力



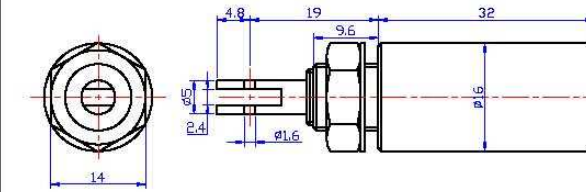
Ampere-turns (AT)

STROKE Vs FORCE  
行程/吸引力



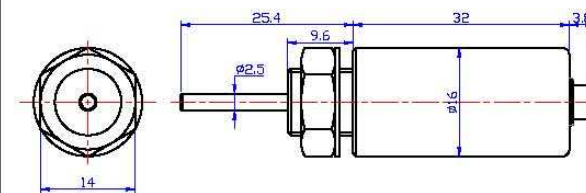
Stroke (mm)

类型: 拉式 TYPE: PULL



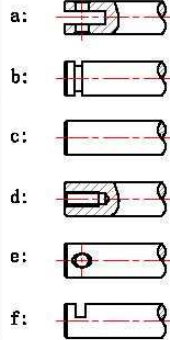
单位:mm Units:mm 通电状态 Shown Energized

类型: 推式 TYPE: PUSH

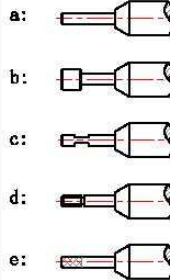


单位:mm Units:mm 通电状态 Shown Energized

滑杆外部与负载连接的典型结构  
plunger type:



顶杆外部与负载连接的典型结构  
push shaft type:



### COIL DATA线圈资料

Duty cycle (%) = $\frac{\text{"ON" time}}{\text{"ON" time} + \text{"OFF" time}} \times 100\%$ 工作周期 (%) = $\frac{\text{工作时间}}{\text{工作时间} + \text{断开时间}} \times 100\%$		连续 Continuous		间断 Intermittent		
		100%	50%	25%	10%	
MAX. "on" time in seconds 最大工作时间(秒)		$\infty$	230	25	6	
Watts at 20° 瓦特数(在20°)		5.5	11	22	55	
Ampere-turns at 20° 安匝值(在20°)		738	1058	1476	2338	
Type no.	Resistance (20°C) $\Omega \pm 10\%$	No. Turns	VoltS DC 电压			
型号	阻值 ( $\Omega$ ) $\pm 10\%$	线圈匝数				
DS01632L/S	6.5	800	6	8.5	12	19
	26.2	1600	12	17	24	38
	104.7	3200	24	34	48	76
	419	6200	48	68	96	152