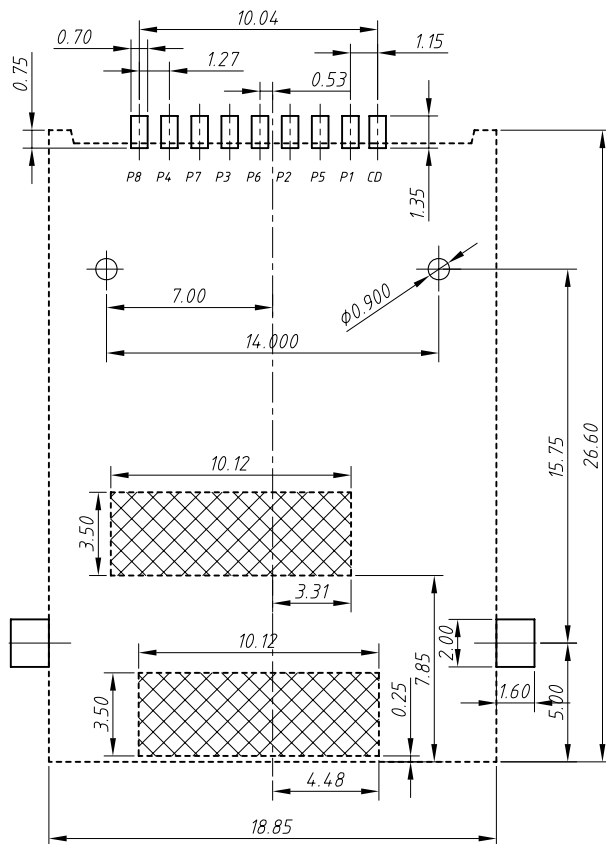


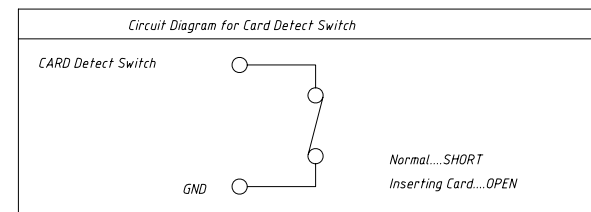
Specification

- × *Electrical Characteristics :*
- Current Rating:0.5A.*
- Withstanding Voltage:AC500V r.m.s.*
- Insulation Resistance:1000Megohms Minimum at DC 500V.*
- Contact Resistance:100Miliohms Maximum.*
- × *Mechanical Characteristics:*
- Mating Cyeles: 10000 Insertions.*
- × *Environmental :*
- Operating Temperature:-40°C to +85°C.*
- × *Material:*
- 1.Housing:HI-Temp plastic UL 94V-0 Rated.*
- 2.Contact:Copper Alloy.*
- 3.Shell:Copper Alloy.*
- Can accord with management standards for "environment-related substances to be controlled"*

UNLESS OTHERWISE SPECIFIED TOLERANCE TO BE		DRN: NEIL	DATE: 2008.05.07	A	新发行	NEIL	2008.05.07	
LINEAR	ANGULAR	CKD: DAVID	DATE: 2008.05.07	REV.	CHANGE DETAILS	BY	DATE	CHG/No
.X ± 0.38	X. ± 2'	APP'D: KING	DATE: 2008.05.07	TITLE:		RETC 深圳市锐泰科电子有限公司		
.XX ± 0.25	.X ± 1'	BREAK ALL SHARP EDGES AND REMOVE ALL BURRS	SCALE: 1:1	SIM-8PIN Push板上		TEL:86-755-27882199 FAX:27882798		
.XXX ± 0.10	.XX ± 0.5'	DO NOT SCALE	SCALE: 1:1	THIRD ANGLE PROJECTION		DRAWING NO.		SHEET
DIMENSIONS IN MILLIMETRES			PART NO.:	SIZE: A4		1/2		



Connector terminal NO.	Pin NO.
Pin 1	VCC:PWR signal and GND
Pin 2	RST:Reset signal
Pin 3	CLK:Clacking signal
Pin 4	Reserved
Pin 5	VCC:PWR signal and GND
Pin 6	VPP:Porgramming Voltage
Pin 7	I/O:Serial date input/output
Pin 8	Reserved



UNLESS OTHERWISE SPECIFIED TOLERANCE TO BE		DRN: NEIL	DATE: 2008.05.07	A	新发行	NEIL	2008.05.07	
LINEAR	ANGULAR	CKD: DAVID	DATE: 2008.05.07	REV.	CHANGE DETAILS	BY	DATE	CHG/No
.X ± 0.38	X ± 2'	APP'D: KING	DATE: 2008.05.07	TITLE:		RETC 深圳市锐泰科电子有限公司		
.XX ± 0.25	.X ± 1'	DO NOT SCALE	SCALE: 1:1	SIM-8PIN Push板上		TEL:86-755-27882199 FAX:27882798		
.XXX ± 0.10	.XX ± 0.5'	BREAK ALL SHARP EDGES AND REMOVE ALL BURRS		THIRD ANGLE PROJECTION		DRAWING NO.		SHEET
DIMENSIONS IN MILLIMETRES			PART NO.:		SIZE: A4			2/2